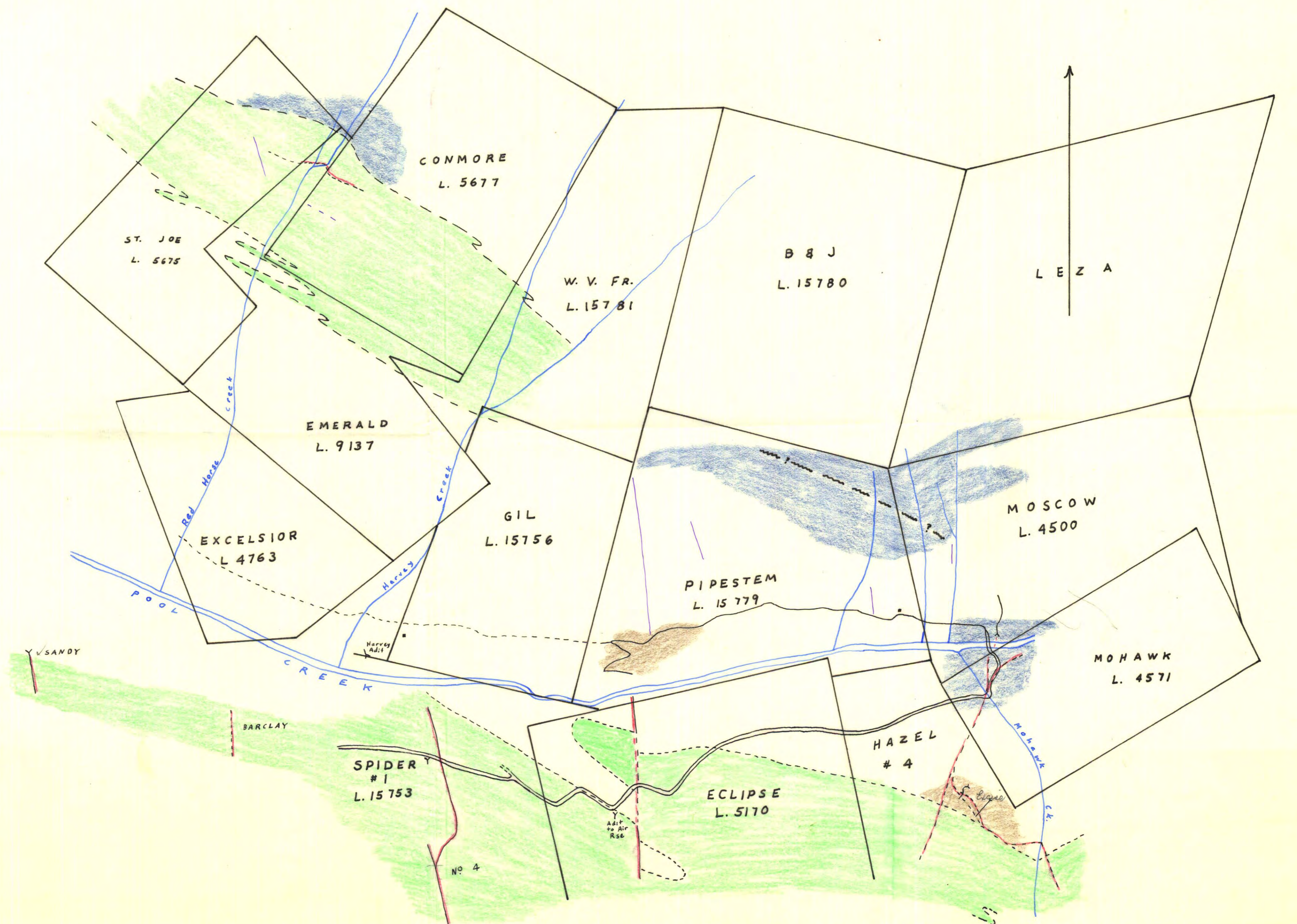
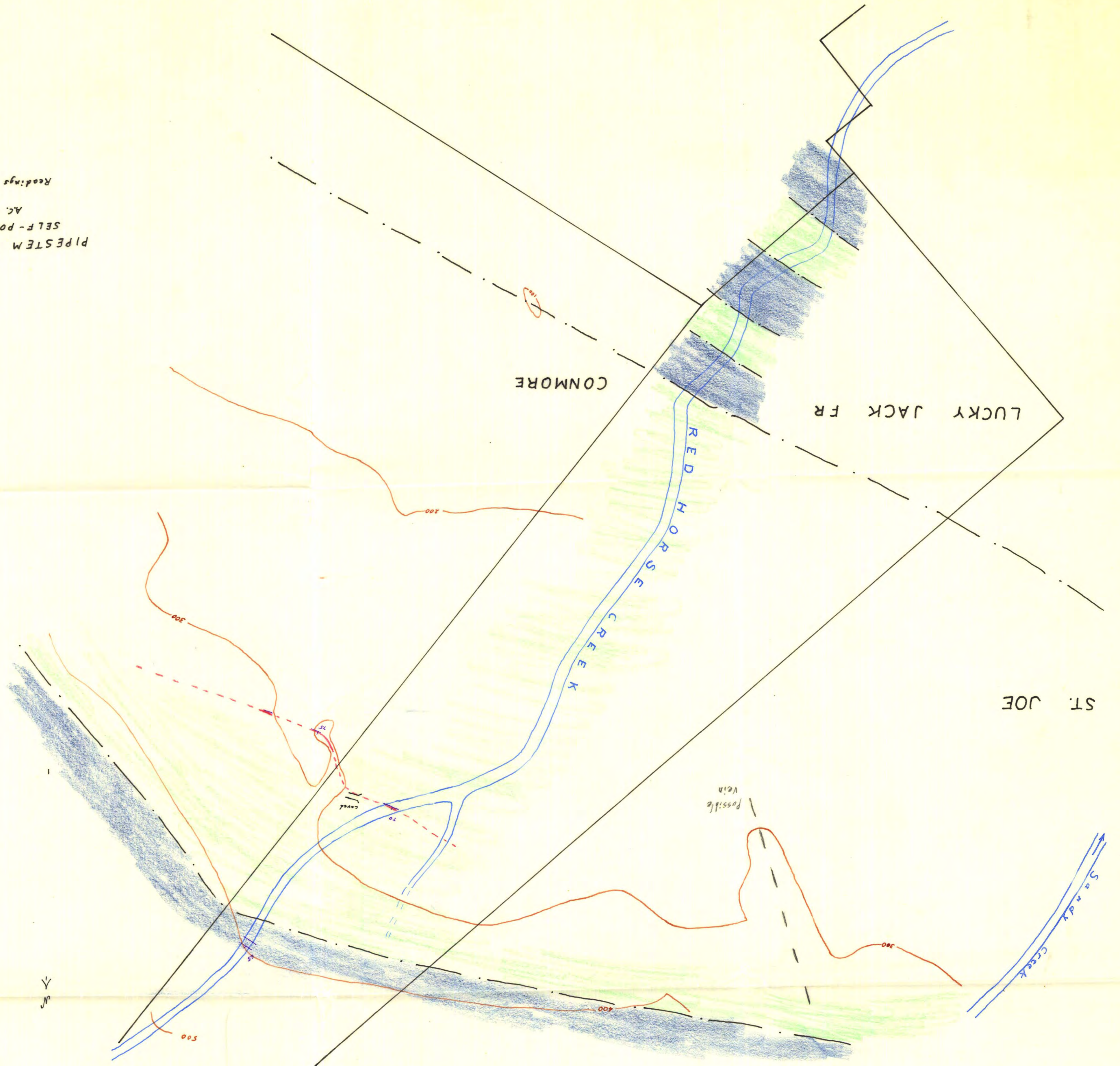


PIPESTEM GROUP - AREA 4
 SELF-POTENTIAL SURVEY
 A.C. SKERL 1957
 1" = 50'
 Readings in millivolts



92F 414

PIPESTEM GROUP
 AND ADJACENT CLAIMS
 A.C. SKERL 1957
 1" = 300'
 traced by G.E.P.E. 1962

- Volcanics
- Graphitic sediments
- siliceous
- Vein
- - - Self-potential anomaly

