

MONARCH & ELIZA M.C. (Formerly Rustend Mine)

Number of Units as of June 1985

Monarach	8 - 2 Post Units	(Held by L.J. Scott, Duncan, B.C.)
Eliza	6 - 2 Post Units	(Held by R. Neill, Langford, B.C.)

Location, approximately four miles north of Eliza Inlet entrance, Esperanza Inlet, Nootka District on the west coast of Vancouver Island.

---

This property was reported upon in the early 1940's, by a Mr. Stevenson, who was at that time, the Government of B.C. Geologist, who amongst other Vancouver Island locations, reported at length the Zeballos Gold Horizon and outer coast properties, associated with this. Mr. Stevenson was a renowned geologist, with eminent qualifications.

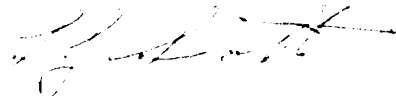
This early report is included in this portfolio. I have found everything described by Mr. Stephenson,, regarding structure, geology, workings and recommendations to be correct and still applicable, forty-five years later. The assay program that I ran in the lower drift in 1983, bears out and is even better than the one done by Mr. Stephenson in 1940. The access to the property can be made, as it could in the 1940's, by launch, hired at Zebellos 21 miles to the east, and Zebellos can now be reached by road from the Port Hardy Highway, turning west at the Woss Junction. Additionally the M.V. Uchuck has a weekly service from Gold River Wharf to the Frank Bebban Logging Co. Wharf, three miles from the mine site, at the inlet entrance. The Uchuck is a small freighter which is capable of transporting considerable freight tonnage, and about eight passengers.

The history of the mine is considerable development of two drifts, on a post mineralized faultfilling, with values up to 4.16 oz. gold to the ton, and an average shipping tenor of 1 oz. to the ton. The overall length, combined of these two drifts, which are at different elevations (13.29 meters) is, 165.2 meters and the only shipment was 14 tons of ore containing 14 oz. of gold and 3 oz. of silver.

As there was no mill or concentrator and there is no evidence of a crushing plant, one must assume that the ore was hand cobbled and that the bulk of the ore developed, remains on the two dumps, and the ballast of the rail tramway, on the floor of the lower drift. Additionally there is a distance of '15' meters between the face of the lower drift and the original portal of the upper drift, plus the elevation differential of the two drifts, which assuming the lower drift were driven to the face of the upper drift, it would give an overall distance of 42 meters approximately, and again the elevation differential of 13.29 meters of unmined vein material along the strike of the fault, notwithstanding the potential of sinking on the lower drift to an unknown depth on the vein. Also there must be considered the material, unmined above the two drifts to the surface. In all there is a considerable unmined potential of relatively high grade ore.

The question would come to the mind of a reader of this report, "if all this is the case why has this property not been mined out previously". The answer to this has to be the time of original development, the 1938 to 1940 period, the price of gold at the time, \$20.00 to the ounce, the imminent approach of war, and its effect on manpower and precious metal markets. The relative isolation,, expense and difficulty of transport at that time. These conditions of course have changed and in my opinion these properties and the existing works represent a viable mine.

I have been able to study the formations to the north and south of the workings and which are inclusive in the new units staked, and similar faulting and dykeing are evident in other places along with additional potential gold bearing veins.



L. J. Scott  
June, 1985

RUSTEND MINE (Port Eliza Gold Mine) restaked as **Monarch Mineral Claim**, 1983.

This property includes the Sunrise and Sundown groups of mineral claims, and the Sunrise Fraction staked in 1938 by Messrs. A. Rustend and S. Newton of Ceepeecee, and owned by the same men.

The property is on the west side of Port Eliza Inlet, about three miles from the mouth. Port Eliza Inlet is immediately north of Nootka Island, on the west coast of Vancouver Island.

In the vicinity of the workings the ground rises gently from the shore in low, rocky knolls with drift-covered areas between.

The property may be reached by steamers of the Canadian Pacific Coast Steamship Co. Ltd., running tri-monthly from Victoria up the west coast of Vancouver Island, and calling in at Zeballos, the nearest port of call. At Zeballos a launch may be hired, and the journey of 21 miles to the mine may be made in  $2\frac{1}{2}$  hours. The camp is on the beach, and the lowermost workings only a few feet above it. The water is deep to within a few feet of the shore, and landing with small boats is easily made. A log float connected with the beach could easily be constructed to handle landing from larger craft.

The rock formation is pink granodiorite cut by a few small diabase greenstone dykes.

A diabase dyke, about 50' wide, cuts the granodiorite in the lower adit. The dyke strikes westerly, and dips about 50 degrees northward. It is a dark-green, massive rock, with a fine-grained, diabasic texture. Other diabase dykes were seen along the shore.

The granodiorite is a massive rock with a medium, even grain. The rock in the upper adit and near the vein in the lower adit, is greyish-green in colour, but that in a cross-cut into the hanging-wall of the vein in the lower adit is pinkish by reason of the presence of pink feldspar.

The vein is a silicified fracture zone, which strikes north-westerly and dips from 55 to 65 degrees north-eastward. It is from 6" to 18" wide, and consists of angular fragments of leached wall-rock, cemented and veined by crystalline quartz and coarsely-cleaved calcite. The amount of sulphide in the vein is small, and consists of a few small grains of pyrite in the quartz; no lead zinc, or copper minerals were seen.

A strong, post-mineral fault follows the vein, and has caused considerable separating and crushing of the vein matter.

The property was staked in 1938 by the present owners. During 1939 Messrs. Lewis and Fowler had an option on the property, and during that time they had from 5 to 9 men working, driving the present two adits. Since 1929 the owners have done assessment work only. The only production from the property consists of 14 tons of ore containing 14 ozs. of gold and 3 ozs. of silver shipped to Tacoma in 1940, under the name of Port Eliza Gold Mine.

The only surface workings are some surface stripping on the vein, at scattered points over a distance of about 200', and some mining of the vein for 50' along its strike.

The underground workings consist of 2 drifts driven downward on the vein, one about 60' above the other with portals about 470' apart. The lower adit is 430' long and the upper one 112'. The only cross-cuts are in the hanging-wall of the vein, a cross-cut 12' long in the lower adit and one 25' long in the upper adit.

The upper adit started under the surface exposure of an ore-shoot, and followed it for 55' to where the one was sliced by faults. The vein-matter in this shoot consists of several diagonal stringers of quartz cut earlier silicified vein-matter 18" wide. A fault follows along the foot-wall of this vein-matter, but none follows the hanging. The north-westerly extension of the ore-shoot in the drift is terminated by the foot-wall fault which cuts the vein at a small angle.

From the end of the ore shoot, 55' from the portal, the drift follows faults and a 1" vein for 57' to the face. At this point a cross-cut was driven north-easterly for 27'. This working cut two small veins, 2" wide, striking north-westerly and dipping 55 degrees north-eastward. Both veins have considerable gauge on their walls. The rock in this adit is all granodiorite.

The lower adit follows the vein and accompanying foot-wall fault from portal to face for 436', with a cross-cut of 12' going north-easterly into the hanging-wall. Drag along the fault has made the vein-matter very discontinuous along this drift. Long sections consist only of broken pebbles and boulders of vein quartz in a gouge 6" to 1' thick. Nowhere in this drift does the vein-matter exceed 10", and where not completely broken by the fault the vein-matter averaged 3". No ore-

shoot comparable to that found for the first 55' in the upper adit, and the surface immediately above it, has been found in the lower adit.

The rock in the lower adit is mainly granodiorite but diabase greenstone is found along the foot-wall of the vein for 100' from the portal. It is terminated on the north-west by a fault contact with the granite, strike westerly and dip 50 degrees northward. Diabase is again found in the foot-wall between 340' from the portal, and the face. It is in contact with the granodiorite on the south-east along a fault, strike northerly and dip 70 degrees eastward.

Several samples were taken to get an idea where the values in gold might be expected, not to determine the average grade of the ore.

A description of these samples is given in the table.

COPY OF ORIGINAL (ORIGINAL AVAILABLE FOR REFERENCE)

Sample No.	Description and Location.	Gold oz/ton	Silver oz/ton
<u>Upper adit</u>			
641	Across 6" diagonal quartz stringer, 40' from portal	0.12	0.1
642	Across 3" diagonal quartz stringer, 50' from portal	0.11	0.1
643	Across main silicified zone 18" wide, 50' from portal	trace	trace
644	Across 2" of vein and gouge in cross-cut at face, 10' from drift.	4.16	0.9
645	Across 1" of vein and gouge in face of drift, 110' from portal.	0.08	0.1
<u>Surface.</u>			
646	Across silicified zone, 18" wide, 80' north-west of portal of upper adit.	0.73	0.1
647	Across silicified zone, 10" wide, 90' north-west of portal of upper adit.	0.37	0.1
<u>Lower adit.</u>			
648	Across 10" of vein-matter, 50' from portal.	0.02	trace
649	Across 20" of fault matter containing gouge, crushed rock and modules broken quartz, 100' from portal	0.1	0.1
650	Across gouge, crushed rock and modules, but 8" wide, and 320' from portal.	0.2	0.1

Signature of Mr. Stevenson attached to the original of this analysis.



DATE July 15, 1983

Province of British Columbia  
Ministry of Energy, Mines and Petroleum Resources

SAMPLE RECEIVED FROM LIONEL J. SCOTT

ADDRESS R. R. #4, Mt. Prevost Road, Duncan, B. C. V9L 3W8

LABORATORY NO.	SUBMITTER'S MARK	LABORATORY REPORT
✓ 5971	<u>13011</u>	<p><i>CHIP SAMPLE ACROSS 1 FT.</i></p> <p>Gold - 0.11 oz. per ton <i>MONARCH I</i>                      Silver - Trace <i>13 M FROM PORTAL</i>                      Platinum - Nil <i>LOWER ADIT</i></p> <p>Spectrographic Analysis: Arsenic - 0.15%</p>
✓ 5972	10849 M-1	<p>Gold - 0.03 oz. per ton                      Silver - Trace                      Platinum - Nil</p> <p>Spectrographic Analysis: Arsenic - 0.2%</p>
✓ 5973	<u>13012</u> #4	<p><i>CHIP SAMPLE 3 FT. ACROSS 45 METERS FROM PORTAL</i></p> <p>Gold - 0.29 oz. per ton <i>MONARCH I</i>                      Silver - Trace <i>LOWER ADIT</i>                      Platinum - Nil</p> <p>Spectrographic Analysis: Arsenic - 0.25%</p>
✓ 5974	13013 #5	<p>Gold - Trace                      Silver - Trace                      Platinum - Nil</p>
✓ 5975	13014 #6	<p>Gold - Trace                      Silver - Trace                      Platinum - Nil</p> <p>Spectrographic Analysis: Copper - 0.01%</p>
✓ 5976	13016 #7A	<p>Gold - Trace                      Silver - Trace                      Platinum - Nil</p>
✓ 5977	13015 #7B	<p>Gold - Trace                      Silver - Trace                      Platinum - Nil</p>

THIS DOCUMENT, OR ANY PART THEREOF, MAY NOT BE REPRODUCED FOR PROMOTIONAL OR ADVERTISING PURPOSES.

LEGEND

- T - TRACE
- M.C. - MAJOR CONSTITUENT
- N.D. - NOT DETECTED
- P. - PRESENT

*W. M. G. Anson*  
CHIEF ANALYST



DATE . . . . July 15, 1983 . . . . .

Province of British Columbia  
Ministry of Energy, Mines and Petroleum Resources

SAMPLE RECEIVED FROM . . . . . LIONEL J. SCOTT . . . . . Page 2 . . . . .

ADDRESS . . . . . R. R. #4, Mt. Prevost Road, Duncan, B. C. . . . .

LABORATORY NO.	SUBMITTER'S MARK	LABORATORY REPORT
✓ 5978	13017 #8	<p>CHIP SAMPLE ACROSS 3 1/2 FT. WIDE STOCKWORK 106 METERS FROM PORTAL</p> <p>Gold - 0.08 oz. per ton Silver - Trace Platinum - Nil</p> <p style="text-align: right;">LOWER ADIT</p> <p>Spectrographic Analysis: Arsenic - 0.35%</p>
✓ 5979	<u>13018</u> #9	<p>CHIP SAMPLE ACROSS 2 INCH WIDE VEIN</p> <p>Gold - 0.13 oz. per ton <b>MONARCH I</b> Silver - Trace Platinum - Nil</p> <p style="text-align: right;">END STATION 125 METERS FROM PORTAL LOWER ADIT</p> <p>Spectrographic Analysis: Arsenic - 0.75%</p>
✓ 5980	<u>10850</u> <u>10M</u>	<p>LAB SAMPLE FOOTWALL 10 METERS FROM PORTAL</p> <p>Gold - 0.11 oz. per ton <b>MONARCH I</b> Silver - Trace Platinum - Nil</p> <p>Spectrographic Analysis: Arsenic - 0.04%</p>
✓ 5981	87M Monarch #1 3' W Stockwork	<p>Gold - 0.04 oz. per ton Silver - Trace Platinum - Nil</p> <p>Spectrographic Analysis: Arsenic - 0.3%</p>

THIS DOCUMENT, OR ANY PART THEREOF, MAY NOT BE REPRODUCED FOR PROMOTIONAL OR ADVERTISING PURPOSES.

LEGEND

- T - TRACE
- M.C. - MAJOR CONSTITUENT
- N.D. - NOT DETECTED
- P - PRESENT

*W M Johnson*  
CHIEF ANALYST



**CERTIFICATE OF ASSAY**

Date: July 29, 1965

File: 8507-2252



**SGS SUPERVISION SERVICES INC.**

General Testing Laboratories Division

1001 East Pender Street,  
Vancouver, B.C., Canada. V6A 1W2  
Telephone: (604) 254-1647  
Telex: 04-507514

TO: MR. L. J. SCOTT  
R.R. #2  
Payne Road,  
Duncan, B.C.

We hereby certify that the following are the results of assays on: **Ore**

MARKED	GOLD	SILVER	XXX	XXX	XXX	XXX	XXX	XXX
	oz/st	oz/st						
14350	0.076	-						
3 SAMPLE 14354	1.164	-	3 FT. UPPER DRIFT MONARCH					
14355	1.022	-	3 INCH VEIN PITHEAD UPPER DRIFT ZONE GENERAL SAMPLE FAULT FILLING ALONG 50 METERS ABOVE UPPER DRIFT					

NOTE: REJECTS RETAINED ONE MONTH. PULPS RETAINED THREE MONTHS ON REQUEST PULPS AND AND REJECTS WILL BE STORE FOR A MAXIMUM OF ONE YEAR.

ALL REPORTS ARE THE CONFIDENTIAL PROPERTY OF CLIENTS. PUBLICATION OF STATEMENTS, CONCLUSION OR EXTRACTS FROM OR REGARDING OUR REPORTS IN NOT PERMITTED WITHOUT OUR WRITTEN APPROVAL ANY LIABILITY ATTACHED THERETO IS LIMITED TO THE FEE CHARGED.

L. Wong

PROVINCIAL ASSAYER

**Analytical and Consulting Chemists, Bulk Cargo Specialists, Surveyors, Inspectors, Samplers, Weighers**

MEMBER: American Society For Testing Materials • The American Oil Chemists Society • Canadian Testing association  
REFEREE AND OR OFFICIAL CHEMISTS FOR: National Institute of Oilseed Products • The American Oil Chemists' Society  
OFFICIAL WEIGHMASTERS FOR: Vancouver Board Of Trade

**CERTIFICATE OF ASSAY**

Date: June 25, 1985  
File: 8506-2051



**SGS SUPERVISION SERVICES INC.**  
General Testing Laboratories Division

1001 East Pender Street,  
Vancouver, B.C., Canada V6A 1W2  
Telephone: (604) 254-1647  
Telex: 04-507514

TO: MR. L. J. SCOTT  
R.R. #2  
Payne Road  
Duncan, B.C. V9L 1N9

We hereby certify that the following are the results of assays on: **Ore**

MARKED	GOLD	<del>XXX</del>	XXX	XXX	XXX	XXX	XXX	XXX
	oz/st	<del>oz/st</del>						
12	0.002		MONARCH M.C. SCOTT VEIN WALL ROCK (C4ERT)					
14	0.090		MONARCH M.C. SCOTT VEIN CHANNEL ACROSS 10' X 11"					
15	0.196		MONARCH M.C. GRAB FROM UPPER DUMP					
16	0.040		MONARCH M.C. GRAB FROM LOWER DUMP					

NOTE: REJECTS RETAINED ONE MONTH. PULPS RETAINED THREE MONTHS ON REQUEST PULPS AND AND REJECTS WILL BE STORE FOR A MAXIMUM OF ONE YEAR

ALL REPORTS ARE THE CONFIDENTIAL PROPERTY OF CLIENTS. PUBLICATION OF STATEMENTS CONCLUSION OR EXTRACTS FROM OR REGARDING OUR REPORTS IN NOT PERMITTED WITHOUT OUR WRITTEN APPROVAL. ANY LIABILITY ATTACHED THERETO IS LIMITED TO THE FEE CHARGED

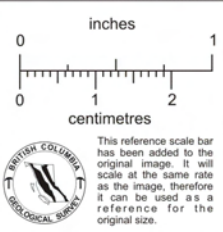
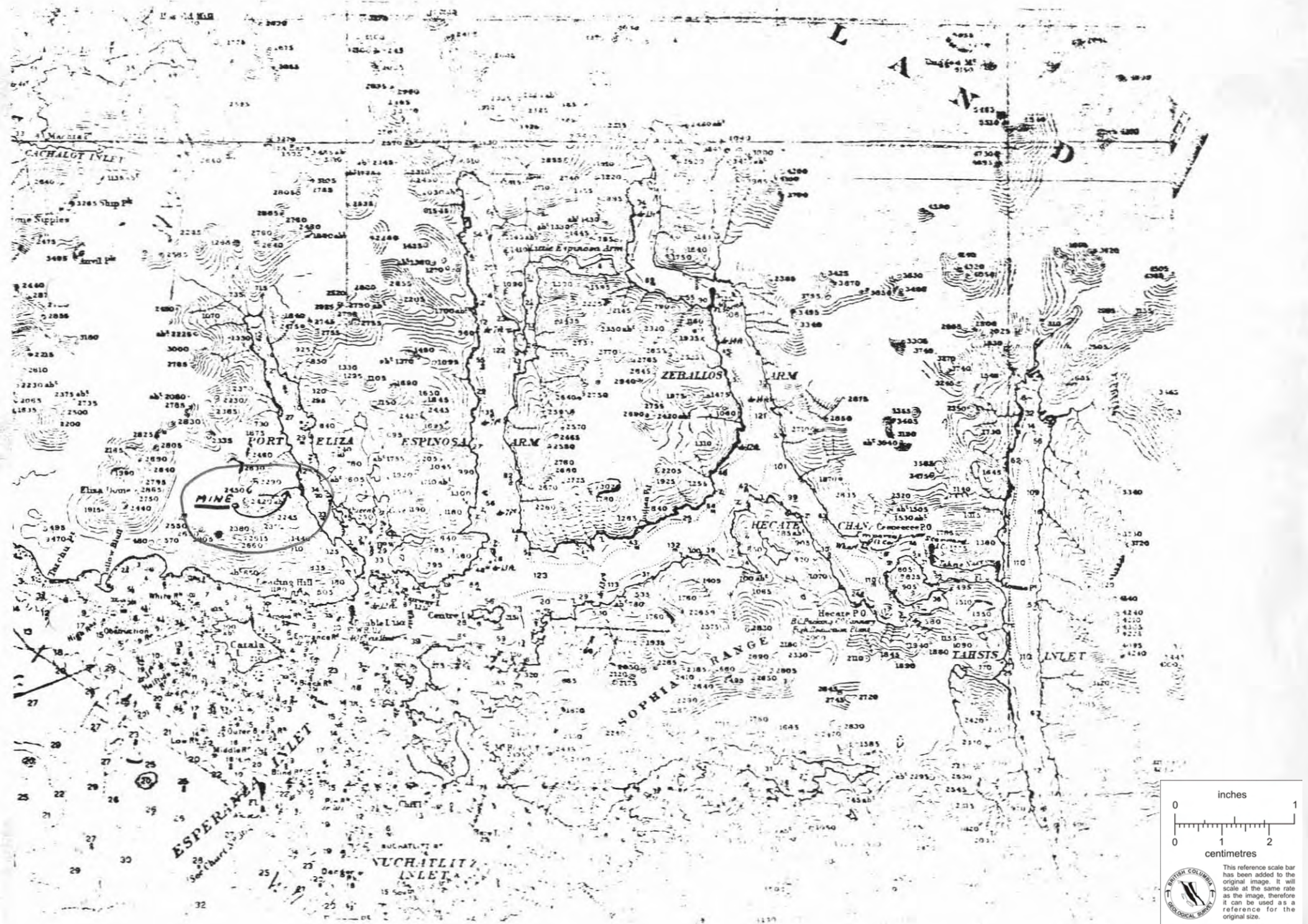
L. Wong

PROVINCIAL ASSAYER

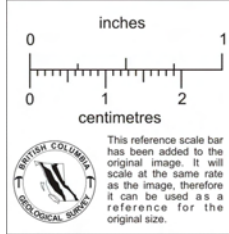
*Analytical and Consulting Chemists, Bulk Cargo Specialists, Surveyors, Inspectors, Samplers, Weighers*

MEMBER: American Society For Testing Materials • The American Oil Chemists Society • Canadian Testing Association  
REFEREE AND OR OFFICIAL CHEMISTS FOR: National Institute of Oilseed Products • The American Oil Chemists' Society  
OFFICIAL WEIGHMASTERS FOR: Vancouver Board Of Trade

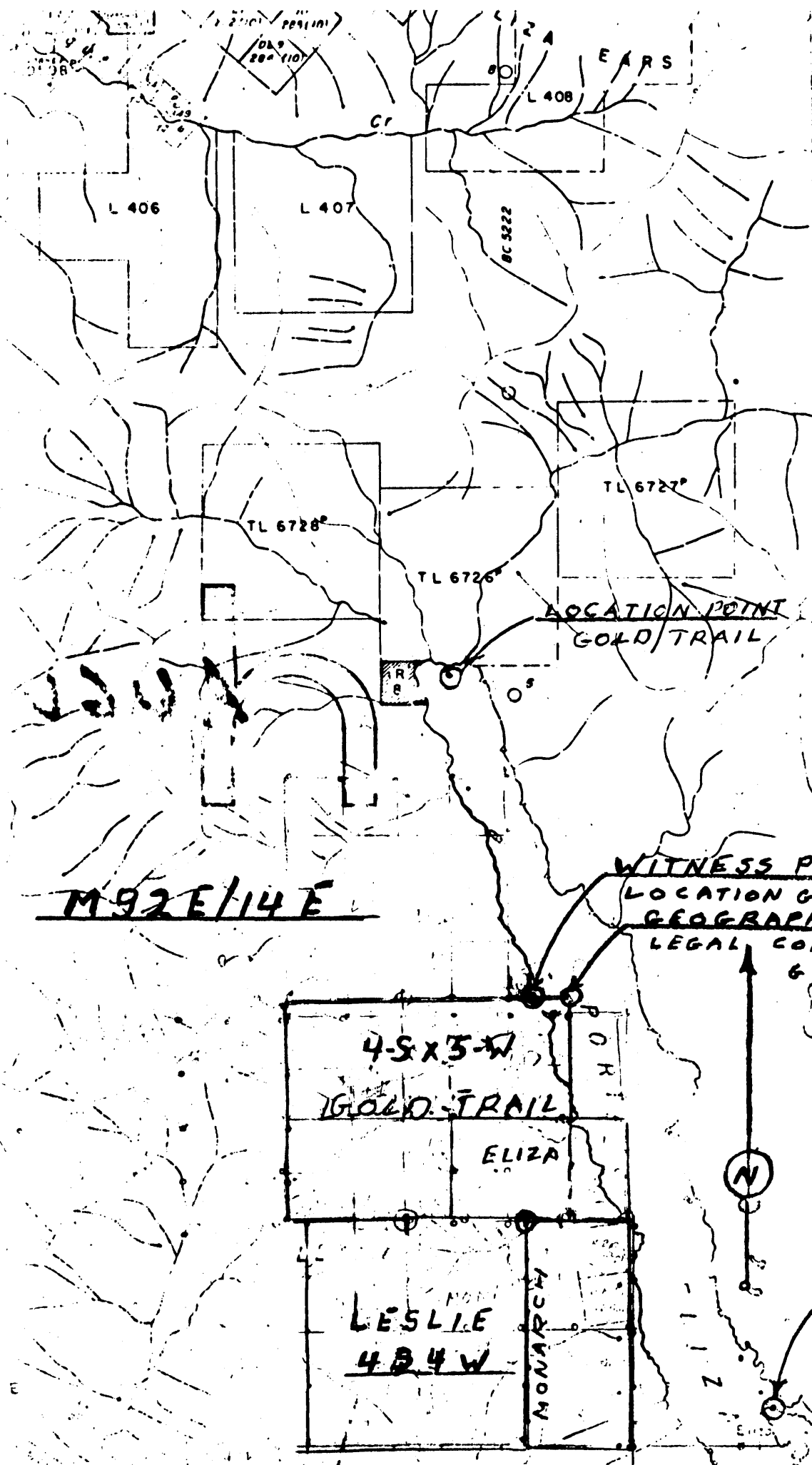








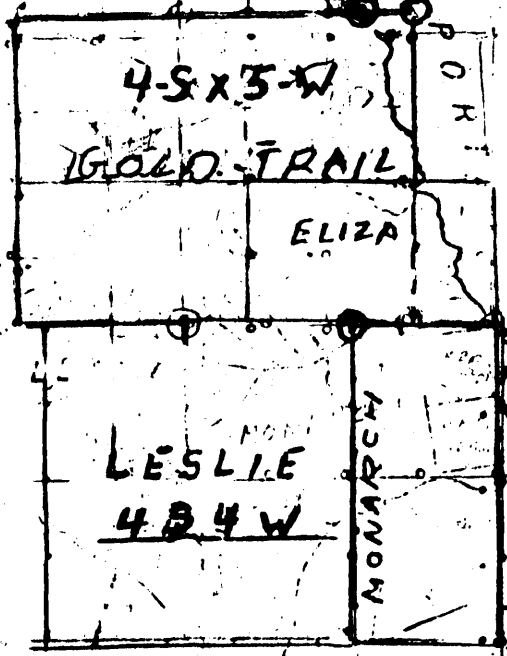
24



M 92 E / 14 E

LOCATION POINT GOLD TRAIL

WITNESS POST (L.C.P.)  
LOCATION GOLD TRAIL  
GEOGRAPHIC LOCATION  
LEGAL CORNER POST  
GOLD TRAIL M.C.



LOCATION POINT LESLIE M.C.

MS 326





ESPERANZA INLET

PORT ELIZA INLET

MINE

PORT ELIZA

ESPINOSA ARM

ZEBALLOS

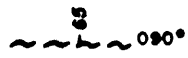








LEGEND



TRACE OF SHEAR



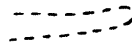
VEIN



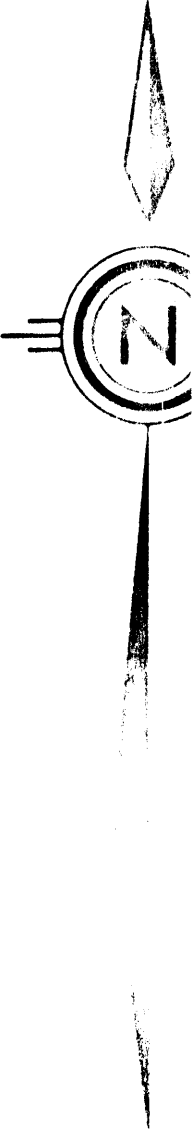
UPPER ZONE SURVEY STATIONS



SURFACE SURVEY STATIONS



LOWER ADIT



SCALE

