

Renew - Hemmingsen index, 19

006135

July

- 5 Victoria → Pt. Renfrew
- 6 Saw Wayne Coombs, combed BC zone for shings, & cruised for 1/2 W of gulch pit
- 7 Port Renfrew → Victoria for more equipment.
- 8 Victoria → Port Renfrew. Mapped rd & 1/2 W fr saddle gulch pit
- 9 Planotabled Reko #8 zone.
- 10 Cruised Hemmingsen M.L. to Br. 5000, & parts of H 2100 & other branches
- 11 Mapped most of Granite 3400 by pace.
- 12 " Granite 8000 by poly chain.
- 13 " " M.L. fr ls. stub rd to saddle ch pit, mostly by poly chain
- 14 " betw. lower & upper sec'ns of Granite 8000, by resection & estimation  
Port Renfrew → Victoria
- 15 Got vehicle serviced, saw ASB, & wrote Bruce Spencer. Victoria → Port Renfrew  
Wrote Hon. Geo. Kenster re TRIM, DONNER, & HEBER.
- 16 Polychained 900' up Renfrew Ch. fr. elbow opp. Granite 8000. Left lights on,  
& battery went dead. Walked abt. 6 1/2 mi. bf. got ride back to cabin.
- 17 Day lost to field work, but got battery 2/3 charged & vehicle running.
- 18 Polychained N end Granite 3500
- 19 Saw Coombs, then polychained G 3000 across most of S ls. belt.
- 20 Rain. Plotting.
- 21 Rain. Traced SW ct. of N ls. belt fr G 4200 to G 3500. Tran. fr N end of 3500  
to NE summit then down to N end of G 8000.
- 22 Sprinkles. Paced rest of S ls. belt down G 3000, then polychained N end of 3000, &  
attempted to trace SW ct. of N belt up to 2500.
- 23 Traced N ct. of zones 9-11 ls. fr Granite M.L. across rj. & for 1,000' on Hem. slope.
- 24 Mapped S end of G 3510 & attempted to find out what happens to ls.
- 25 " ls. below G 6000 & looked at the 2 sec'ns of S belt ls. on Renfrew Ch.
- 26 Traced NE ct. of 9-11 ls. down to fault at G. Ch. tran. on strike of fault to nose  
of inter-fork rj., then over low summit to end of G.M.L. at ch, then up final branch.
- 27 Climbed to rj. above zone #9, tran. crest over 2nd low summit, crossing ls. &  
"g. monz.", then traced ct. down Renfrew slope to base of 1/2.
- 28 With difficulty f. ls. N ct. E of saddle pit & traced back twd fault. Remapped  
G.M.L. past pit to ch on ls. N ct. by Eranton & poly chain.
- 29 Polychained S end of G 3400, pacing on to jc. with H 2100.

PROPERTY FILE

Renfrew-Hemmingsen Index 1977

00132

- June 28 Mapped G 3400 to H 2100, & H 2100 rd 1st sw-back, by Brunton-polychain.
- 29 " S 2400' of G 3000 fr G 3400; jc & made tie to 3400.
- 30 started planotabling by closing gap betw. yy's mapping on G 3000 & last year's.
- July 1 P/e saddle grl pit & vicinity cut very short by rain. Plotted June 28-29.
- 2 Fin mapping along G 6000 & std. up G 6200, by polychain.
- 6 Re-shot p/t of June 30 & ctued down draw from saddle twd G 3400. Drew up revised legend to 200-foot compilations.
- 7 P/e on down to G 3400 & std. N. Plotted rest of June 28.
- 8 P/e upper loops of H 2100.
- 12 Polychained G 3500 for 900' N fr G 3510. Ctued p/t N on G 3400.
- 13 " " " another 900' N. P/e area of ls. slide above "
- 14 P/e  $\Delta$  10-12-13-14-15 betw. G 3400 & G 3000.
- 15 P/e up G 3000 fr  $\Delta$  1 to complete the loop at  $\Delta$  15.
- 16 Heavy rain. Compiled 200' map fr. jc. G 3000/3400 to jc. G 3000/3500, fr. p/e & Brunton-polychain.
- 17 Tied in zone 4 to elbow of G 6200 by Brunton-tape.
- 18 (Wells still away). Cruised for 1/2 hr  $\Delta$  14 & on "Fallers' lens".
- 19 Fin. p/e NE ct. of main S ls. up to G 3000, tying in more firmly to Brunton-polychain. Std. p/e "Fallers' ls." fr G 3000.
- 20 P/e most of "Fallers' ls" down to timber & up to pinchout.
- 21 Fin p/e " " & set 2 stas. for mapping bulge ls.
- 22 P/e bulge ls.
- 26 Polychained a 3rd 900' of G 3500, then drove around to saddle pit & resumed p/e there.
- 27 Polychained 600' of G 3500, then ctued p/e saddle pit area.
- 28 Fin. polychaining G 3500, then traced S ct. of N belt ls. across Renfrew Ch.
- 29 " " G 3510, then fin. p/e saddle pit area.
- 30 P/e S ct. of N belt ls fr top of E slope down draw to W.
- 31 checked zone 8 quarry & F perch nr upper brj, while Wells cruised for S belt ls. below G.M.L.

PROPERTY FILE

1976  
July

6 Threatening, with shower lunch hr. Saw Wayne Coombs, then drove to No. 8 zone to ~~over~~ locate C shrgs, look over A & B, then on to saddle gvl pit.

Alt. rdg. 1570' at proposed p/t A1 on E r. of N pit 8 zone, at 3:20 PM.

" " +80' " est. 10' est nr. long brj. at 5:50 PM, so 70' high.

So el. of A1 is 1500'.

W of saddle gvl pit, G. M.L. runs SW, then NW. ls comes in along the NW sec'n. & 11's it, with only a slice along the NE side, in ct. with more or less skarned andes & dia. Where the ls. is intruded by andesite it has dev'd a shell of white & bluish wollastonite, sp. 60. Betw. this slice & the gvl. pit, & betw. the road & the limit of logging at the height of land, all of the sporadic %s are of intrus. &, the intrus. phase being mostly mafic.

July 8 AM. rdg. 55' at cabin 1:50 PM., 1750' at saddle gvl. pit at 2:30 PM.

corner fai ls intruded by andes dikes east fr spy. D in ls 350' @ 10'


Mapped Granite M.L. fr saddle gvl. pit to end at N Rensfrew Ch by pace & compass, then caught %s on way back.

1976  
July  
9

P/c Reho #8 zone.

Do peg test, then vainly hunt for Roscoe's P.L.

A1 set on S end of E rj.

- A1 ① NE cr of mag shng, ext 25' grid W & 15' grid S. 5' to inst across sk. andes to 8' l-d dyke + lofs.  
 ② NE cr of 4' l-d dyke in andes, which is in part skarned along cts. 25' short of edge % at 10' fr NW cr.  
 ③ SE end of mag & sk shng, 4' wide, ext. 17' at 000° when rdg to inst. 110° cov'd at both ends. Centre of a 4x4' shng is 10'  $\perp$  NE fr NW end.  
 ④ - centre of % 10' across on l of S, ext. 6' rt & 12' left: met ends tsk, with some l-d on S.  
 ⑤ - tape & compass sta. 2 of '75 surv.  
 ⑥ - sedge of rd, 10' left of opp. short of rd cut %.  
 ⑦ - N " " " on curve.  
 ⑧ - SE cr. of %, on l-d dyke, 7' past NE cr.  
 ⑨ - on stump abt 10' S of line MN. Abt 10' left a little mag & sk was blatted out. 40' farther to SW cr. of % at cleaned-off intrus. V.  
 ⑩ - outer edge of rd.  
 ⑪ - rd jc, 23' fr quarry rubble.  
 ⑫ - S tip of % in quarry wall.  
 ⑬ - mag in N quarry wall: 
  
 ⑭ - ditch, at N end of quarry.  
 ⑮ - N end of 20' of skarn & mag exp. in rd. cut. 15' past E edge of rd.  
 ⑯ - toe of large % of andes & flg dia.  
 ⑰ - on same % at 2 - 2" seams of mag. in andes. 10' fr SW edge of %.  
 ⑱ - survey stick pass. almost in place, with flagging: 11. N, 4E + 50.  
 ⑲ - SW cr. of another %, abt 30' x 30': mostly flg dia cut by irreg l-d dykes.  
 ⑳ - Small % of skarn, mag, & py. 25-30' out lofs to trench on mag & skarn.  
 ㉑ - Abt 10' trench on rubbly mag.  
 ㉒ - 8' trench on mag rubble.  
 ㉓ - in ditch, 5' fr rd & 4' fr 10' of sulc underlying till in rd cut.  
 ㉔ - small % of massv. py, sp. 62  
 ㉕ - betw bloc of ls. & skarned andes; rubble of skarn & mag exts 25' left.  
 ㉖ - prob. % of meta-andes cut by irreg l-d dykes; exts 18 on lofs, 10' wide.  
 ㉗ - skarn & mag rubble, 15'  $\phi$ .  
 sta % - meta-andes, cut by many narr. l-d dykes.  
 ㉘ - small exp. of rubbly mag.  
 ㉙ - poss. o/c of skarn & mag, 8' wide on lofs & ext. 10' rt & 9' left

030 SW cr of pass. % of meta-andes; exts 20' rt; veined with ep & G.

031 S end of ls body, abt 20' wide, 12' past skarned andes, 18' across on lofs.

032 On stump, 13' past exps. of ls cty. diss. snts.

033 SW cr of block of l-d 12' wide & abt 20' long on lofs.

034 pass. % of l-d ext. 15' out on lofs.

1976

July

10

Cruise Hemmingsen M.L., 3 sev. branches.

% fb meta-andes, no dio

fc andes.

fd meta-andes cty patches of m-c/g mafic dio.

fe cty bath andes. on S & E on N. Appar. D. in ls  $050^{\circ} 45' SE$  Actually ls is only abt 50' wide, flanked on N by l-d, which ctus abt 300' to end at %.

At H 2000 take tx-192. sporadic dio % to here. Odometer 69.0

ff mafic dio. Also in wall of gul. pit.

fg quarry + gul pit: meso to meta-dio, cut by l-d dykelets. Also bears o/c in ck 70.3<sup>mi</sup> at jc.

fh ditch % of m-c/g mafic dio. Drive to Br. 5000 &amp; turn back.

fi small quarry in mixed meta-andes &amp; mafic dio. Br. 4000 clearly going wrong way.

fj ditch % of l-d &amp; meta-andes.

Hemmingsen brj on Br. 2000: tx-314 upstrm fr brj. l-d exp. at rim of canyon below brj on W side, &amp; this seems to be main rock as far as a s.z. along E side of canyon; dk rock to E may be andes. Odometer 74.7

fk quarry exp. leuco to meso dio cty a few nens of meta-andes. Locally ctus some finely dissipy & apyn 7nd N end an andes dyke or nens is a locus of shearing,  $300^{\circ} 65' SW$ . Fr ditch sp. 63 of very leuco dio & 64 of hard rib in s.z. N of s.z. the rock is sil. & seams with py. A sheared-up andes nens has inclusions of o/g grey rock. At N end a strong shear & fract zone lies  $305^{\circ} 75' SW$ . 5.15 mi at end exp. 5.6 mi at jc. with H 2110

Big ck at G. 7, soon fall'd by end of rd. 2110. No % along 2110

7.3<sup>E</sup> at 2100 jc. 7.6 at big rd cut: m/g meso-dio, sheared sub-ll

fl with hill slope. A few andes. nens. % 400' long.

7.95 mi where turn around at stub rd.

1976

July

11

Map most of Granite Br. 3400

K photos 1-3 fr j.c. of H 2000 with H.M.L. 4 fr pkg. spot on G 3400.  
Blocked by slide here, so pace N:-

0-120 Rubbly cuts in f-m/g meta-dio

230-500 ls.

820-1130 Mostly leuco-dio, with veins of meta-andesite & ulm rock, sp. 65. Strongly  
slipped // road.

2640 Small ch in large draw.

3750 " " in shallow "

5060 " " "very" "

5160 Start ls.

5570 end of rd, opp. bend-away of rd below. %cs of alt. andesite betw end of  
rd & ch gully

5550 5' of alt. andes at N end of ls. rd cut %cs. It is coarsely xine &  
massv; cut by sev ep. andes dykes. Dyke at 5170-80 & tns consid. diss. py.  
End ls. at 5160.

5140-5100 Andes, ep. nr. ls, then strongly slipped, then fresh.

5050-4970 sheared, slaty-looking andes; sp. 66 of more compact lens.

4870-4850 Dk. andes cut by dykes of leuco-dio &amp; alaskite.

4850-4500 q.d. phase of leuco-dio, sheared // rd. sul-bearing in part, so thru-rusty.  
50' break in exp. abt 4600.

4500-4470 meta-dio.

4470-4370 mostly meta-dio, with l-d &amp; meso-dio phases, &amp; andes. veins, esp at 4370.

4330-3900 meso-dio, more or less mylonitized. 35' gap. Gent'y m/g S of 4150. Some meta-  
dio patches & andes veins.

(adjust 4500 - 4150 by reducing diffs. 10%)

3900-3850 Leuco-dio or q.d.

3810-3650 f-m/g meta-dio. sp. 67 fr bs. ch dykes of meso &amp; leuco-dio at 3695.

3350-2930 " " " " , grading in places to meta-andes.

2930-2820 meso-dio, with some meta-dio.

2530-2510 Meta-andes grading to meso-dio.

2420-2350 Meta-andes, ctns a block of almost bluish-gray meta-dio.

2350-2225 Meso-dio. Cut by a few l-d dykes, &amp; ctns andes veins.

2225-1830 Meta-dio

1780-1760 Leuco-dio.

1660-1560 Meta-andes, skarned at start &amp; dyked by l-d.

1560-1490 Leuco-dio

1490-1380 Meta-dio with meta-andes phases. Small l-d dykes.

Sp. 68 of l-d fr 1100'. Alt of 1790' at pkg spot at 5:15 PM. 9 + 15' at cabin 6:30

1976

July

12 Pelychain mapping along roads on 1" = 200' map.  
Granite Br. 8000:

Lower sec'n At 213'  $\Gamma$  in ls. is  $325^{\circ} 35' SW$ .  
S.Z. in andes at 284' strikes  $030^{\circ}$ .  
Ls above, 25' - 20' back,  $290^{\circ} - 305^{\circ}$ .  
Andes under hump, abt 50' back, app. 195'.  
S.Z. in andes at 341' lies  $355^{\circ} 40' E$ .  
Ls. % starts app 585', 40-60' W of rd.  
 $\Gamma$  in ls at 623 is just abt flat.

Upper sec'n Note 1: melo-dio (dd) cty. abundant andes veins & alt. to skarn in patches. 2 small ls. veins N of the large one, all 3 enclosed in garnetite. Melo-dio locally ctns v. cly segms. Along ctns with andes, both rocks are dyked by leuco-dio.

Note 2: f/g lgt grn rock, sp 69, of uncertain affiliation.

Note 3: intrus.  $\nabla$  of andes & melo-dio in leuco-dio; local larger bodies of melo-dio sp. 70 of v. cly leuco-dio at 679'.

Narr. S.Z. at 721' lies  $060^{\circ} 60' SE$ .

Note 4: coarse intrus.  $\nabla$ ; large ~~thin~~ & small veins of andes & melo-dio in 1-d; 1-d  $> 50\%$  of rock.

Note 5: 45' more of coarse intrus.  $\nabla$  not shown as 900' by topo leveled on curve.

Note 6: leuco-dio, andes, & an enigmatic rock, sp. 71.

Measure 1590' to end of rd, taking ls curve as 1140', whereas map ends it at 1750'.

July 13 200-scale mapping up Granite M.L.

Intermittent % along GML to spur rd to foot of Br. 8000, all ls.

Note 7: f-m/g leuco-dio. cty. at least 1 ven. of ls. No andes.

" 8: mixture of melo-dio, leuco-dio dykes, & "alashite", sp 72 on N side.

" 9: 51' at  $-20^{\circ}$  to base of %, also  $236^{\circ}$ .

T-line:  $331^{\circ}$ , for 50' S to tip of % & 115' N to sim. tip.

Note 10: mostly leuco-dio. with some andes & melo-dio; much sliced & obscured.

Rd. bend at 1063'.

Note 11: dense to porph rock, mostly lgt grn but with a brownish phase, sp. 73. Mod. to heavily pyritized.

Note 12: a dyke somewhat like note 11 exts at least 50' at  $190^{\circ}$ . Leuco-dio down on it.



1976  
July  
14

- % of Intrus  $\nabla$  along base, of small veins & large block of andes in leuco-dio. Cave runs back over 0' horiz & has ls remnants, so evidently, was formed by cald. of a large ls vein. Upper part is massv. leuco-dio with <sup>minor meso-dio</sup> xenoliths.
- Fr pt. on S ct. of leuco-dio abt 100' horiz. fr upper rd shoot  $313^\circ$  to last bend in GMA bf grl pit,  $274^\circ$  to head of ck or truck, &  $233^\circ$  to ck at end of stab rd. Intrus.  $\nabla$  ctus. S abt 100' more, then gives way to lava. melo-dio etc. andesites & strom.
  - A ct., with ls on S, F porph. on N, runs  $085^\circ$  for abt 75' fr lower Br. 8000. E of this is a flat for 30', then bluffs of mainly melo-dio.
  - Melo-dio comes out to lower 8000 at  $320-380'$ , F porph  $435-450'$ .

- July 16 Alt. rdg. -90' at approx. m.s.l. & -80' outside cabin at 10.15 AM.  
 " " 1540' at foot of Br 8000 at 11.30 AM.  
 " " 1485' at 11.40 AM at elbow of ck opp. foot of Br. 8,000.
- Polychain up the ch. fr this elbow. A blazed & red-flegged line crosses ck at a small  $\angle$ . Mag. X-line at 113'.
- 350-425' - ls % along W side.
  - 490-550' - ls % 30' W of ck, foll'd by 10' of melo-dio
  - 580-640' - ls. % abt 50' E of ck - small exps around a rj. nose.
  - 706' - ls % on W side of ck.
  - 732' - ct. betw. ls & andes in % 20' W of ck; felsite porph. dyke in ct. Rock is mostly porph, sp. 74, not andes. Pass. ch; back to ls at end of % at 750'.
  - 744-760' - ls in ck bed.
  - 790' - ls on W side of ck.
  - 800-860' - felsite % 20' W of ck.; mixt. of aplite, qd, melo-dio, & felsite. En echelon past 900' nearer ck., mostly felsite.
  - 900' - small % of felsite on E side.
  - 872-819' - ls % along E side, overlain to S by feldspar porph., sp. 75. Sct. of porph. dyke at 790' Foll'd by 5' of ls, then heavily pyritized felsite.
  - 773-759' - ls to end of %.
  - 760-743' - ls. % in ck bed.
  - 694' - small % 60' E of ck is of crowded F porph, upper cut by a c' dyke of flg meso-dio & intrus  $\nabla$ . In 30' of intermittent % Nck. the F porph appears to grade to felsite.
  - 825' - 75' E of ck to tip of % of crowded F porph 5' exp. with ls on NW.

5/16  
Pit



N end Granite 3500

1976

July  
18

Alt. rdg - 80' at cabin 10:50 AM. 20,065.8 mi.

Mi: 73.4 at start G 3000.

" 76.4 - Hem hookup rd 1/2 G 3000

" 79.0 at end of G 3500. Alt. rdg. 2265' at noon.

Small % of meladiao at very end of G 3500 rd bed.

Abt 5' of meladiao at end of W arm of cross, then 25' of ls. in rd bed.

Ls. % in timber abt 40' N of end of NE arm of cross. Polychain this  
NE arm:

34-87 leuco-dio on W side, much slipped

87-131 feldspathized andes, also " " Gradas skarn, sheared, along ls ct. Ct. is  
irreg., but in 16' of rock face avgs  $330^\circ$  with steep W dip. Some  $\pi$  along ct.

131-171 ls. on W side.

258-286 meladiao on W side.

405-420 cross 3500 stub. Mela-diao % on W side of stub 90-140' fr this crossing.

500-520, ctuing down W arm; mela-diao % 30' N of W arm on N side of pass sink hole.

At 371' swing down 3500:

395-472 Mela-diao, cut by a few irreg. dykes of leuco-dio. on E side of rd.

472-75 Flinty flg rock, sp. 76. Mela-diao % 50' E. " " " " "

517-88 ls on E side of rd, stg. 15' back. Small % of mela-diao 60' back fr 547'.

588-98 andes " " " "

595-98 ls " " " "

598-670 mela-diao " " " " with a skarned andes non, the mela-diao fresh.

670-86 ls " " " " Gt. with mela-diao trends  $060^\circ$  for 20'.740-68 ls " " " Edge of % runs back at  $040^\circ$ ; ls is likely ctuous under gap.

768-80 andes

780-805 ls

805-11 felsite porph. dyke

811-35 ls with irreg felsite porph. &amp; andes intrus.

835-43 felsite cut by 3' gouge zone, strkg abt  $025^\circ$ .

843-66 ls &amp; andes non in felsite.

846-75 andes with ls non.

875-94 mela-diao.

894-926 ls. Fall'd by bulldozer track 150' E; all ls on N.

987-1058 - ls

1058-69 - rubblely felsite.

1097-1190 - ls. Fall'd by mtd draw across rj.

1180-90 - ls % on W.

1274-1300 - rubblely ls.

1319 27 - ls.

1327-38 - melandia cty a little cpy.

1338-1833 - ls. Cut by numerous andes dykes 1360-1415. Ls on W 1460-1575  
Centre of sharp curve <sup>10ft</sup> at 1590. Edge of timber where tree fallen  
across rd at 1775. Small andes dyke at 1808.

1923 Centre of curve to rt

1923-97 Ls. Pass  $\Gamma$  at 1980 is  $285^{\circ}12S$ .

2072-97 Ls.

2097-2126 Leucodio capped by ls.

2170 Centre of marked saddle in rj, with deep draw running down to W. Rd  
curves rt abt 50' after.

2255 - Rubbly complex %: prob bleached andes. grading S to melandia, both cut by  
leucodio dykes.

2090 Andes. % abt 50' W of rd.

1976

July

19

Polychain N on G 3000 fr jc. with 3500:

102-255: Leuco-dio intruding feldspathized andes. At 165-170 felsite perch comes up thru andes & sills out along base of leuco-dio. Small quarry cone gul pit 220-320.

334 small % of melo-dio.

392 centre of 1st W. curve on rd N of jc.

428-461: pale grn,  $\frac{1}{2}$  g.d. Minor stream at 435.

461-465 - andes.

593-633 - alashite, poss. a phase of the felsite.

633-650 andes, intruded by the alashite.

650-802-1s, overlain by andes. for 1st 30'.

866-874 - 1s.

925-45 - 1s. % off to W. ending with prod. sink hole bs. rd., then no more %.

ca. 130 centre of 1st out-curve

Chain S on G 3000:

0-87 at 175°

Small % of melo-dio on W side of 2500 at jc.

53-151 melo-dio. 202° fr 87-300'

234-249: intimately mixed melo-dio &amp; leuco-dio.

277-408 - mostly melo-dio, prob rexted andes. Much dyked by leuco-dio at 328.

197° fr 300-552'

466-507 - 1s.

187° fr 552-900

568-625 - rubblely 1s. on both sides of rd.

633-765 - andes, dyked by leuco-dio, on W side. Some felsite.

701-715 - leuco-dio 25' E of rd.

835-88 - 1s on W side.

955-85 - 1s on W " , then a stub runs 202° for 170', with 1s. % on rd.

Main rd runs 110° fr 984-1200

1030-80 1s. on both sides

117° fr 1200-1284, 130° fr 1284-1350, 135° fr 1350-1500.

1255-1310 1s on SW side

1310-45 andes, cut by leuco-dio.

1488-63 mostly leuco-dio, on W side.

1435-90 1s. 30' SW of rd.

1976

July 21: Trace SEct. of N ls fr G8000 to 3500, then traverse N to NE summit. Miss N rd on way down & come out at end of G8000. Rain just abt all day.

S ct of N belt of ls runs 285° for 1st 100' above G8100.

Pass flag 12N15E in area of no % & little float

Alt. rdg 2130' where edge of ls running 340° Running 310° abt 300' NW.

" " 2220' on edge of G3500, directly above & maybe 150' back, at polychrome 1360'.

Alt. rdg 2480' on NE summit of Renfrew basin at 2 PM - on ls, which exts at least 500' S bt being interrupted by 1-dio.

On way down W ridge meet an area of f/g intrus. poss. felsite, alt. rdg. 2225' not more than 50' below top. Ls rid betw dykes 50' lower.

Alt. rdg 1880' ~~at~~ at N end of G8000, where come out at 3.35 PM

" " 1540' at foot of " at 4.00 PM, -85' at cabin at 5.15 PM

" " 1500' " " " " " 10.40 AM, -80' " " " 9.50 AM.

1976  
July

21 Alt. rdg - 80' at cabin at 9.50 AM.

" " 1500' at foot of G 8000 at 10.40 AM.

July 22 " " - 75' at cabin at 11.20 AM, &amp; 1775' at noon at jct of 3400 with 3000

Fr 1500' polychain pt., pace 5 on G 3000:

0-80' - rubbly andes or dia along rd, with scat'd ls % up on low rj to W.

175-250 ls. % on E side of rd. Also at 175' is an % of 40' W of rd  
of leuco-dia.

270-280 small % of ls on W side

300-340 - meta-dia, foll'd by leuco-dia

340-360 - ls.

360-400 - no %, but form of surf. sugs. underlying ls.

400-900 - ls % on W. 460 is app. ~~put ward curve of 3400~~ <sup>High up rd</sup> loop of 1

670-950 - sharp rev. Curve to W, crossing rj.

850-1060 - 1% % on E.

1060-1280 - 1% % on W.

1280-1510 - 1% % on E, pass. with andes. immed. S.

1650 - pass small % of leuco-dia on E side

1800 - bend fn at 2000' in rj. Scat'd small % of leuco-dia  
intruding a small rock, pass andes.

A large flat area W of 1500-1800.

N end of G 3000 is on a minor draw a few 100 feet S of a major one. Polychain back  
fr N end:

0-160 % of ls. cut by a number of dykes, more or less vertical.

180-202 andes, rexted &amp; skarned in part, small deep cave.

208-259 rubbly ls.

289-300 ls. It is a bit sheared &amp; dark. It runs 282° for abt 100'

300-460 andes. Seems to overlie ls. Skarned in part.

478 centre of 1st out-curve. Lenses of meta-dia here.

460-546 mixed andes &amp; meta-dia.

570-610 ls % 25' back fr rd. W edge runs back 280° for abt 150'; then there is  
more ls % on hillside to N.

605-615 ls in rd cut.

670-922 meta-dia with some leuco-dia.

922 one of 2 centres of main in-curve

966-1017 meta-dia, grading to andes at 1030, Feldspathized andes of 1105 at 1170 <sup>common meta-dia</sup>

1082 2d centre of in-curve

1217-37 meta-dia

1244-71 andes

1271-1350 - meta-dio.

1350-1489 - meso-dio, grading to leuco-dio at end, where a def. under ncn.

1437 centre of sharp outcurve

1650 sharp pt. of outcurve. Meta-dio here.





## NEct. of ls of zones 9-11.

1976  
July  
23

- Alt. rdg -70' at cabin 9.30 AM, & 1520' at foot of G8000 at 10.05 AM.
- " " 1630' at small ck at GML nr NE ct. at ls W of gulch pit.
- " " 1790' where reach rj crest at small 3/4 of felsite & andes, fo.  
Mostly andes  $\frac{1}{2}$  up rj.
- " " 2045' at 11.45 AM, where ls NE ct. crosses rj. on a local strike of 290°. Slight saddle  $\frac{1}{2}$  W. Cut by a 10' felsite dyke lying 280° G55, & by thicker dykes of andes.
- " " 2020' at 12.10 PM at nrly-dry swamp in saddle, & 2020' at 12.40 PM.
- " " 1860' " 1.25 in ck gully fp on ls, prob. not far above ct.
- " " 1730' " 1.55 at jc. of rockslide gulch with ck.  
Cross another trib. at abt same elev, then climb onto  $\angle$  of main slope,
- " " 1875' at 2.30 PM
- " " 1950' at 2.45 at ls. ct. fg. on this  $\angle$
- " " 1950' at 3.05 at fg. on ls  $\times$  ct. on  $\angle$  to next ck.
- Rtn to truck 4.35. K photos G#7 of G8000 hillside.
- Alt. rdg 1490' at foot of G8000 at 4.55.

Sat-Sun, July 24-25

- ✓ Granite 3510 - ls. bands - Sat  
✓ " 3000 - ls. at N end, trace  
above & below.  
- trace narr. ls down?

Hookup road

Other day

- ✓ Fir. ls. sec'n on 3000  
S part of 3400  
Trace main S ls. betw 3000 & 3400, &  
down W fr 3000.

Other traverses

1. Up S ct. N ls. fr G 8000 to 3500, walk to N end, up to hill top, then down rj to gvl. pit.
2. Trace ls. <sup>NE</sup> ct. W on Hem. slope fr G.M.L.
3. Climb to zone 9, then up rj to summit, to look for suspected monz.
4. If found, trace monz. ct.
5. Try to locate SW ct. of zone 9-10 ls.
6. Trace gvl pit fault fr. upper R. ck. to G. 6200. Also trace NE ct. of zone 9-10 ls down to ck.
7. Zone 1 rd by Polychain
8. Find out what happens to S ls. belt twd R. ck.  
- Sun.

Mon, July 26

Gas & M (wallet)

More than 1 day rain: → Victoria

1 day rain: 5 and 3400.

No rain: 26 over

1976  
July  
24

Alt. rdg. -230' at cabin at 9.45 AM, 1875' at 10.25 at jct 3500 &amp; 3510.

Polychain 3510 fr jct.

7-45 meta-andes on S

72 3510 cuts thru to W side of rd &amp; starts curve fr W to N.

107-184 leuco-dio on NE ct. is sheared.

184-208 mela-dio. knife-sharp, sly sheared ct.,  $010^{\circ} 72 E$ .208-330 leuco-dio. 3' of andes at 271. At 305 a thin andes dyke is offset 2' rt. on open <sup>fract.</sup>

210 end of 1st rd. curve.

330-69 meta-andes. Initial ct. lies  $010^{\circ} 75 E$  & is sheared over 3". Rock grades to mela-dio at 337, then back to andes at end.

367 start of 2d curve onto W slope, ending 405.

369-444 q.d., locally grading to leuco-dio, ctg. nens of mela-dio. 397-440 - block of <sup>cg</sup> gneissic meso-dio agnst rd, with q.d. cting over top. Mela-dio or meta-andes comes in underneath at 425. Cts. are // to gneissosity. Mela-dio dives 28 meso-dio pitches.

444-448 leuco-dio

450-66 <sup>cg</sup> meso-dio480-502 s.z. betw. <sup>cg</sup> meso-dio above & meta-andes below lies  $010^{\circ} 35 E$ 536-60 meso-dio, locally q.d. Ends with s.z.  $020^{\circ} 85 W$ .560-612 mela-dio, cut by a q.d. dykelet. Ct. at end lies  $040^{\circ} 47 E$ .508-510 rib of mela-dio  $\frac{1}{2}$  30-70' W of rd.612-45 <sup>cg</sup> meso-dio., gneissic645-50 <sup>f/g</sup> mela-dio.

722 Centre of in-curve.

771-921 mela-dio, cut by 2 hbc &amp; 1 alkalic dyke. Andes nen at 817; also 828-42.

Meso-grading to leuco-dio 868-83. Pass. meta-andes at end.

936-1017 mela-dio. 3' andes. dyke, sp. 77, at 972' lies  $000^{\circ} 60 E$ .

1085' edge of timber.

1048-1472 mela-dio. leuco-dio 1132-53. Very mafic & <sup>cg</sup> of 1200, & cut by small feldspar-pg. dykes.

1375' Centre of 2nd incurver.

1601' " of major out-curve.

1563-1709 mela-dio, ending at andes dyke,  $020^{\circ} 73 E$ 

1709-25 leuco-dio

1740-84 mela-dio

1802-04 small  $\frac{1}{2}$  (?) of ls. in rd. bed.

1825-30 ls. block in bank.

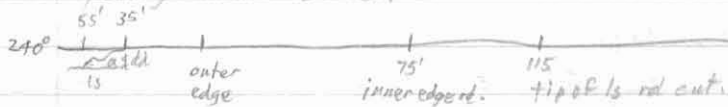
1837-45 pass ls  $\frac{1}{2}$  in rd. bed.

1885 Centre of in-curve, at sharp draw

1885- ls

Fr N end of ls. % it is  $252^\circ$  ( $070^\circ$ ) to sharp out-bend of rd at 15 ct., &  $318^\circ$  to gentle outcurve of GML in timber nr zone 7, Leuco-dio % 60' frd zone 7. This ls % area forms a low rji, trending  $000^\circ$ , sep'd fr main hillside by draws & flats.

In rd cut, N end of ls. is enveloped in skarned andos. Leuco-dio in quarry around corner.



SE ct. of ls (polych. 1885) runs 100' up draw at  $045^\circ$ , then swings to N.

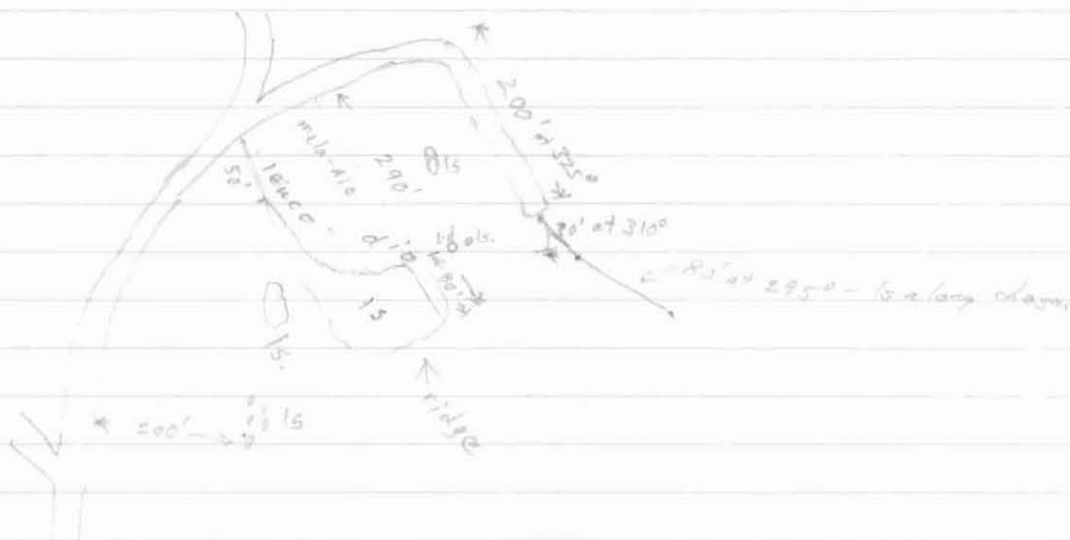
Fr a small ls % it is abt 300' E  $\perp$  to 3500, then 400' S to spur nr head of E ls.

1976

July

25 +25 of view toward grl. pit fr leuco-dia corner, G fr abt 100' fr ls. cr.

+27 of K 11-15 fr 1st ls. cr.

Back to G 6000 to find out what happens to s belt ls at & W of R Ch.  
o/c at jc with spur above GG200:

% of mixed diorites abt 20's of BS 11W. Abt 180' at 263° to lower end of paleo.  
No % around BS 10W. 60' at 010° to bend of small ck canyon to left.

BS 9W is on s rim of this canyon.

Fr 100-150' above Renfrew Ch rock in canyon is melo-dia; ct. with ls. not seen.

Melo-dia % 50' above R. Ch.

Fr mouth of canyon ck, melo-dia is exp. at short intervals along rt bank of R Ch.

In ck bed there is a 15' gap betw NE edge of ls exp. & melo-dia %. In W bank  
ls seems to dive under melo-dia, leuco-dia, & meso-dia, not making canyon rim.

K photos 16-18 of E hillside fr brj at edge of timber.

Fr E bank of R. Ch. opp. edge of timber go 35-50' over meso-dia & andes, then over  
ls. Abt 40' of ls exp. in E bank, none in W bank, & no % of it nearby in  
slash. A 30 or 40' gap to N, then intermittent % of melo-dia, cut by  
leuco-dia dykes.

1978  
July  
26

Alt. rdg -110' at cabin 10.30 AM, & 1645' at ck on GML W of saddle pit at 11.15 AM.

Trace NE ct. of zones 9-11 ls to jc. with inferred fault at bend of ck, then try to trace fault SW. Hit a line of sink holes trending  $148^\circ$ , in a flat where only all %s are ls. Cross sev. more trenches crossing projected strike of fault, some of them foll'g feldspar-rich or leucodioric dykes. These dykes grow more common as approach crest of low rj. However, there is abundant ls. % across rj nose, & only 2 andes dykes.

Large dyke of andes, melandioric, & leucodioric ~~is~~ higher across rj nose; NW ct. with ls appears to trend  $035^\circ$ . A whole series of sub-11 dykes of melandioric & leucodioric intrude ls up to low E summit of rj. Also some felsite dykes.

No % at lv summit area on  $285^\circ$  brg. Pass blue flag 32 N 24 W.

Intrus. complex along upper N slope of rj as it slowly descends to saddle. Cross R. ck. at end of GML; pass % of ls in S bank, otherwise no rock anywhere around. Climb up other branch of GML to end - 1300' Paul rock. Direction of this rd fr upper end is  $075^\circ$ . No bedrock in rd cut.

No % off end of this br. of GML, but much g. m. float; also some felsite & some big blocks of melandioric. ~~The~~ Climb up abt 200' above end of rd. Progn. of melandioric float increases rapidly as go E on contour. Very little ls. float in this area.

1976  
July  
27

- Alt. rdg - 115 at cabin 9. 20 AM, & 1565' at small ck w of saddle pit, at ct., at 10.10 AM.  
 " " 1690' at GML at ck at foot of trail to zone 9, at 10.30 AM.  
 " " 2600' at E end of nr-level part of rj above assumed pos'n of zone 9, at 11.55 AM, & 2650' at 12.10, where stop for lunch, abt where flagging leads down to zone 10. A few andes. dykes, but predom. ls. to here.  
 " " 2625' at lunch site at 12.55 pm. An % of leuco-dio just here.

Sp. 78 of q. monz. % abt 100' along rj. - flag.

Alt. rdg 2715' at 1.30 on a summit which must be 2d one, ft. <sup>Mea-dio</sup> ~~Andes~~ % here, but sp. 79  
 q. monz along rj. to here & along N slope of summit. +X photos 7-10 to NW & NE, & 11 to SE. Actually most of rock on summit is q. monz.

Alt. rdg 2595' in deep saddle at 2.10 PM. Look out over bluffs & zone 11.

q. monz. % just w of saddle +X-12 down the dropoff

Alt. rdg. 2700' just below NE end of level sec'n of rj. - actually it is the 2nd small summit on map, all underlain by q. monz, which is growing porph. with a % to dense grass, sp. 80. +X-13, 14 of view to NW, +X-15 at Mt. Renfrew, 16 of view down into upper Renfrew Ck valley.

Ls. - q. monz. ct. appears to strike 305° across rj crest; nr it the ls is much intruded by andes. Trace ct. SE down R Ck slope to alt. rdg 2410, then to 2240' at 5.30.

Alt. rdg 1740' back at GML at 5.55. Sp. 81 of lgt-coloured intrus. into andes. in rd ditch.

Alt. rdg - 145' at cabin at 7.10 PM



1978  
July  
28

Alt. rdg -20' at cabin 9.15 AM

" " 1630' in saddle pit at 10.05 AM. K19 of W wall of pit.

" " 1675' on N slope at rems. of ls in andes &amp; skarn immed N of a felsite dyke.

% fu This is part of larger %c, which has ls. at base at abt 1650'. Fract. in felsite lies  $110^{\circ}50'S$  - might  $\parallel$  C.

Alt. rdg. 1910' at 1 PM at ls. exp. just S of rj. crest. Downslope to N is a mixture of andes, leuco- & meso-dio, & felsite, the andes, locally somewhat skarned. This ls. is % & is transected by a northerly-strtg felsite dyke. Small % of andes to NE. 100' E, nr the NE. cr. of logging, ls. comes down the steep W hillside to extreme top of draw in N slope, but there is andes on str, ~~so~~ pass a small left-hand fault here.

LS seems to run down just SW of rj crest. On crest at alt. rdg. 1860' (2.15) rock looks like andes tuff, with <sup>sp. 82</sup>  $\rho$   $050^{\circ}45'SE$ . - appears to be an nca in meso-dio.

A larger % of tuff just N of rj crest at alt. rdg. 1810', <sup>(2.40)</sup>  $\rho$   $110^{\circ}45'S$ . Ls may overlie it.

Ls ct. appears to have been mucked up by intrus. complex - to the extent that ls nca's occur in leuco-dio.

Abt 50' W of prec. tuff %c, ls is in actual ct. with tuff,  $\rho$  here being  $280^{\circ}65'S$ .

Tuffs are skarned nr ls.

Projected tuff-ls ct. would pass abt 100' NE of saddle pit.

Alt. rdg 1690' in pit at 3.25 PM.

Fr last pt reached in polychain of GML, start on at trg.  $322.5^{\circ}$  for 271' to cr. of pit.

17-80 ls.

171-186 ls.

186-90 felsite porph.

190-208 leuco-dio

218-271 meso-dio

240-69 ls. rubble.

Fr 271' pt. it is 192' at  $009^{\circ}$  to NE cr. of saddle gul pit. Rubbly ctus for 31'. Fr 300' at  $322.5^{\circ}$ , it is 44' at  $289^{\circ}$  to SW cr of pit, then 99-167 at  $259^{\circ}$ , with % to 92'. 290' fr 167-300', with % fr. 270'. Fr 2d. 300' it is 195' at  $339^{\circ}$  to rd. curve, with % to 105', then  $266^{\circ}$  to 300'. % <sup>187-243</sup> ending with problematical andes tuff. A further 300' at  $299^{\circ}$ , ls. strg at 177'. Then 130' at  $304^{\circ}$  to W side of rd, then 300' to 300' on E side of rd. <sup>190-219</sup> 90' more by pace at  $292^{\circ}$  to N side of rd at cks.

Alt. rdg.  $\pm 50'$  at cabin at 6.45 PM.

1976  
July

29. Alt. rdg +75' at cabin at 9.45 AM, & 1910' at 10.30 on G3400, nr jc with  
 3000 & abt 10' lower. <sup>Alt. rdg 1900' at same spot, at 12.45 PM.</sup> Poly chain N fr this jc, on 3400.

- 0-147 333° - ls. bank of 3000.
- 147-300 328° - no % 300 is near truck.
- 300-476 328° - " "
- 476-600 328° - rubble ls % 476-521. No % 521-600.
- 600-710 343° - small draw above at 625. % of mixed leuco- & melo-dio 630-45.  
 % of ls & andesite 40' back fr 708; - 719'.
- 710-813 353° - melo-dio 731- , with a bit of skinned leuco-dio at 757 (2° low)
- 813-900 340° - 868; meso-dio 868-79; andes 879-942, (3° low)
- 900-1200 336° - intruded by meso-dio dykes 905-92; leuco-dio 942-70; andes 970-84,  
 " by melo-dio; 984-1060 mostly leuco- grade meso-dio, growing  
 gneissic; melo-dio 1060-84; leuco-dio 1084-95. melo-dio 1110-23  
 mostly leuco-dio 1110-36. leuco-dio 1153-~~67~~<sup>79</sup>; meso-dio 1179-1200.
- 1200-1266 349° mostly " " 1200-53; meso- to melo-dio 1253-75.
- 1266-1396 354° 1302-18, leuco- to meso-dio, with melo-dio in upper part of cut. 1318-53,  
 1396-1500 346° mostly meso-dio in upper part of cut, foll'd by melo-dio to 1364.  
 1372-95, andes to flg melo-dio; 1395-1442, meso- grading  
 to leuco-dio, ct with prec. rock a slip lying 020° 82 E. (truck now at  
 1400); andes dyke at 1436; 1442-67, melo-dio; 1467-1506, leuco-dio  
 locally grading to meso; generally meso-dio 1506-44. Melo-dio 1544-1600
- 1500-20 339° 1600-04, rubble zone lying 050° 84 NW. 1604-59, melo-dio,  
 1540-1644 330° locally grading to andes. 1659-1727, leuco-dio, cut by narr. andes  
 1644-1730 324° dyke, & grading to meso-dio, then back to leuco-dio at 1708.
- 1730-1800 312° 1727-37, melo-dio & andes. 1737-1851, leuco-dio, with shear along  
 andes. at 1745; lineations on slip surf dip gently rt; andes nens at  
 1800. 1851-60, mostly andes. 1860-87, leuco-dio with andes nens. 1887-  
 1853-2007 291° 1983, meso-dio, with some andes nens. 1983-90, meta-andes.
- 2007-2100 301° 1990-2005, meso-melo-dio. 2005-17, mostly meso-dio. 2017-22, melo-dio.  
 2022-2110, mostly leuco-dio, grading to meso at end. Rd cut passes up  
 into vert cliff 1980-2085.
- 2100-53 315° 2123, centre of draw, above & below.
- 2153-99 327° 2164-84, meta-andes, grading to melo-dio.
- 2199-2319 348° 2240-2310, intras. V, with melo-dio pass. probem. Much sheared.
- 2319-2400 329° 2310-34, leuco-dio. 2334-50, melo-dio. 2350-80, meso-dio.  
 2380-2478, " " , mainly, grading to meso at end.
- 2400-34 328° Small quarry runs back as much as 40' fr 2412-80.
- 2434-81 334° Centre of deep draw above & below at 2498.
- 2481-2620 005° 2535-60, meso-leuco-dio.