

PROPERTY FILE

92C/8E  
92C-73

006062

1962

Z 12900 E

13000 E

1850 N

1800 N

1750 N

1700 N

1650 N

1600 N

1550 N

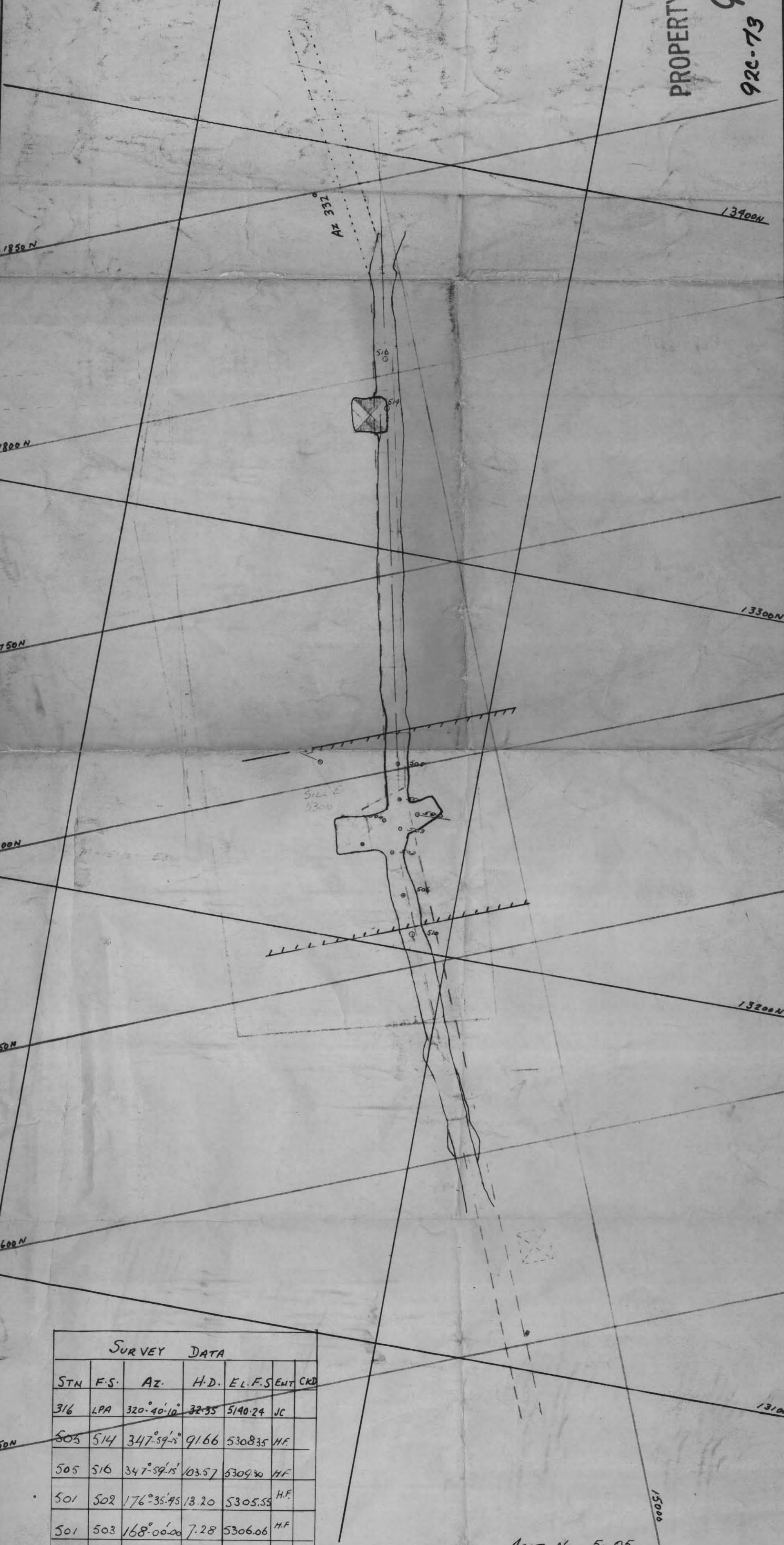
13900 N

13300 N

13200 N

13100 N

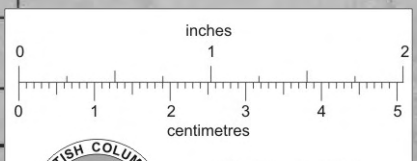
15000



SURVEY DATA

STN	F.S.	AZ.	H.D.	EL.	F.S ENT	CRD
316	LPA	320°-40'-10"	32.35	5140.24	JC	
505	514	347°-59'-8"	91.66	5308.35	H.F.	
505	516	347°-59'-15"	103.57	5309.30	H.F.	
501	502	176°-35'-45"	13.20	5305.55	H.F.	
501	503	168°-00'-00"	7.28	5306.06	H.F.	
502	504	336°-00'-00"	8.35	5307.09	H.F.	
501	505	347°-59'-15"	9.45	5306.68	H.F.	
502	506	156°-00'-00"	11.40	5306.52	H.F.	
505	506	167°-12'-10"	33.46	5306.52	H.F.	
506	510	155°-54'-42"	10.59	5307.36	H.F.	
505	514	347°-59'-16"	91.66	5308.36	BC	

Acct. No. 5-05



COWICHAN COPPER CO. LTD  
SUNRO MINE  
53-1690 SUB. DRIFT, NORTH & SOUTH

LEVEL 5300  
DRAWN BY JC

1" = 20'