

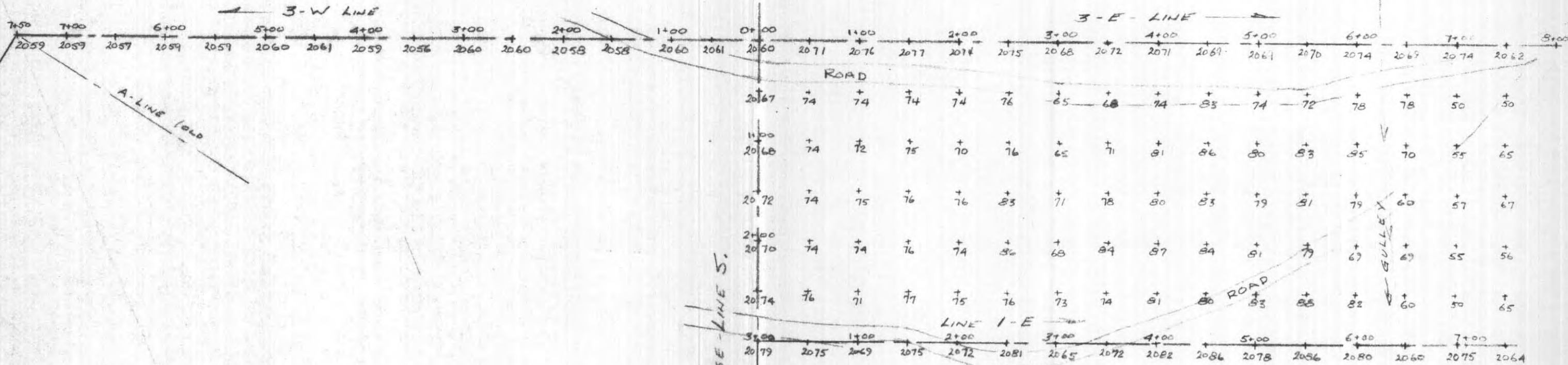
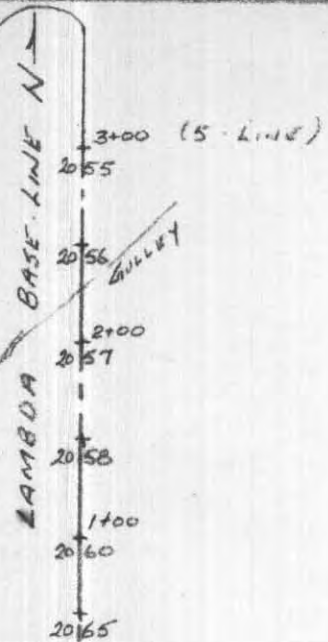
STA - READINGS

(9-LINE)

9+00	-	2053
8+50	-	2064
8+00	-	2056
7+50	-	2060
7+00	-	2063
6+50	-	2065

(7-LINE)

6+00	-	2058
5+50	-	2064
5+00	-	2061
4+50	-	2069
4+00	-	2059
3+50	-	2054



LAMBDA BASE-LINE S

2067	74	74	74	74	76	65	68	74	83	74	72	78	78	50	50
2068	74	72	75	70	76	65	71	81	86	80	83	85	70	55	65
2072	74	75	76	76	83	71	78	80	83	79	81	79	60	57	67
2070	74	74	76	74	80	68	84	87	84	81	79	69	69	55	56
2074	76	71	71	75	76	73	74	81	80	83	88	82	60	50	65

THESE READINGS NOT RELIABLE
MAGNETOMETER LOSING FLUID

STA MAG READINGS

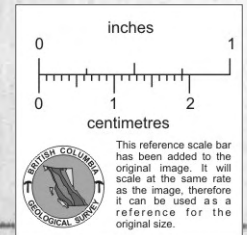
6+50	-	2077
7+00	-	2071
7+50	-	2078
8+00	-	2081
8+50	-	2080
9+00	-	2078
9+50	-	2081

EN. 106

Part 3 of 3

SHEET # 4

ALBETA MINES LTD (NPL)
MAGNETOMETER SURVEY - LAMBDA MC.
SCALE 1" = 100' - 1966 -
MAGNETOMETER READINGS IN SCALE DIVISIONS + 2076
SHARPE A-3 MAG - READ TO NULL POSITION
APPROX 26 8/8.D. - READING 2080 = 56,800 Y



005980

GKA