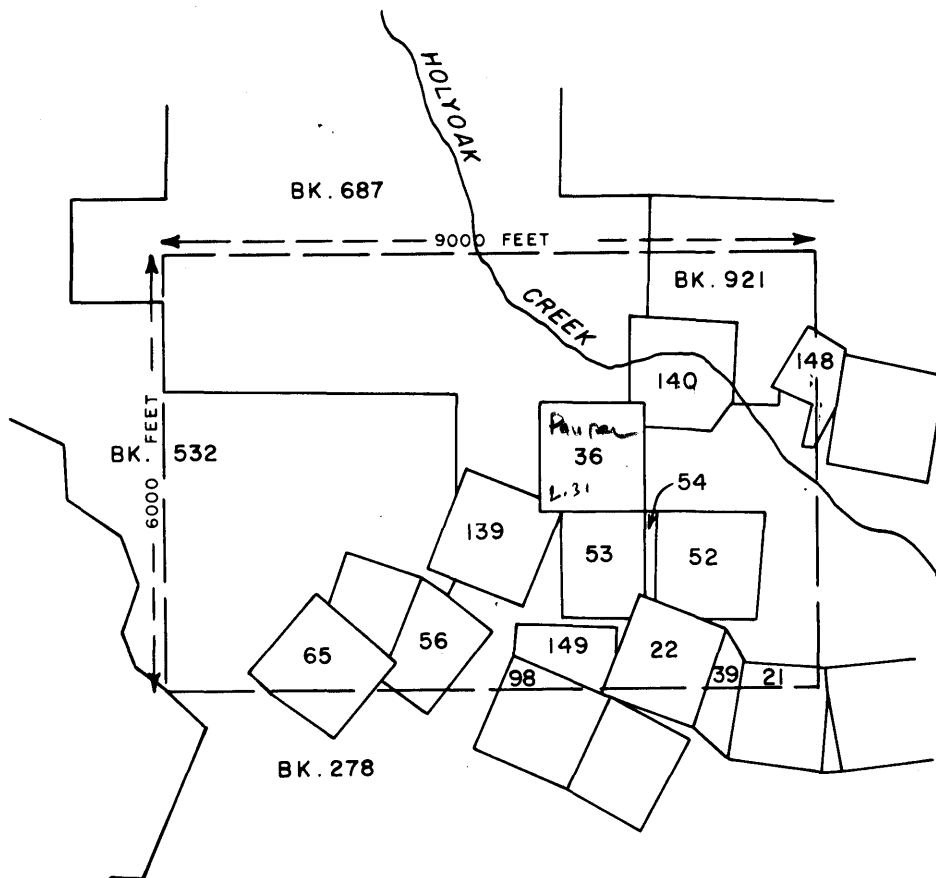


# EN. 115



## PROPERTY FILE

*Canadian Pacific* 928040

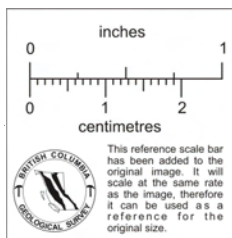
OIL AND GAS LIMITED

### PLATE 1

PORTION OF CHEMAINUS LAND DISTRICT  
(VANCOUVER ISLAND)

SHOWING - OUTLINED IN RED - AREA  
UNDERLYING WHICH MINERALS HAVE BEEN  
COMMITTED TO SHARON COPPER MINES LTD

DATE - 1/5/63  
 CONT INT -  
 AUTHOR -  
 APPROVAL BY -  
 SCALE - 1" = 1/2 MILE  
 FILE No. -



Sharon Copper Mines Ltd.Hole Number 1

<u>Footage</u>	<u>Ft. core recov.</u>	<u>% Cu.</u>	<u>Remarks</u>
0-5	3.2	0.10	Grey schist - minor pyrite, pyrrhotite & chalco.
5-10	5.0	0.45	Ditto - some covellite.
10-15	5.0	0.46	" " " , some quartz.
15-20	5.0	0.15	Grey schist, minor pyrrhotite.
20-25	5.0	0.25	Ditto, some chalco & covellite.
25-30	5.0	0.40	" " " "
30-35	5.0	0.30	Grey schist, heavy pyrrhotite.
35-40	5.0	0.10	Grey rusty schist, little mineralisation.
40-45	5.0	1.30	Schist darker - some pyrrhotite & chalco.
45-50	5.0	0.60	Light grey schist, little mineralisation.
50-55	5.0	0.26	Schist darker - heavy pyrite, pyrrhotite, some chalco.
55-60	5.0	0.23	Ditto
60-65	5.0	0.40	Ditto
65-70	5.0	0.30	Ditto
70-75	5.0	0.20	Ditto
75-80	5.0	0.35	Ditto, some chalco.
80-85	4.4	0.66	Denser, less schistose, more chalco, less iron sulphides.
85-90	4.9	0.30	No visible mineralisation.
90-95	5.0	0.65	Minor covellite.
95-100	4.8	0.25	Pyrrhotite sometimes massive, some chalco.
100-105	5.0	0.30	Light grey schist, fairly heavy pyrrhotite, a little chalco.
105-110	5.0	0.09	Ditto, with no Cu minerals.
110-115	5.0	0.75	Dark grey schist - pyrrhotite & chalco, some covellite.
115-120	5.0	0.40	Ditto, without covellite.
120-125	5.0	0.40	Ditto.
125-130	5.0	0.40	Ditto.
130-135	4.4	0.52	Ditto
135-140	5.0	1.15	Dark schist - pyrrhotite, pyrite, fair chalco, some covellite.
140-145	4.0	0.70	Ditto.
145-150	4.6	0.70	Ditto.
150-155	5.0	0.40	Ditto, less mineralisation.
155-160	5.0	0.47	Dark schist - some chalco & covellite.
160-165	5.0	0.95	Ditto
165-170	4.8	0.50	Ditto, - less mineralisation.
170-175	5.0	0.43	Ditto.
175-180	5.0	0.42	Ditto.
180-185	5.0	0.45	Ditto.
185-190	5.0	0.70	Ditto.
190-195	5.0	0.74	Dark schist - well mineralized with some increase in chalco.

PROPERTY FILE

Sharon Copper Mines Ltd.

Hole Number 2

<u>Footage</u>	<u>Ft. core recove.</u>	<u>% Cu.</u>	<u>Remarks</u>
0-5	3.0	0.30	Grey schist - some quartz, sericite, pyrrhotite, specular hematite.
5-10	4.0	0.02	Ditto.
10-15	3.5	0.02	Ditto.
15-20	5.0	Tr.	Ditto.
20-25	4.0	0.05	Darker schist - some chalco & covellite, usually with quartz.
25-30	5.0	0.12	Ditto.
30-35	4.6	0.35	Ditto.
35-40	5.0	0.30	Ditto.
40-45	5.0	0.20	Ditto.
45-50	5.0	Tr.	Schist lighter - mineralization less - largely coarse pyrrhotite.
50-55	5.0	0.02	Ditto.
55-60	5.0	0.35	Ditto.
60-65	5.0	0.05	Darker schist.
65-70	5.0	0.07	Ditto.
70-75	4.6	0.12	Ditto.
75-80	3.6	0.02	Ditto.
80-85	4.6	0.10	Rock denser - schistosity less evident - some lean mineralization.
85-90	5.0	0.13	Ditto.
90-95	5.0	0.13	Ditto.
95-100	5.0	0.15	Ditto.
100-105	5.0	0.12	Ditto.
105-110	5.0	0.10	Ditto.
110-115	5.0	0.05	Ditto.
115-120	5.0	0.03	Ditto.
120-125	5.0	0.03	Ditto.
125-130	5.0	Tr.	Ditto.
130-135	5.0	Tr.	Ditto.
135-140	5.0	Tr.	Ditto.
140-145	5.0	0.15	Ditto.
145-150	4.6	0.10	Dark schist - more schistose - very little mineralization.
150-155	5.0	Tr.	Ditto.
155-160	5.0	0.22	Ditto.
160-165	5.0	0.45	Dark schist - fairly well mineralized - some chalco.
165-170	4.8	0.32	Ditto.
170-175	5.0	0.10	Ditto.
175-180	5.0	0.07	Ditto.
180-185	5.0	0.10	Ditto.
185-190	5.0	1.20	Ditto.
190-195	5.0	0.10	Ditto.

PROPERTY FILE

Node Number 1

<u>Footage</u>	<u>Ft. core recove.</u>	<u>% Cu.</u>	<u>Remarks</u>
195-200	2.3	0.47	Light grey schist - more pyrrhotite, less chalco.
200-205	4.9	0.50	Ditto.
205-210	4.8	0.40	Ditto.
210-215	5.0	0.47	Ditto.
215-220	5.0	0.30	Denser, less schistose - some quartz & epidote. Heavy pyrrhotite.
220-225	5.0	0.22	Ditto.
225-230	5.0	0.10	Ditto.
230-235	5.0	0.03	Ditto.
235-240	5.0	0.07	Ditto.
240-245	5.0	0.05	More schistose - mineralized with pyrite & pyrrhotite - no Cu minerals.
245-250	5.0	0.20	Ditto.
250-255	5.0	0.08	Less mineral - increased metamorphism.
255-260	5.0	0.14	Soft, gougy, some specular hematite.
260-265	5.0	0.10	Ditto.
265-270	5.0	0.10	Dark schist - no mineral but specular hematite.
270-275	5.0	0.08	Ditto - with some pyrrhotite.
275-280	5.0	0.08	Ditto.
280-285	5.0	0.10	Ditto.
285-290	4.6	0.10	Ditto.
290-295	5.0	0.25	Ditto - a little chalco.
295-300	4.6	0.15	Ditto.
300-305	3.1	0.20	Gneissic - quartz & schist bands - pyrrhotite.
305-310	5.0	Tr.	Less gneissic but heavily quartzose, mineralized with coarse pyrrhotite.
310-315	5.0	Tr.	Ditto.
315-320	5.0	Tr.	Ditto.
320-325	5.0	Tr.	Ditto.
325-330	5.0	0.17	Ditto.
330-335	5.0	Tr.	Ditto.
335-340	5.0	Tr.	Ditto.
340-345	3.0	Tr.	Ditto.

PROPERTY FILE

Hole Number 2

<u>Footage</u>	<u>Ft. core recov.</u>	<u>% Cu.</u>	<u>Remarks</u>
195-200	5.0	0.15	Light grey schist - pyrrhotite only noted.
<del>200-205</del>	5.0	0.05	Mostly broken quartz.
205-210	4.5	0.60	Dark schist - some mineralization.
210-215	5.0	0.18	Ditto
215-220	5.0	0.16	Ditto, some talc.
220-225	5.0	0.07	Grey green quartz. Crystal structure lined parallel to planes in schist, giving schistose appearance to quartz. Little mineralization - mostly pyrrhotite & specular hematite.
225-230	4.5	0.11	Ditto.
230-235	5.0	0.07	Ditto.
235-240	5.0	0.12	Ditto.
240-245	5.0	0.34	Ditto.
245-250	5.0	Tr.	Ditto.
250-255	5.0	0.05	Ditto.
255-260	5.0	0.02	Ditto.
260-265	5.0	Tr.	Ditto.
265-270	5.0	0.03	Ditto.
270-275	5.0	0.10	Ditto.
275-280	5.0	0.07	Ditto.
280-285	5.0	0.02	Ditto.
285-290	5.0	0.01	Ditto.
290-295	5.0	Tr.	Ditto.
295-300	5.0	Tr.	Ditto.
300-305	5.0	Tr.	Ditto.
305-310	5.0	0.01	Ditto.
310-315	4.8	Tr.	Ditto.
315-322	7.4	0.02	Ditto.

PROPERTY FILE

Hole Number 3.

<u>Footage</u>	<u>Ft. core recov.</u>	<u>% Cu.</u>	<u>Remarks</u>
0-5	4.5	0.85	Largely quartz - some covellite.
5-10	4.8	0.23	Grey schist - some covellite.
10-15	5.0	0.52	Ditto.
15-20	5.0	1.20	Ditto.
20-25	5.0	0.16	Very quartzose - heavy pyrrhotite - no visible Cu minerals.
25-30	5.0	0.10	Ditto.
30-35	5.0	0.07	Ditto.
35-40	5.0	0.15	Ditto.
40-45	5.0	0.15	Ditto.
45-50	5.0	0.13	Ditto.
50-55	5.0	0.10	Ditto.
55-60	5.0	0.05	Ditto.
60-65	5.0	Tr.	Ditto.
65-68½	3.5	NA.	Ditto. Last part of hole gneissic quartzose structure - looks like possibility of approach to diorite mass.

PROPERTY FILE

Sharon Copper Mines Ltd.Hole Number 4.

<u>Footage</u>	<u>Ft. core recov.</u>	<u>% Cu.</u>	<u>Remarks</u>
0-5	4.8	1.12	Grey schist - some chalco & covellite - much quartz.
5-10	5.0	2.48	Ditto - less quartz - more chalco & covellite.
10-15	5.0	0.43	Ditto - leaner - much pyrrhotite.
15-20	5.0	0.14	Grey talcose schist - very little mineral.
20-25	5.0	0.50	Ditto.
25-30	5.0	Tr.	Ditto.
30-35	5.0	0.06	Ditto.
35-40	5.0	0.02	Ditto.
40-45	5.0	0.05	Ditto.
45-50	5.0	0.05	Ditto.
50-55	5.0	0.02	Ditto.
55-60	5.0	0.11	Ditto.
60-65	5.0	0.15	Ditto.
65-70	5.0	0.30	Ditto - more mineralisation, but not much chalco.
70-75	4.8	0.27	Ditto.
75-80	4.7	0.15	Ditto - some increase in pyrrhotite.
80-85	5.0	0.32	Ditto - less mineralization.
85-90	5.0	0.20	Grey schist - a little covellite.
90-95	5.0	0.23	Ditto - a little chalco.
95-100	5.0	0.12	Ditto - less mineralization.
100-105	5.0	0.05	Ditto.
105-110	5.0	0.32	Grey schist - more mineralization - some chalco.
110-115	5.0	0.26	Ditto - some covellite.
115-120	5.0	0.34	Ditto - heavy pyrrhotite.
120-125	5.0	0.25	Grey schist - fairly heavy pyrrhotite.
125-130	5.0	0.22	Ditto - some spotty chalco.
130-135	5.0	0.35	Ditto.
135-140	5.0	0.10	Ditto - a little chalco & covellite.
140-145	5.0	0.23	Ditto.
145-150	5.0	0.44	Ditto - fair chalco.
150-155	5.0	0.15	Rusty schist - lean - some pyrrhotite.
155-160	5.0	0.19	Grey schist - some pyrrhotite.
160-165	5.0	0.47	Ditto - some streaks chalco & covellite.
165-170	5.0	0.26	Grey schist - some chalco.
170-175	5.0	0.29	Ditto.
175-180	5.0	0.03	Rusty shattered schist - very lean.
180-185	5.0	Tr.	Ditto.
185-190	5.0	0.12	Grey schist - some pyrrhotite and pyrite.
190-195	5.0	0.02	Ditto.
195-200	5.0	Tr.	Ditto.
200-205	5.0	0.22	Ditto - less pyrrhotite and more chalco.
205-210	5.0	0.25	Ditto.

PROPERTY FILE

Hole Number 4

<u>Footage</u>	<u>Ft. core recovd</u>	<u>§ Cu.</u>	<u>Remarks</u>
210-215	5.0	0.42	Ditto.
215-220	5.0	0.50	Ditto.
220-225	5.0	0.45	Ditto.
225-230	5.0	0.23	Schist darker - increas in coarse pyrrhotite.
230-235	5.0	0.55	Grey schist - some fair spots of chalco.
235-240	5.0	0.43	Grey and black schist - some fair chalco in thin seams.
240-245	5.0	0.22	Grey and black schist - pyrrhotite and pyrite - minor chalco.
245-250	5.0	1.08	Ditto.

PROPERTY FILE



I N D E X

(No Reservations)



"B" Series - Early Pre-emption conveyances issued by E. & N. (Dunsmuir) 1887. Reservations: "All coal, coaloil, ores, mines and minerals".



"C" Series - Conveyances issued by E. & N. (Dunsmuir) covering sales made from 1888 to time of transfer (1905). Reservations: "All coal, coaloil, ores, mines, minerals and quarries".



"E" Series - Conveyances issued covering sales made from time of transfer (1905) to December 31, 1917. Reservations: "All coal, coaloil, iron and fireclay.



"F" Series - Conveyances issued covering sales made since January 1, 1918. Reservations: "All coal, oil and fireclay, and all mines and minerals".



Conveyances issued to Wellington Colliery Company and Canadian Collieries (Dunsmuir) Limited, under the provisions of the 1905 Agreement. No reservations.



"G" Series - First deed issued December 15, 1950, used to December 31, 1954. Reservations: "All coal, petroleum (including natural gas), and fireclay, and all mines and minerals".



"H" & "I" & "J" Series - Used from January 1, 1955. Reservations: "All minerals within, upon or under the said lands, including, without restricting the generality thereof, all coal, petroleum, natural gases and fireclay, and all mines, quarries, pits, veins, beds, strata, seams or basins containing the said minerals".

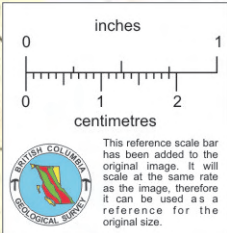
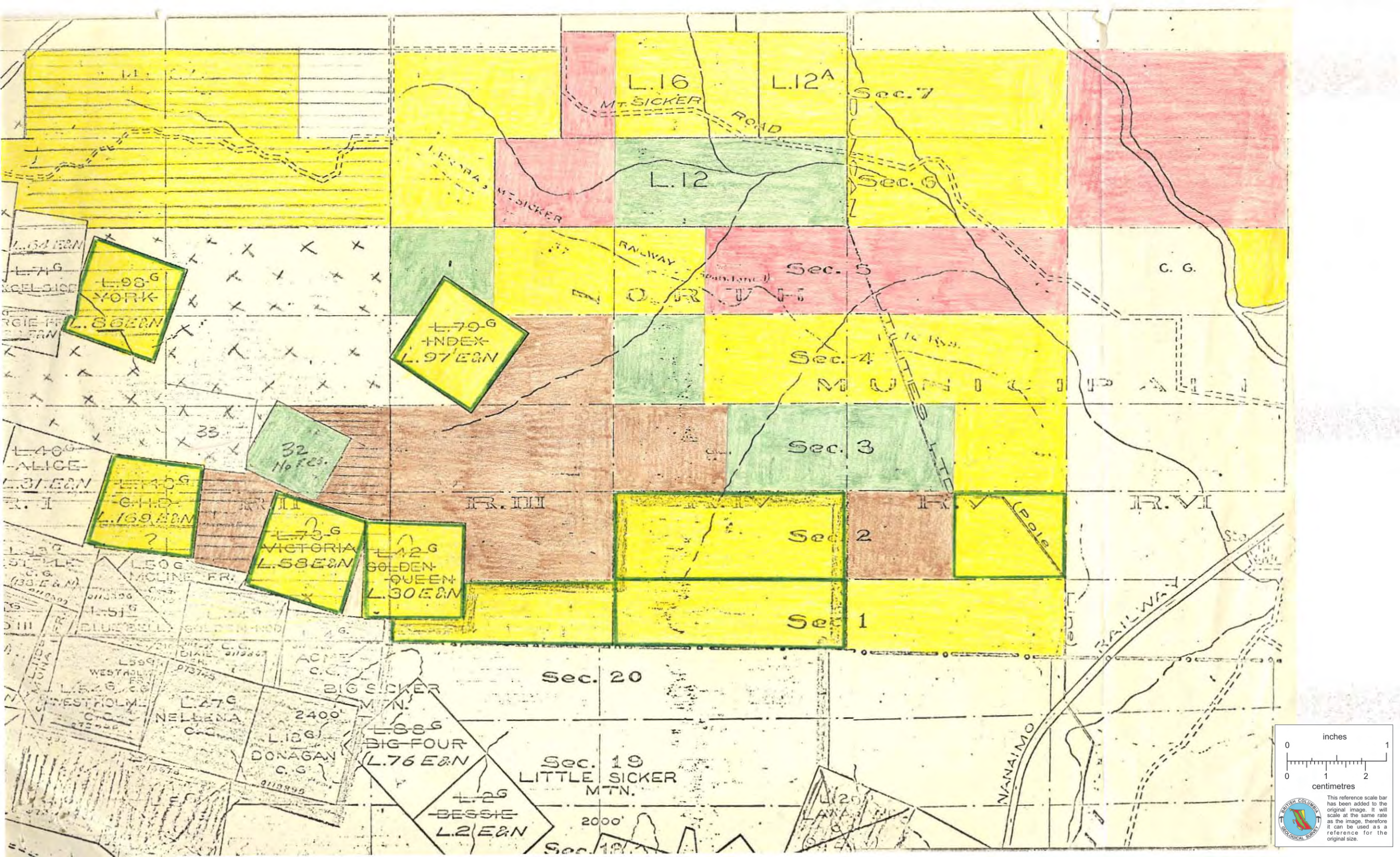


Coal and coaloil only.



Excepting coal, coaloil, iron and iron stone.

PROPERTY FILE



This reference scale bar has been added to the original image. It will scale at the same rate as the image, therefore it can be used as a reference for the original size.

92B/13W

Neil.

from J. C. Matthews. C.P.R. geologist I learned  
to-day - 11-9-63 that Sharon have done about  
1200 feet of diamond drilling in 4(?) holes and have  
suspended work. He believes the core is on  
the ground but doesn't know whether it may  
be locked up or not. Thompson Fraser (RST?) Vancouver  
is consultant for Sharon

Apparently <sup>over at Gannett & Bellines</sup> Mono to Porcupine has an interest  
in the area - possibly west of where Sharon worked -  
and proposed to do geochemical and ground magnetometer  
work

148