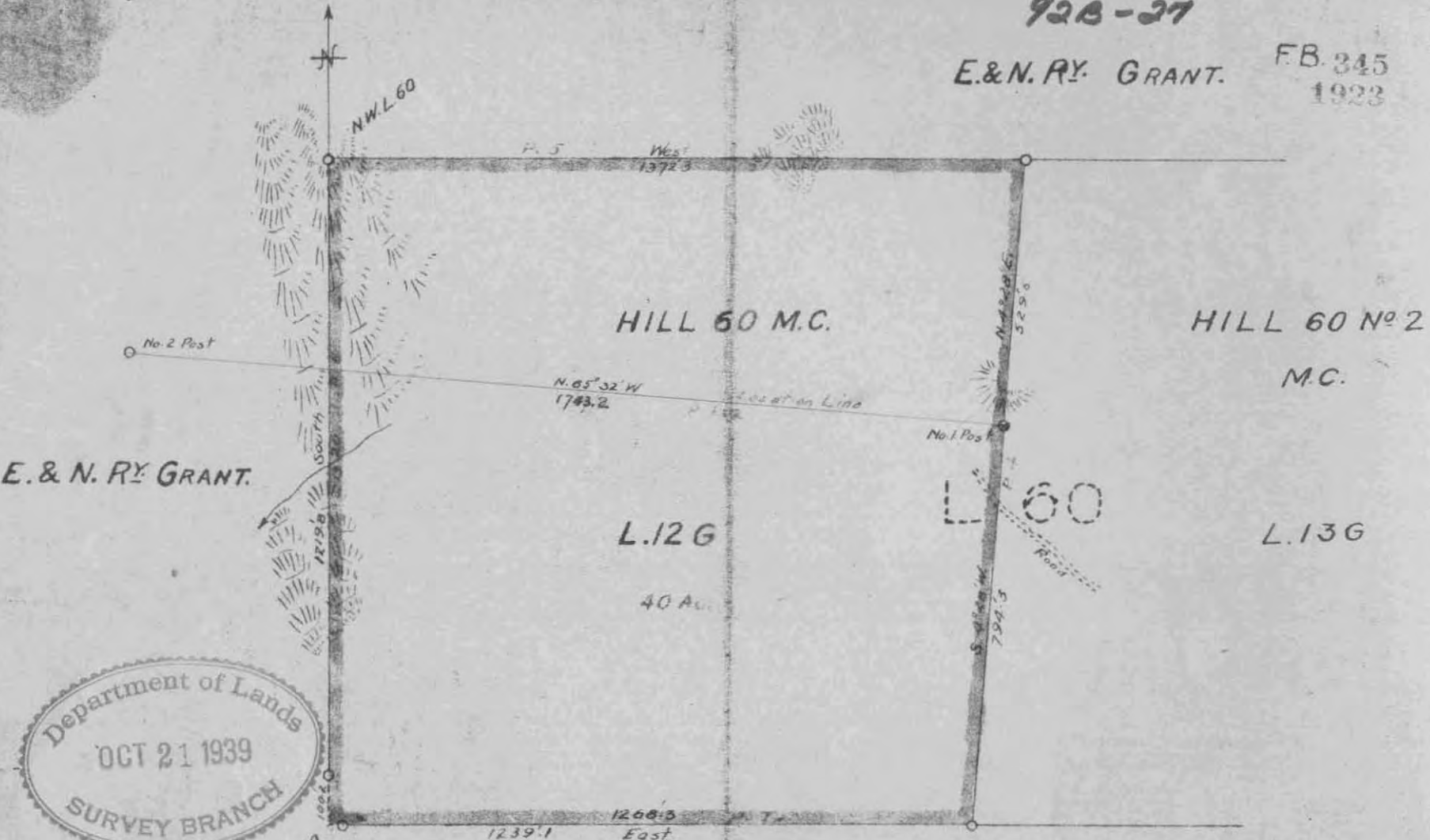


920/13W

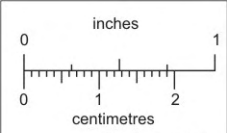
92B-27

E.&N.RY. GRANT.

FB. 345  
1923



Department of Lands  
OCT 21 1939  
SURVEY BRANCH



Scale 300 feet to an inch

E.&N.RY. GRANT.

M.S. [Signature]  
12.6.23  
July 1923

005512

FB 340  
1923

E.&N.RY. GRANT.

HILL 60 M.C.

HILL 60 N<sup>o</sup> 2 M.C.

L.12 G

L.60

L.13 G

L.60

E.&N.RY. GRANT.



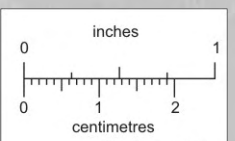
E.&N.RY. GRANT.

Scale:- 300 feet to an inch.

*W. J. Deane*  
*R. L. B.*

July 1923

92B027



This reference scale bar has been added to the original image. It will scale at the same rate as the image, therefore it can be used as a reference for the original size.