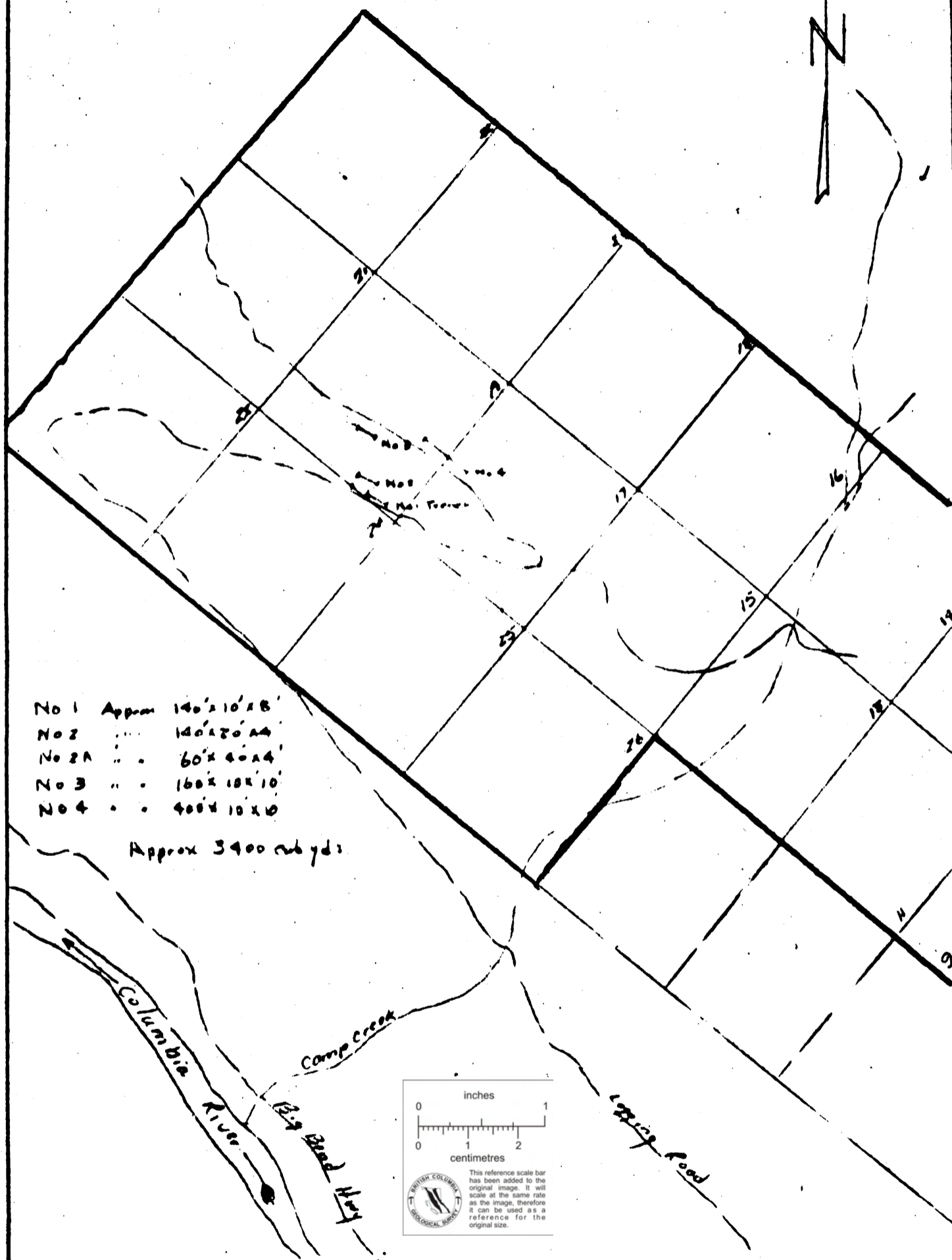
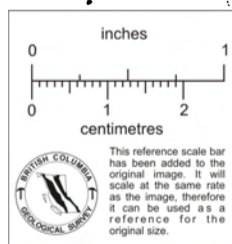


83D/1E6W
83D6C-1,2



- No 1 Approx 140' x 10' x 18'
- No 2 140' x 20' x 44'
- No 2A .. . 60' x 40' x 44'
- No 3 .. . 160' x 10' x 10'
- No 4 .. . 400' x 10' x 10'

Approx 3400 cu yds



The Consolidated Mining and Smelting Company of Canada Limited

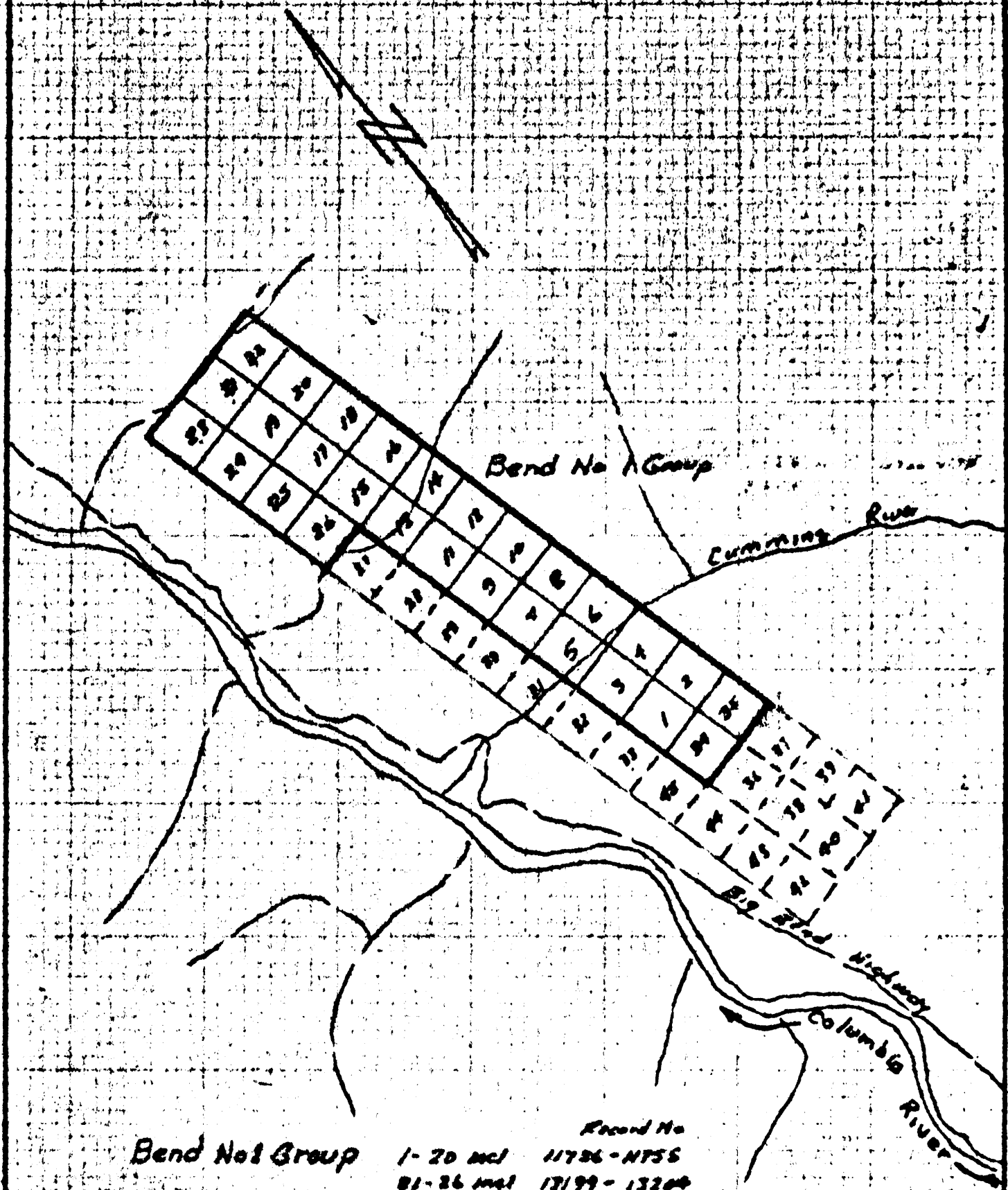
DRAWN BY: <i>ALM</i>		TRACED BY: <i>HEM.</i>	
REVISED BY	DATE	REVISED BY	DATE

Bend No. 1 Group - Trenching PROPERTY FILE

83D001

SCALE: 1 in = 100 feet DATE: Aug 1967

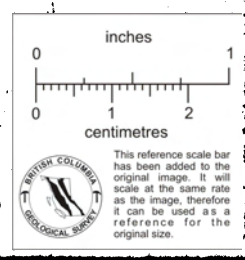
PLATE:



Bend No 1 Group

Record No
 1-20 incl 11736-11755
 21-26 incl 13199-13204
 34885 18412-18418

20 chains



The Consolidated Mining and Smelting Company of Canada Limited

DESIGNED BY: <i>ABM</i>	TRACED BY: <i>AGM</i>
DATE: _____	DATE: _____
_____	_____
_____	_____
_____	_____
_____	_____

Bend No 1 Group

Golden M.D.

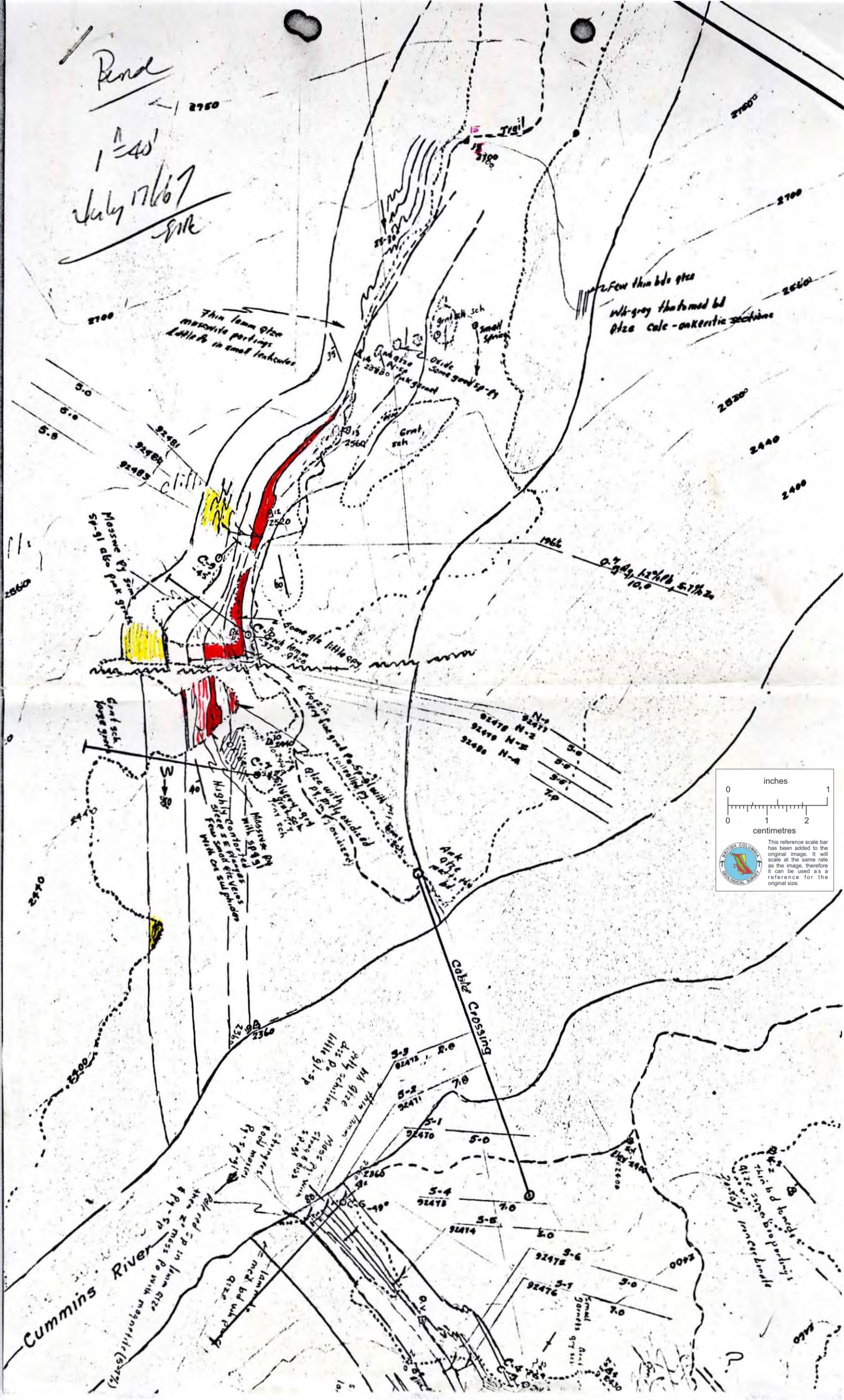
NTS BE D.

SCALE: *1 in = 3300' approx* DATE: *Aug/67*

PLATE: _____

Reed

1st 40'
July 17/67
S.M.K.



Thin lam glze
muscovite partings
Little ls in small lenses

2. Few thin bds glze
Wk grey thin bedded bd
glze calc - on Kertic sections

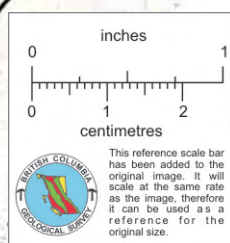
Massive bl. fine grained
sp. ls also part g. sch
Giant sch
long g. sch

Highly contorted
Highly contorted
W. of road
M. ls
M. ls
W. of road
W. of road
W. of road

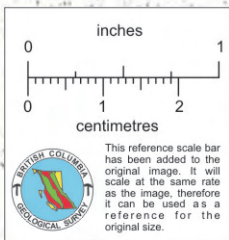
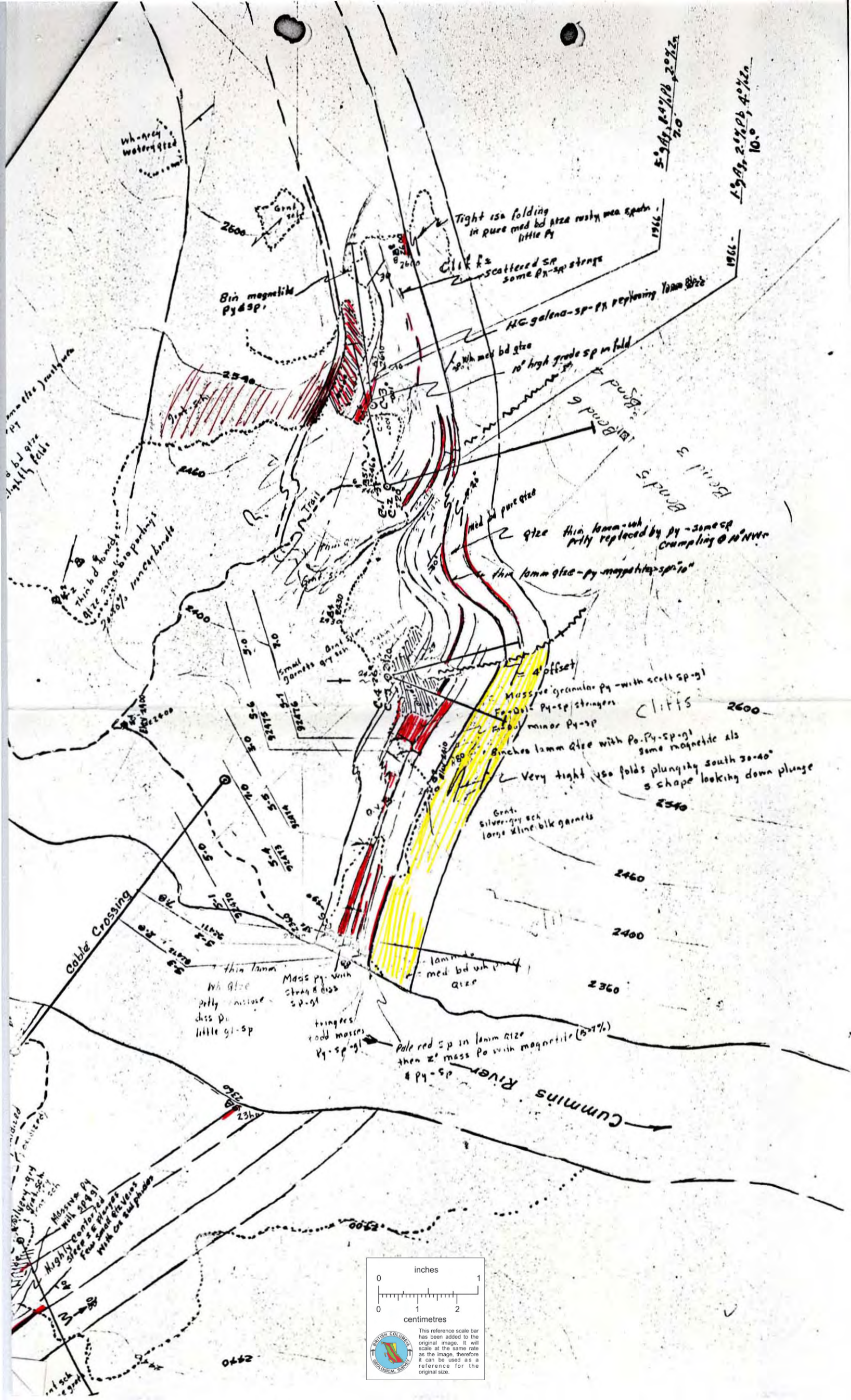
Thin lam
bl glze
d. ls
little gl-sp
M. ls
M. ls
M. ls
M. ls
M. ls

Cummins River
Thin red sp in lam glze
thin ls mass ls with magnetic (57%)
Lam glze
med bd with g. sch

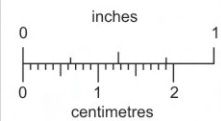
Cable Crossing



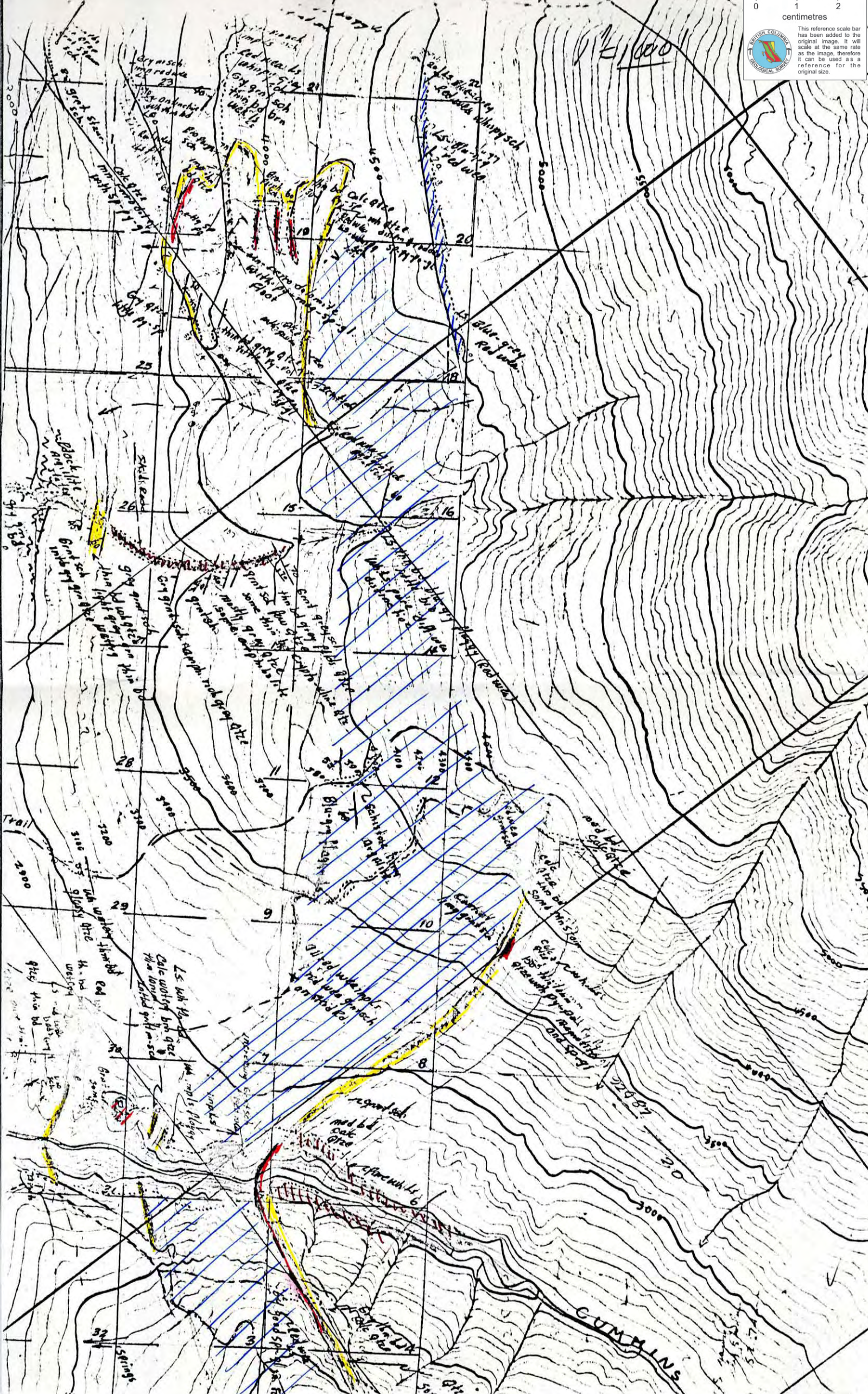
This reference scale bar has been added to the original image. It will scale at the same rate as the image, therefore it can be used as a reference for the original size.



File Box K from ABM - July 16th 1967



BRITISH COLUMBIA
BIOLOGICAL SERVICE
This reference scale bar has been added to the original image. It will scale at the same rate as the image, therefore it can be used as a reference for the original size.



21000

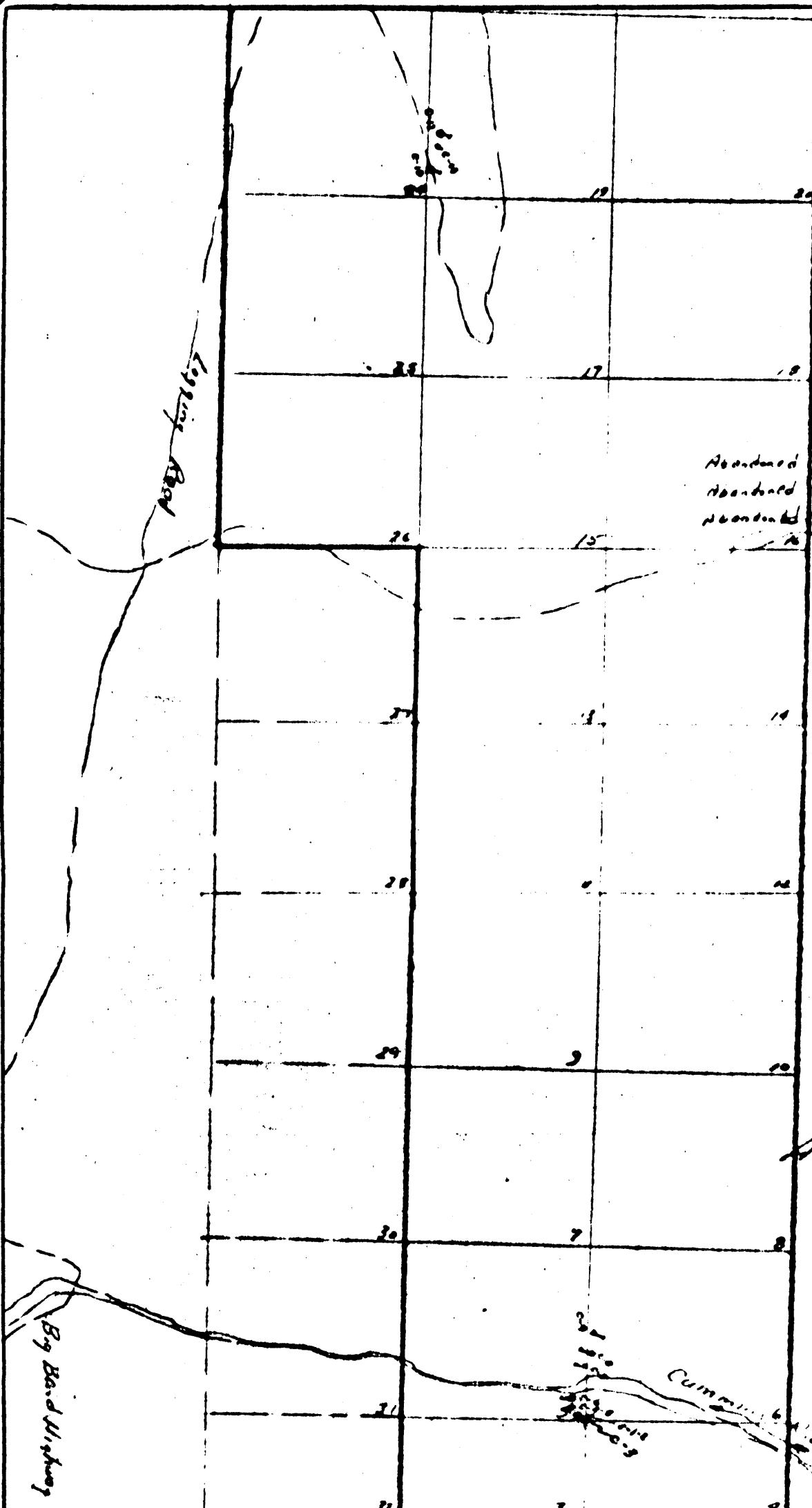
2000

Trail

CUMMINS

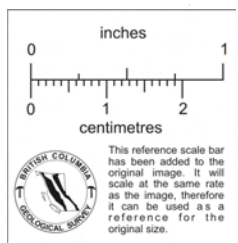
2000

2000



D.D.H.	Length
C-1	72.0
C-2	92.0
C-3	65.0
C-4	58.0
C-5	52.9
C-6	114.0
C-7	95.0
C-8	30.1
Abandoned C-9	13.0
Abandoned C-10	65.0
Abandoned C-11	5.0
C-12	74.0
C-13	36.0
Total	768.0
	786.0

Bend No. 1 Group



The Consolidated Mining and Smelting Company of Canada Limited

DRAWN BY: <i>ABM</i>		TRACED BY: <i>ABM</i>	
REVISED BY	DATE	REVISED BY	DATE

Bend No. 1 Group
Diamond Drilling

SCALE: *1 inch = 1000 ft* DATE: *Aug 1967* PLATE: