

W.A. No.

NAME EDWARD BURGH

SUBJECT REPORTS

821029-07
PROPERTY FILE

005190

Edinburgh
L. 12867

S of Rykman Ck.

¹
Elizabeth
L. 27,85

N side Scott Ck

Scotia
L 2784

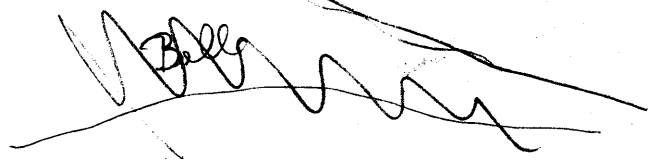
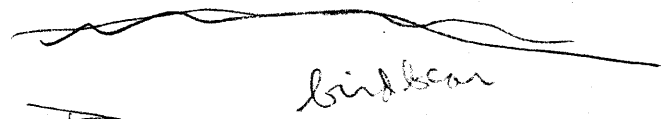
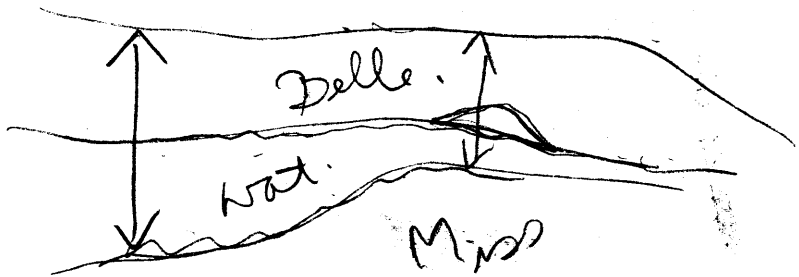
150 Y
Annie
L 1590

~~Scott~~ Ck Granite Ck

Agnes

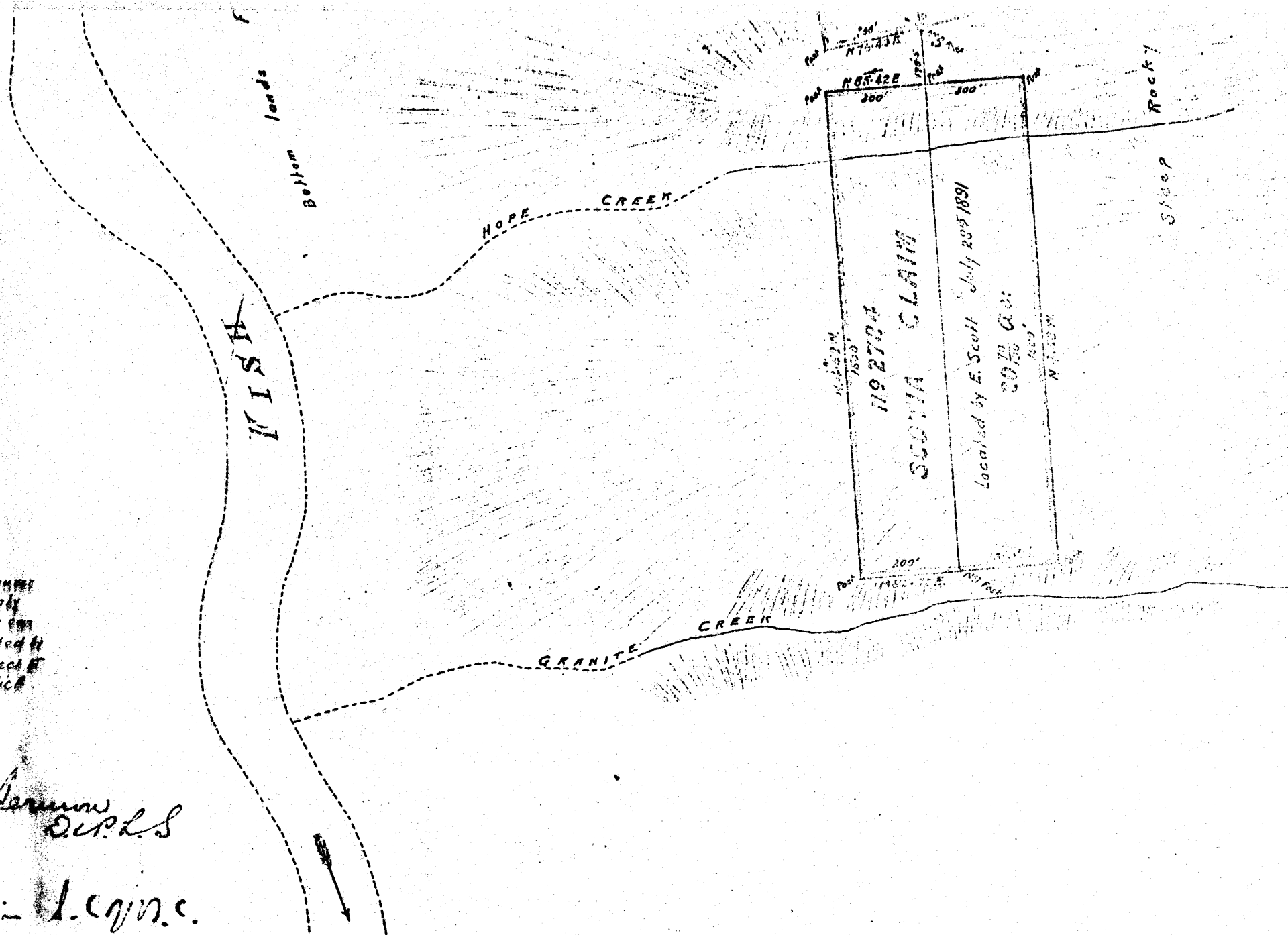
Heronback

Salmon = King Salomon



... of the City of Vancouver
Land Surveyor do solemnly
I have performed, in my own
... the survey represented by
and that the Plan is correct
my knowledge and belief

... B.C. ...
... of ...
Douglas
... in L.C.S. ...
... B.C. ...



RIVER

lands flooded by high water

RYNMAN CREEK

No 2785
ELIZABETH CLAIM

Located by E. Scott Aug 5th 1891

20 ⁷⁰/₁₀₀ ac:

1500'

N 13.07 W.

No 2867
EDINBURGH CLAIM

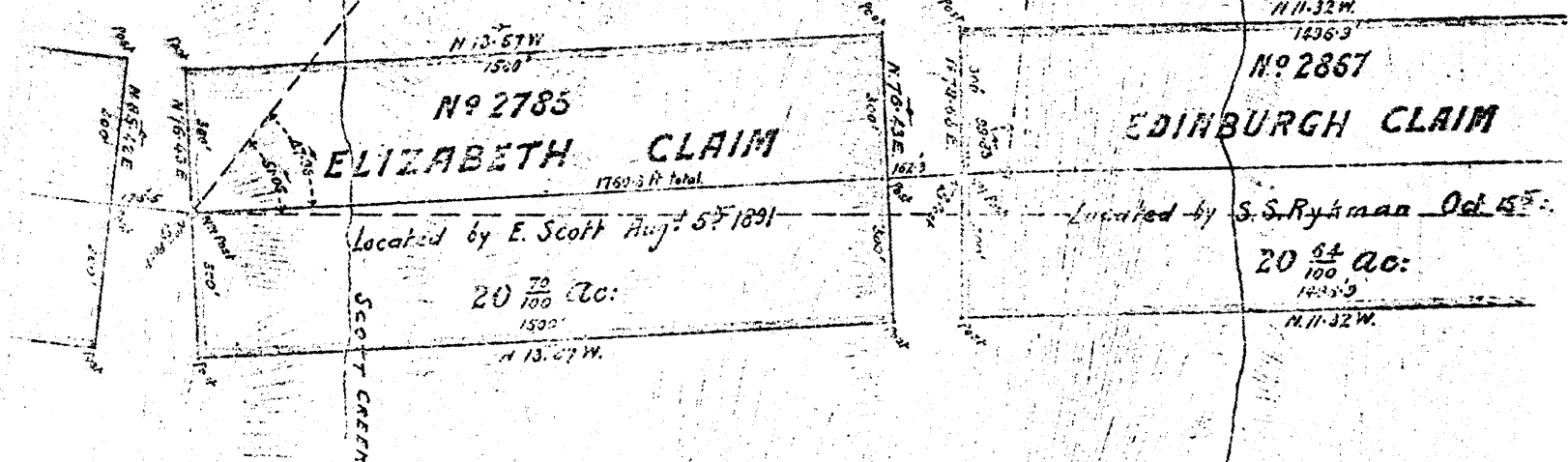
Located by S. S. Rynman Oct 15th

20 ⁶⁴/₁₀₀ ac:

1436'

N 11.32 W.

rocky hillside swept by snow slides



MINERAL CLAIMS

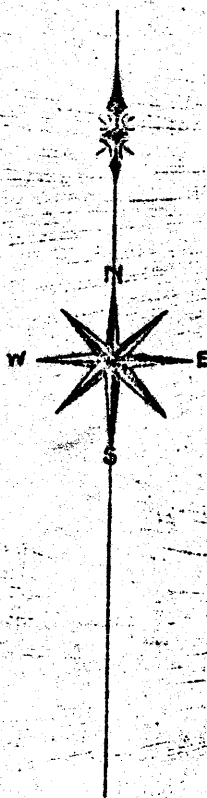
FISH RIVER

WEST DIV. KOOYAY DIST.



In Railway Belt.

SCALE 400 FT. = 1 IN.



*Fish River Monument on S.W. of Mountain
(T.P. 25. No. 26 N. of S.W. 1 M.)*

