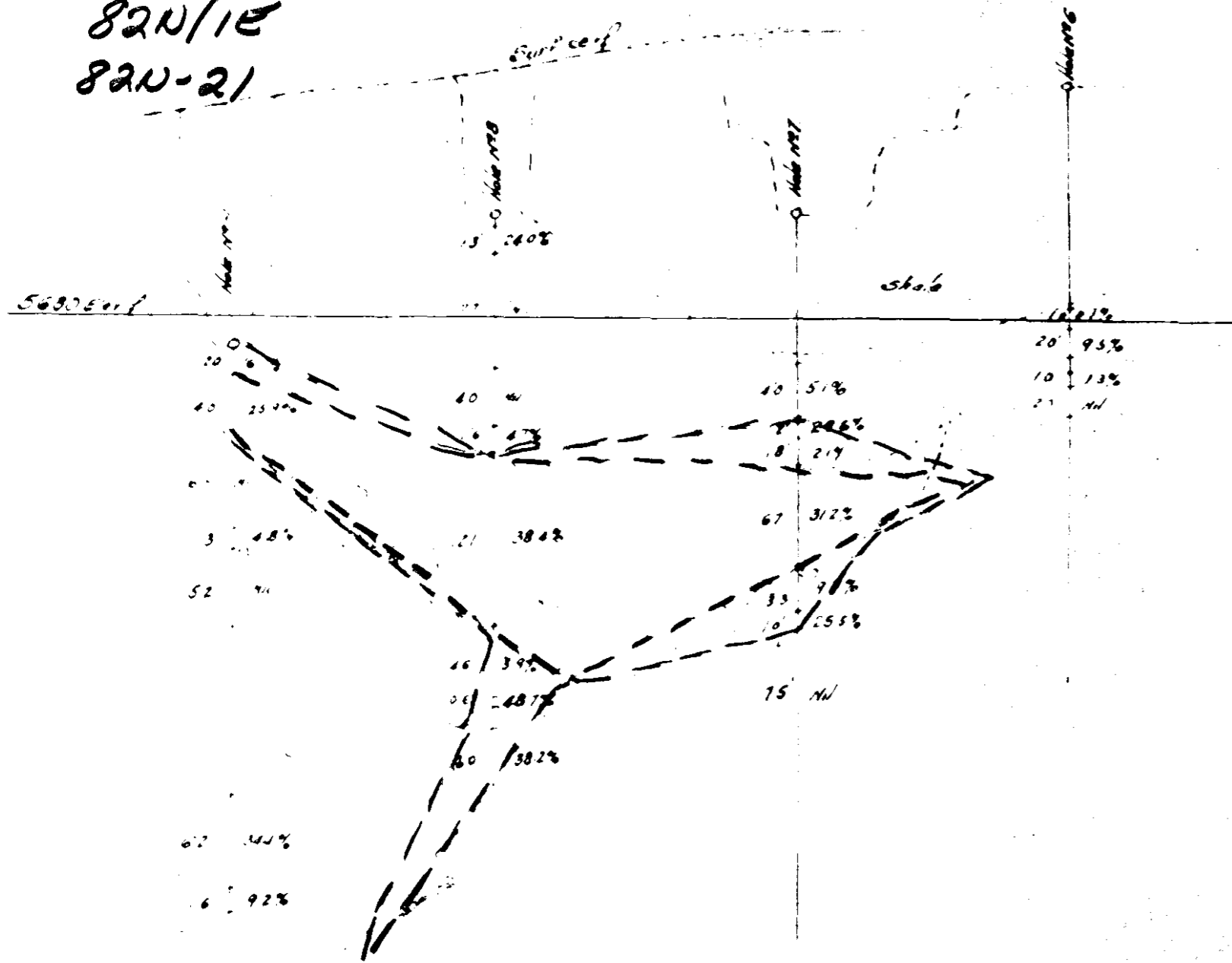


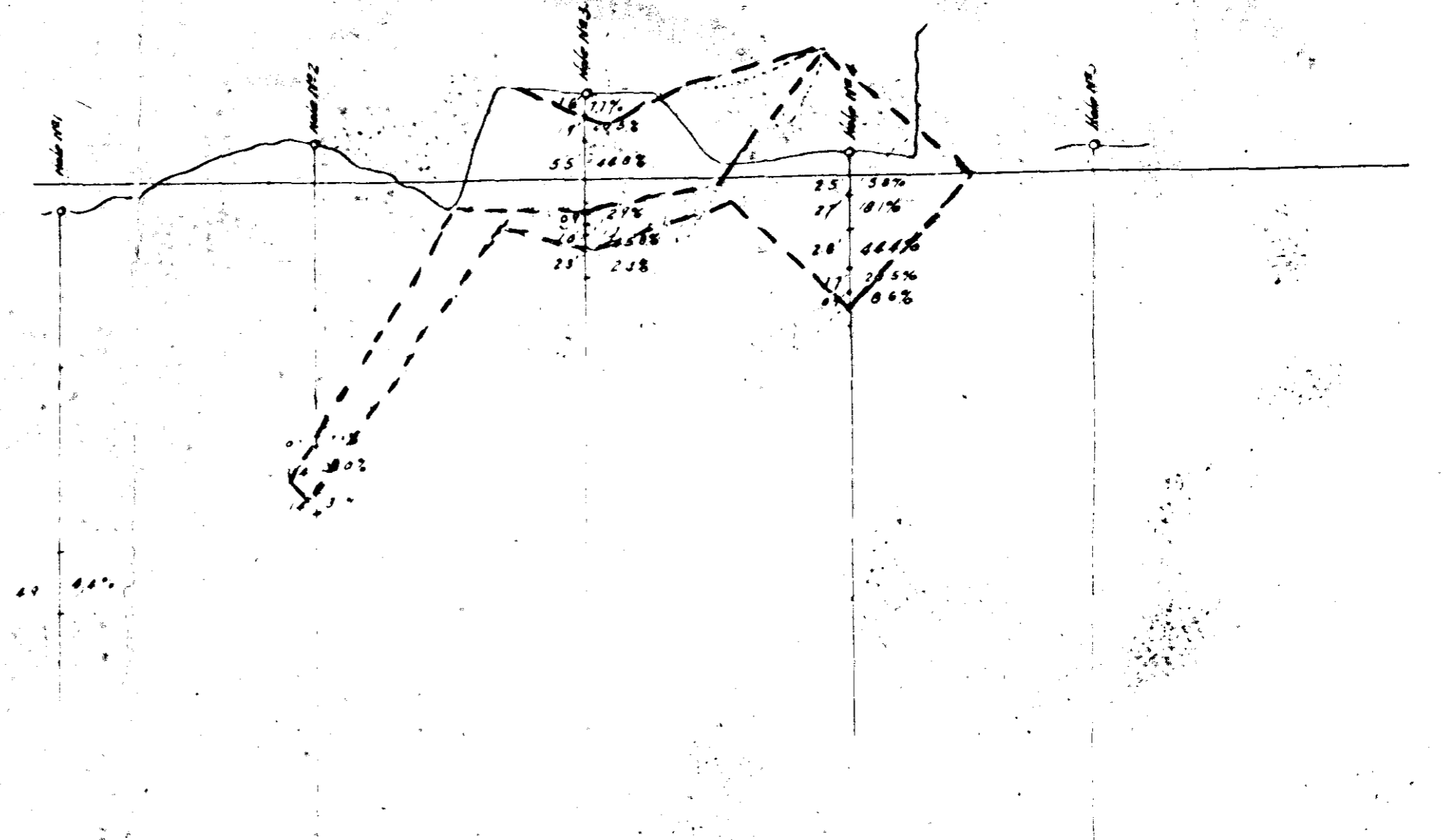
82N/1E
82N-21



RED OUTLINE - SELECTIVE MINING - 527 TONS PER FOOT - 34% Zn
GREEN OUTLINE - MILLING ORE - 620 TONS PER FOOT - 28.5% Zn

TONNAGES BETWEEN SECTIONS 1 AND 2 - 40' LENGTH
SELECTIVE MINING 1196 TONS - 35.3% Zn
MILLING ORE 2138 TONS - 26.6% Zn

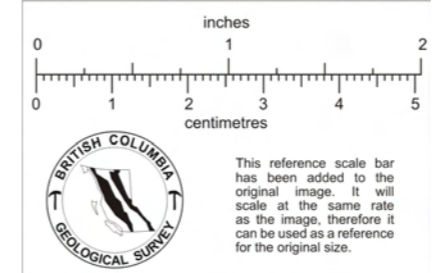
SECTION No. 2.



RED OUTLINE - SELECTIVE MINING - 171 TONS PER FOOT - 38.5% Zn
GREEN OUTLINE - MILLING ORE - 449 TONS PER FOOT - 24.2% Zn

SECTION No. 1.

TO ACCOMPANY REPORT BY DR. W.L. BROWN DATED 14TH AUGUST, 1942.



JULY 1942	BASE METALS MINE FIELD B.G.	SCALE 1" = ...
W.L. BROWN	HAWK CREEK D. DRILL SECTIONS	

005103