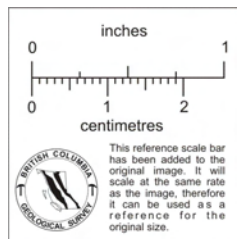
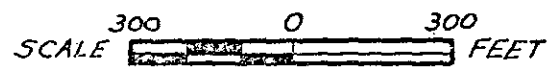
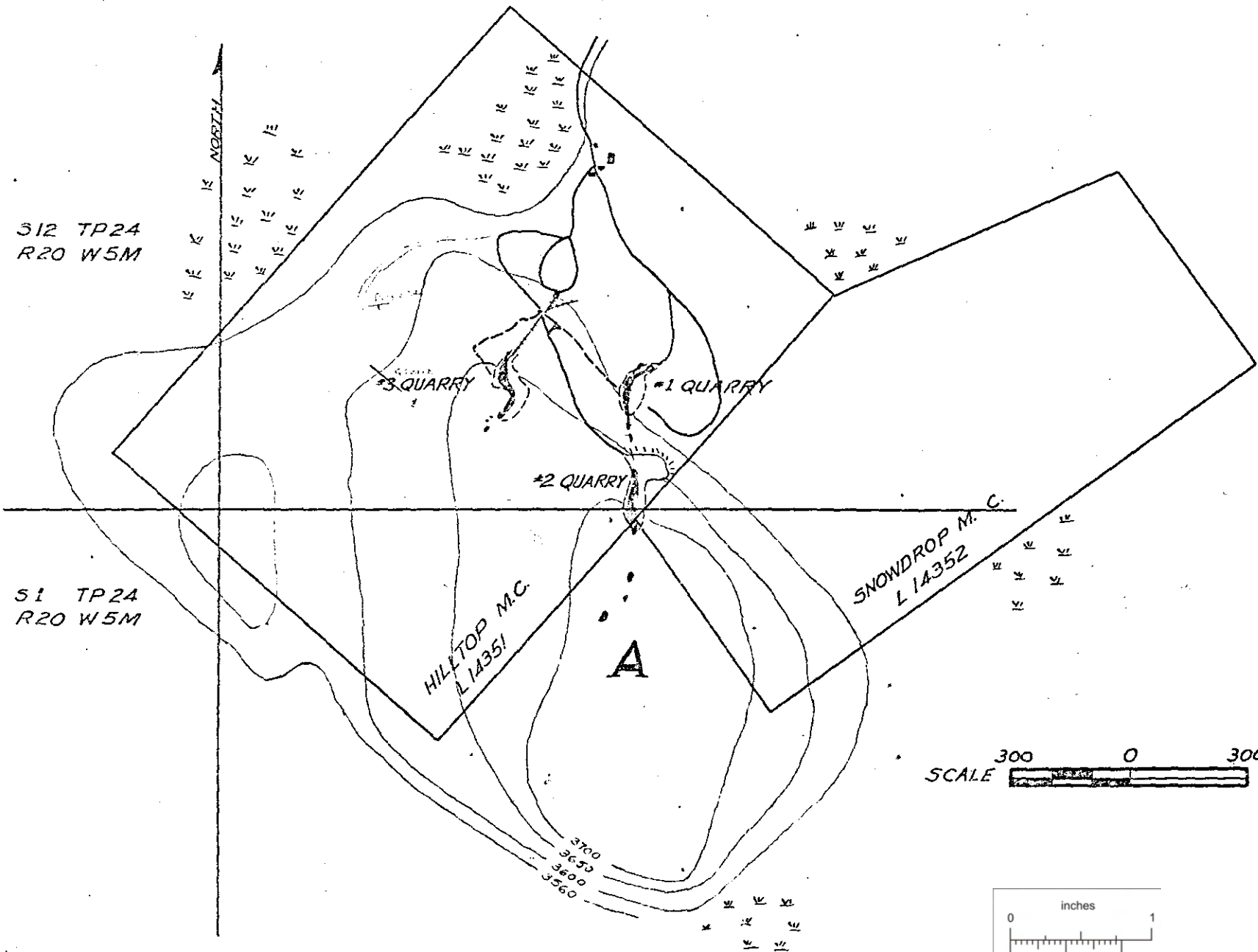


Property File
Parson

Q2 N 002

005098

(23)

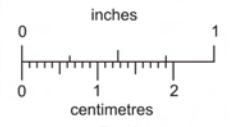
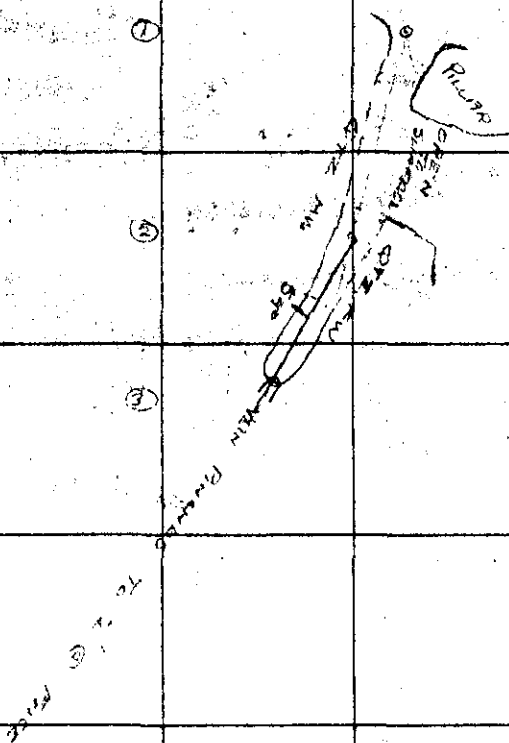


BARITE QUARRIES
PARSON, B.C.

PARSON BARITE

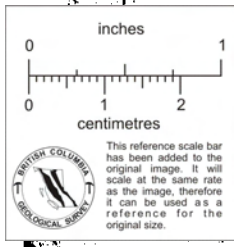
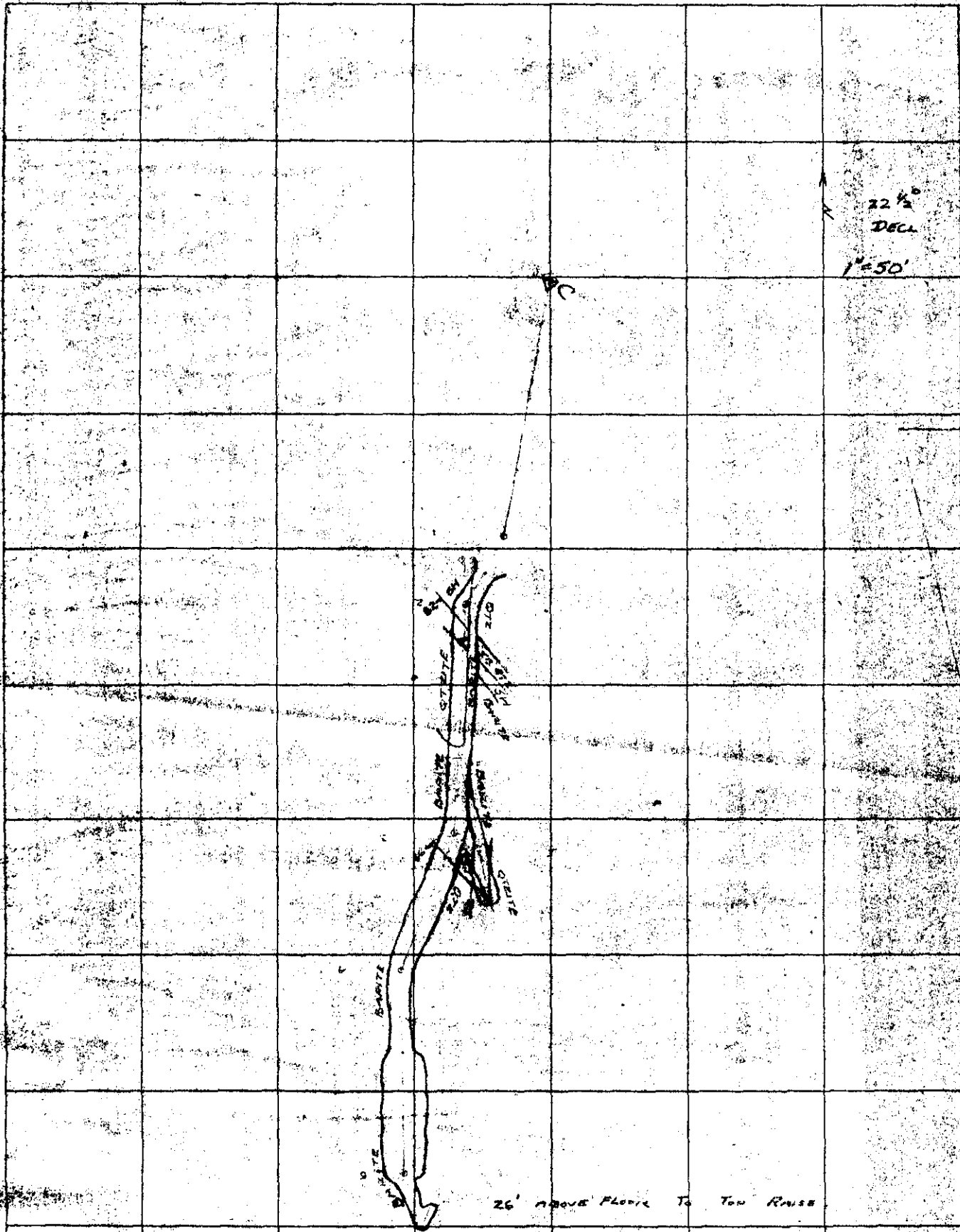
1"=50'

#1 QUARRY



BRITISH COLUMBIA GEOLOGICAL SURVEY

This reference scale bar has been added to the original image. It will scale at the same rate as the image, therefore it can be used as a reference for the original size.

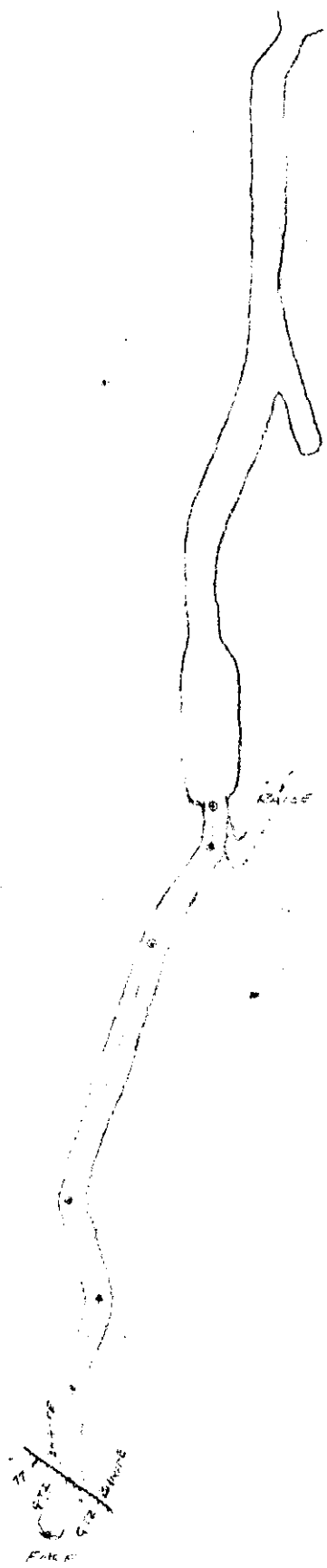


PARSON BARITE

1 AUG 58
J. M. Cameron

22 K
2241.

N

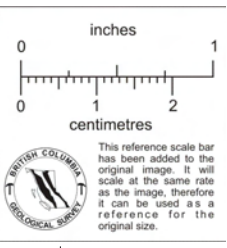


100 500'

1" = 50'

7 July 59

J. W. Cannon



Oct 1950

- 3 -

Ba

(23)

PARSON BARITE MINE (Mountain Minerals Ltd)

Canadian Mine Service continue to contract this operation. The mine is working on three shifts and produces 300 TPD Barite ore plus 160TPD waste. The bunkhouse cookhouse complex has been removed and all employees now live in their own accommodations in nearby settlements.

MOBERLEY SILICA MINE (Mountain Minerals Ltd)

Except for Geological Exploration no work has been done at the quarry on Moberley Mountain. The Plant, below Donald Station is nearing completion and appears to be well engineered.

HUNT SILICA(Horse Creek)

The crushing and washing plant was operating during my visit. Some difficulty in getting rail cars to ship the product, has held up production here. CPR work to rule on the Golden run by train crews is the bottleneck.

ROSSLAND MINING SCHOOL.

Messrs Paquette, Underwood and Meldrum, Selkirk Vocational School representatives are proposing to move the Mining School closer to Nelson from Rossland in order to make better use of the Vocation School shops for vehicle repair. It is felt by educators that the mining equipment used in the open pit is antiquated and of little value to the school. There is also a move afoot to start a Logging School in conjunction with the open pit.

We will hear more about this shortly.


GOLD BELT MINE.

The Company have decided to cut back on the Queen Mine development and concentrate on the Gold Belt operations till ore reserves are improved. Discussions with Cominco have been fruitful inasmuch as Gold Belt will be allowed to build a concentrator beside the old H.B. tailings pond provided Government Agencies agree with the proposal. Consultants have been hired to follow up on this idea. Underground, the Company are seeking Ministerial approval for a man hoist in No.2 shaft. Thirteen men are scheduled for Mine Rescue Training during Novemeber.

SILVANA MINE.

A breakdown in the Cone Crusher has halved throughput of the Concentrator for the last two weeks of the month. At the 4000 Level portal plans are being formulated to develop underground storage bins for ore which could feed on to a conveyor belt leading to a haulage truck loading area. This would eliminate outside loading bins which give untold trouble during winter months.

Respectfully submitted,


J.B.C. Lang, P. Eng.,
District Inspector of Mines
and Resident Engineer.

SULLIVAN MINE:

The proposed 600ft Alimac ventilation raise being driven under contract by Harrison Contractors of North Bay has run into some difficulty. Firstly, the half-moon platform would not operate properly, and the machine was reverted to a standard unit. Secondly, when the face reached about 300ft. a low oxygen condition occurred and still remains at a point about 65ft below the face. Forced ventilation corrects this, but when the ventilation is turned off the condition recurs. The area was examined by trained personnel in Aerolox equipment, there are no faults, slips, drill holes or other discontinuities evident in the raise. Raise advance was stopped and it is being continually ventilated. An 8" bore hole is being driven from surface to meet this raise. Ventilation will be forced through this borehole on completion.

In the meantime a second, 10ft diameter 1000ft long boring contract has been let to Redpath Contractors of Ontario. When details of this incast raise are known they will be sent to Victoria.

The structural engineering report on the Concentrator building has been completed and is being scrutinized in Trail prior to being forwarded to the Ministry.

MINERAL KING MINE (Toby Creek - Mountain Minerals)

The operation has been shut down for equipment maintenance and winter 'moth-balling'.

WESTROC QUARRY (Invermere)

A start has been made on the preliminary work at the Elkhorn Quarry. The haul road is nearly completed and Forest Service have let a contract to log off the area. In No.2 Quarry, conveyor belts are being lengthened in preparation for moving the crusher. A serious accident occurred on October 29 which has been reported separately.

BAYMAG MINE (Mitchell Creek)

A Stage I report has been submitted to Government for approval. In the meantime Forest Service have let logging contracts which cover the proposed mining and plant areas. Reclamation of the original road has been completed and an interceptor ditch has been built above the ore zone.

GIANT MASCOT MINE (Spillamachine)

Run by Baroid of Canada Ltd. the property is being prepared for winter shut down. Old mine tailings are being stockpiled in the plant yard for 1981 operations.

W. Wilson
R. Rutherford
Geology - for your file
M.A. → D. H.

Ministry of Energy, Mines and Petroleum Resources
MEMORANDUM

To: Mr A.J. Richardson, P.Eng.
Deputy Chief Inspector of Mines
Victoria.

Date: August 31, 1982
Our File:

Monthly Report, August 1982. Inspection and Engineering Branch, Nelson.
Milton A. Mellor, C.E.T. Inspector Technician.

Highlights of the Branch in District No.5

The Sullivan Mine and Concentrator operations are back to full and normal production after the five week shut down period.

The Silvana Mine has commenced raising the level of their coarse tailings pond and divider dyke, an additional 10 feet. The downstream construction method is being used to raise the divider dyke, using gravel and overburden. This is 25% complete. The coarse tailings pond using the upstream construction method (on the Carpenter Creek side) with coarse tailings covered by hydraulic fill (washed overburden from the old "Wonderful" property) is almost completed.

Some work has been done to prepare the Ruth Vermont property for extended closure, with explosives removed and adits sealed. A Watchman is still on the property as per our requirements. Removal of cyanide from the property has still not been resolved.

Mountain Minerals Parson Barite Mine plans to re-open September 10th with an initial production schedule of 2000 tons per month, using a 5 man Canadian Mine Services crew. The Company's stock piles at Lethbridge have nearly been depleted. At least a year's production is scheduled and hopefully will be increased.

Approval for the proposed Sepp Wenger Sand and Gravel operation, located east of highway 95 at Windermere, on agricultural land appears to be coming finalized. The original proposal, after receiving Cabinet approval last year, raised a storm of controversy with charges of political patronage, and was denied under the Soil Conservation Act. A public hearing at Windermere on August 24th regarding the new scaled down proposal reportedly went smoothly.

David Minerals construction on the Cyanide Plant is progressing on schedule, with completion hoped to be mid October.

Strike August 9, 10, 11, and 12th until 10.00.a.m. Gib McArthur supervised the office for this period.

J.B.C. Lang was on scheduled vacation for the month of August.

M.A. Mellor
M.A. Mellor, C.E.T.
Inspector Technician.

MAM/elg
Encl.