


EXPLANATION

Carnes Creek Area, Revelstoke, B.C.

Stairs Exploration 1964.

- strike and dip of lineation in outcrop.
- fold plunge in outcrop
-  faulting (strike and dip)
- rock contacts defined, or reasonably well assured
- ..... rock contacts inferred.
- /qv quartz vein
- O.B. overburden
- ≡ adit
- approximate claim boundaries.
- ① rock type as illustrated on legend.

This is to accompany the geological maps Nos 1 to 9 with the geological report by J. Sullivan, P. Eng., on the Carnes Creek area 2.5 miles north of Revelstoke, May 15 to Sept 15, 1964.

J. Sullivan

LEGEND  
CARNES CREEK AREA, REVELSTOKE, B.C.  
STAIRS EXPLORATION 1964.



GRANITE PORPHYRY.

EASTERN BELT



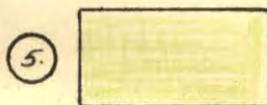
ARGILLACEOUS QUARTZITE  
& SERICITE SCHIST.



BLUE GREY LIMESTONE &  
DOLOMITE.



BLACK GRAPHITIC SCHIST.



GREEN CHLORITE SCHIST.

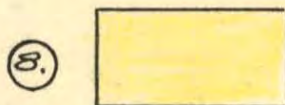


ARGILLACEOUS QUARTZITE,  
SERICITE SCHIST, & LIMESTONE  
\* MIXTURE OF 2 & 3.



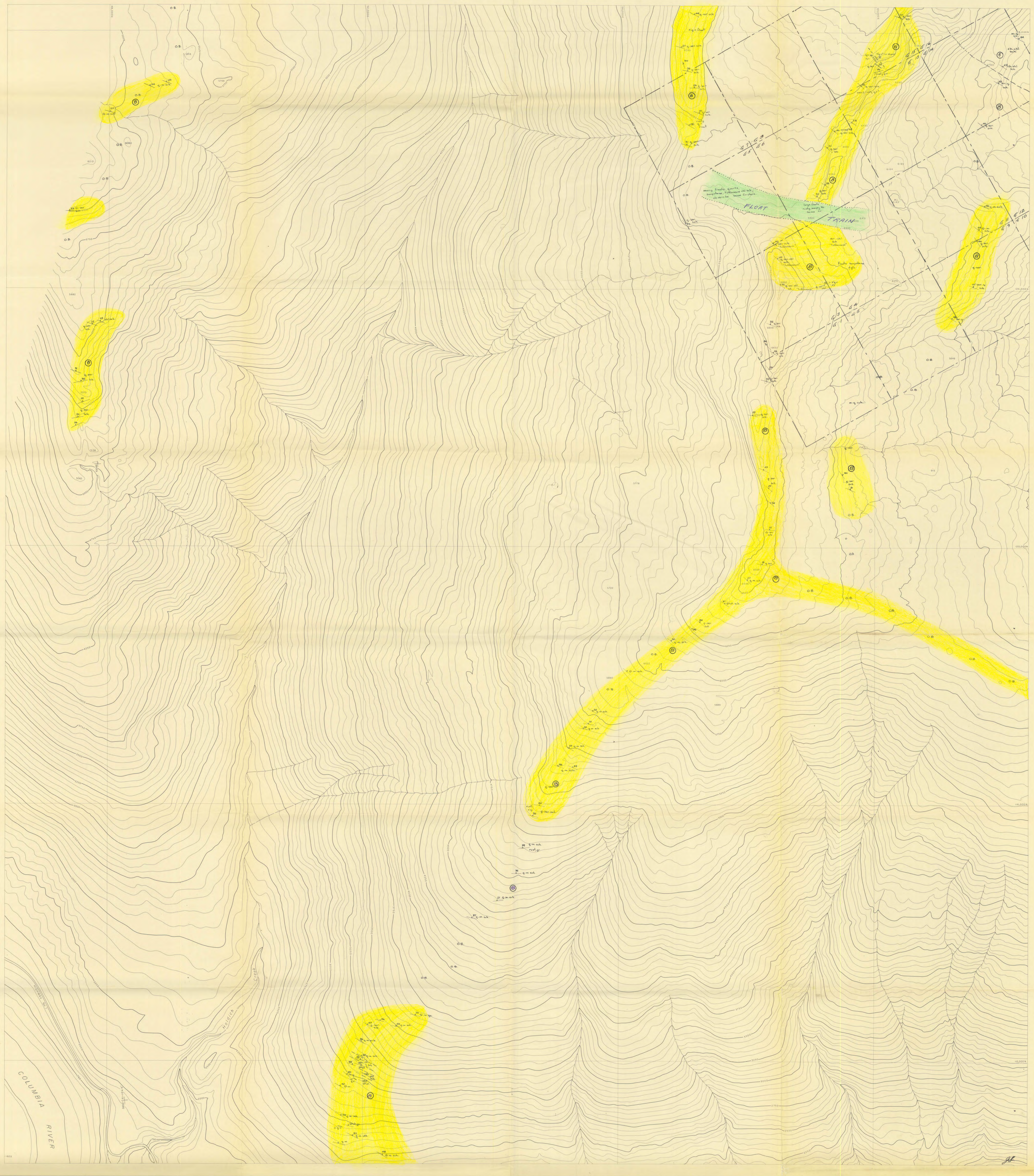
LIMESTONE, GRAPHITIC SCHIST,  
CHLORITE SCHIST.  
\* MIXTURE OF 3, 4, & 5.

WESTERN BELT.



QUARTZ SERICITE SCHIST &  
MINOR QUARTZITE.

*J.L.*

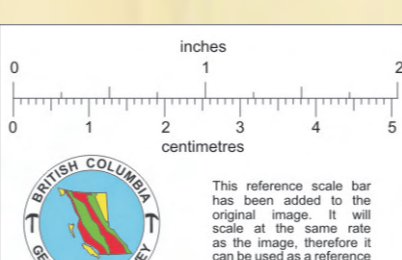


Field Geology By:  
 W. HELEMS  
 A. REID  
 R. REVE  
 R. CHANCE  
 J. SULLIVAN  
 MAY 15 TO OCT 15, 1964.

STAIRS EXPLORATION and MINING Co., LTD.  
**CARNES CREEK AREA**

SCALE: 400 FEET TO 1 INCH  
 CONTOUR INTERVAL: 50 FEET

DATE OF PHOTOGRAPHY JULY 31, 1961  
 DATUM G.S.C.



*To accompany the geological report  
 by J. Sullivan on the Carnes Creek  
 area 25 miles north of Reddick,  
 May 15 to Sept 15, 1964.  
 J. Sullivan*

