

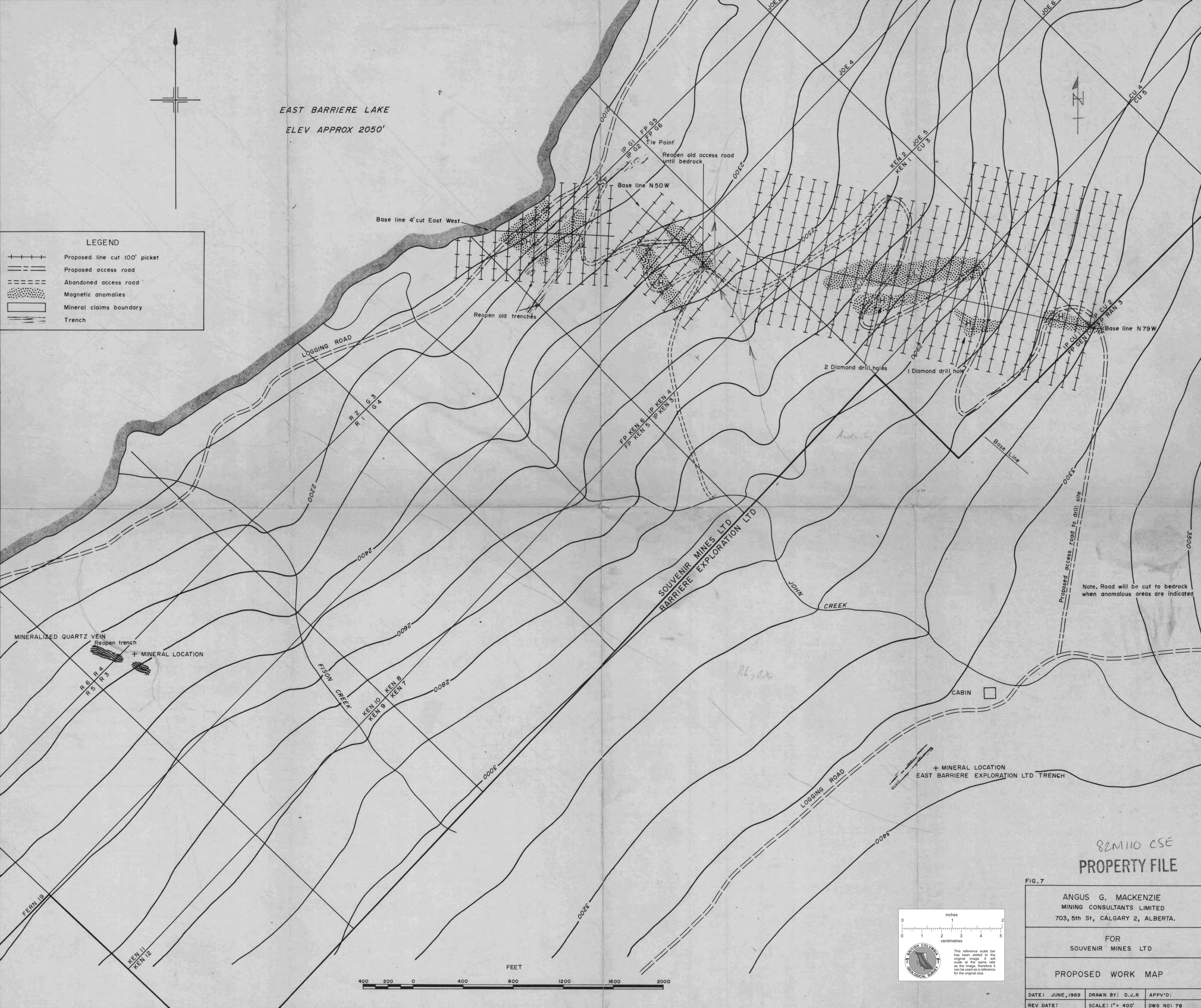


EAST BARRIERE LAKE
ELEV APPROX 2050'



LEGEND

- +++++ Proposed line cut 100' picket
- Proposed access road
- - - Abandoned access road
- Magnetic anomalies
- ▭ Mineral claims boundary
- - - Trench



MINERALIZED QUARTZ VEIN
Reopen trench
+ MINERAL LOCATION

Note: Road will be cut to bedrock when anomalous areas are indicated

+ MINERAL LOCATION
EAST BARRIERE EXPLORATION LTD TRENCH

82M110 CSE
PROPERTY FILE

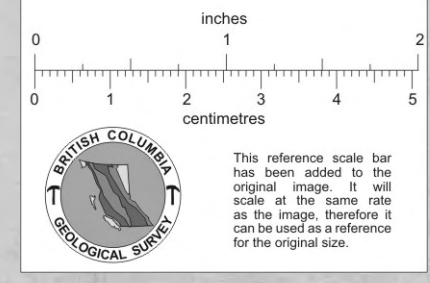
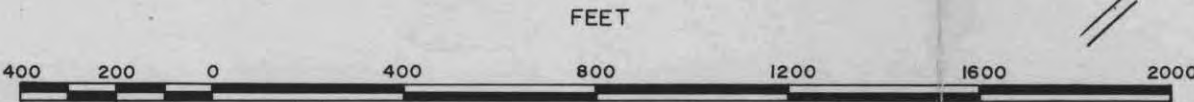


FIG. 7

ANGUS G. MACKENZIE
MINING CONSULTANTS LIMITED
703, 5th St, CALGARY 2, ALBERTA.

FOR
SOUVENIR MINES LTD

PROPOSED WORK MAP

DATE: JUNE, 1969	DRAWN BY: D.J.R	APPV'D:
REV DATE:	SCALE: 1" = 400'	DWG NO: 76

004972