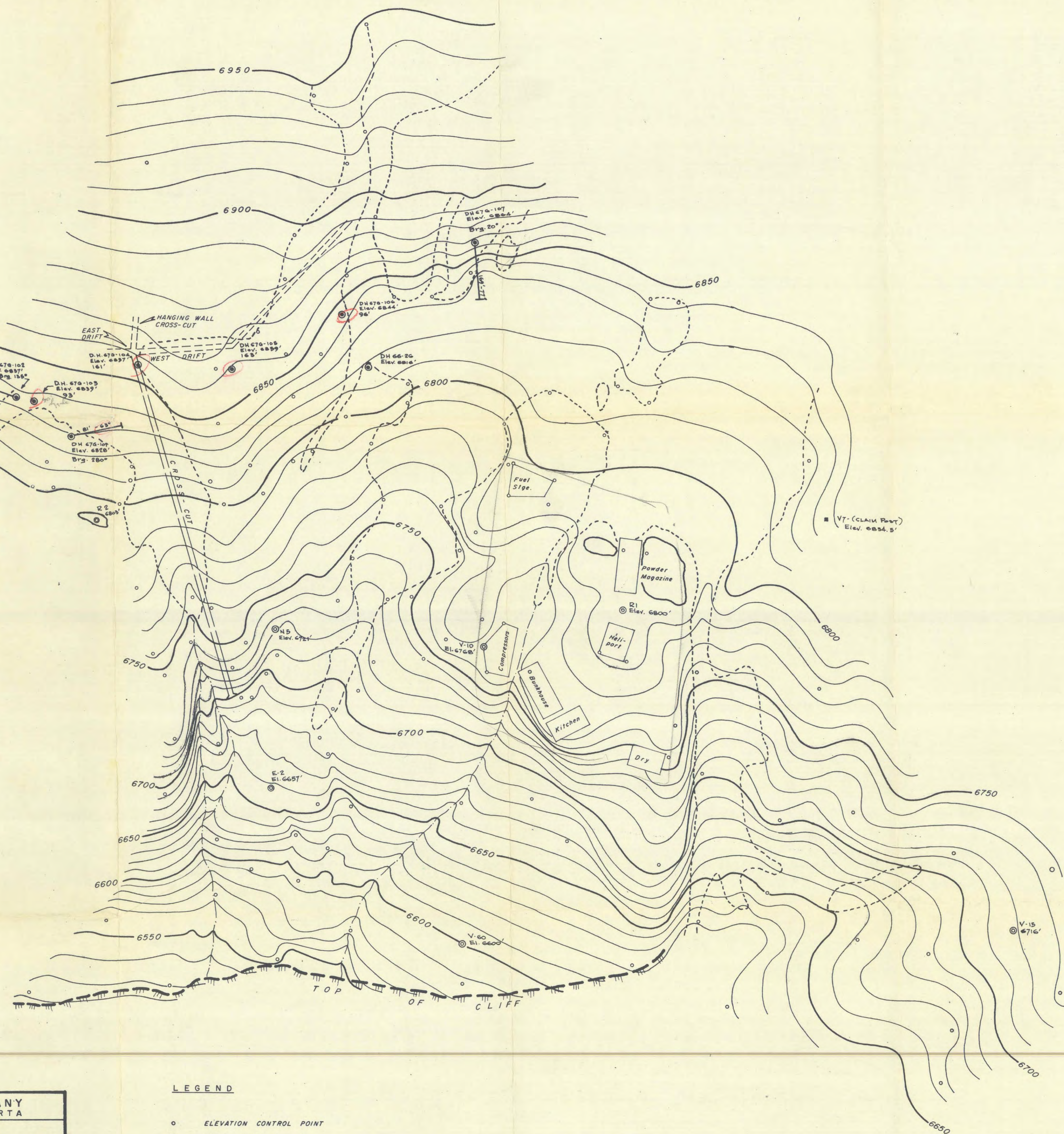


Magnetic North 24° E.
True North

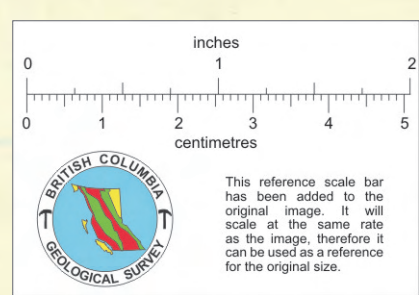


82M/1E
82M-2

KING RESOURCES COMPANY CALGARY ALBERTA	
COPELAND MOUNTAIN MOLYBDENITE PROPERTY GLACIER ZONE AREA	
PROPOSED CROSS-CUT PROPERTY FILE	
GEOLOGY BY	DRAWN BY
	J. K. Barber
DATE	SCALE
Sept. 1967	1" = 40 Ft.

LEGEND

- ELEVATION CONTROL POINT
- ⊙ TRIANGULATION STATION
- ⊙ DRILL HOLE
- CLAIM POST
- ICE AND SNOW FIELD LIMIT



PLANE TABLE SURVEY BY M.C. ROBINSON & L.W. VIGRASS

004722