

W.A. NO.

NAME

MOUNT COPELAND

SUBJECT

CHIPPINGS

82M002-03
PROPERTY FILE

004677

M. Inspect. Rept. Sept. 1975

D. Smith

82M/1W

MOUNT COPELAND MINE--Revelstoke

-#2.

Interest only.

The finalization of the reclamation program laid out by J. McDonald for this underground mine is nearly completed. There is very little left to do at the site that can be done and despite the altitude, 6000 plus, mother nature is already taking over and soon not much except the cement foundations and roads will be in existence to indicate where a thriving mine existed. A final inspection will be made upon completion of the work contemplated by the company.

82M002.

King Resources opens Canada's newest molybdenum producer

Plan 15,000-ton concentrator at Similkameen

REVELSTOKE, B.C. (Staff) — An electrical switch was thrown at noon on Saturday by John M. King, chairman, King Resources, putting into motion the crushing equipment and thereby formally marking the opening of Canada's newest molybdenum producer, some 18 miles northwest of Revelstoke, B.C.

The new 200-ton-per-day milling plant, comprised entirely of brand-new equipment, claims the distinction of being located at the highest altitude of any Canadian mining operation — about 6,000 ft. above sea level.

Known as the Mount Copeland Mine, the mine and mill plants must be 'seen to be believed,' as they are located in a particularly steep mountainous area, reached through regions of snowfields and avalanches by a tortuous access road which climbs from about 1,450 ft. at Revelstoke to the adit site at 6,150 ft., with most of the climb contained within the last nine miles of route.

At least three years' mill feed is estimated in reserves, which stand at 180,000 tons grading 1.82% molyb-

denite (MoS₂), calculated by the company's consultants.

Representing the British Columbia government, K. B. Blakey, deputy minister of Mines and Petroleum Resources, congratulated King Resources on the remarkably short time it required to bring the operation into production. From initial development to production of molybdenum concentrates required less than three years, he remarked. He also gave credit to Versatile Mining Services of Kamloops, B.C., which conducted the initial program of underground development and turned over the operation to KRC Operators Ltd., King Resources wholly-owned subsidiary, on Jan. 1.

Mr. Blakey commented that although he didn't have figures available

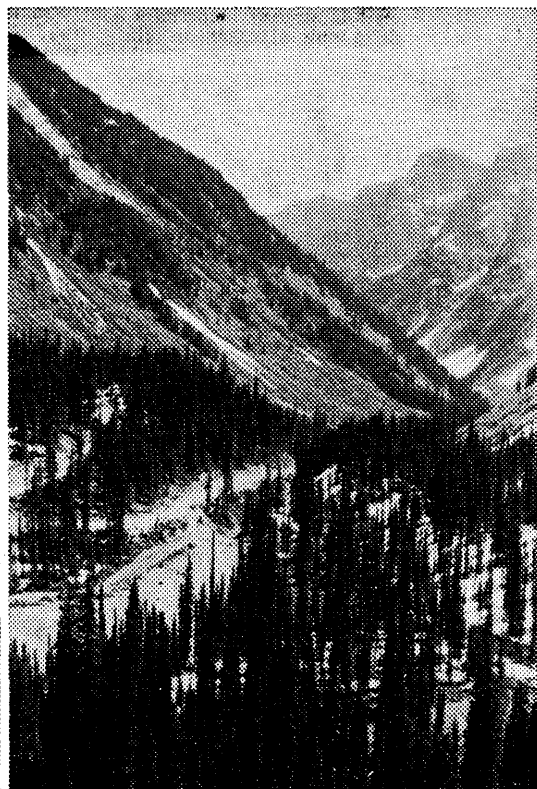
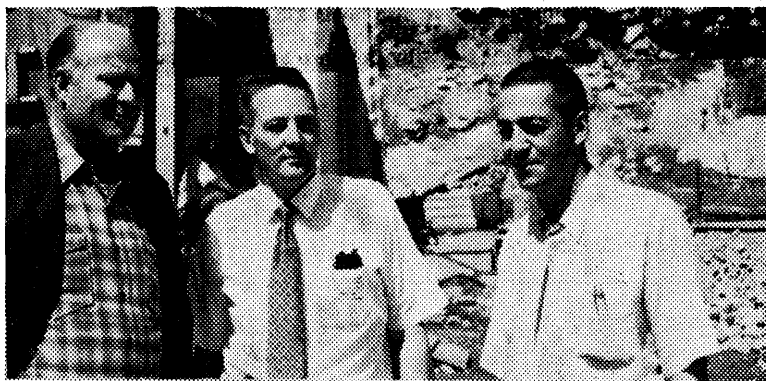
See KING RESOURCES, Page 2

VANCOUVER—Another major copper concentrating project is in sight for British Columbia.

Similkameen Mining Co., a wholly-owned subsidiary of Newmont Mining Corp., announced this week that it has notified the government of British Columbia of its intention to put into production its mining properties near Princeton, B.C.

Plans call for construction of a concentrating plant with a daily capacity of 15,000 tons. Officials state that financing of the project has not yet been completed. Similarly, they could not give a firm estimate of the date such a plant would be completed, pending final financing arrangements. Overall cost

See SIMILKAMEEN, Page 5



Photos by The Northern Miner

NEW MOLYBDENUM PRODUCER: Upper left — John M. King, chairman, King Resources, left, with K. G. Collins, centre, project manager, and B. T. Gallant, director of mining exploration, at the opening of the 200-ton mill at King Resources' Mount Copeland mine, 18 miles northwest of Revelstoke, B.C. Bottom left — Absence of level areas necessitated hanging ends of office and bunkhouse prefabricated buildings over edge of steep slope. Front ends are securely anchored to bedrock, while rock-filled timber cribs protect the up slope end from possible snow slides. Right — Typical terrain, looking from the mine and mill site to tailings pond at lower centre, several hundred feet below.