

## HAT BARITE - INVERMERE

MEIP Contract #14

A concentrated effort was made during the past summer to explore and determine the potential of the Hat Barite mineral claims.

Our work consisted mainly of stripping the vein in an effort to determine the length, strike and dip; cross-cutting on strike at 5 locations with the use of bulldozer. Trenching by backhoe along the strike was attempted and a number of test holes were dug within the cross-cuts and other locations in an effort to intercept the vein both above and below the main showing.

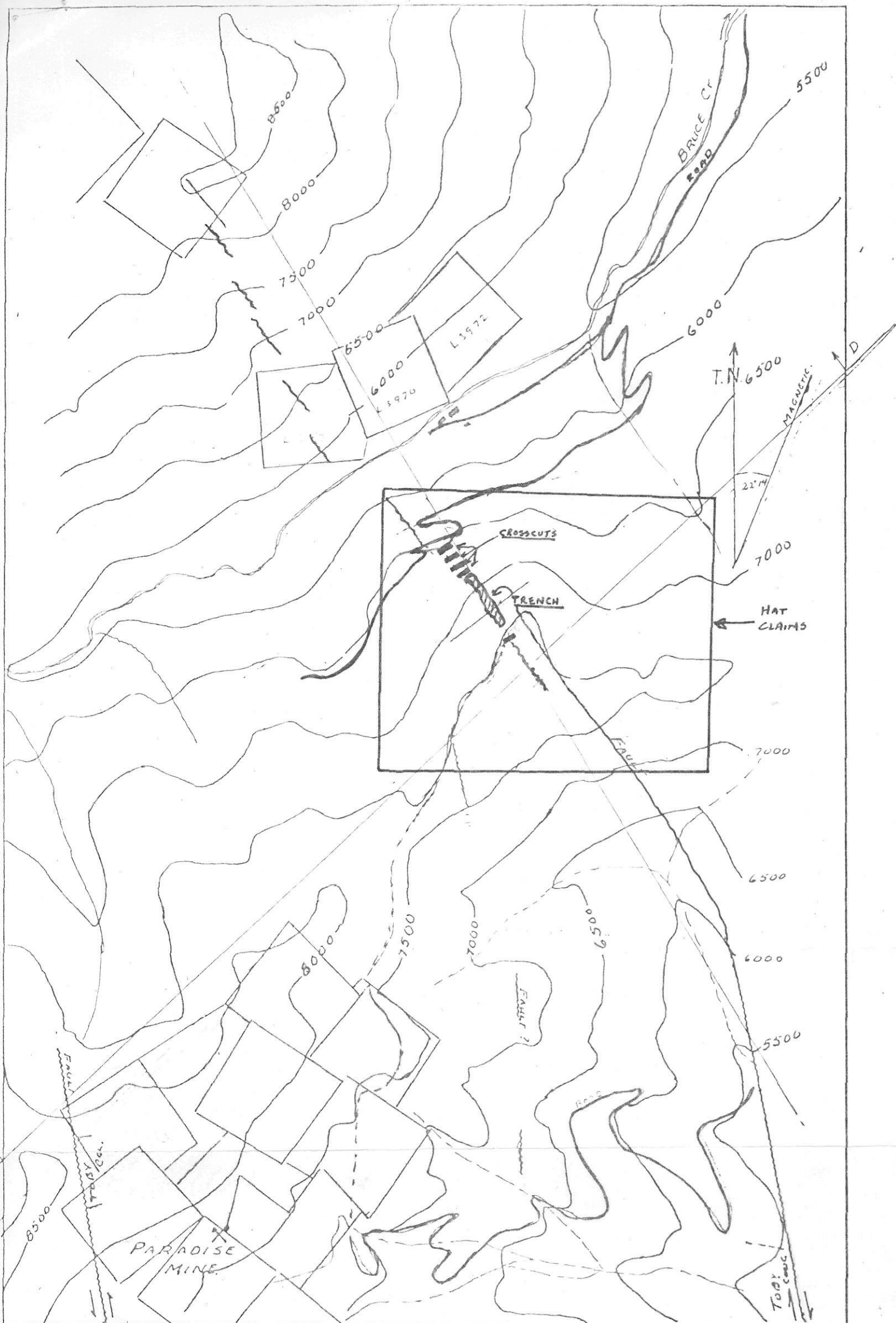
As a result of our work, the vein was exposed over a distance of 150 feet by an average of 15' in depth. <sup>WIDTH 8'</sup> What appears to be an extension of the vein was intercepted at a location approximately 120' from the lower end of the main showing. The point of interception strongly indicated an extension of the main showing with relatively pure barite being visible with a depth of 12' and a length of 14'. We were unable to determine width at the intercepted point.

Assay results indicate a good quality of barite with specific gravity in excess of 4.24. Small veins of tetrahedrite and showings of chalcopryrite are evident.

Our calculations indicate 6400 tons of relatively pure barite in place. Unfortunately, we were unable to get a drill onto the property. We have determined that during the forthcoming season, we will bulk sample the showing.

WE thank the Government and the ministry of your assistance.

Juan R. Muro



|                               |      |            |      |
|-------------------------------|------|------------|------|
| Drawn by:<br><b>R. Miller</b> |      | Traced by: |      |
| Revised by                    | Date | Revised by | Date |
|                               |      |            |      |
|                               |      |            |      |

**THE HAT BARITE**

Scale: 1" = 1666.6'

Date: **FEB. 12/19.**

Plate: **1**

500 + 1 MILE.

## HAT BARITE - INVERMERE, B.C.,

Analysis

|                                |          |
|--------------------------------|----------|
| Specific Gravity @ 20°C (68°F) | 4.32     |
| Hardness (ppm Calcium)         | 2.0      |
| Loss on Ignition @ 800°C       | 0.49%    |
| SiO <sub>2</sub>               | 4.66%    |
| Barium Sulphate                | 94.62%   |
| Iron                           | 0.05%    |
| Calcium                        | <0.01%   |
| Magnesium                      | <0.01%   |
| Zinc                           | 3.1 ppm  |
| Lead                           | 9.0 ppm  |
| Copper                         | 33 ppm   |
| Chromium                       | 2.4 ppm  |
| Cadmium                        | <0.1 ppm |
| Mercury                        | 154 ppb  |