

SHEEP CREEK GOLD MINES LIMITED

PARADISE 082K5E029

COPY

Invermere, B.C.  
Feb. 14th 1952

ion Bureau of Statistics,  
a, Canada.

Sirs:

Herewith Lode Mines Report of Operations  
the year 1951.

*Paradise*

Yours truly,

SHEEP CREEK GOLD MINES LIMITED

*J.R. Thompson*

passed on to the reader as the universe  
and observations of a Nelson housewife  
and community worker.)

Dear Jane:

I sort of had my eyes opened the other  
day. Don't suppose they will stay that way for  
very long, but while they do I'm going to  
try to make good use of my time. We hear  
so often about old people living in the past  
and smile rather condescendingly. But it has  
just occurred to me that the younger ones  
live in the future and which is more foolish?  
There always seems to be some future happy  
time for most of us . . . "When Junior learns  
to walk" . . . "When we get enough money  
saved up . . ." "When we get our car . . ."  
Makes me wonder who is having fun today.

All this reminded me of a story of "A Day"

AINSWERKS  
Victoria

Open to any reader. Names of persons  
asking questions will not be published.  
There is no charge for this service.  
QUESTIONS WILL NOT BE ANSWERED  
BY MAIL except where there is obvious  
necessity for privacy.

J. M. Wymndel—Could you give me the ad-  
dress in B. C. of a wholesale agency for  
confectionery supplies?  
The T. Eaton Company, Export Depart-  
ment, Vancouver; Jepsensen Chocolate Co.,  
Ltd., Vancouver; Mainland Confectionery Co.,  
Ltd., Vancouver; National Biscuit and Confec-  
tionery Co., Vancouver; Purdy Chocolates,  
Ltd., Vancouver; Sinclair Bros. Vancouver.

Notebook

by R.G. JOY  
Historian Nelson District Oldtimers  
Association

(Editor's note: This continues  
the story of Mr. Joy's period in  
the Kootenays. It covers activi-  
ties from the early '90s to the  
present.)  
Nakusp was a wide open town at  
the advent of the depression of  
1893, which was keenly felt in the  
Kootenays. Wages were low, and  
even then men would work for a  
period of 10 or 12 months, then come

RECEIVED

FEB 16 1952

BUREAU OF ECONOMICS  
AND STATISTICS

004182

COPY

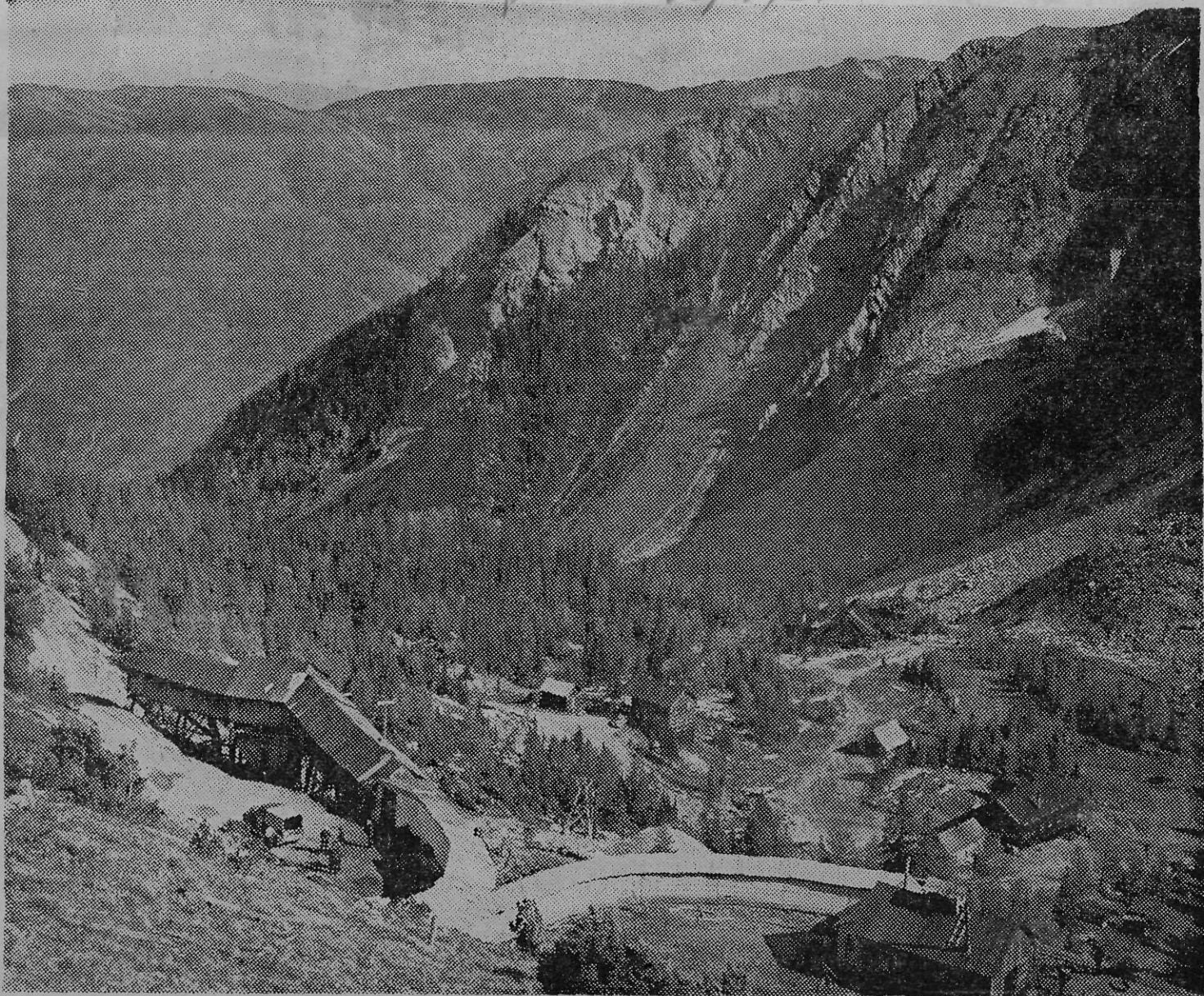
SHEEP CREEK GOLD MINES LIMITED

PARADISE

08KSE029

Invermere, B.C.  
Feb. 14th 1952

Nelson Daily News 15/11/52



MOUNTAIN-TOP MINE is Sheep Creek Gold Mines' Paradise property 7800 feet high in the scenic Purcell Range near Invermere. This panoramic view of the silver-lead-zinc property shows the

portal and mine buildings. Last year 102 cars of concentrates poured out of the Paradise, and this year operations have been even more successful.—J. M. Cummings photo.