

Reduce to 1" = 50'
for page-size drawing
to be read upright

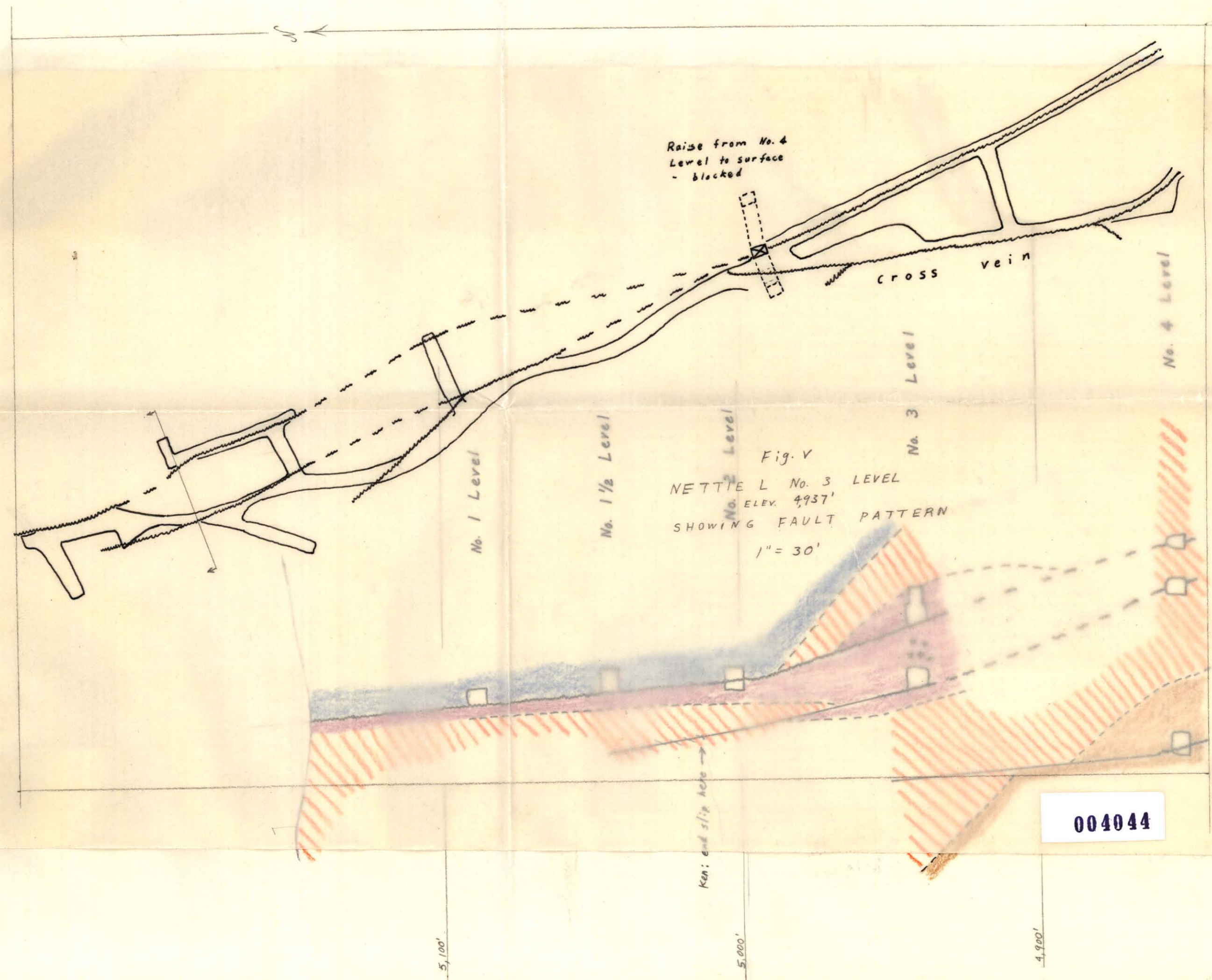
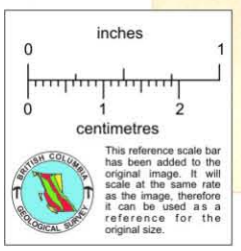


Fig. V
NETTIE L. No. 3 LEVEL
ELEV. 4937'
SHOWING FAULT PATTERN
1" = 30'

Fig. C
CROSS-SECTION THROUGH NORTH END
NETTIE L. MINE
1" = 30'

Lode material
slip

004044



5,100'

5,000'

4,900'