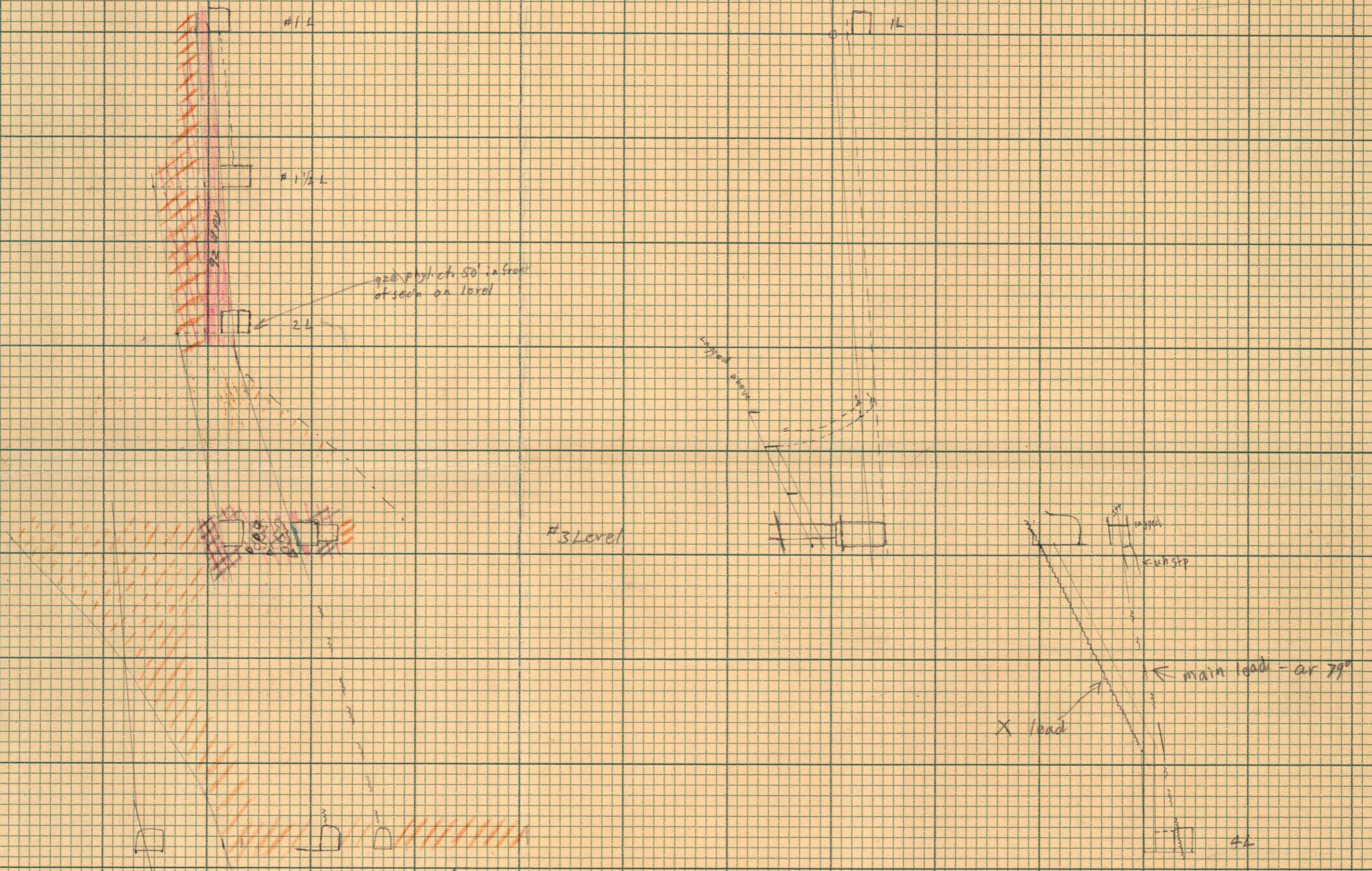
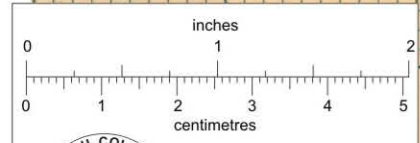


5085'  
5055'  
5025'  
4995'  
4965'  
4935'  
4905'  
4875'  
4845'



Section 120' NW of a.F. r.s.c.

plunge of intersection of top of this gze with fault is at least  $\arctan \frac{150}{300}$  or 26.3°



This reference scale bar has been added to the original image. It will scale at the same rate as the image, therefore it can be used as a reference for the original size.

004042