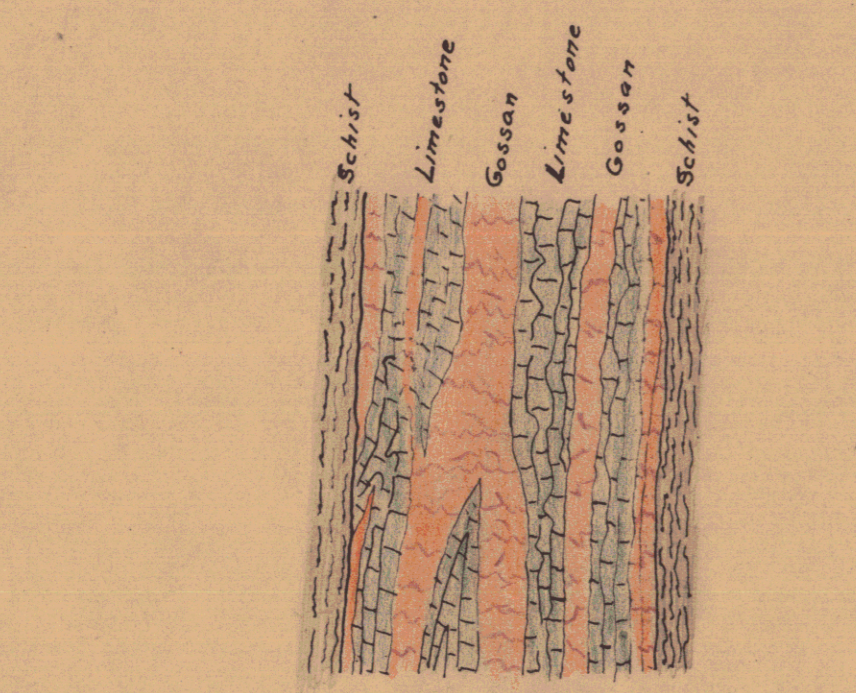


DETAIL OF CUTS AT 4800 ELEV.  
1 INCH = 20 FEET.



TYPICAL GOSSAN OUTCROP



DETAIL OF HIDDEN TREASURE WORKINGS  
1 INCH = 100 FEET.

DETAIL OF MOLLIE MAC WORKINGS  
1 INCH = 100 FEET.

DETAIL OF WHITE QUAIL WORKINGS  
1 INCH = 100 FEET.

- Limestone
- Ore and Gossan
- Schist
- Quartz



KEY MAP  
1 INCH = 4 MILES

**MOLLIE MAC  
WHITE QUAIL  
HIDDEN TREASURE** GROUPS

ON  
GAINER CREEK  
FERGUSON, B.C.