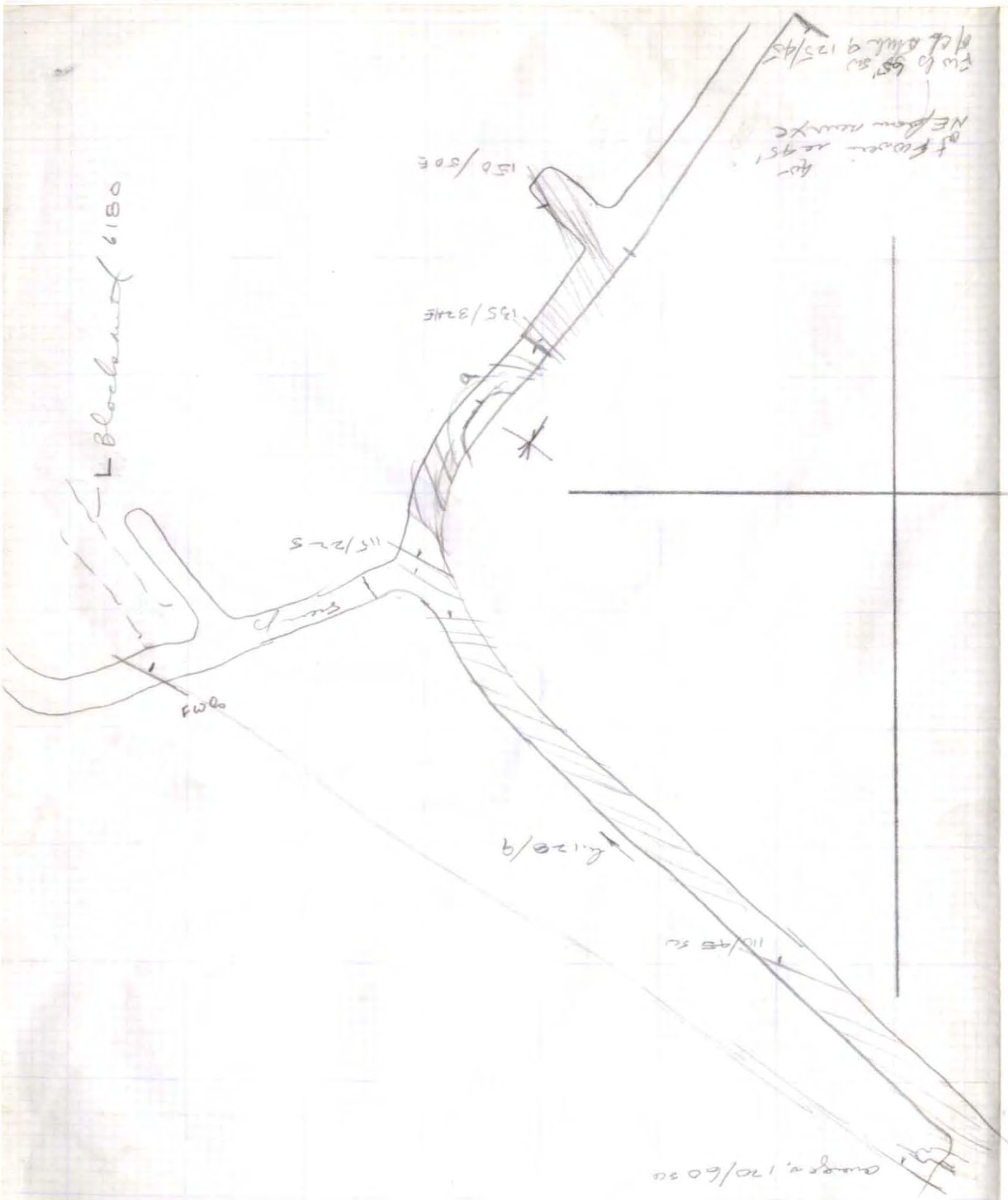


82K/15W
 82K/NE-9
 003714

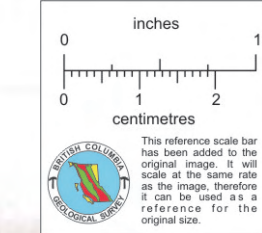


LOWER NELSON
 535

1500000
 100 * 50 * 1500



Foot of E. of part of average 600000
 100 * 50 * 1500
 2-3' of angle about 45 degrees to horizontal
 15' below level of horizontal
 6-11' high



1 IN. = 20 FT.
 FROM RIO CANADIAN
 EXPLORATION LTD
 D CALMENTE
 "RUTH"