

82K15W
82K1NE-9

10000

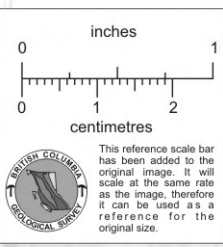
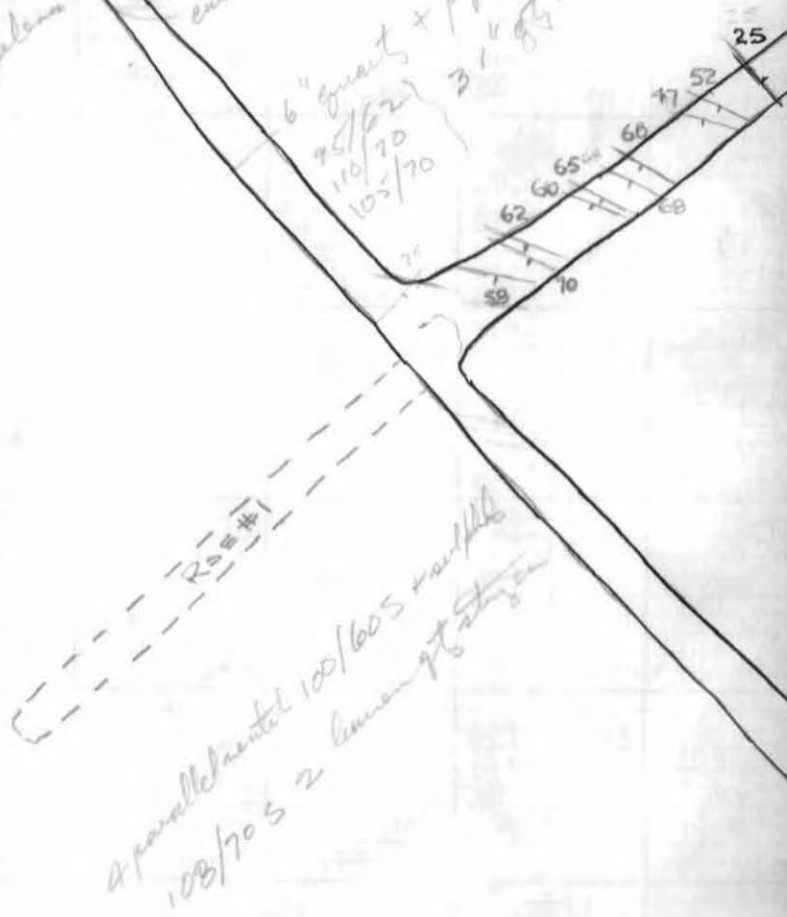
H.S sample 3 1/2 miles
0.10 g / to Ag
32 g / to Ag
18.8 g / to Ag
14.4 g / to Ag

stopped in dip 78°
3' of dip
stopped in dip 75°
1' of dip
dip 75°
NO
Jen



10200E
115/52S 2' gt +
120/63S
185/35E
30/90
25/90
120/63S
185/35E
35 NE
Dip follows beds
AC point 2' gt + pyrite 95/90
20 220 NE

coming up to 1' of gt + pyrite
in 20' of vein
90/85S 120/62S
and pyrite veins
at building center
pyrite veins
155/60W
6" quartz + pyrite 50/90
95/62
110/70
105/70
3' of gt + pyrite
120/85S to 90/50S



6000 LEVEL COLUMBIA RIVER MINES
1" = 40 FT

003711