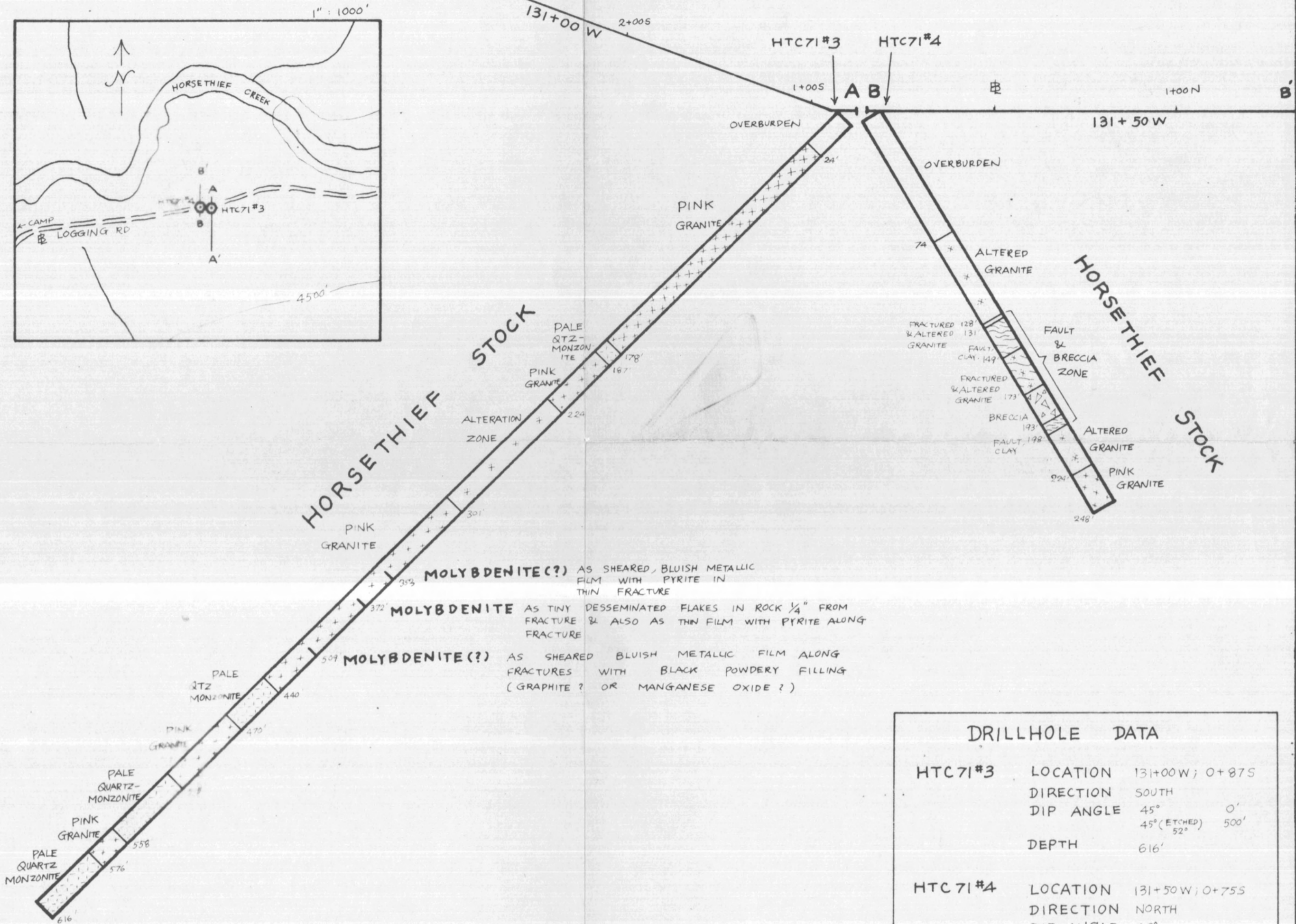
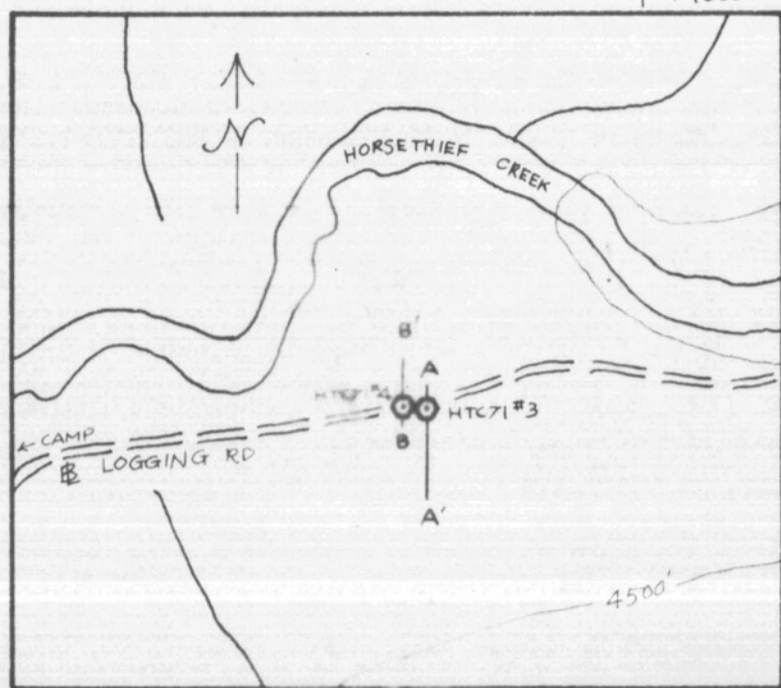


LOOKING WEST

S

N

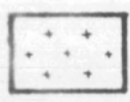

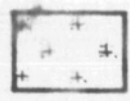


**MOLYBDENITE(?)** AS SHEARED, BLUISH METALLIC FILM WITH PYRITE IN THIN FRACTURE

**MOLYBDENITE** AS TINY DESSEMINATED FLAKES IN ROCK 1/4" FROM FRACTURE & ALSO AS THIN FILM WITH PYRITE ALONG FRACTURE

**MOLYBDENITE(?)** AS SHEARED BLUISH METALLIC FILM ALONG FRACTURES WITH BLACK POWDERY FILLING (GRAPHITE? OR MANGANESE OXIDE?)

STOCK ROCK TYPE

-  **PINK GRANITE**  
MEDIUM-COARSE GRAINED, REDDISH FELDSPAR, CHLORITIZED BIOTITE, SLIGHTLY FRACTURED, INCLUSIONS OF CHLORITIZED BIOTITE COMMON
-  **PALE QUARTZ-MONZONITE**  
MEDIUM-COARSE GRAINED, WHITE & LIGHT PURPLE FELDSPAR, GENERALLY MASSIVE
-  **ALTERED GRANITE**  
KAOLINIZATION OF FELDSPAR, SILICIFICATION, CHLORITIZATION OF BIOTITE

DRILLHOLE DATA		
HTC71#3	LOCATION	131+00W; 0+875
	DIRECTION	SOUTH
	DIP ANGLE	45° 0' 45° (ETCHED) 52°
	DEPTH	616'
HTC71#4	LOCATION	131+50W; 0+755
	DIRECTION	NORTH
	DIP ANGLE	60°
	DEPTH	248'

PROPERTY FILE

003682

CANADIAN JOHNS - MANVILLE CO. LTD. KAMLOOPS, B.C.		
<b>HORSETHIEF CREEK AREA</b>		
DRILLHOLES		
<b>HTC71#3 &amp; HTC71#4</b>		
<b>CROSS-SECTION</b>		
PROJECT 411		
C. P. LIN	1" : 50'	NOV. 1971

