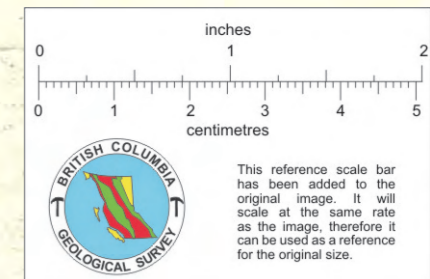
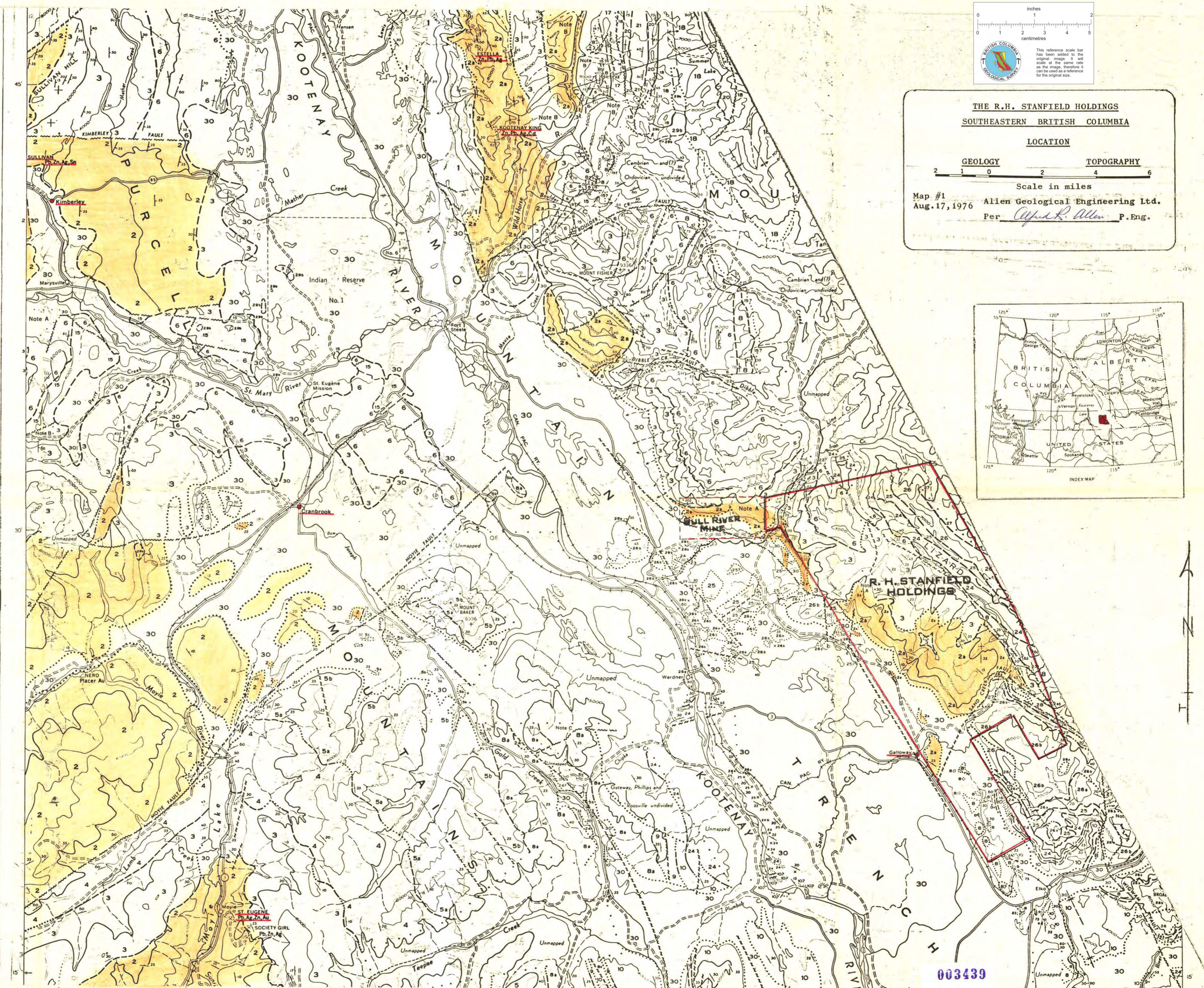


- LEGEND**
- QUATERNARY**
PLEISTOCENE AND RECENT
 30 Till, gravel, sand, silt, alluvium
- CRETACEOUS (?) AND (?) TERTIARY**
 29 29a, quartz monzonite, (White Creek batholith);
 29b, monzonite, quartz monzonite, granodiorite
- TRIASSIC**
 28 SPRAY RIVER FORMATION: dark siltstone and silty shale
- PENNSYLVANIAN AND (?) PERMIAN**
 27 ROCKY MOUNTAIN FORMATION: dolomitic or limy sandstone, quartzite; sandy dolomite and limestone; siltstone, chert
- MISSISSIPPIAN**
 26 Undifferentiated Exshaw and Banff formations and Rundle group;
 26a, EXSHAW FORMATION: black shale; black limestone;
 BANFF FORMATION: dark cherty limestone and laminated silty limestone, grey limestone, limy siltstone, fetid in part;
 26b, RUNDLE GROUP: grey crystalline limestone, crinoidal in part, dark fine-grained limestone, cherty in part, all commonly fetid
- DEVONIAN**
UPPER DEVONIAN
 25 PALLISER FORMATION: Lower (main) Member: massive mottled grey limestone; nodular limestone. Upper Member: thin-bedded nodular shaly limestone
 24 Basal beds: buff and orange-weathering dolomite, sandy dolomite, sandstone (may be older); FAIRHOLME GROUP: Lower Part: fine-grained black and grey limestone, stromatolitic and coralline in part; dolomite. Upper Part: shale and limestone; ALEXO FORMATION: sandstone and sandy limestone; argillaceous limestone
- MIDDLE (?) AND UPPER DEVONIAN**
 23 Limestone, shale; siltstone, dolomite; gypsum (?)
- MIDDLE DEVONIAN AND (?) EARLIER**
 22 Basal unit: buff and orange-weathering dolomite, sandy dolomite, dolomitic sandstone and shale; white quartzite; conglomerate;
 BURTON FORMATION: gypsum, dolomite, limestone;
 HARROGATE FORMATION: fine-grained black limestone; shaly limestone; shale
- SILURIAN AND/OR DEVONIAN**
 21 Shale, limestone; conglomerate, tuff, volcanic breccia, lava, greenstone
- ORDOVICIAN AND SILURIAN**
UPPER ORDOVICIAN AND LOWER AND (?) MIDDLE SILURIAN
 20 BEAVERFOOT-BRISCO FORMATION: dolomite, limestone; conglomerate locally at base, thin graptolitic shale near top
- ORDOVICIAN**
 19 GLENOGLE FORMATION: graptolitic shale and fine-grained siltstone, generally limy; shaly limestone; WONAH FORMATION: quartzite, sandstone
- CAMBRIAN AND ORDOVICIAN**
UPPER CAMBRIAN AND LOWER ORDOVICIAN
 18 Mc KAY GROUP: limestone, shale, intraformational limestone conglomerate
- CAMBRIAN**
MIDDLE AND/OR UPPER CAMBRIAN
 17 JUBILEE AND ELKO FORMATIONS: dolomite
MIDDLE CAMBRIAN
 16 BURTON FORMATION: shale, limestone; sandstone, conglomerate at base
LOWER AND (?) MIDDLE CAMBRIAN
 15 CRANBROOK FORMATION: quartzite, grit, conglomerate; sandstone; EAGER FORMATION: shale, limestone, siltstone, sandstone
- WINDERMERE OR LATER**
 14 Conglomerate
- WINDERMERE**
 13 TOBY FORMATION: conglomerate, argillite, sandstone
- PURCELL**
 12 MOUNT NELSON FORMATION: argillite, dolomite, quartzite
 10 ROOSVILLE FORMATION: laminated green argillite and siltstone, dolomitic in part; laminated black and grey argillite; grey quartzite; orange-weathering grey dolomite and grey-weathering limestone, both commonly stromatolitic and oolitic
 9 PHILLIPS FORMATION: red quartzite, siltstone, and argillite
 11 DUTCH CREEK FORMATION: equivalent to units 8, 9, and 10
 8 GATEWAY FORMATION: grey and green argillite and siltstone, partly dolomitic, grey quartzite; buff and orange weathering dolomite, commonly stromatolitic and in part oolitic; conglomerate; 8a, lower contact may be above base of rest of Gateway formation
 5 5a, green, grey, and purple siltstone, argillite, and quartzite; 5b, chiefly andesitic lava, breccia, and tuff except in Purcell Mountains south of latitude 49°30' where accompanied by green and grey argillite and siltstone, dolomitic in part, and quartzite
 6 7 6. Comprises units 4 and 5 undivided
 7. SIVEH FORMATION: red-weathering grey dolomite and argillaceous dolomite, grey dolomitic argillite and siltstone; quartzite, green argillite, grey-weathering grey limestone. Equivalent to 5a and part (most ?) of 4
 4 KITCHENER FORMATION: grey and green argillite and dolomitic argillite, grey dolomite, sandy in part (dolomitic rocks weather buff to brown); quartzite; grey limestone
 3 CRESTON FORMATION: grey and green argillite and siltstone, grey, green, white, and purple quartzite
 2 ALDRIDGE FORMATION: grey quartzite and siltstone, commonly massive, interbeds, partings, and bed-tops of dark argillite; thinly laminated platy dark argillites and siltstones dominant in upper part, mostly rusty weathering; 2a, dark grey to black laminated argillite grey siltstone and quartzite, rusty weathering. May be equivalent to only upper part of 2
 1 FORT STEELE FORMATION: white siliceous quartzite, grey argillaceous quartzite, dark argillite, grey and black dolomitic and calcareous argillite; dolomite. May be equivalent to lower part of 2



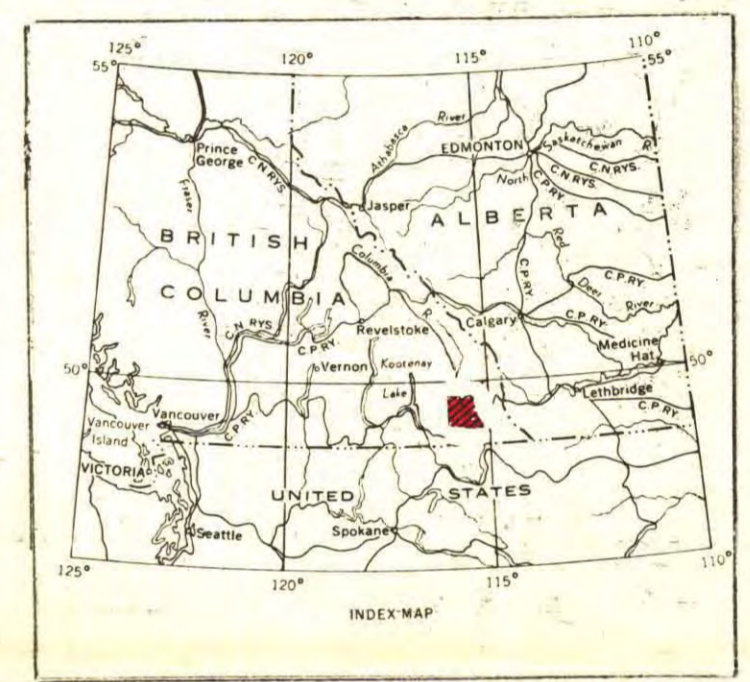
THE R.H. STANFIELD HOLDINGS
 SOUTHEASTERN BRITISH COLUMBIA

LOCATION

GEOLOGY TOPOGRAPHY

Scale in miles

Map #1
 Aug. 17, 1976 Allen Geological Engineering Ltd.
 Per *Alfred R. Allen* P. Eng.



Geology by H. M. A. Rice, 1935; G. B. Leech, 1956;
 G. B. Leech and R. L. G. G. Leech, 1957;
 Compilation by G. B. Leech

003439