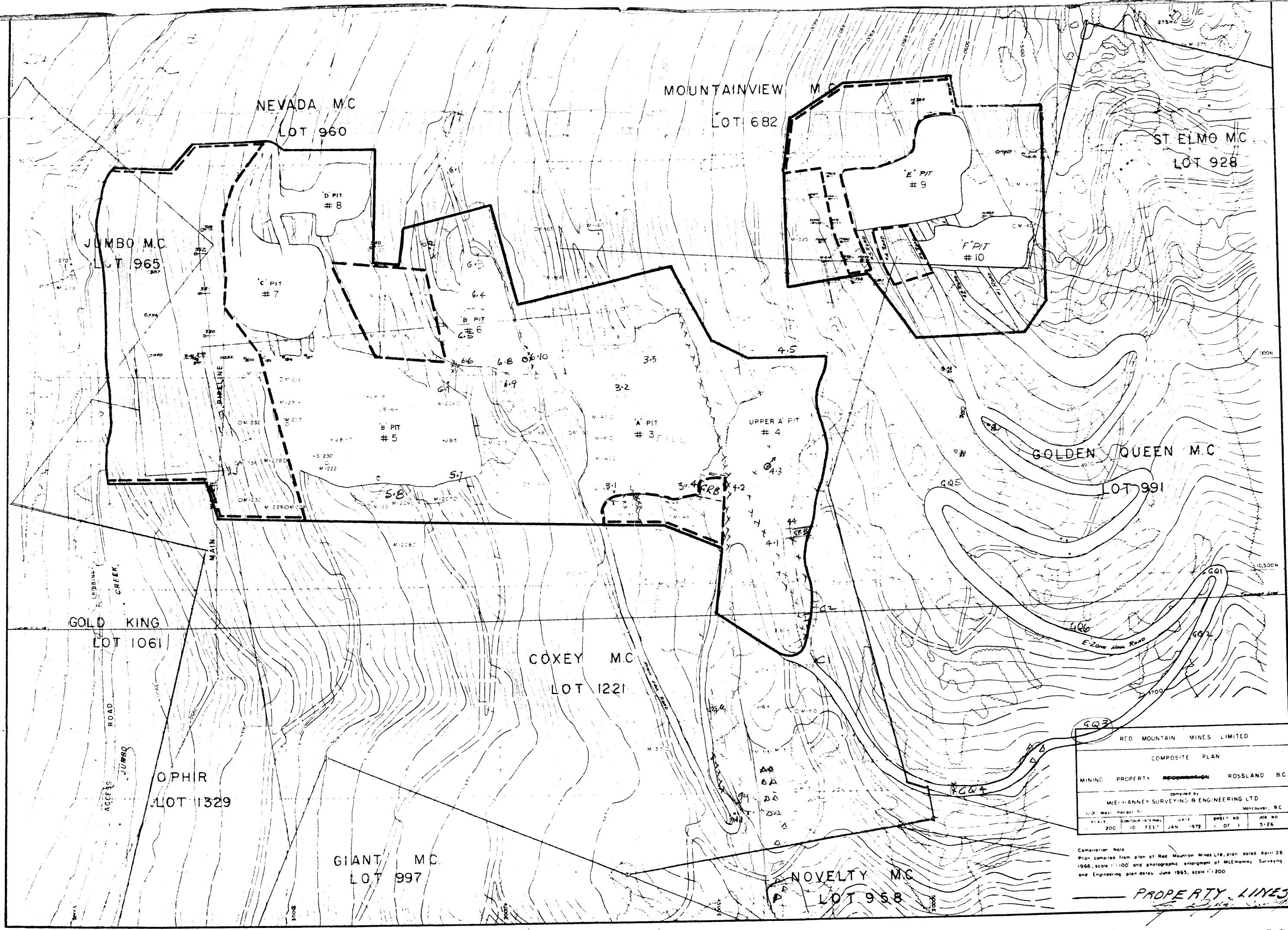


82F5W110  
PROPERTY FILE



RED MOUNTAIN MINES LIMITED				
COMPOSITE PLAN				
MINING PROPERTY		RECONSTRUCTION	ROSSLAND BC	
compiled by				
MCELHANNY SURVEYING & ENGINEERING LTD				
110 West Vander St. Vancouver, BC				
SCALE	CONTOUR INTERVAL	DATE	SHEET NO	JOB NO
200	10 FEET	JAN '92	OF 1	5126

Completion Note  
 Plan compiled from plan of Red Mountain Mines Ltd. plan dated April 28 1966, scale 1:100 and photographic enlargement of McElhanny, Surveying and Engineering plan dated June 1965, scale 1:200

PROPERTY LINES

60339

~~003161~~ 60883

