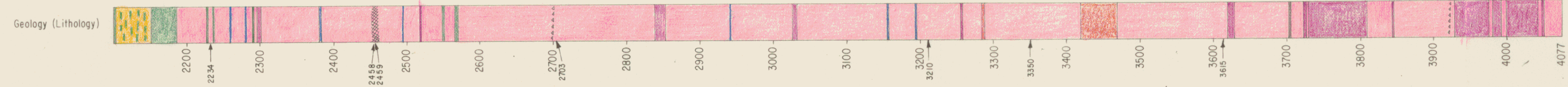


Texture:	Destroyed			
	Breccia			
Mineralization:	Weak	Moderate	Strong	
	MoS ₂ - Vein			
	Disseminated			
	WO ₃			
Alteration:	Vein			
	Replacement			



RED MOUNTAIN
 Rosland - B.C
 DDH. R-17

SCALE: 1" = 100'

003075

PROPERTY FILE 82FSW110