

002710

The Consolidated Mining and Smelting Company of Canada Limited

Drawn by: GFW		Traced by:	
Revised by	Date	Revised by	Date

S. WALL.

91 STOPE

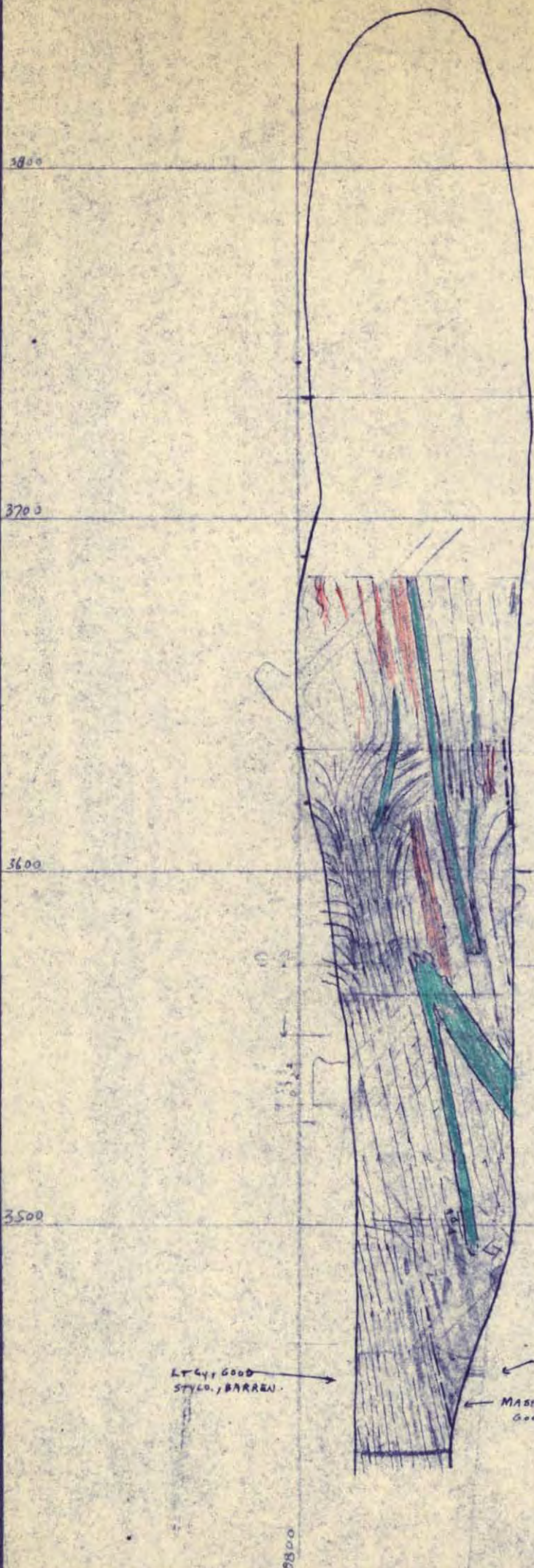
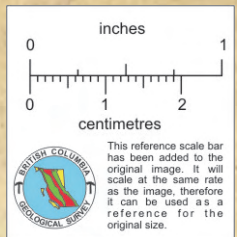
9042N

Scale: 1" = 40'

Date: MAY 3/55

Plate:





3795

1952

3635

LTGY, GOOD STYLO, BARREN.

3' FLAT, GOING INTO E. WALL. H. 2MS (270/20'S)

MASSIVE LT GY DOL. GOOD PATCHES PY + PBS.

8300

**The Consolidated Mining and Smelting Company of Canada Limited**

Drawn by: GFW		Traced by:	
Revised by	Date	Revised by	Date

N. WALL

91 STOPE

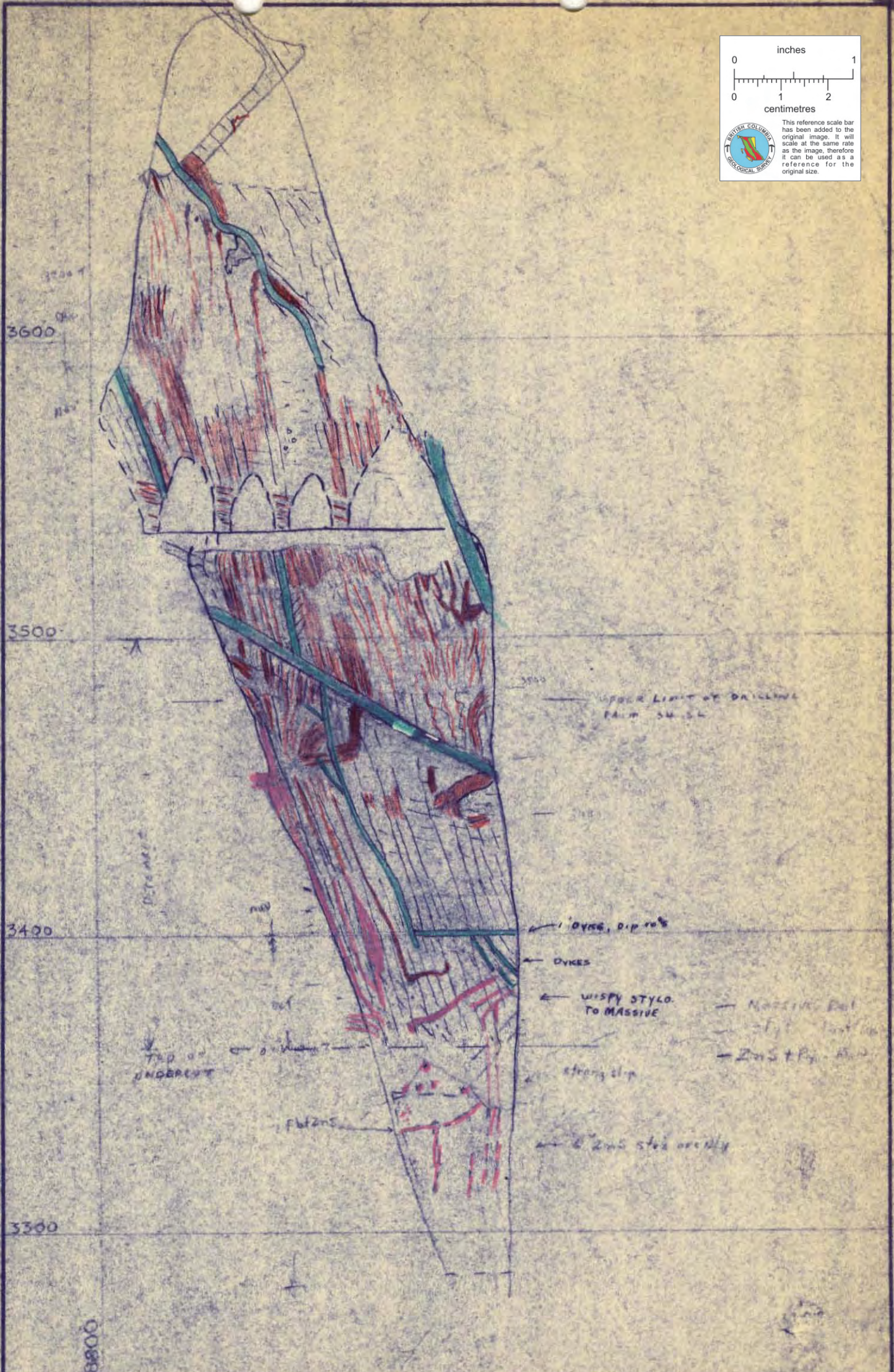
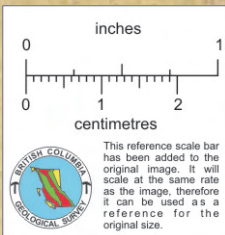
9122 N

Scale: 1" = 40'

Date: MAY 3/55

Plate:





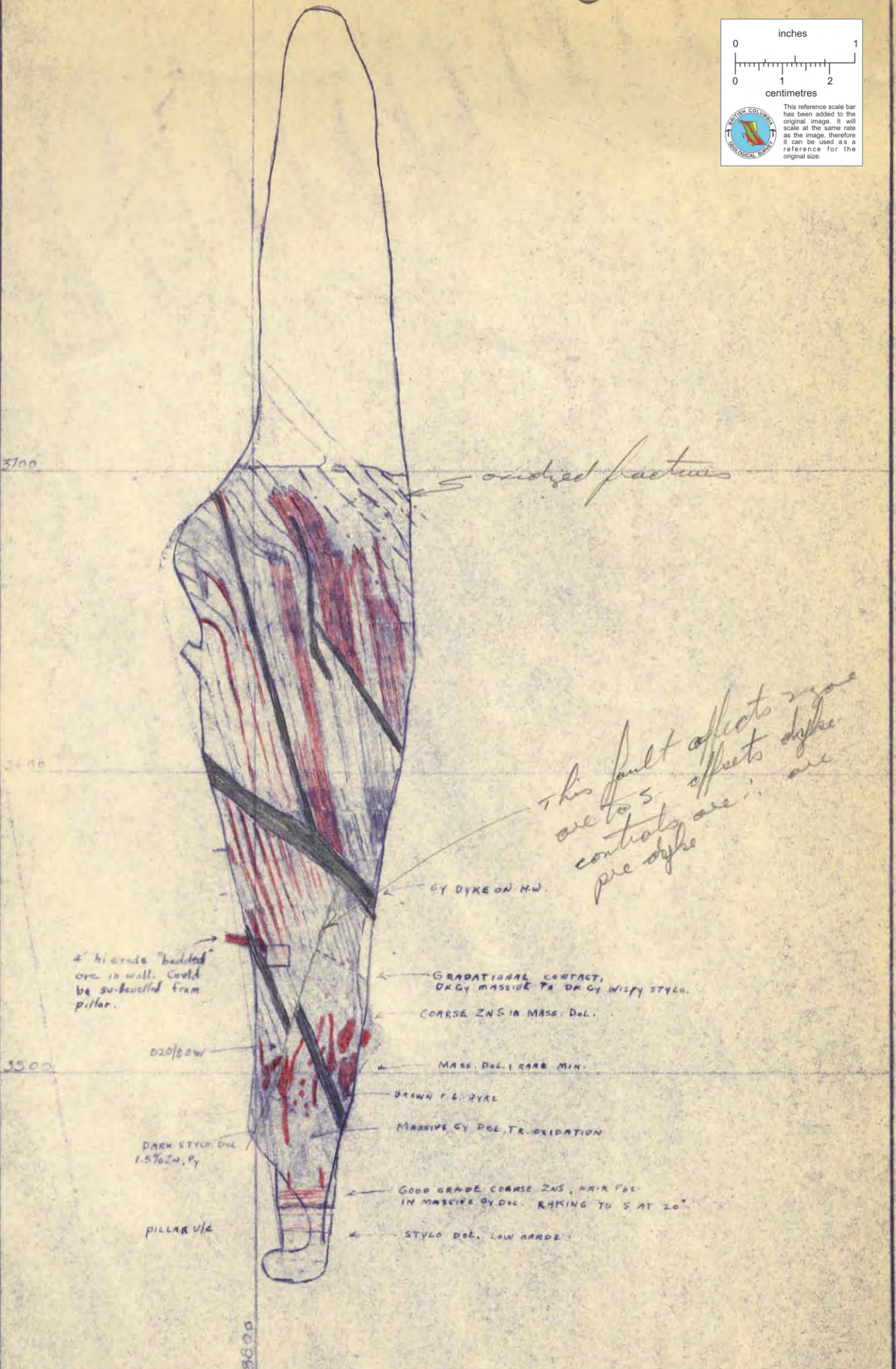
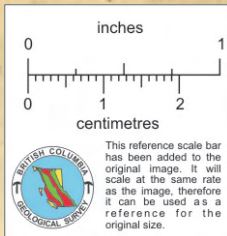
**The Consolidated Mining and Smelting Company of Canada Limited**

Drawn by: G.F.W.		Traced by:	
Revised by	Date	Revised by	Date

90:89 STOPE SLOT N. WALL  
8726 N

Scale: 1" = 40'      Date: MAR /53      Plate:





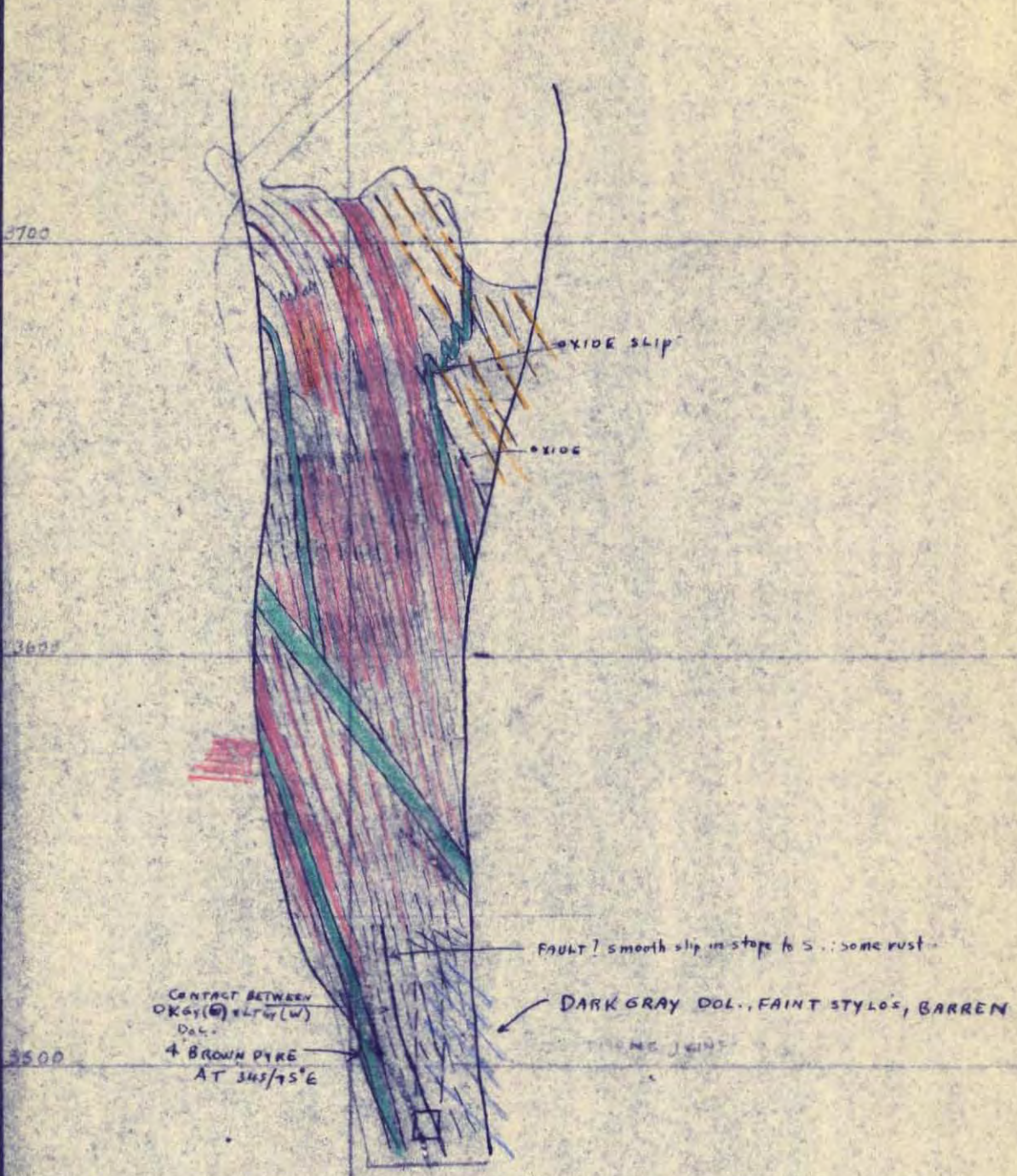
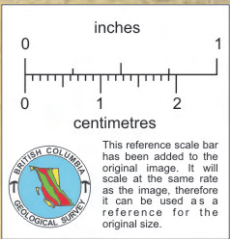
**The Consolidated Mining and Smelting Company of Canada Limited**

Drawn by: G.F.W		Traced by:	
Revised by	Date	Revised by	Date

SOUTH WALL - 92 STOPE  
9174 N.

Scale: 1" = 40      Date: MAY 3/55      Plate:





**The Consolidated Mining and Smelting Company of Canada Limited**

Drawn by: <b>GFW</b>		Traced by:	
Revised by	Date	Revised by	Date

**N. WALL** **92 STOPE**  
 9250 N

Scale:  $1'' = 40'$       Date: **MAY 3/55**      Plate: