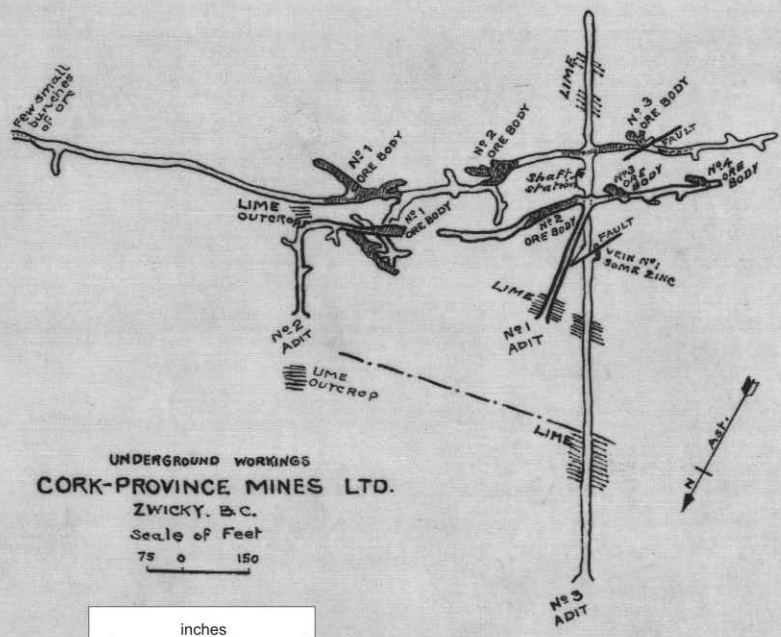


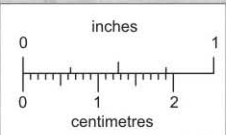
(5)

OK



UNDERGROUND WORKINGS
CORK-PROVINCE MINES LTD.

ZWICKY, B.C.
 Scale of Feet
 75 0 150

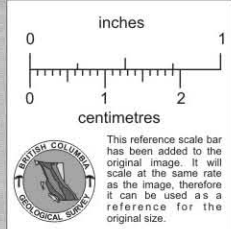


This reference scale bar has been added to the original image. It will scale at the same rate as the image, therefore it can be used as a reference for the original size.

PLAN AND SECTIONS OF CORK-PROVINCE MINE

Cork-Province Mines Limited, N.P.L.
Keen Creek, Ainsworth Mining Division.

Scale 1" = 40'



Stope back 45' above No. 4 Level
40' Long by 7.75' average width
Avge assay Ag. 1.9oz. Pb. 1.8% Zn. 5.6%

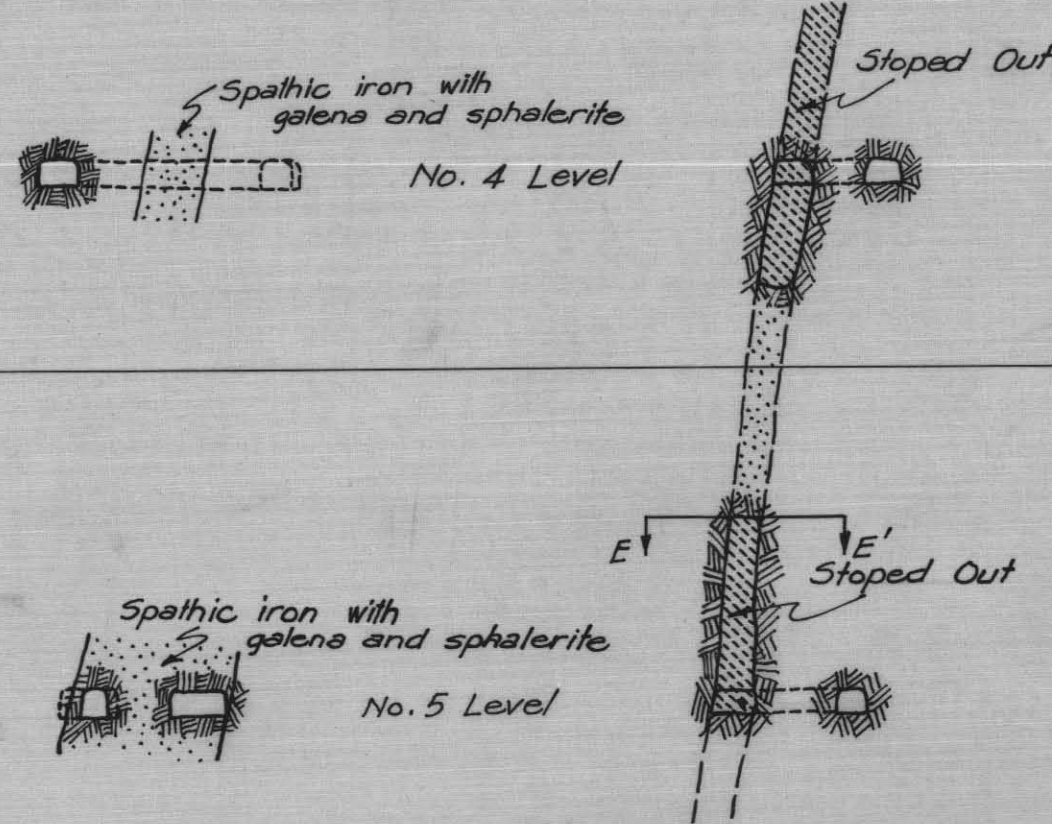
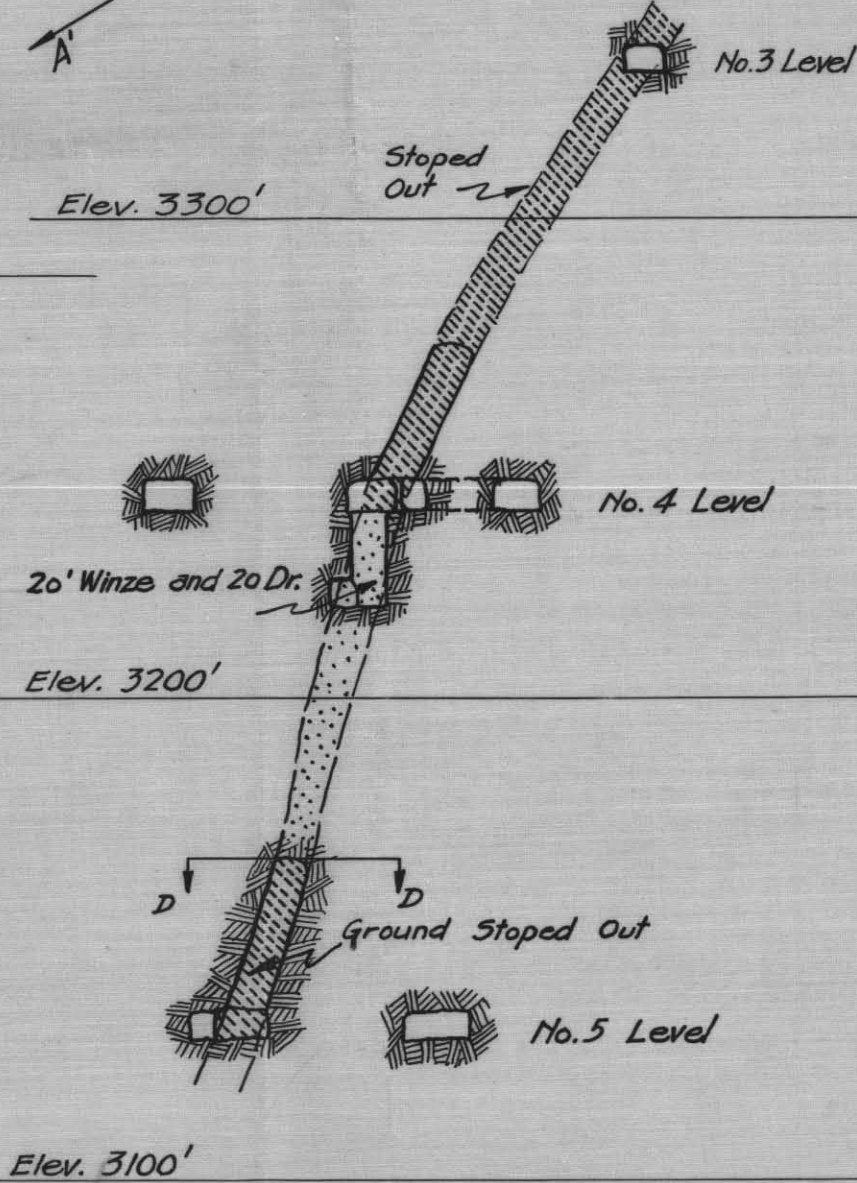
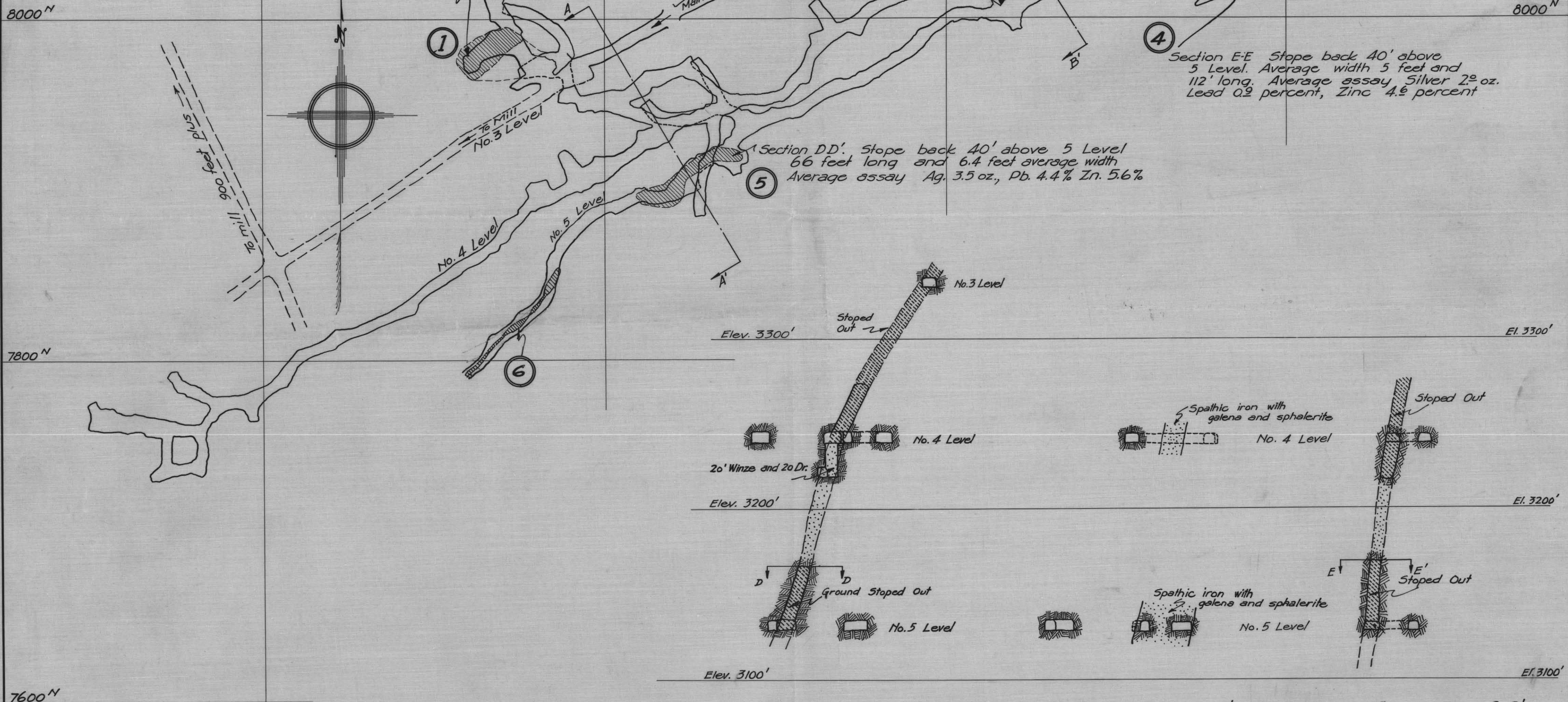
No. 3 Level
Main Haulage Level to Mill

2 Block From 3 Level to 4 Level

3 Block From 4 Level to 5 Level

4 Section E-E Stope back 40' above
5 Level. Average width 5 feet and
112' long. Average assay Silver 2.0 oz.
Lead 0.2 percent, Zinc 4.6 percent

5 Section D-D' Stope back 40' above 5 Level
66 feet long and 6.4 feet average width
Average assay Ag. 3.5 oz., Pb. 4.4% Zn. 5.6%



SECTION A-A'

SECTION B-B'

SECTION C-C'

To Accompany Report by A.M. Richmond,
Assistant Resident Engineer, Nelson, B.C.
B.C. Bureau of Mines, 1929.

PROPERTY FILE

82F/14E
82F/NW-94

002274

Drawn by A.M. Richmond.