

82F/15W  
82F/NE-16

001742

THE CONSOLIDATED MINING AND SMELTING COMPANY  
OF CANADA LIMITED

CABLE ADDRESS  
"COMINCO"

Geological Division  
Trail, B. C.  
April 5, 1955.

Dr. M. S. Hedley,  
B. C. Dept. of Mines  
Victoria, B. C.

Dear Sir:

Thank you for your paper on the "Lead-Zinc Deposits in the Kootenay Arc", which I received via Jim Fyles and which was read with much interest.

I wish to comment on your concept of probable intense deformation in the Ainsworth district as opposed to the previously accepted idea of an apparently simple structure here. Your ideas are in complete accord with my views on the structure, which were arrived at from last season's detailed geological study and previous reconnaissance work. I believe there is tight isoclinal folding represented here combined with rupturing in the form of low-angle thrust faults along some of the axial planes of the folds. The attached section will illustrate our concept of the structure in a small area in the vicinity of the Kootenay Florence Mine.

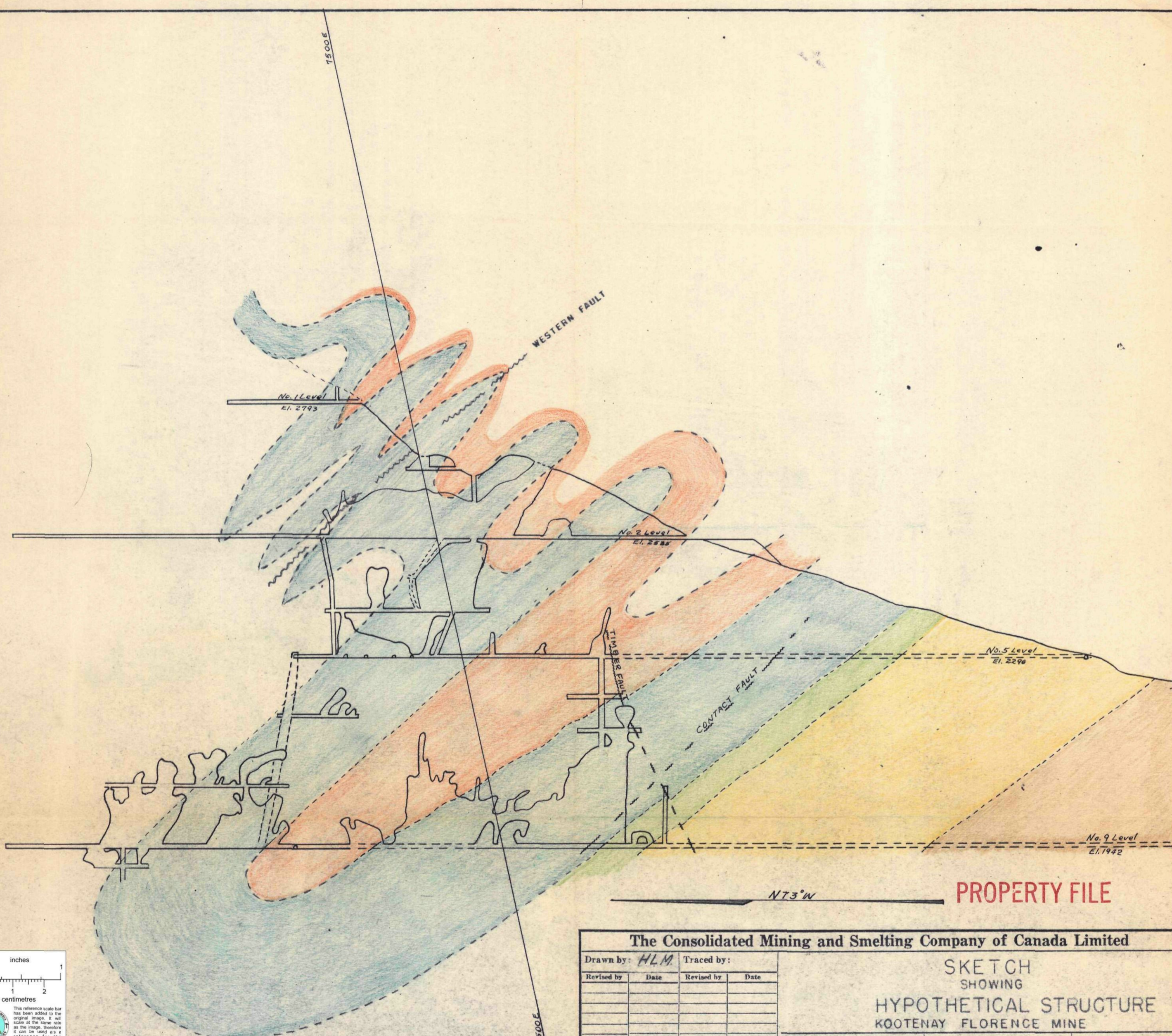
At Yale and Kootenay Florence Mine stratigraphic correlation could not be obtained everywhere between surface and the mine workings. Although this lack of vertical continuity appears to be inconsistent with the considerable strike continuity of the various members, I think it can be explained by numerous tight, flat-plunging isoclinal folds and associated low-angle thrust faults.

Yours very truly,

  
James Richardson

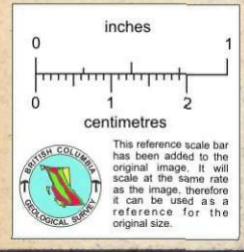
JR:jh  
Encl.

PROPERTY FILE



**PROPERTY FILE**

N73°W



**The Consolidated Mining and Smelting Company of Canada Limited**

Drawn by: <i>HLM</i>		Traced by:	
Revised by	Date	Revised by	Date

SKETCH  
SHOWING  
HYPOTHETICAL STRUCTURE  
KOOTENAY FLORENCE MINE

Scale: 1" = 200'	Date: MAR / 55	Plate: A-R 65
------------------	----------------	---------------