

M 16 2
Date received reports
1 inch (1000) units.

LOG NO: 0323	RD.
ACTION:	
FILE NO:	

RAM EXPLORATIONS LTD.

001360

REPORT ON PHASE I
EXPLORATION
BURNT BASIN PROPERTY
GREENWOOD MINING DIVISION
SOUTHEASTERN, B.C.

Latitude = 49° 11'
Longitude = 118° 08'
NTS = 82E1E

GREENWOOD MINING DIVISION
SOUTHEASTERN, B.C.

17,076
970,21

Mineral Claims

Ajax Fr., Arlington, Ennismore, Motherlode, Motherlode Fr.,
Daly, Burnt Basin, Aldeen, Kittie, Jennie Lind Fr.,
Tunnel, Eva Bell, Golden Age, Halifax, Hastings

Owner/Operator: Westrim Resources Inc.

Date Submitted: June 29, 1987

Reported By: C. von Einsiedel, BSc.

TABLE OF CONTENTS

	<u>Page</u>
TERMS OF REFERENCE	1
INTRODUCTION	1
SUMMARY & RECOMMENDATIONS	2
SECTION 1 - GENERAL	
1.1 Property Location, Access, Title	6
1.2 Previous Exploration	8
SECTION 2 - DESCRIPTION OF PROGRAM AND RESULTS	
2.1 Exploration Targets	9
2.2 Diamond Drilling - "Motherlode Showing"	9
2.3 Detail Gooden Survey - Halifax & Eva Beli Showing	10
REFERENCES	
CERTIFICATE	
APPENDIX I - Cost Statement	
APPENDIX II - Geochemical Data	
APPENDIX III - Diamond Drill Logs	

LIST OF FIGURES

		<u>Page</u>
Figure 1	Location & Claim Map	5
Figure 2	Topographic Map	7
Figure 3	Compilation Map	In pocket
Figure 4	Geochemical Plan (Ag) (1:2,500) (Halifax - Eva Bell Detail Survey)	In pocket
Figure 5	Geochemical Plan (Pb)	In pocket
Figure 6	Geochemical Plan (Zn)	In pocket
Figure 7	Geochemical Plan (Cu) /	In pocket

TERMS OF REFERENCE

In April 1986 Westrim Resources Inc. acquired an option to purchase 15 reverted crown grants situated near Christina Lake in southeastern British Columbia. The property covers several precious and base metal occurrences which have been explored intermittently since the late 1800's.

During June and July 1986, Westrim completed detailed geological mapping of known occurrences and carried out a reconnaissance scale soil geochemical survey. Based on the results of these surveys, P.E. Christopher, P. Eng. recommended a three stage program of continued exploration with emphasis on two of the known prospects.

INTRODUCTION

On April 15, 1987 Westrim commissioned Ram Exploration to carry out Phase I of the program recommended by Christopher in 1986. Between April 15 and May 30, 1987 the author supervised trenching and diamond drilling of gold bearing quartz veins in the northeastern part of the property and completed detailed fill-in geochemical surveys to delineate possible stratiform massive sulfide mineralization in the south central part of the claim group.

This report describes results of these surveys and outlines recommendations for continued exploration.

SUMMARY AND RECOMMENDATIONS

The Burnt Basin property consists of 15 reverted crown grants covering an area of approximately 80 acres near Christina Lake in southeastern B.C. The claims cover British Columbian Government mineral inventory showings:

082E SE 082 - (Mother Lode (L1508)), 082 - (Molly Gibson (L595)), 098 - (Manitou (L1753)), 099 - (Halifax/Eva Bell (L3042)), 100 - (Arlington (L2596)), 102 - (Burnt Basin (L1136)), and 103 - (Kittie (L1748)), Aldenn (1749), Tunnel (L1750).

The claim group is situated in the Omineca Tectonic Belt and is underlain by sedimentary and volcanic rocks belonging to the Permian aged Mt. Roberts formation. Stratigraphy consists primarily of grey to black limestones with intercalated argillaceous sidersents and greenstones.

Christopher, 1986 describes two principal types of mineralization within the claim area:

- 1) Quartz vein mineralization, typified by the showings on the Motherlode vein (Fig. 4). The veins contain pods or small lenses of pyrite, disseminated and fracture controlled chalcopyrite, local pyrite rich vein selvages and minor disseminated molybdenite. Galena is variably present as a minor to trace mineral. Examination of quartz material from the dump revealed the presence of visible gold. Reports by E.W. Brock (1906) and B.C. Dept. of Mines (Annual Report 1917) indicate the presence of platinum in grades from nil to 0.75 oz./ton. A 50 ton bulk shipment of unsorted dump material from the Motherlode ran 0.229 oz./ton Au. (S. Ruzicka - pers. comm.)
- 2) The majority of the mineral showing within the claim area are silver-lead-zinc type and are comprised of massive to disseminated galena, sphalerite, magnetite and pyrrhotite in limey argillaceous hornfelsed rock. A type of "skarn" mineralization occurs at the Upper Eva Bell showings and consists of

pyrite, pyrrhotite, arsenopyrite, magnetite, chalcopyrite, galena and sphalerite with exotic minerals including cubanite, nicollite, violarite, loellingite, cobaltite, acanthite and argentian pentlandite identified by the Mineral Sciences Division of the Department of Energy, Mines and Resources. The mineralization occurs as a small pod about 1.5 m to 2 m x 3 m of massive sulphide. The rock has been so disturbed by the bulldozer that contact relationships with the wall rock are not evident. Similar looking but lower grade mineralization occurs several hundred meters to the southwest.

Previous operators (Donna Mines, Aljiva Mines, etc.) have reported significant mineralization, especially of the "skarn" copper-lead-zinc-silver type. Shear, 1973 described trench sampling at the Halifax which intersected mineralization grading 2.28% copper, 2.30% zinc, 1.52% lead and 8.42 oz./ton silver with low but significant gold values.

In 1979 Granges Exploration optioned the property and completed 290 m of diamond drilling in three holes. Although results were discouraging, it was established that this type of mineralization may be "exhalitive" rather than "skarn" type.

The objective of the present exploration program was to evaluate two of the known prospects (Eva Bell/Halifax and Motherlode). The program consisted of trenching and 425 metres of diamond drilling at the Motherlode prospect and detailed fill-in soil geochemical surveys in the Halifax/Eva Bell area. Results indicate that gold bearing quartz veins at the Motherlode are discontinuous and therefore have very limited tonnage potential.

Of principal interest is the "skarn" or "exhalitive" type silver and base mineralization developed at the Halifax/Eva Bell prospect. Detailed soil sampling was carried out across both the Halifax and Eva Bell claims and also across an intervening fractional claim (Lot 1753). Results indicate a more or less continuous zone of mineralization 350 m long and 100 m wide across the three claims.

agnetite, chalcopyrite, galena and
ding cubanite, nicollite, violarite,
entian pentlandite identified by the
partment of Energy, Mines and
s a small pod about 1.5 m to 2 m x
been so disturbed by the bulldozer
ill rock are not evident. Similar
occurs several hundred meters to the

etc.) have reported significant
lead-zinc-silver type. Shear, 1973
intersected mineralization grading
ton silver with low but significant

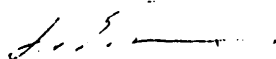
and completed 290 m of diamond
drilling, it was established that this
is a "skarn" type.

As to evaluate two of the known
programs consisted of trenching and
prospecting and detailed fill-in soil
results indicate that gold bearing
and therefore have very limited

pe silver and base mineralization
soil sampling was carried out
across an intervening fractional
continuous zone of mineralization

Previous operators have not been systematic in their evaluation
It is recommended that Westrim option or purchase Lot 1733 and
Exploration as recommended by Christopher, 1986.

Respectfully submitted,


C. von Einsiedel, B.Sc.
Consulting Geologist

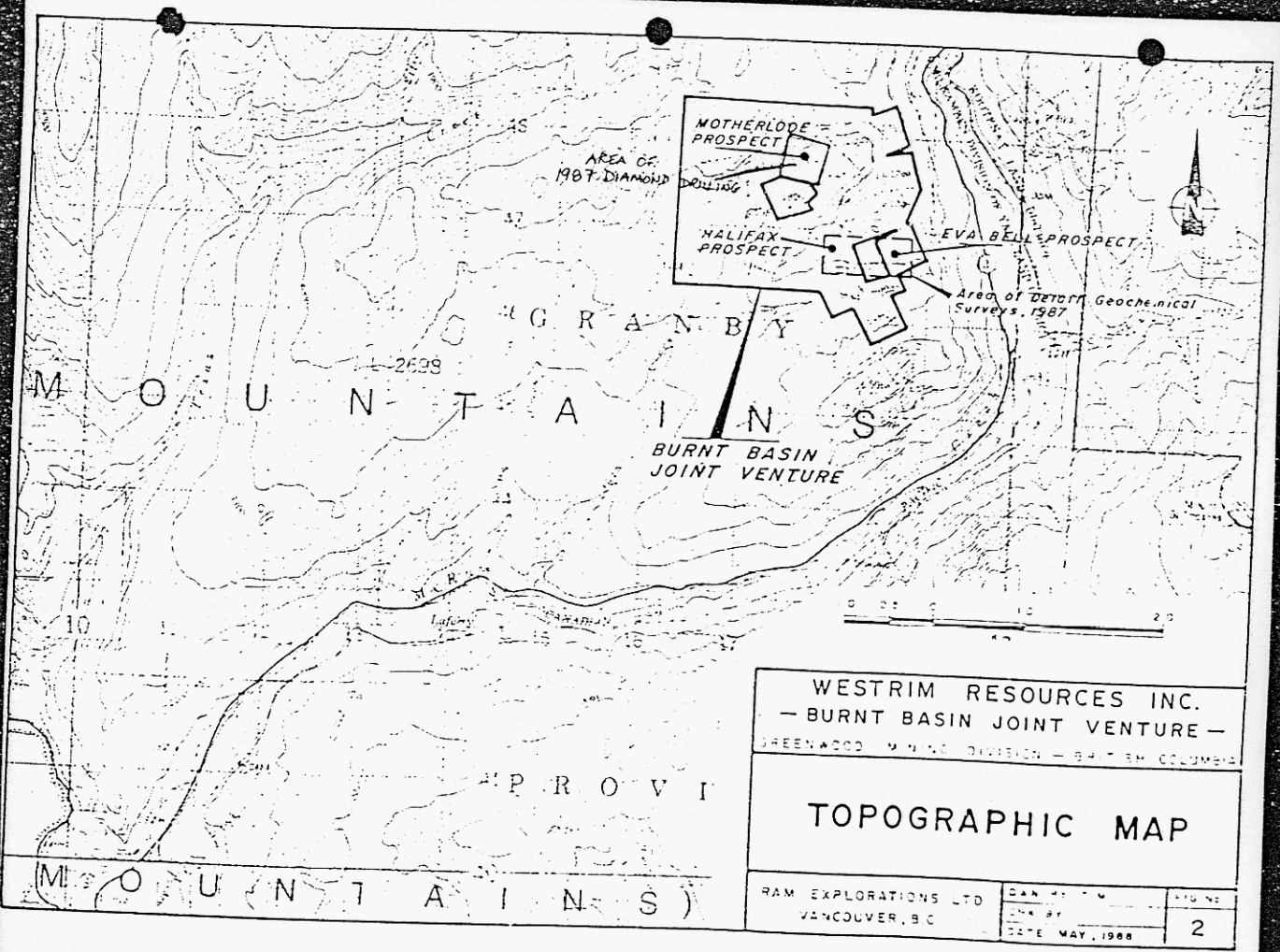
1.1 Property Location, Access, Ownership

The Burnt Basin Claim Group is situated approximately 13 kilometres northeast of Christina Lake, roughly 25 kilometres west of Trail in southeastern B.C. The centre of the claim group is located at Latitude 49°11'N and Longitude 118°08'W.

Access to the property is via Highway No. 3 from either Grand Forks or Castlegar to the Paulson Bridge. A 4 x 4 track extends from the Paulson Bridge along the eastern side of the claims and then extends across the southern part of the property. A continuation of this road traverses Josh Creek to the northwestern part of the claim area. Topographic relief on the property is not extreme, although a few localized steep slopes are present. Elevations range from 1,189 m along Josh Creek to 1,424 m at the highest point on the property.

Title to the property is recorded on Mineral Title Reference Map No. 82E1E, Greenwood Mining Division as follows:

<u>Name</u>	<u>Record No.</u>	<u>Expiry</u>	<u>Month</u>	<u>Recorded</u>
Hastings	4213	1987	11	
Arlington	4268	1988	3	(March 8/85)
Ennismore	4269	1988	3	(March 8/85)
• Motherlode (L. 1508)	4270	1988	3	(March 8/85)
Motherlode Fr.	4271	1988	3	(March 8/85)
Ajax Fr.	4270	1988	3	(March 8/85)
Daly	4271	1988	3	(March 8/85)
Burnt Basin	4272	1988	3	(March 8/85)
Aldeen	4273	1988	3	(March 8/85)
Kittie	4274	1988	3	(March 8/85)
Jennie Lind Fr.	4275	1988	3	(March 8/85)
Tunnel	4276	1988	3	(March 8/85)
Eva Bell	4277	1988	3	(March 8/85)
Golden Age (L. 3044)	4445	1986	9	(Sept. 26/85)
Halifax (L. 3042)	4446	1986	9	(Sept. 26/85)



WESTRIM RESOURCES INC.
 - BURNT BASIN JOINT VENTURE -
 GREENWOOD MINING DIVISION - BRITISH COLUMBIA

TOPOGRAPHIC MAP

RAM EXPLORATIONS LTD VANCOUVER, B.C.	DRAWN BY	FIG NO
	DATE MAY, 1988	2

1.2 Previous Exploration

The Burnt Basin claim area was originally prospected during the late 1800's, however, much of this information was not recorded.

Since 1965, several operators have explored known showings on the property and direct shipped small quantities of ore mainly from the Eva Bell claim. The following table is a chronological summary since 1965:

- Burnt Basin*
- 1965 - Christina Lake Mines - geological, geochemical and magnetometer surveys were completed. Some diamond drilling - Hole 1 32-36'. *Ajax*
- 1968 - Dalex Mines - an induced polarization survey and considerable stripping and trenching on L1136 and L1509. Geochemical survey, trenching and stripping and seven holes totalling 2,142 feet.
- 1971 - Burnt Basin Mines completed geological mapping, magnetometer survey, trenching and stripping, drilled five holes totalling 661 feet and made a 47 ton shipment to Trail reported to grade 6 oz. Ag/ton, 16% Zn and 8% Pb.
- 1972-75 - Donna Mines, reports by E.O. Chisholm and H. Shear, line cutting and magnetometer surveys on the Eva Bell and Halifax, and five short diamond drill holes on the Eva Bell, cat trenching and percussion drilling. Shipped a total of 1,488 tons to Trail. H.B. Mine, Re-Mac Mines and Kam-Kotia. *1350* *1485*
- 1975-76 - Alviiji Mines Ltd. - produced 1,750 tons and shipped 335 tons yielding 3.1 oz. Ag/ton, 4.45% Pb, 6.75% Zn with 21.5% magnetite to the H.B. Mine at Salmo. *1062 1/2*
- 1977 - Paulson Mines Ltd. completed 1,500 feet of diamond drilling on the Halifax claim and published intercepts of up to 6' grading 12.4 oz. Ag/ton, 19.7% lead and 14.9% zinc.
- 1978 - Oliver Resources completed a Vector Pulse E.M. Surevey, I.P. Survey and Magnetometer Survey with about 10 km completed.
- 1979 - Granges Exploration Ltd. completed 291 m of diamond drilling on the Eva Bell and BP No. 2 (adjoins Eva Bell to the east).

2.1 Exploration Targets

Based on results of exploration conducted by previous operators and Westrim Resources, P.E. Christopher, P. Eng. recommended that:

- 1) Trenching and drilling be carried out in the area of the Motherlode workings, and,
- 2) Detailed fill-in geochemical surveys be conducted over the Halifax/Eva Bell area. The Halifax and Eva Bell claim are separated by a narrow claim fraction (Lot No. 1753) however, it was recommended that the geochemical survey be extended across this claim.

In addition, it was recommended that further prospecting be carried out in the Aldeen and Kittie claim areas.

2.2 Diamond Drilling - "Motherlode Showing" (please refer to Figure No. 3/3)

The Motherlode workings are situated in the northwestern part of the property and consist of several open cuts, prospect adits and a small shaft. The workings expose gold bearing quartz veins which vary in width from 0.35 to 1.2 m (see P.E. Christopher, 1986 for detailed maps of the showing area).

To evaluate this occurrence, a live hole diamond drilling program totalling 425 metres was carried out. Drilling was designed to test the intersection of two veins, one of which strikes approximately east-west with a shallow northerly dip and a north-south striking near vertical vein. Stan Ruzika (a former owner of the claim) indicated that this intersection was the location from which several high grade (1.0 oz./ton gold) samples had been obtained.

Drilling results were discouraging. DDH 87-01 to 87-05 were completed in sheared, pyritized volcanics (3% pyrite) and did not intersect a down dip

continuation of the veins. Several samples of the pyritized volcanics were assayed and returned negligible results (see Appendix II).

The drill core is stored at the drill site, adjacent to DDH 87-1 on the Motherload (Lot 1508).

2.3 Detail Geochem Survey - Halifax/Eva Bell Area (please refer to Figure Nos. 3 to 7)

The Halifax/Eva Bell prospect is situated in the south central part of the property and covers several contact related silver-lead-zinc (gold) showings. During 1986 Westrim completed a reconnaissance scale (100 m spaced lines 25 m spaced sample sites) geochemical survey over the entire Burnt Basin property. The most significant anomalies were identified in the Halifax/Eva Bell area (Christopher, 1986).

The present survey was designed as a fill-in survey and comprised a total of 135 samples collected at 12.5 m intervals along 25 to 50 m spaced profile lines. Results for silver, lead, zinc and copper are shown in Figure Nos. 4 to 7. These results clearly indicate the presence of widespread mineralization of the "skarn" or "exhalitive" type on the Halifax, Eva Bell and Lot No. 1753 claims.

Soil samples were collected from the "B" horizon which averaged about 30 centimeters depth.

Geochemical multielement analyses are included in Appendix I.

Contoured geochemical data is compiled in Figures 4-7, inclusive.

REFERENCES

The following maps, publications and reports were noted by Christopher in a report prepared in 1986. Those references marked with an asterisk were used in the compilation of this study.

- Alvija Mines Ltd. June 5, 1974.
- Alvija Mines Ltd. Sept. 3, 1976 - Report to Shareholders.
- British Columbia Minister of Mines Annual Report 1901; p. 106, 1904; p. 299.
- British Columbia Ministry of Mines, Geology and Exploration in B.C. 1909 - 311, 1973 - 36.
- Brock, E.W., 1902. Abstract B.C.D.M.
- Brock, E.W., 1903. Summary Report p. 90-134 G.S.C. *
- Burnt Basin Mines Ltd. Magnetometer Survey Plan 1"=200'.
- Chaplin, R.E., 1965. Examination Report for Christina Lake Mines Ltd. April 1965.
- Christina Lake Mines Ltd., Reconnaissance Geology Plan 1"=200'.
- Christopher, P.E., 1986. Geological, Geochemical and Geophysical * report on the Burnt Basin claim group. West Rim Resources Prospectus.
- Chisholm, E.O., 1972. Report on Donna Mines Ltd. August 1972.
- Dolmage, V., 1965. Examination Report for Christina Lake Mines * Ltd. September 1965.
- Little, H.W., 1957. Kettle River (East Half). G.S.C. Map 6 -1957.
- Mauritsen, S.A., 1968A. Geological Report on Burnt Basin Property * for Dalex Mines Ltd., September 20, 1968.
- Mauritsen, S.A., 1968B. Geophysical Report on I.P. Survey, Burnt Basin Property for Dalex Mines Ltd., September 21, 1968.
- Oliver Resources Ltd., November 20, 1978 New Release.

Osacaff, K., 1965. Geochem Survey Plan. 1"=200'. July 1965.

Paulson Mines Ltd. Report to Shareholders; June 15, 1977, Aug. 5, 1977.

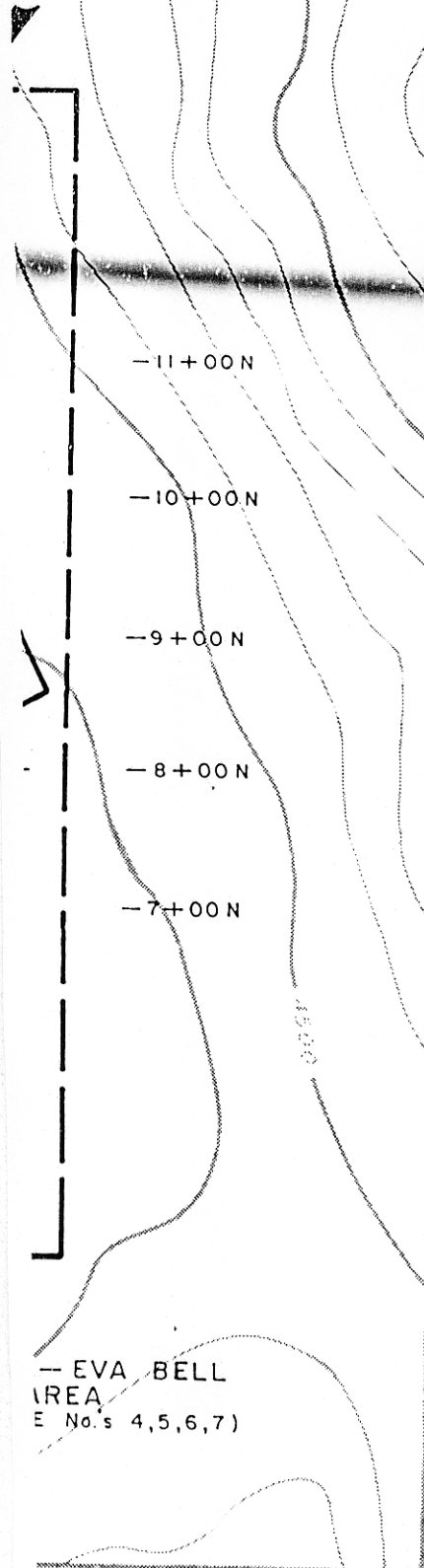
Renshaw, R.E., 1964. Geological Report on Halifax, Geochem Survey Plan. Christina Lake Mines Ltd. July 1964.

Ruzicka, S., - Misc. Field notes and records made available to the writer. 1986.

Shear, H.H., 1973. Progress Report on Donna Mines. November • 1973.

H.H. Shear, 1979, Report on Diamond Drilling Program, Burnt Basin • Property, Granges Exploration ABA.

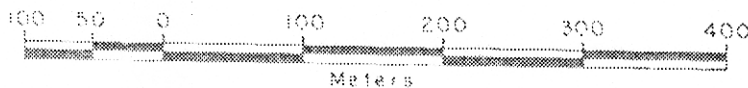
VA BELL SHOWING
(see Detail Mapping
/ CHRISTOPHER)



GEOLOGICAL BRANCH
ASSESSMENT REPORT

17,046

NOTE: Contour Interval 100 Feet



WESTRIM RESOURCES INC.
— BURNT BASIN PROPERTY —
GREENWOOD MINING DIVISION — BRITISH COLUMBIA

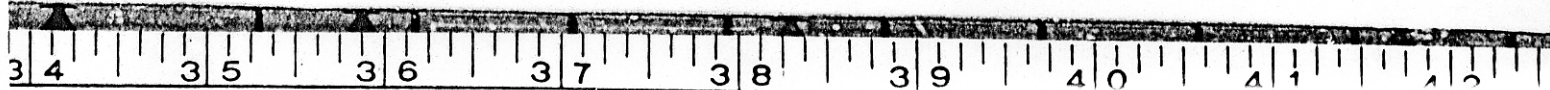
COMPILATION MAP

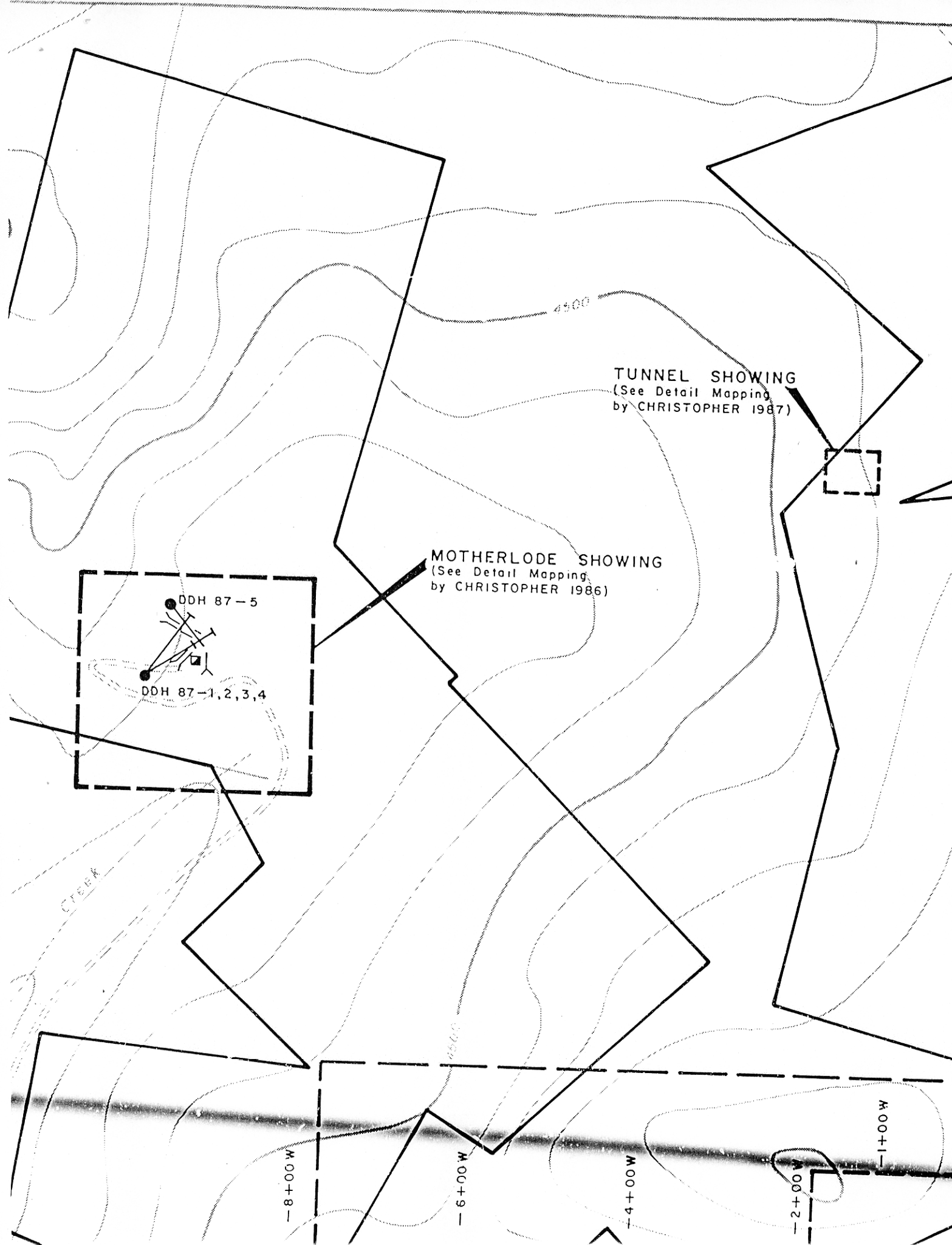
RAM EXPLORATIONS LTD.
VANCOUVER, B.C.

DWN BY T.M.
CHK BY
DATE JUNE, 1987

FIG No.

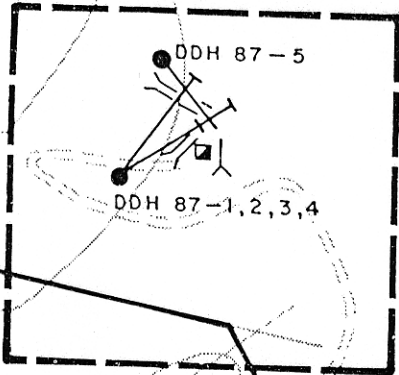
3





TUNNEL SHOWING
(See Detail Mapping
by CHRISTOPHER 1987)

MOTHERLODE SHOWING
(See Detail Mapping
by CHRISTOPHER 1986)



Creek

4500

4500

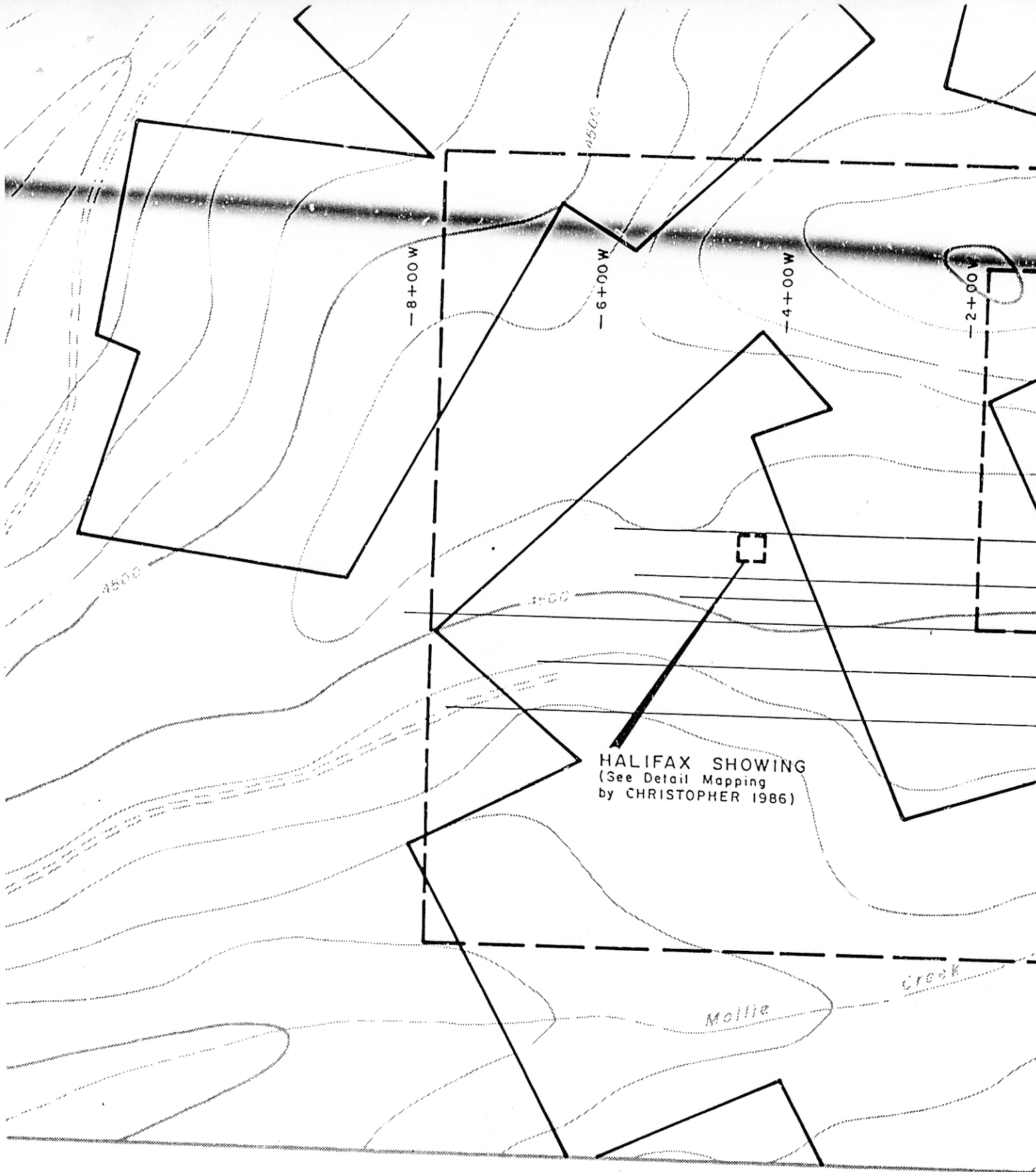
8+00 W

6+00 W

4+00 W

2+00 W

1+00 W



HALIFAX SHOWING
(See Detail Mapping
by CHRISTOPHER 1986)

