

5872

001341

A S S E S S M E N T R E P O R T

on

BEV AND TW CLAIMS AND LEASES

729 and 2879

GREENWOOD MINING DIVISION

BRITISH COLUMBIA. 82E/E½

LONGITUDE 118° 37' W

LATITUDE 49° 03' N

for

SILVER FALLS RESOURCES INC.

Department of
Mines and Petroleum Resources
ASSESSMENT REPORT

NO. 5872 MAP

by

James W. McLeod, B.Sc.

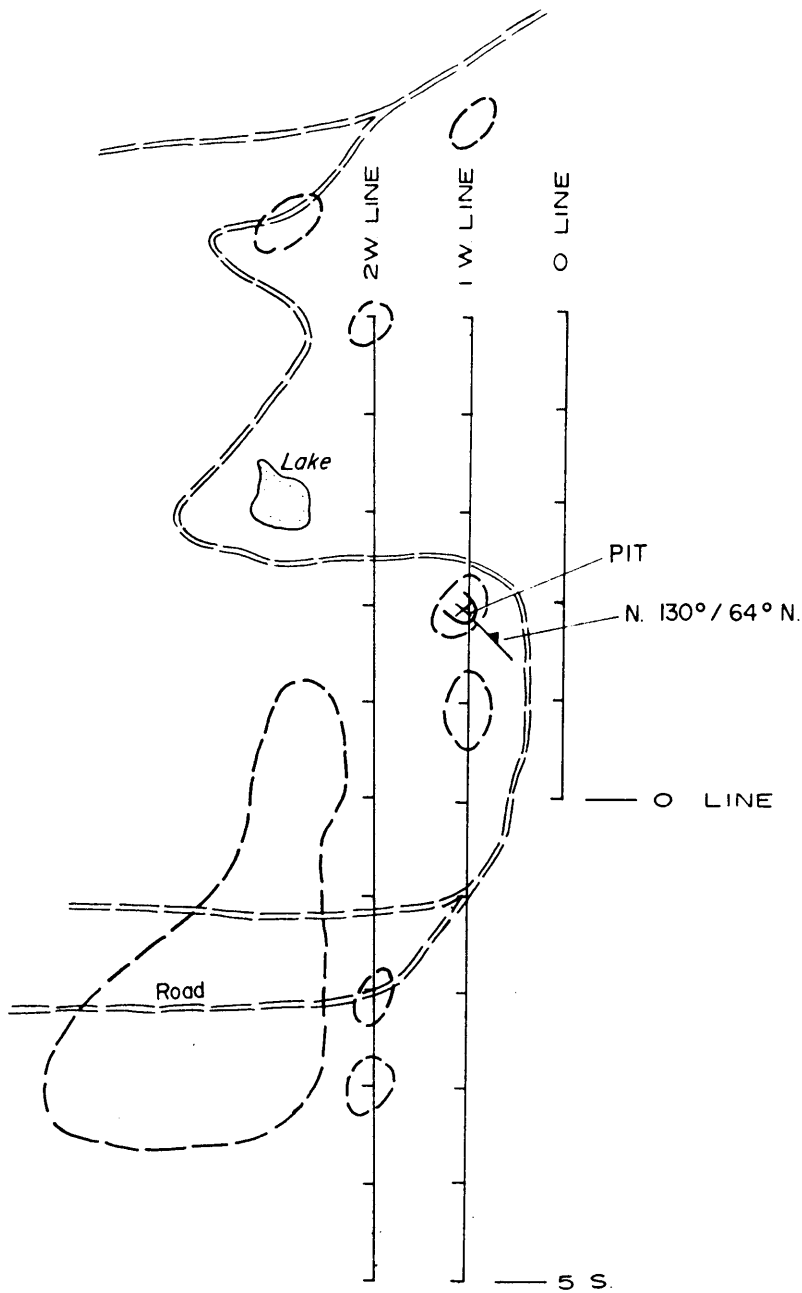
June 7, 1976.

TABLE OF CONTENTS

INTRODUCTION	1
LOCATION AND ACCESS	1
PROPERTY AND OWNERSHIP	1
TOPOGRAPHICAL AND PHYSICAL ENVIRONMENT	2
GEOLOGY	2
1. General	
2. Local	
MINERALIZATION	3
WORK PROGRAM	3
1. Physical Work	
2. Geology and Prospecting	
3. Geochemical Soil and Magnetometer Surveys	
GEOCHEMICAL SOIL AND MAGNETOMETER SURVEY METHODS	4
DISCUSSION OF DATA	5
COST OF PROGRAMS	6
PERSONNEL	7
CERTIFICATE	8

APPENDIX

1. GEOCHEMICAL SOIL AND ROCK SAMPLE RESULTS	I
2. MAGNETOMETER READINGS	2



LEGEND

... and dip of shear

... green, fine grained sediments

FIG. 5

SILVER FALLS RESOURCES LTD.
 BEV. NO. 2 CLAIM
 GEOLOGY, GEOCHEMICAL
 MAGNETOMETER GRID PLAN

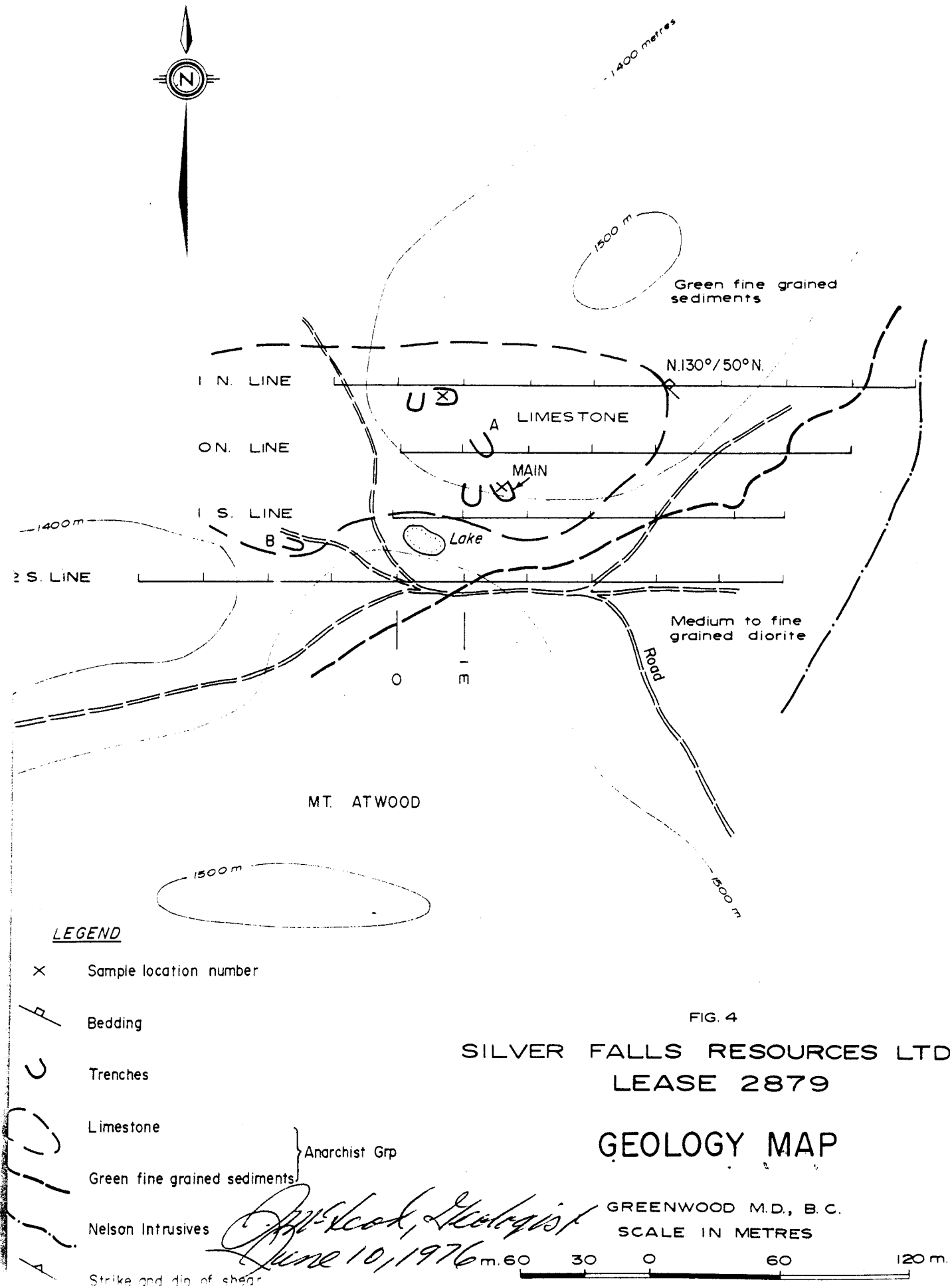
GREENWOOD M.D., B.C.

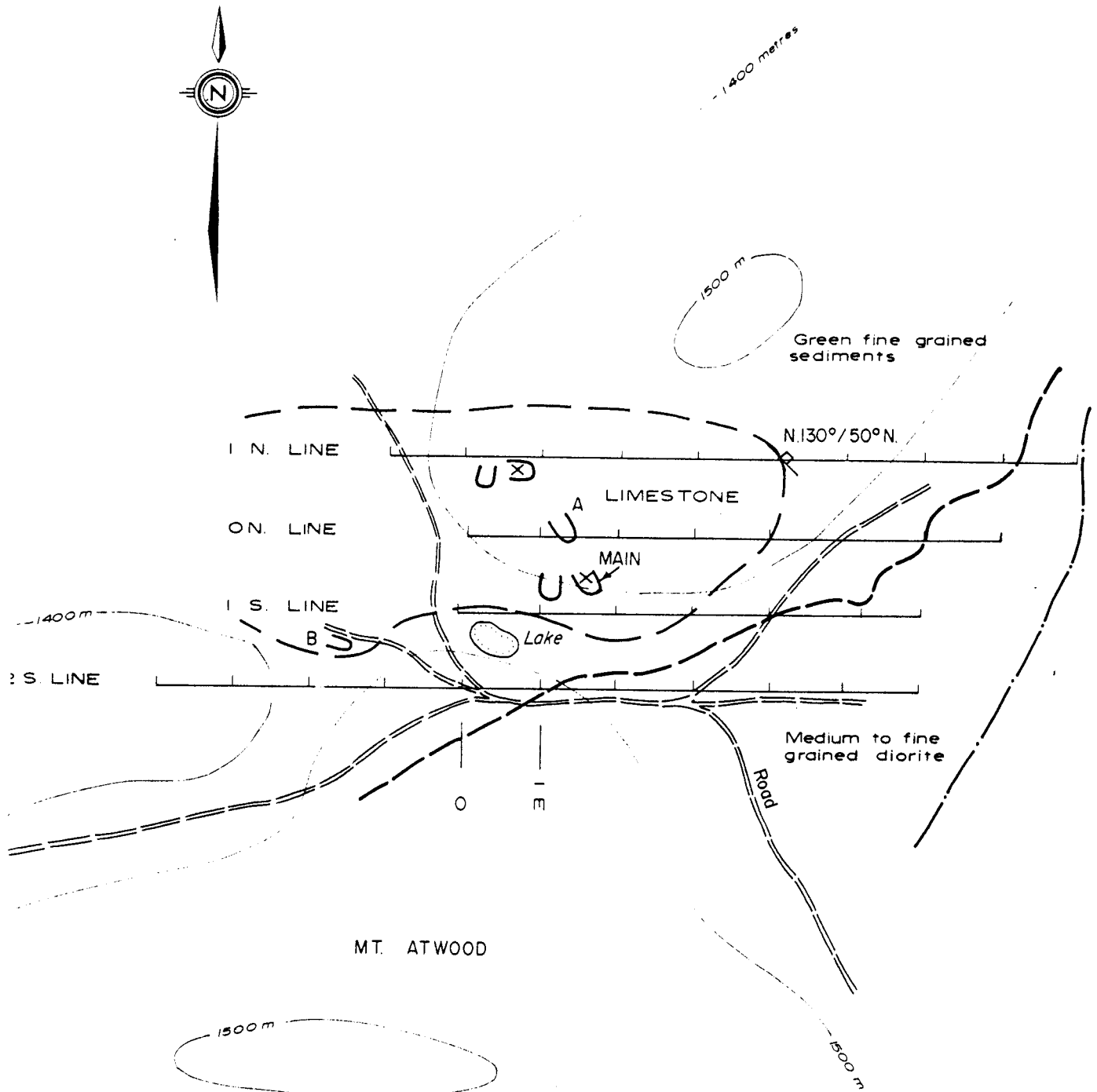
SCALE IN METRES



J. McLeod, Geologist
 June 10, 1976

Department of
 Mines and Petroleum Resources
 ASSESSMENT REPORT
 NO. 5872 MAP 3





LEGEND

- x Sample location number
- A Bedding
- C Trenches
- () Limestone
- () Green fine grained sediments } Anarchist Grp
- () Nelson Intrusives
- Strike and dip of shear

FIG. 4

SILVER FALLS RESOURCES LTD.
LEASE 2879

GEOLOGY MAP

GREENWOOD M.D., B.C.
SCALE IN METRES

John Wood, Geologist
June 10, 1976



RAILWAY LINE

GREENWOOD

ROAD

LINDSEY CREEK

PORTER CR



ATWOOD MTN



INTRODUCTION
 LOCATION
 PROPERTY AND
 TOPOGRAPHY
 GEOLOGY
 MINERALIZATION
 RESEARCH PROGRAM
 GEOCHEMICAL
 SUMMARY METHOD
 DISCUSSION
 COST OF PROGRAM
 PERSONNEL
 CERTIFICATE

1. GEOCHEMICAL
2. MAGNETOMETER

SILVER FALLS RESOURCES LTD

GROUP MAP

GREENWOOD, B.C.

W. L. ...
...
...

TABLE OF CONTENTS

INTRODUCTION	1
LOCATION AND ACCESS	1
PROPERTY AND OWNERSHIP	1
TOPOGRAPHICAL AND PHYSICAL ENVIRONMENT	2
GEOLOGY	2
1. General	
2. Local	
MINERALIZATION	3
WORK PROGRAM	3
1. Physical Work	
2. Geology and Prospecting	
3. Geochemical Soil and Magnetometer Surveys	
GEOCHEMICAL SOIL AND MAGNETOMETER SURVEY METHODS	4
DISCUSSION OF DATA	5
COST OF PROGRAM	6
PERSONNEL	7
CERTIFICATE	8

APPENDIX

1. GEOCHEMICAL SOIL AND ROCK SAMPLE RESULTS	I
2. MAGNETOMETER SURVEY	2

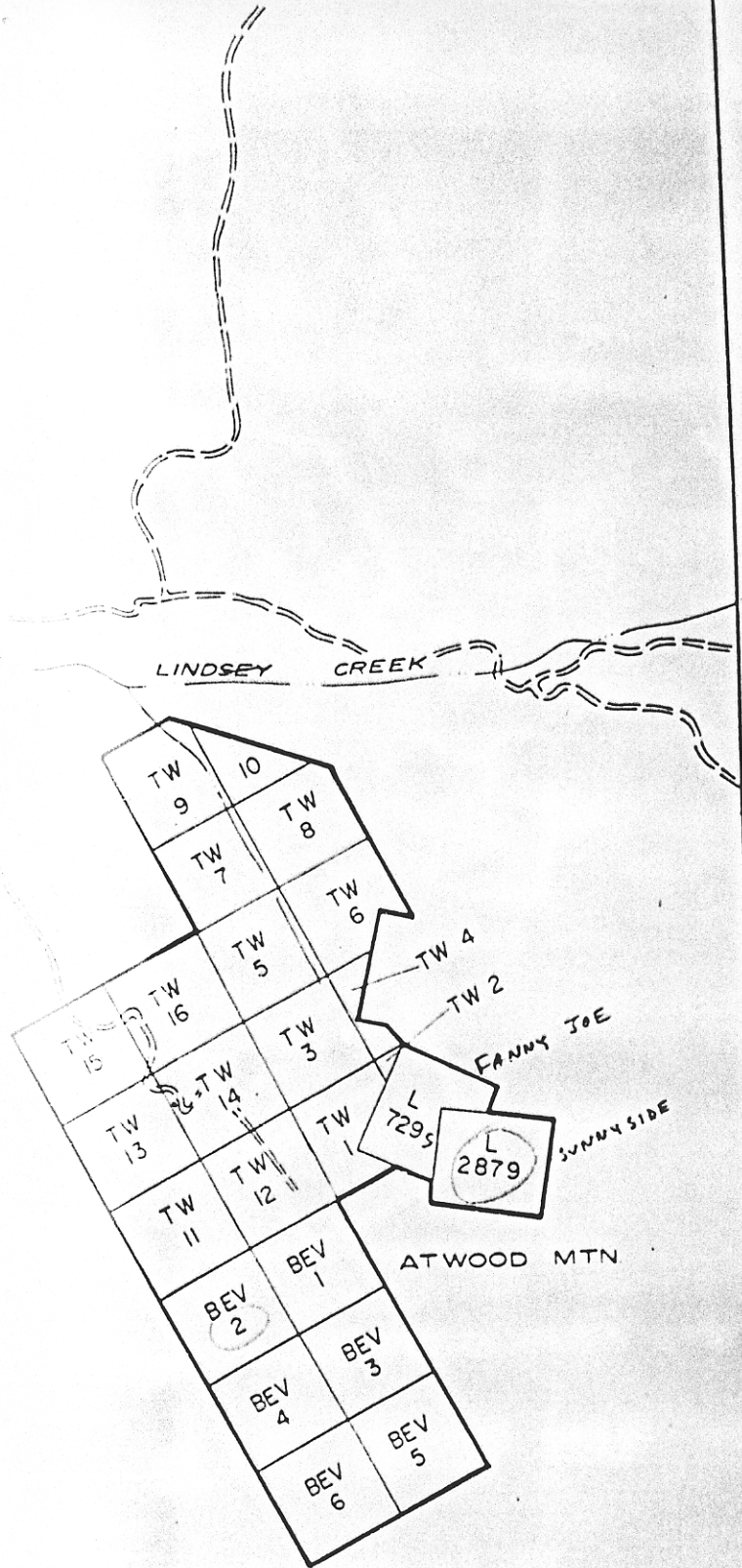


FIG 2

SILVER FALLS RESOURCES LTD.

CLAIM GROUP MAP

GREENWOOD M.D., B.C.

SCALE IN MILES



Handwritten signature and date: [Signature] 10/10/75

2. Geology and Prospecting

The areas where mineralization was found to occur were mapped and sampled.

The entire claim area was prospected.

3. Geochemical Soil and Magnetometer Surveys

The three areas where mineralization was encountered had 30 meter - spaced lines installed over them and geochemical soil samples and magnetometer readings were taken at 30 meter intervals along the lines (See Figures 3 and 5).

Geochemical Soil and Magnetometer Survey Method

A total of 62 soil and 5 rock samples were taken. All soil samples were taken from the 'B' soil horizon.

The samples were placed in brown kraft bags and taken to Vancouver Geochemical Laboratories Ltd., 1521 Pemberton Avenue, North Vancouver, B.C. V7P 2S3. The soil samples were dried and screened to 80 mesh and analyzed for copper, lead and gold (See Appendix I). The metals were brought into solutions by a standard method and subsequently analyzed on an atomic absorption unit.

The magnetometer used in the survey was a Geometrics - Model G110 unit. The stations are the same ones as used for the geochemical survey (See Figures 3 and 5 for the locations) and (Appendix II for the values).

the intrusive could be the cause of the replacement zones.

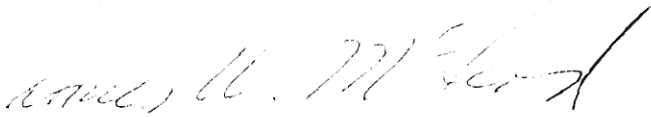
5.

DISCUSSION OF DATA

The two mineral showings marked "Pit A", 'Main' and 'Pit B' are sufficiently mineralized to warrant further investigation by possibly shallow diamond core drilling to see if they have any depth.

The geochemical soil survey and the magnetometer survey did not add lateral size to the areas of mineralization, therefore these types of surveys are not recommended for further use on this property.

Respectfully submitted


James W. McLeod, Geologist

TOPOGRAPHICAL AND PHYSICAL ENVIRONMENT

The property lies between 1200 meters and 1600 meters M.S.L. in rounded, moderately mountainous terrain. The south-facing slopes in this area are much more sparsely wooded with mainly coniferous trees.

The claim area experiences moderate precipitation.

GEOLOGY

1. GENERAL:

The general geology of the property as described by LITTLE, G.S.C. Map 6 - 1957, KETTLE RIVER, East Half, is as being underlain by Permian rocks assigned to the Anarchist Group. The rocks comprising the Anarchist Group at this location are greenstone, greywacke, limestone and paragneiss.

2. LOCAL

The rocks observed on the property are mainly sediments (Anarchist Group) and intruding fine to medium grained diorite which are probably phases of the Nelson Intrusives. The close proximity of the intrusive rocks to the areas of mineralization, mainly as replacement zones in the limestone, suggests an intimacy between these rock types, the intrusive could be the cause of the replacement zones.

MINERALIZATION

Three areas of mineralization were encountered. In each case the metallic minerals encountered were present in differing amounts.

1. Pyrite, minor chalcopyrite and sphalerite in a light green, siliceous sheared sediment, approximately 1.2 meters in width (See Figure 5), marked 'PIT'. This material was not assayed.
2. Galena, sphalerite, magnetite, chalcopyrite in a limestone zone. (See Figure 4), marked 'PIT A' and 'MAIN'.
3. Chalcopyrite, pyrrothite and minor arsenopyrite in a skarny, limestone zone (See Figure 4), marked 'PIT B'.

WORK PROGRAM

1. Physical Work

Both roads to the property were cleared and repaired to allow vehicle access. The work entailed clearing deadfalls and filling washouts. The trenches and pits were cleaned out and extended to allow examination and sampling.

FIGURES

- #1 1. Index Map
- 2 2. Claim Group Map
- 3 3. L. 2879 Geochemical and
Magnetometer Grid Plan
- 4 4. L. 2879 Geology Map
- 5 5. BEV #2 Geology, Geochemical and
Magnetometer Grid Plan

MINERALIZATION

Three areas of mineralization were encountered. In each case the metallic minerals encountered were present in differing amounts.

1. Pyrite, minor chalcopyrite and sphalerite in a light green, siliceous sheared sediment, approximately 1.2 meters in width (See Figure 5), marked 'PIT'. This material was not assayed.
2. Galena, sphalerite, magnetite, chalcopyrite in a limestone zone. (See Figure 4), marked 'PIT A' and 'MAIN'.
3. Chalcopyrite, pyrrhatite and minor arsenopyrite in a skarny, limestone zone (See Figure 4), marked 'PIT B'.

WORK PROGRAM

1. Physical Work

Both roads to the property were cleared and repaired to allow vehicle access. The work entailed clearing deadfalls and filling washouts. The trenches and pits were cleaned out and extended to allow examination and sampling.

2. Geology and Prospecting

The areas where mineralization was found to occur were mapped and sampled.

The entire claim area was prospected.

3. Geochemical Soil and Magnetometer Surveys

The three areas where mineralization was encountered had 30 meter - spaced lines installed over them and geochemical soil samples and magnetometer readings were taken at 30 meter intervals along the lines (See Figures 3 and 5).

Geochemical Soil and Magnetometer Survey Method

A total of 62 soil and 5 rock samples were taken. All soil samples were taken from the 'B' soil horizon.

The samples were placed in brown kraft bags and taken to Vancouver Geochemical Laboratories Ltd., 1521 Pemberton Avenue, North Vancouver, B.C. V7P 2S3. The soil samples were dried and screened to 80 mesh and analyzed for copper, lead and gold (See Appendix I). The metals were brought into solutions by a standard method and subsequently analyzed on an atomic absorption unit.

The magnetometer used in the survey was a Geometrics - Model G110 unit. The stations are the same ones as used for the geochemical survey (See Figures 3 and 5 for the locations) and (Appendix II for the values).

INTRODUCTION

From May 16 to May 26, 1976, a work program was conducted over the Bev 1 - 6, TW 1 - 16 mineral claims and leases 729 and 2879.

The work was carried out under the supervision of the writer and at the request of the directors of Silver Falls Resources Ltd., of Vancouver, B.C.

LOCATION AND ACCESS

The property is located 5.6 airkilometers at N.130° from Greenwood, B.C. on both the north and south - facing slopes of Attwood Mountain.

Access to the property may be gained by travelling approximately 19.7 Kilometers from Greenwood, B.C. on the gravel-surfaced, Lind Creek road or by travelling approximately 13 Kilometers on the gravel-surfaced McCarran Creek road.

PROPERTY AND OWNERSHIP

The property consists of the Bev 1 - 6 and TW 1 - 16 mineral claims and mineral leases 729 and 2879.

The group is owned by Silver Falls Resources Ltd. of Vancouver, B.C.

GREENWOOD

LINDSEY CREEK

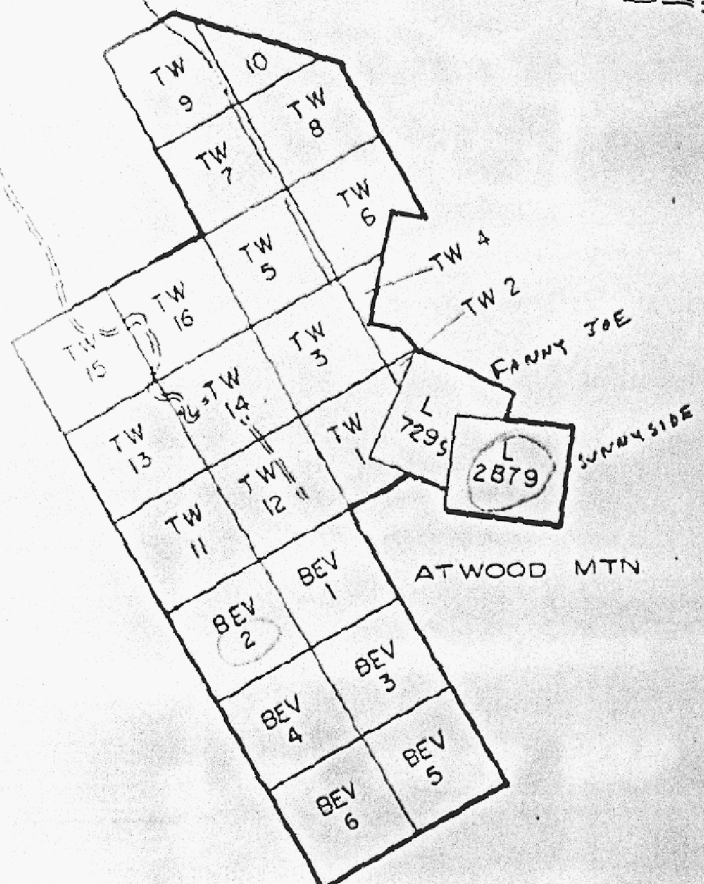


FIG 2

SILVER FALLS RESOURCES LTD.

CLAIM GROUP MAP

GREENWOOD M.D., B.C.

SCALE IN MILES



Silver Falls Resources Ltd
Trans on Bld 4
1974
56 808