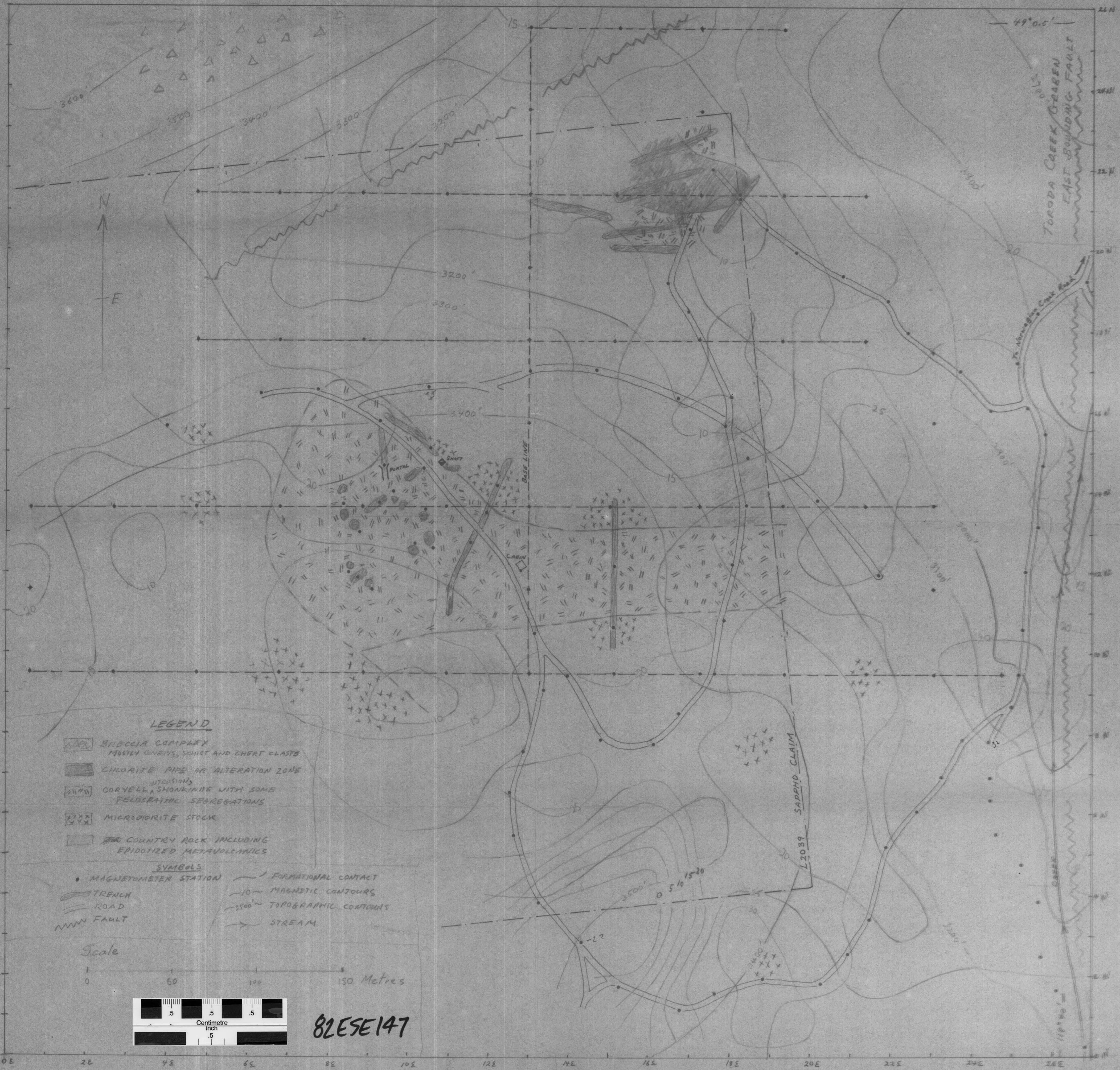


Fig. — MAGNETIC SURVEY OF THE SAPHO PROSPECT, BOUNDARY FALLS AREA

to
General
Feldman GAC
Oct 7/52



LEGEND

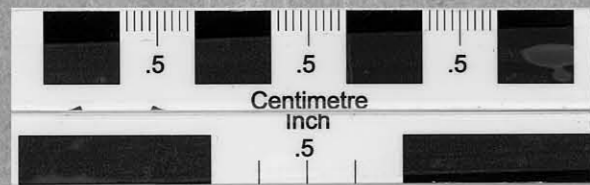
- BRECCIA COMPLEX
Mostly gneiss, schist and chert clasts
- CHLORITE PIPE OR ALTERATION ZONE
- CORVELLA, SHONKINITE WITH SOME
FELDSPATHIC SEGREGATIONS
- MICRODIORITE STOCK
- COUNTRY ROCK INCLUDING
EPIDOTIZED METAVOLCANICS

SYMBOLS

- MAGNETOMETER STATION
- STRELSA
- ROAD
- FAULT
- FORMATIONAL CONTACT
- MAGNETIC CONTOURS
- TOPOGRAPHIC CONTOURS
- STREAM

Scale

0 50 100 150 Metres



82ESE147