

TARGET AREA

KETTLE RIVER Sediments

Kettle River Sediments

QUARTZITE

QUARTZITE

Gdi

Kettle River Sediments

weak alteration

Gdi

Gdi

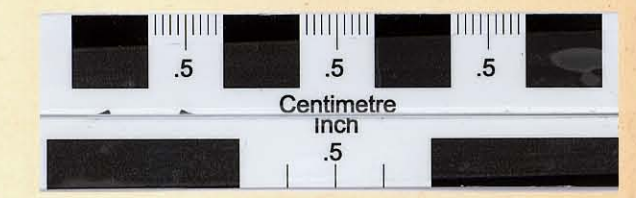
qtzite

Buckhorn Fault
qtzite

Strong Silicification of quartzite
Locally significant leaching

Locally qtzite is so altered as to be hydrothermal qtz & silice

Old fault zone
mineralized
structure collapsed



Legend

- Diamond or Percussion Drill Hole
- Fault
- - - Contact
- qtzite
- Kettle River Sediments
- GRANODIORITE
- weak alteration
- Strong
- SCALE 1" = 400'

001303

RMS JUL 51 76