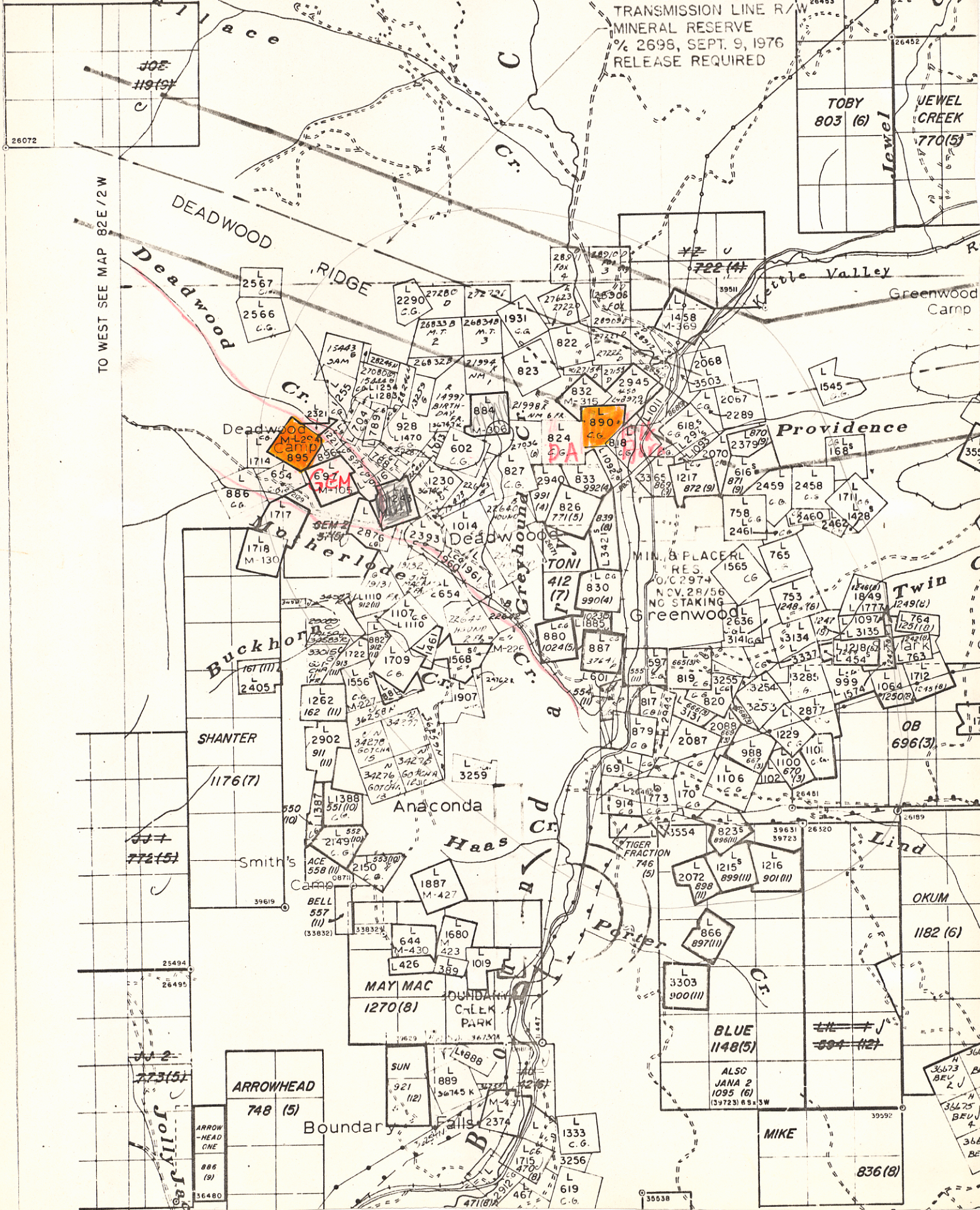


001291

PROPOSED NICOLA-SELKIRK
TRANSMISSION LINE R/W
MINERAL RESERVE
% 2698, SEPT. 9, 1976
RELEASE REQUIRED



TO WEST SEE MAP 82E/2W

TOBY
803 (6)

JEWEL
CREEK
770(5)

DEADWOOD
RIDGE
Deadwood
Cr.

Providence

Buckhorn

SHANTER

Anaconda

Smith's
Camp

MAY MAC
1270(8)

ARROWHEAD
748 (5)

Boundary Falls

MIN. & PLACER
RES.
NOV. 28/56
NO STAKING

Twin

OB
696(3)

Lind

OKUM

1182 (6)

BLUE
1148(5)

ALSO
JANA 2
1095 (6)
(39723) 65 3W

MIKE

836(8)

JOE
119(1)

ARROW-
HEAD
ONE
886
(9)
36480

36673
BEV
2 J
36475
BEV
4
3667
BEV
6