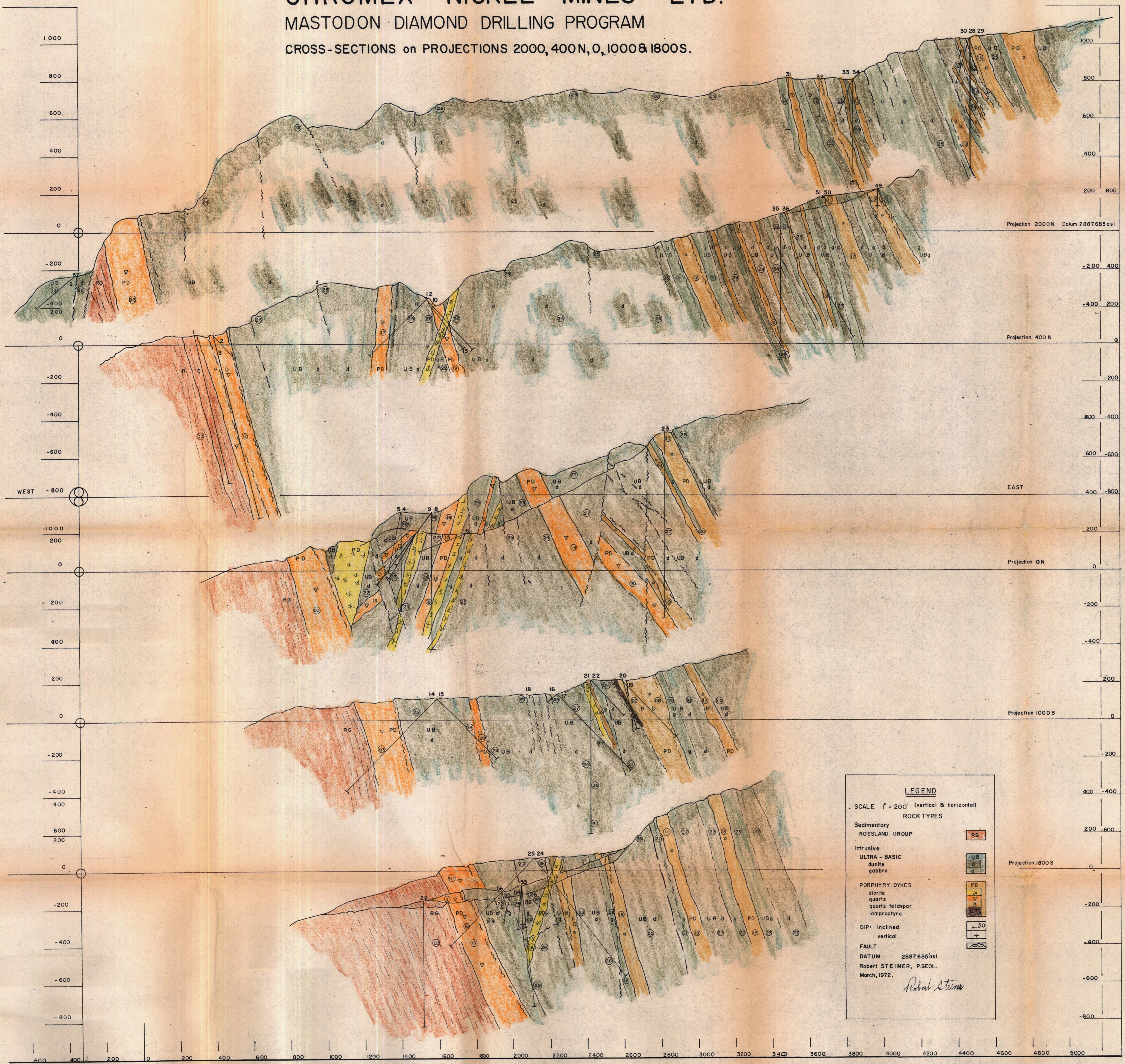


CHROMEX NICKEL MINES LTD.

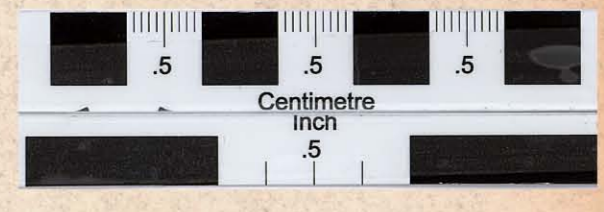
MASTODON DIAMOND DRILLING PROGRAM

CROSS-SECTIONS on PROJECTIONS 2000, 400 N, 0, 1000 & 1800 S.



| DDH | YEAR DRILLED | DIP | STRIKE | TERMINATED AT (ft) |
|-----|--------------|------|--------|--------------------|
| 1 | '67 | -75° | S66E | 791' |
| 2 | '67 | -45 | N89E | 172' |
| 3 | ' | -68 | N89E | 1008' |
| 4 | ' | -90 | 0 | 537' |
| 5 | ' | -45 | S16W | 425' |
| 6 | ' | -45 | N55W | 437' |
| 7 | ' | -45 | N55W | 361' |
| 8 | '68/71 | -90 | 0 | 76 (69) |
| 9 | '68 | -45 | N82W | 395' |
| 10 | ' | -90 | 0 | 198' |
| 11 | ' | -45 | N71W | 427' |
| 12 | ' | -45 | S71W | 374' |
| 13 | ' | -45 | N70E | 240' |
| 14 | ' | -45 | S83W | 691' |
| 15 | ' | -45 | N83E | 442' |
| 16 | ' | -45 | S85W | 67' |
| 17 | ' | -45 | N85E | 579' |
| 18 | ' | -45 | N45E | 20' |
| 19 | '69 | -45 | E | 420' |
| 20 | ' | -45 | N15E | 357' |
| 21 | ' | -90 | 0 | 809' |
| 22 | ' | -45 | N67E | 261' |
| 23 | ' | -90 | 0 | 987' |
| 24 | ' | -51 | S73E | 812' |
| 25 | ' | -45 | N75W | 663' |
| 26 | '70 | -45 | N84E | 153' |
| 27 | ' | -90 | 0 | 670' |
| 28 | ' | -90 | 0 | 690' |
| 29 | ' | -45 | N20E | 414' |
| 30 | ' | -52 | S20W | 300' |
| 31 | ' | -90 | 0 | 273' |
| 32 | ' | -90 | 0 | 201' |
| 33 | ' | -45 | N23W | 258' |
| 34 | ' | -90 | 0 | 544' |
| 35 | ' | -45 | N75W | 921' |
| 36 | ' | -90 | 0 | 774' |
| 37 | ' | -42 | N42W | 228' |
| 49 | '71 | -45 | S74E | 125' |
| 50 | ' | -45 | N52E | 63' |
| 51 | ' | -90 | 0 | 10' |
| 52 | ' | -45 | S05E | 914' |
| 53 | ' | -90 | 0 | 207' |
| 54 | ' | -45 | N06W | 329' |
| 55 | ' | -45 | S80E | 144' |
| 56 | ' | -90 | 0 | 82' |

Average NICKEL content in O₂% = 2.3 per section.
 Compressive Strength (p.s.i.) Ore 13,320
 Dykes 21,270
 "MCH" Hardness Ore 4.5
 Dykes 5.0
 Average Specific Gravity Ore 3.15
 Lbs./cu.ft. 197
 Cu.ft./ton (stn) 10.1



LEGEND

SCALE 1" = 200' (vertical & horizontal)

ROCK TYPES

Sedimentary
 ROSSLAND GROUP RG

Intrusive
 ULTRA - BASIC
 danite UB
 gabbro d

PORPHYRY DYKES
 diorite PD
 quartz q
 quartz feldspar qf
 lamprophyre l

DIP: inclined -50
 vertical +

FAULT =

DATUM 2887.685'asi
 Robert STEINER, P.GEOL.
 March, 1972.
Robert Steiner