



- NOTES**
1. Topographical & Mine Openings Surveys by Noranda Explorations & West Coast Resources Ltd.
  2. Grid Survey by Noranda Explorations.
  3. Diamond Drill Holes #N-1 to N-21 inclusive and M-1 & M-2 by Noranda Explorations.
  4. Diamond Drill Holes WC, T & XR by West Coast Resources Ltd.
  5. Geomag Anomaly Outline by Husky Industries & Services Ltd, Sept. 1964.
  6. Self Potential Anomaly Outline by Noranda Explorations, Sept. 1956.
  7. Samples & Assays by Noranda Explorations and West Coast Resources Ltd. & OD Samples by Oro Denoro.

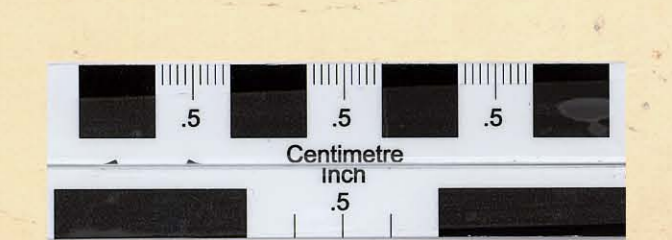
- SYMBOLS**
- Geomag Survey Outline.
  - Self Potential Survey Outline.
  - Diamond Drill Hole.
  - Ore Section - Assay Feet/% Copper other minerals not reported.
  - Mine Openings or Works.
  - Surface Trenches.
  - Open Pit Outlines.
  - 3440 ft. Level Workings.
  - 3500 ft. Level Workings.
  - Ore Chutes.
  - Wings.
  - Shafts.

**GEOLOGICAL LEGEND**

FORMATION	ROCK TYPE
Midway	Basic Dykes, Felsite, Phonolite, Basalt.
Kettle River	Arkose, Conglomerate, Shale.
Lion Creek	Quartz-diorite and Diorite.
Intrusive	Granodiorite, Quartz-Monzonite, Grano-diorite, Syenite.
Emma Intrusive	Granodiorite, Quartz-Monzonite, Grano-diorite, Syenite.
Atwood Series	
Enolt	Undifferentiated pyroclastics, Agglomerate-Tuff, Breccia & Tuff pipes.
Brooklyn	Limestone, Chert Breccia.
Knob Hill	Chert, Andesite Tuff.
Skarn	Green & Brown Garnet, Cu-Au-Ag Min Bearing Formation.

HOLES MARKED IN RED TO BE DRILLED FIRST.

HOLES IN GREEN AFTER.



**WEST COAST RESOURCES LTD**  
NON PERSONAL LIABILITY

**WILLIAM J. WEYMARK, P.Eng.**  
CONSULTING ENGINEER  
WEST VANCOUVER, B.C.  
CANADA

**ORO DENORO MINING PROPERTY**  
**SURFACE PLAN-MINING WORKS & INVESTIGATIONS**

DATE: SEP 15/1966  
SUBMITTED BY: W.J.W.  
DRAWN: E.T.  
TRACED: E.T.

SCALE: 50ft. to lin.  
CHECKED: W.J.W.  
FILE NO: WC-1.  
CONTRACT: WC-1. 091213