

APPROXIMATE CLAIM
OUTLINES

(A')

HAAS
CREEK

10

15

FAULT

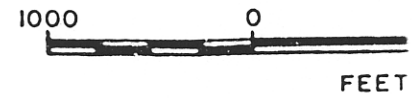
GEOLOGY

GSC PAPER 67-42

4 B_a W of FAULT Eocene ANDESITE & TRACHYANDESITE

2 CRETACEOUS

1 JURASSIC & PALEOZOIC



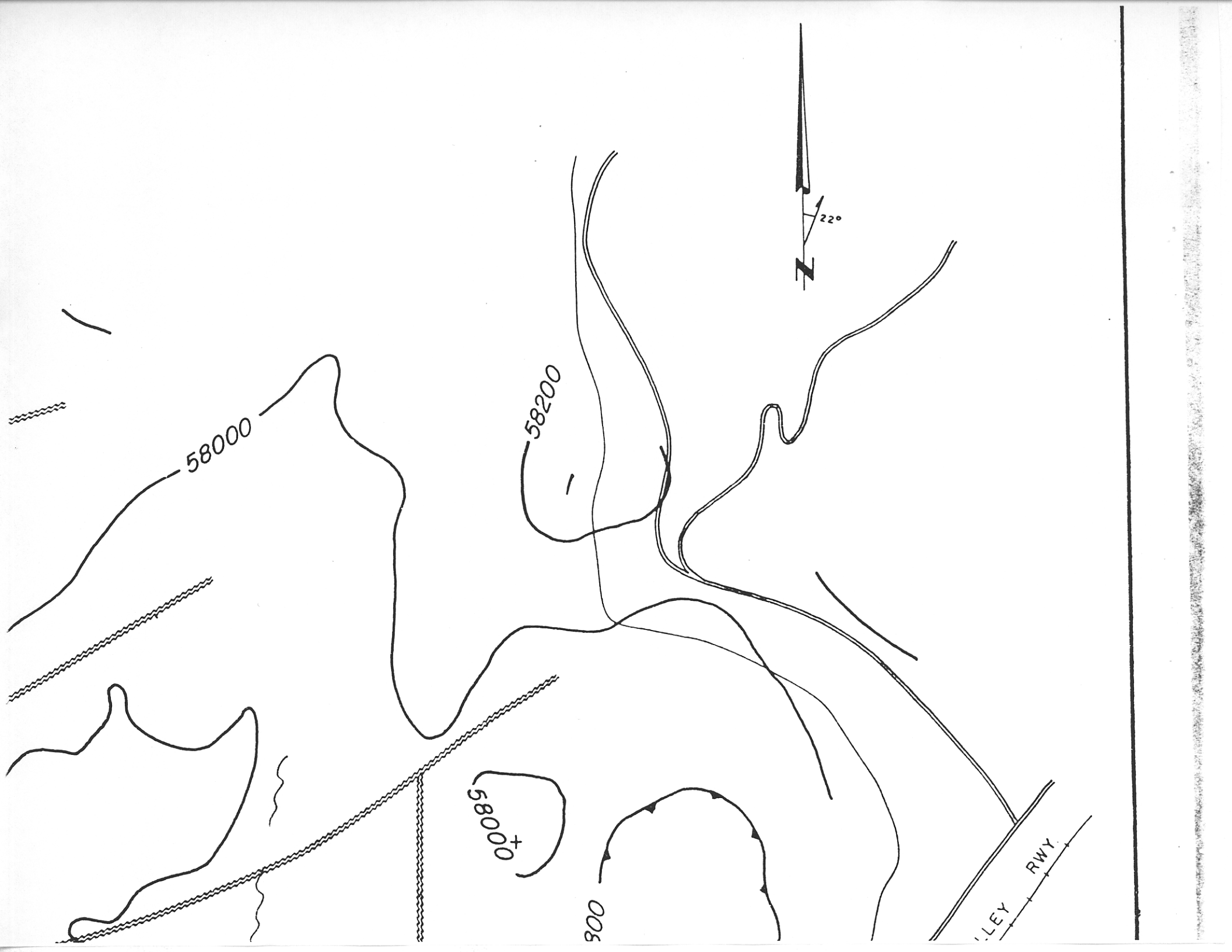
1978
Dona
Silver



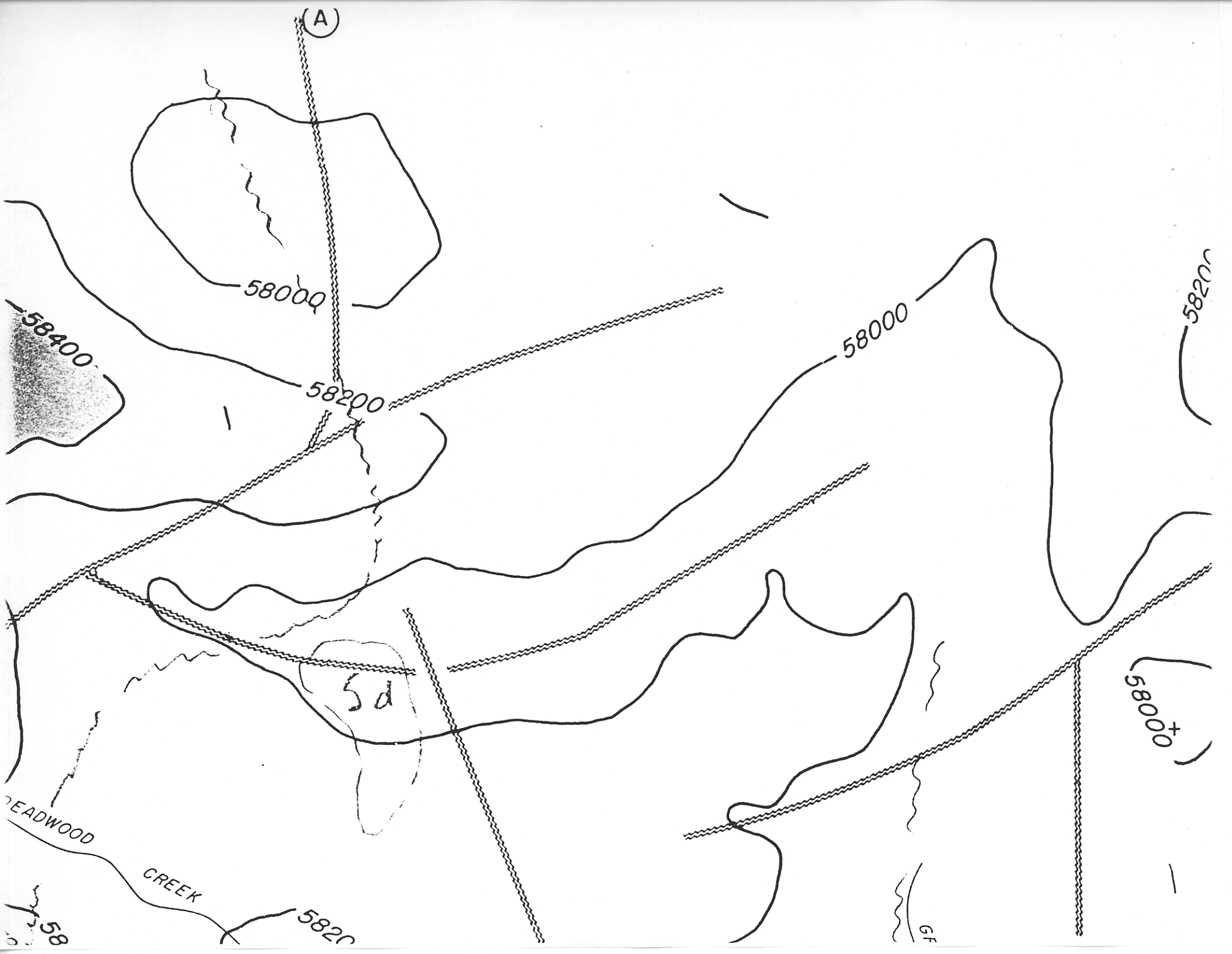
TO ACCOMPANY THE GEOPHYSICAL REPORT ON THE AEROMAGNETIC SURVEY OVER THE
CANADA DRY LITTLE DALLAS, COPPER COIN & LONE STAR GROUPS OF CLAIMS OWNED BY
CROWN SILVER/SILVER DOME MINES LTD.
BY DONALD R. COCHRANE, P. ENG. - JAMES CERNE & GLEN WHITE, GEOPHYSICISTS
VANCOUVER, BRITISH COLUMBIA



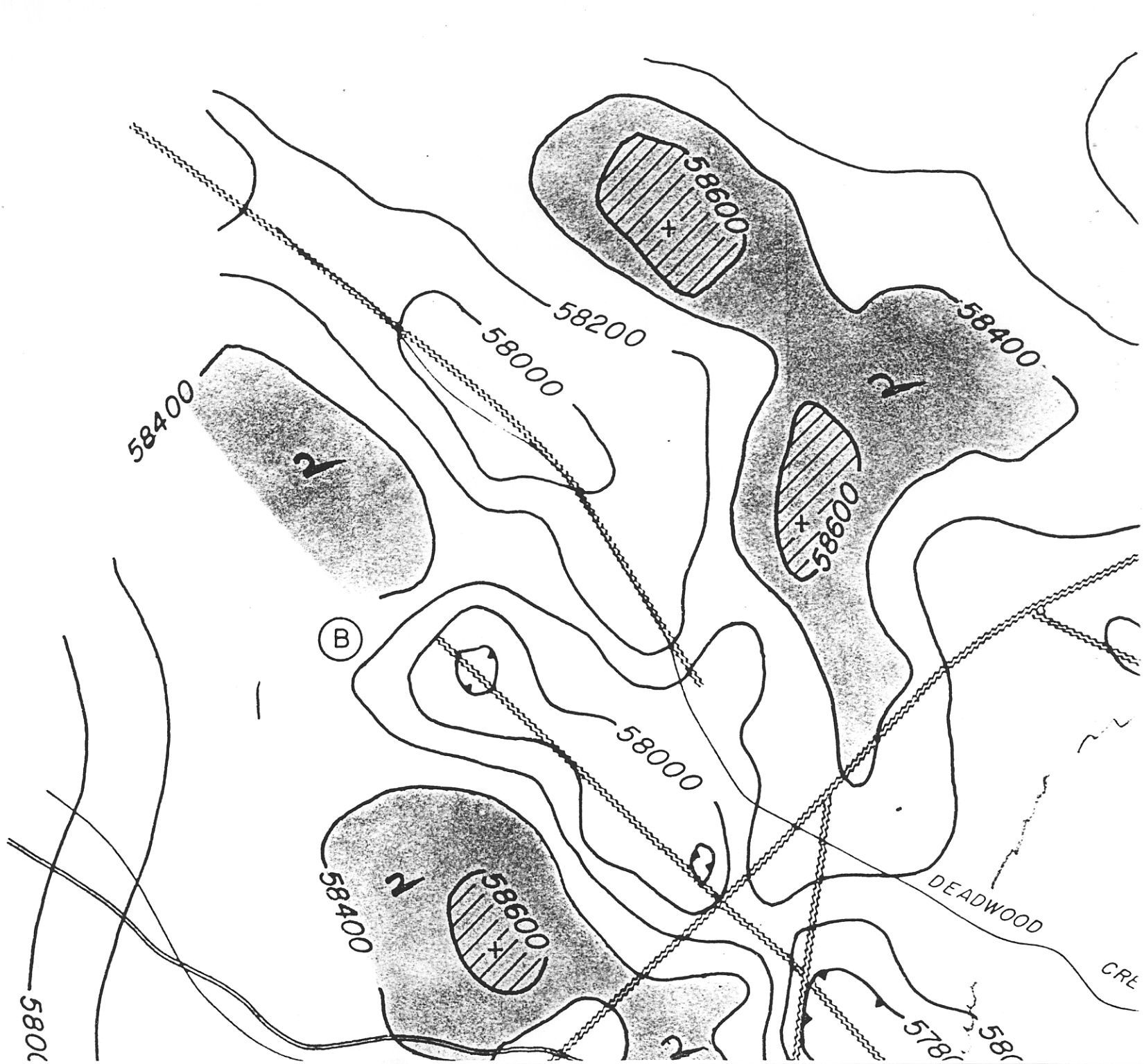
001156







20



15

58200

58200

10

57800

58000

58200

58200

58200
58400

58400

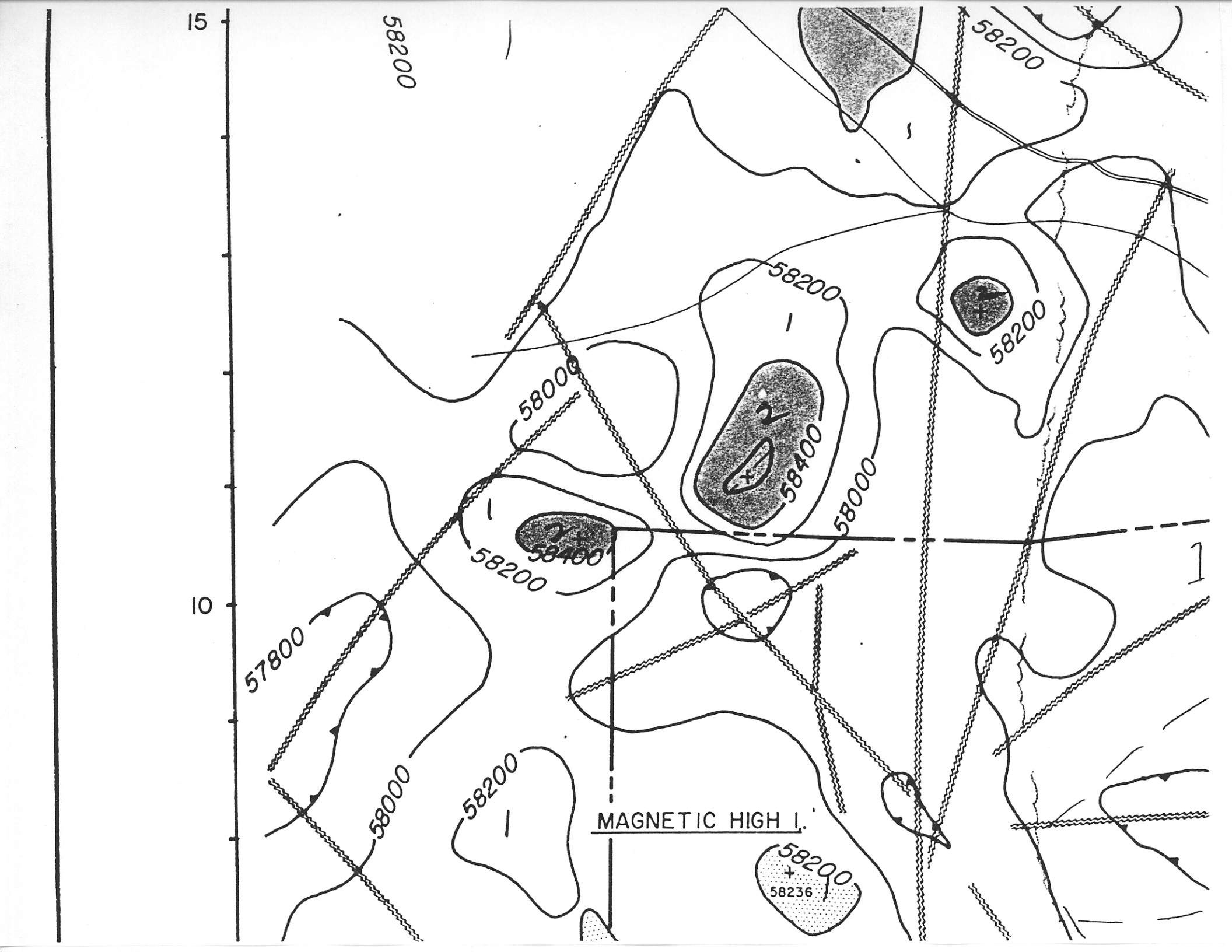
58000

58000

58200

MAGNETIC HIGH I.

58200
58236



APPROXIMATE CLAIM

OUTLINES

(A')

5

10

FAULT

4 B_a W of FAULT Eocene ANDESITE & TRACHYANDESITE

2 GRANODIORITE

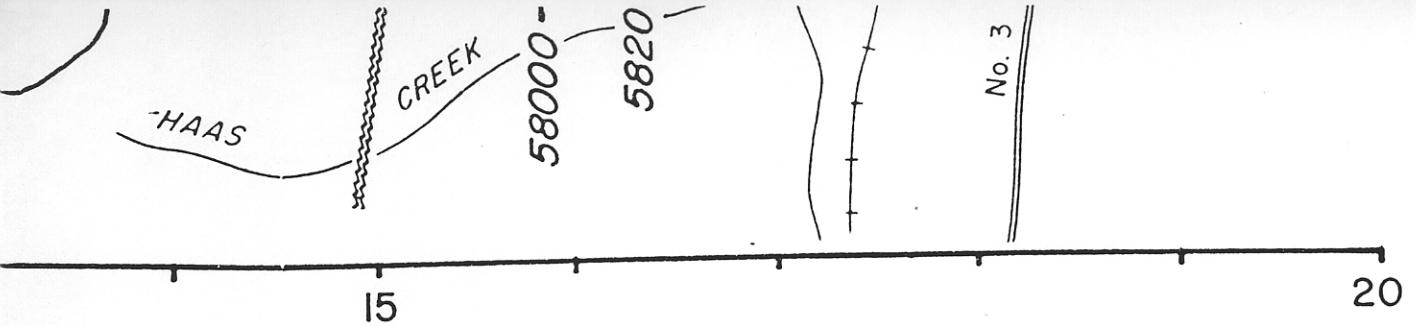
1 JURASSIC & PALEOZOIC

GEOL

GSC

100

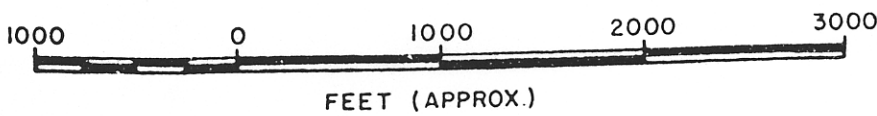
TO ACCOMPANY THE GEOPHYSICAL REPORT ON THE AEROMAGNETIC SURVEY OVER THE
CANADA DRY LITTLE DALLAS, COPPER COIN & LONE STAR GROUPS OF CLAIMS OWNED BY
CROWN SILVER/SILVER DOME MINES LTD.
BY DONALD R. COCHRANE, P. ENG. - JAMES CERNE & GLEN WHITE, GEOPHYSICISTS
VANCOUVER, BRITISH COLUMBIA



GEOLOGICAL
 SC PAPER 67-42

Department of
 Mines and Petroleum Resources
 ASSESSMENT REPORT
 NO. **1878** MAP **3**

1878



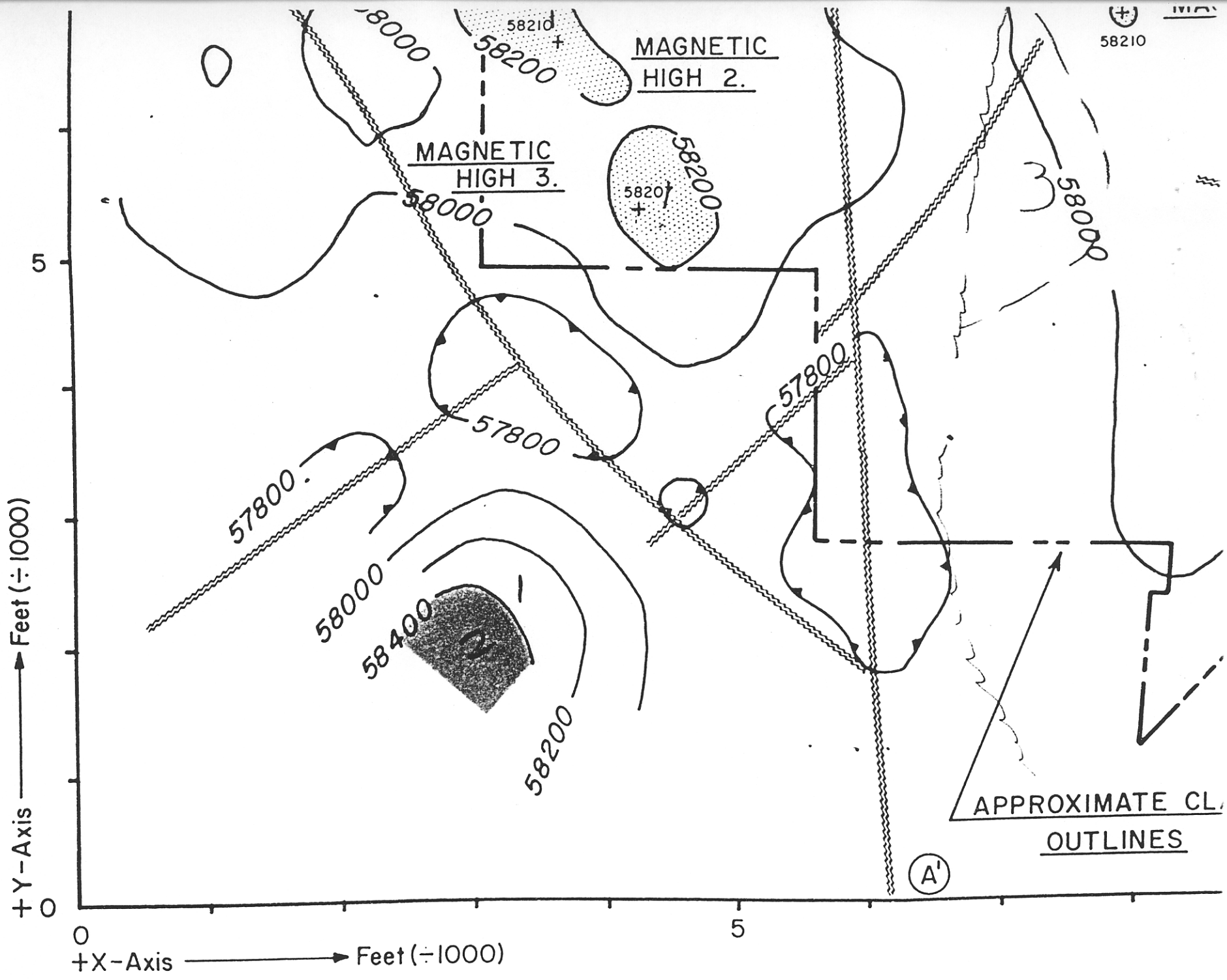
[Handwritten signature]
 PROFESSIONAL
 ENGINEER
 BRITISH COLUMBIA

CROWN SILVER/SILVER DOME MINES LTD.
 GREENWOOD AREA- GREENWOOD M.D.
 BRITISH COLUMBIA

GENERAL INTERPRETATION
 MAP

g GEO - X SURVEYS LTD.

| | | | |
|---------|--------------------|---------|----------|
| DRAWN | D.E.Y. & R.K. | JOB NO. | FIG. NO. |
| DATED | APRIL 21, 1969 | 1071 | 6 |
| CHECKED | <i>[Signature]</i> | | |



+ Y - Axis → Feet (÷1000)

+ X - Axis → Feet (÷1000)

MAGNETIC HIGH 2.

MAGNETIC HIGH 3.

APPROXIMATE CL. OUTLINES

58210

(A')

C-57800

57800

57800

58000

58400

58200

58000

58210
58200

58200

58200

58000

5

5

0

0

MAGNETIC HIGH 4.

⊕
58210

3
58000

2
58000

58000

APPROXIMATE CLAIM
OUTLINES

HAAS
CREEK
58085

(A')

10

15

