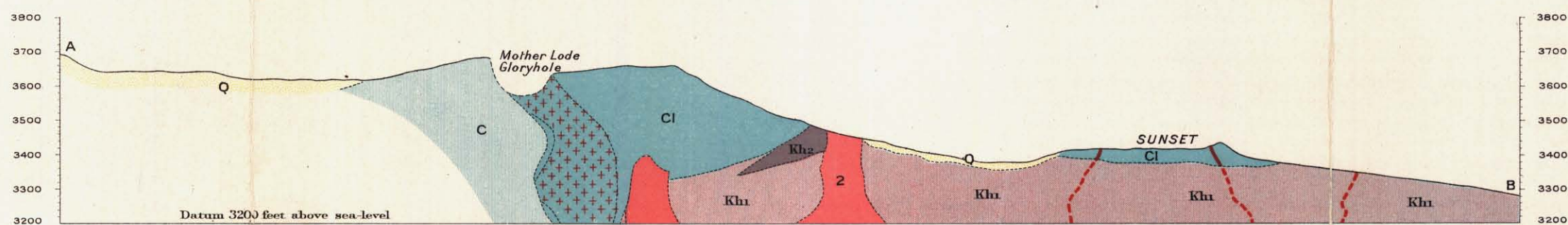


Canada  
Department of Mines  
GEOLOGICAL SURVEY

HON. W. B. NANTL, MINISTER; A. P. LOW, DEPUTY MINISTER;  
R. W. BROCK, DIRECTOR.

1911

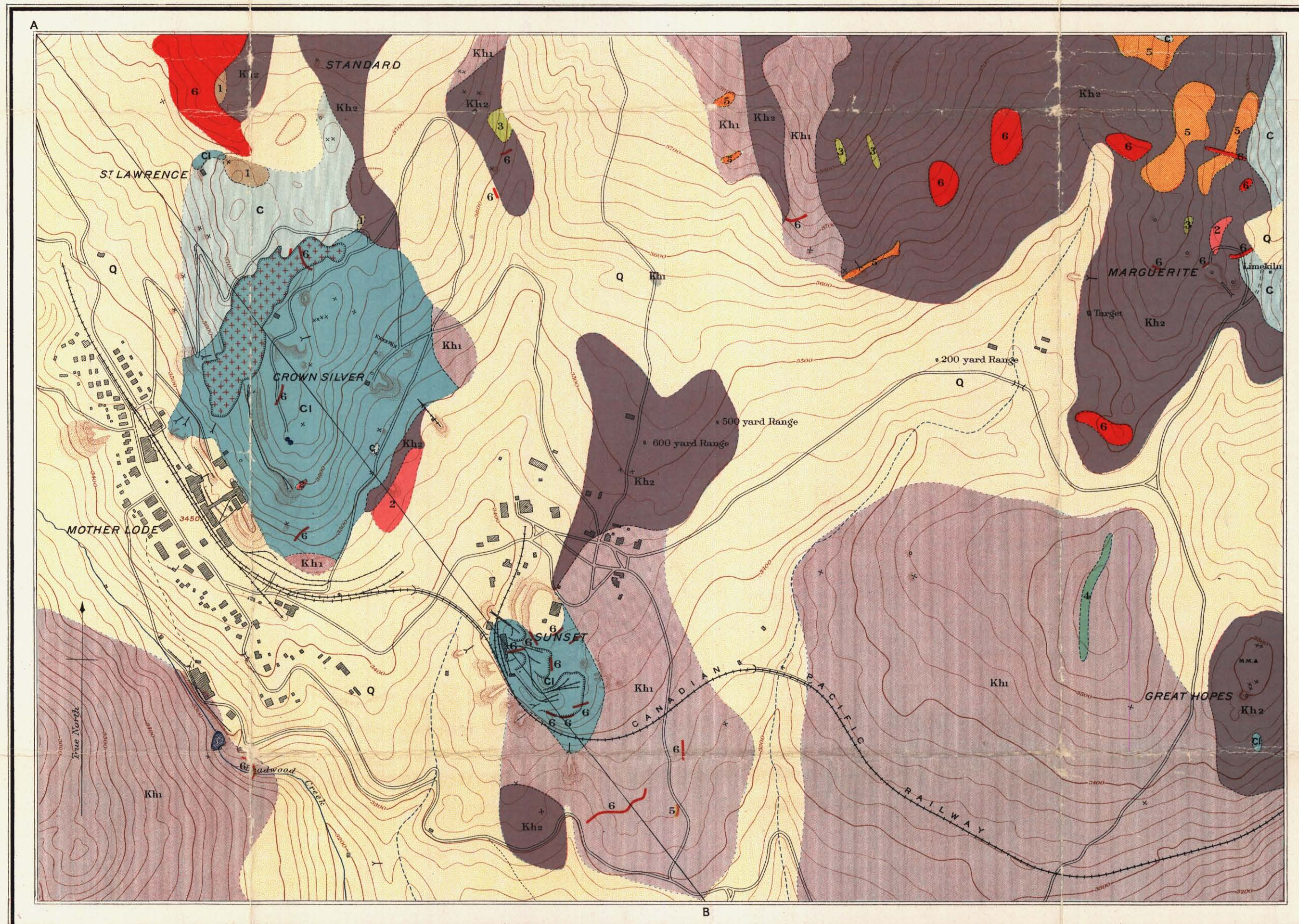


Structural section along line A B  
Scale, horizontal and vertical, 400 feet to 1 inch.

ECONOMIC GEOLOGY

BRITISH COLUMBIA

- LEGEND**
- QUATERNARY**
    - Q Clay, sand, gravel
  - TERTIARY**
    - MIOCENE (?)**
      - 6 Pulaskite porphyry
      - 5 Monzonite porphyry
    - MESOZOIC**
      - 4 Olivine basalt
      - 3 Hornblende porphyry
      - 2 Granodiorite
      - 1 Quartz porphyry
    - PALEOZOIC**
      - CARBONIFEROUS (?)**
        - Cl Brooklyn formation (metasediment zone)
        - C Brooklyn formation (crystalline limestone)
      - Kh2 Knob Hill group (jasperoid-tuff zone)
      - Kh1 Knob Hill group (chert-tuff zone)
  - Symbols**
    - Mother Lode ore body
    - Glacial striae
    - Geological boundary (delineated within an error of 20 feet)
    - Geological boundary (assumed)



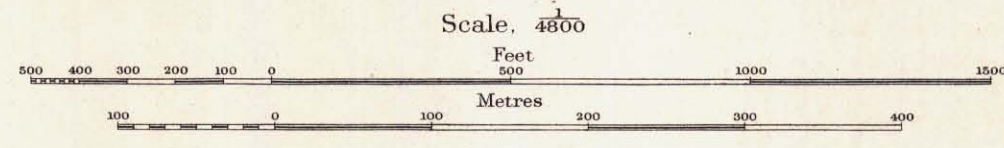
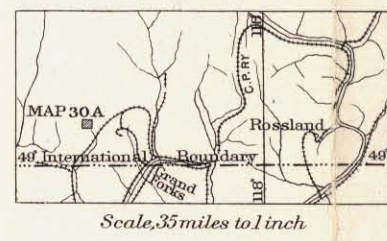
- LEGEND**
- Culture**
    - Roads and buildings
    - Roads not well defined
    - Railways
    - Trails
    - Mine tramways
    - Elevated tramways
    - Bridges
    - Shaft houses
    - Shafts
    - Tunnels
    - Prospects
    - Dams
  - Culture (Continued)**
    - Water tanks
    - Crib work
    - Mineral monuments
    - Glory holes
    - Water
    - Streams and ponds
    - Watercourses with intermittent flow
    - Relief
    - Contours (showing land forms and elevations above sea level, Interval 20 feet)
    - Depression contours
    - Mine dumps
    - Figures showing heights in feet above sea level

C. O. Senecal, Geographer and Chief Draughtsman.  
S. G. Alexander, and U. E. Prudhomme, Draughtsmen.

MAP 30 A

**MOTHER LODGE AND SUNSET MINES**  
DEADWOOD  
BRITISH COLUMBIA

**GEOLOGY**  
O. E. LEROY, (ECONOMIC) 1910.  
C. W. L'RYSDALE, (AREAL) 1910.  
**TOPOGRAPHY**  
W. H. BOYD, (IN CHARGE) 1910.  
W. E. LAWSON, 1910.  
A. C. T. SHEPPARD, 1910.



400 FEET TO 1 INCH



001104

82 E/2 SE

MOTHER LODGE 82E5034-06  
SUNSET MINES 035

To accompany Memoir No. 19