

6006251/100

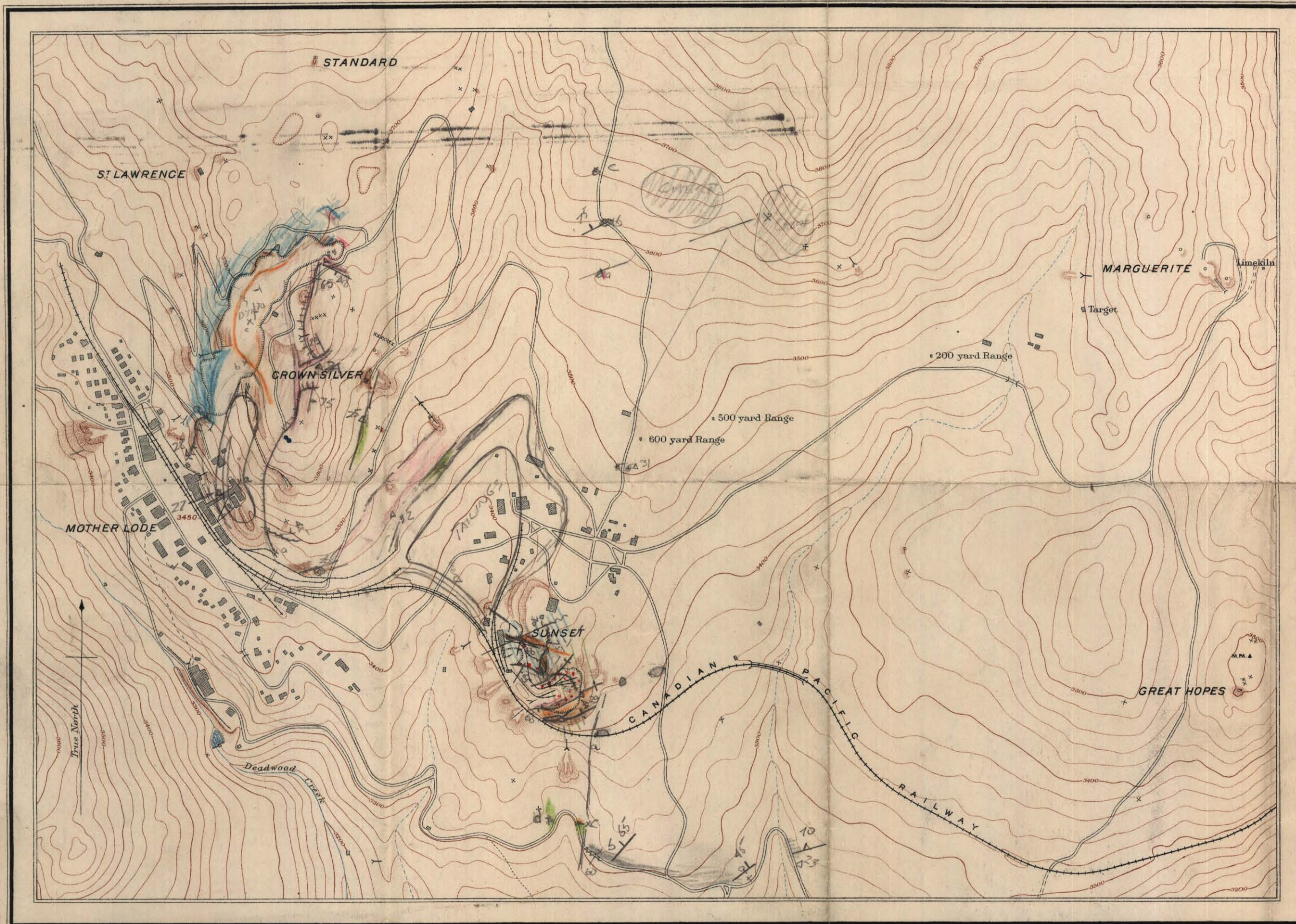
Canada
Department of Mines
GEOLOGICAL SURVEY

HON. W. TEMPLEMAN, MINISTER; A. P. LOW, DEPUTY MINISTER;
R. W. BROCK, DIRECTOR.

1911

TOPOGRAPHY

BRITISH COLUMBIA



LEGEND

Culture	Culture (Continued)
Roads and buildings	Water tanks
Roads not well defined	Crib work
Railways	Mineral monuments
Trails	Glory holes
Mine tramways	Water
Elevated tramways	Streams and ponds
Bridges	Watercourses with intermittent flow
Shaft houses	Relief
Shafts	Contours <i>(showing land forms and elevations above sea-level.)</i> Interval 20 feet
Tunnels	Depression contours
Prospects	Mine dumps
Dams	3450 Figures showing heights in feet above sea-level

Determination of contours based on elevation of C.P.R. at Mother Lode mine.

C. O. Senecal, Geographer and Chief Draughtsman.
S. G. Alexander, and O. E. Prudhomme, Draughtsmen.

MAP 29 A

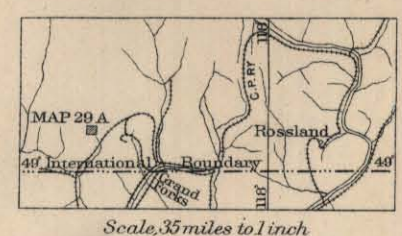
MOTHER LODGE AND SUNSET MINES
DEADWOOD
BRITISH COLUMBIA

Scale. 4800



400 FEET TO 1 INCH

PROPERTY FILE



TOPOGRAPHY
W. H. BOYD, (IN CHARGE) 1910.
W. E. LAWSON, 1910.
A. C. T. SHEPPARD, 1910.

Library
Dept. of Mines &
Petroleum Resources
Victoria, B. C.

To accompany Memoir No. 19

001101
Motherlode
82E SED34
PROPERTY FILE