

18545-4.5 - Muck -0.01
 18544-4.5 - Muck -0.03
 18542-5.5 - Muck -0.04
 18541-4.0 - Muck -0.03
 18540-4.5 - Muck -0.04
 18539-5.0 - Muck -0.01
 18538-4.5 - Muck -0.03
 18536-4.5 - Muck -0.03
 18535-5.0 - Muck -0.03

18543-1.4 - Qtz -0.02
 18537-0.8 - Qtz -0.04

18721-0.8 - Qtz -0.28
 18720-7.0 - Qtz 80% -0.14 E Wall
 18719-6.0 - Qtz + Sch -0.28 E Wall
 18718-5.0 - Qtz + Sch -0.04 E Wall
 18717-2.0 - Qtz -0.18
 18716-5.0 - Qtz -0.14

18534-4.0 - Muck -0.02
 18533-4.0 - Muck -0.04
 18532-4.5 - Muck -0.01
 18531-4.5 - Muck -0.01
 18514-5.0 - Muck -0.01
 18513-5.0 - Muck -0.02
 18511-4.5 - Muck -0.03
 18509-4.0 - Muck -0.02
 18507-6.0 - Muck -0.03
 18506-6.0 - Muck -0.02
 18503-4.4 - Muck -0.02
 18501-5.8 - Muck -0.04
 18512-5.0 - Muck 3% Qtz -0.04
 18510-5.0 - Muck 23% Qtz -0.10
 18748-5.0 - Muck -0.02
 18746-5.0 - Muck -0.02
 18740-6.0 - Muck 30% Qtz -0.20
 18736-5.0 - Muck 30% Qtz -0.20
 18735-4.4 - Muck 50% Qtz -0.18
 18734-5.0 - Muck -0.24
 18732-4.5 - Muck (Qtz) -0.04
 18730-4.7 - Muck -0.02
 18729-5.0 - Muck -0.06
 18727-4.6 - Muck -0.01
 18726-5.9 - Muck -0.12
 18725-5.3 - Muck -0.16
 18723-5.1 - Muck -0.02
 18722-4.8 - Muck -0.02
 18721-5.0 - Muck -0.01

18704-5.0 - Muck -0.02
 18703-5.0 - Muck -0.01
 18702-5.0 - Muck -0.01
 18701-5.0 - Muck -0.04
 20350-5.0 - Muck -0.04
 18710-0.3 - Qtz -0.20
 18707-1.5 - Qtz -0.08
 18706-1.8 - Qtz -0.32
 18705-1.0 - Qtz -0.20
 20349-5.0 - Muck -0.04
 20348-4.6 - Muck -0.02
 20347-4.5 - Muck -0.04
 18709-1.0 - Qtz -0.20
 18708-0.6 - Qtz -0.02
 20346-4.5 - Sch + Qtz -0.03
 20344-5.0 - Sch -0.02
 20345-0.8 - Qtz -0.18
 20340-5.0 - Muck -0.04
 20339-4.4 - Sch + Qtz -0.14
 20338-6.5 - Qtz + Sch -0.29
 20337-3.7 - Sch + Qtz -0.12
 20318-1.0 - Qtz -0.32
 20317-2.0 - Sch + Qtz -0.02
 20316-0.8 - Qtz -0.44
 20315-2.4 - Sch + Qtz -0.32
 20314-1.0 - Qtz + Sch -0.24
 20313-2.3 - Sch + Qtz -0.16
 20312-4.0 - Sch + Qtz -0.04

18508-4.0 - Muck -0.01
 18506-4.0 - " -0.01
 18504-6.1 - " -0.06
 18502-6.2 - " -0.04
 18730-6.0 - " -0.03
 18747-4.5 - " -0.52
 18745-4.0 - " -0.32
 18744-5.0 - " -0.08

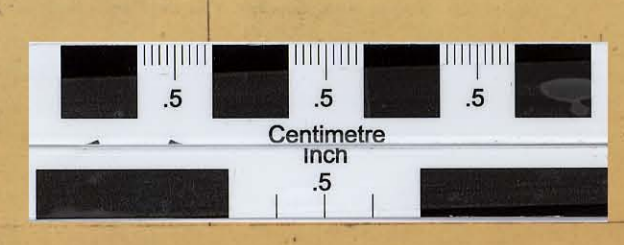
18743-5.0 - Sch + Qtz -0.06 S Wall
 18742-5.0 - Sch + Qtz -0.03 N Wall
 18741-5.0 - Sch + Qtz -0.08 N Wall

20343-5.0 - Sch + Qtz -0.01
 20339-4.0 - Sch + Qtz -0.03
 20334-4.0 - Sch + Qtz -0.04
 20333-5.0 - Sch + Qtz -0.04
 20332-4.8 - Qtz -0.10
 20331-1.8 - Qtz -0.04

- Soft light grey schist
- Dark siliceous argillite, some included pyrite
- Grey siliceous schist, part banded with dark + light bands
- Dark tough argillite with included pyrite

SNOWSHOE GOLD MINES LTD
**INTERMEDIATE
 LEVEL**

Scale 1" = 20' Feb. 28 - 42



001083
 61567 4200

61567

61567

Handwritten notes and scribbles at the bottom left corner.