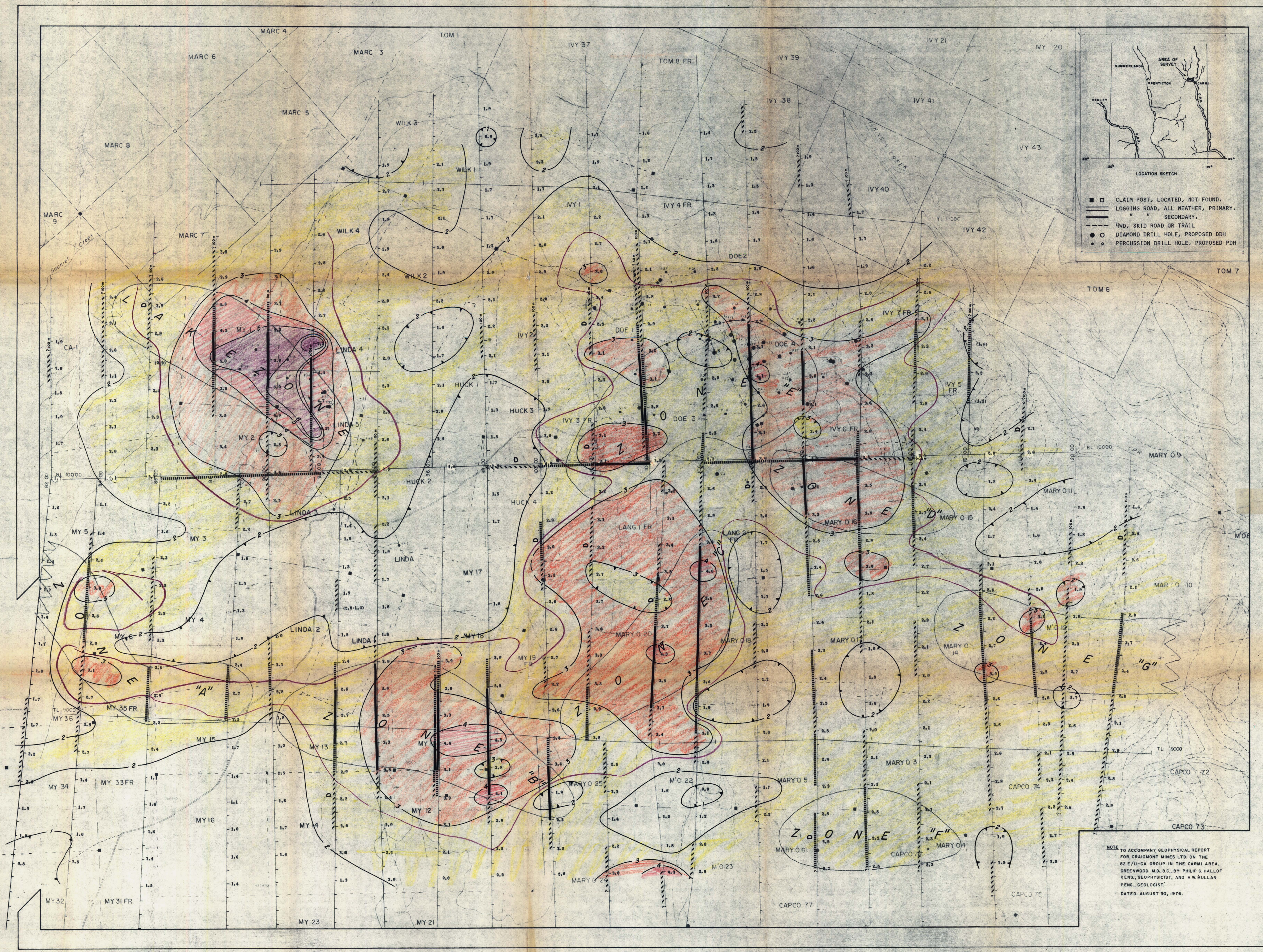
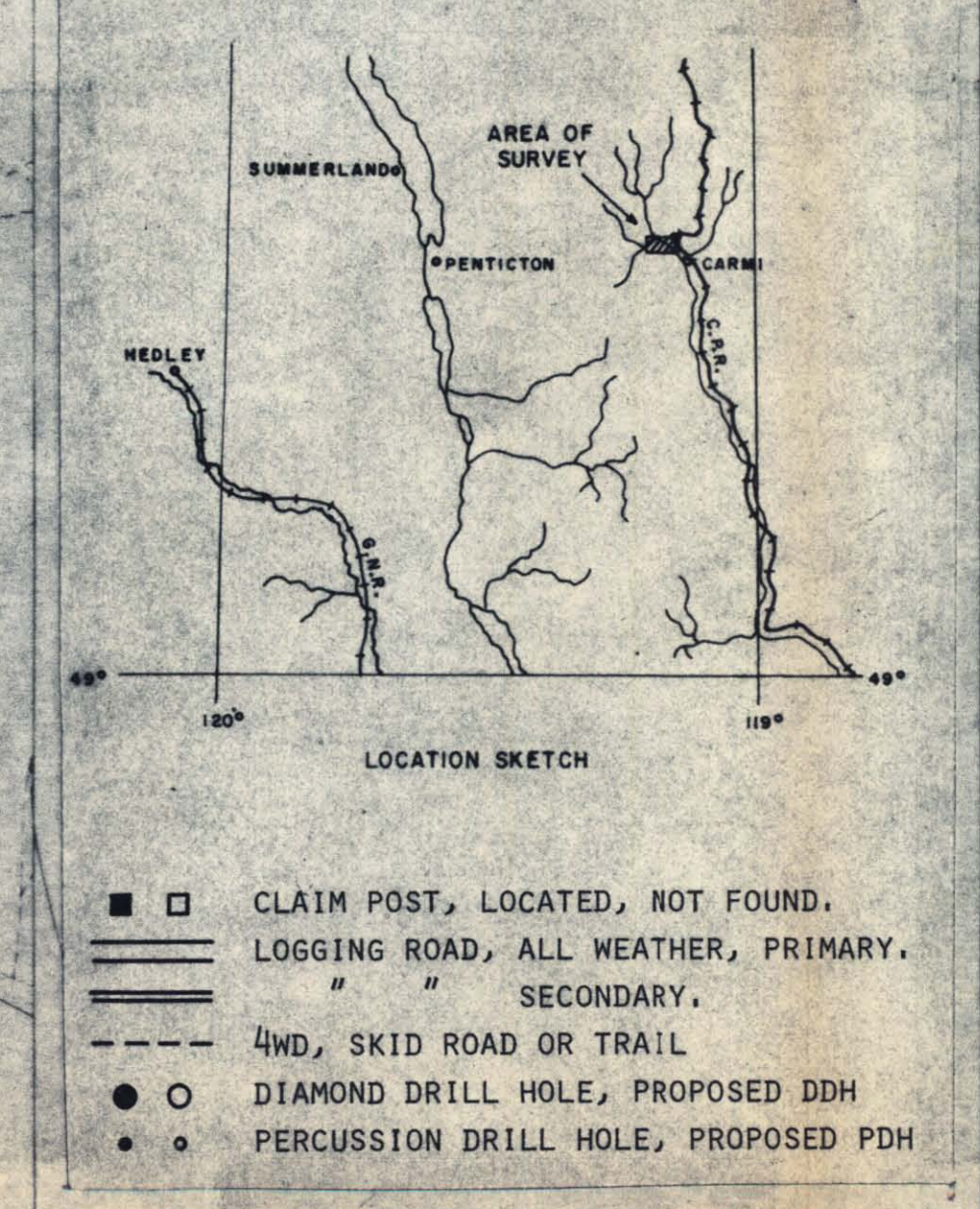


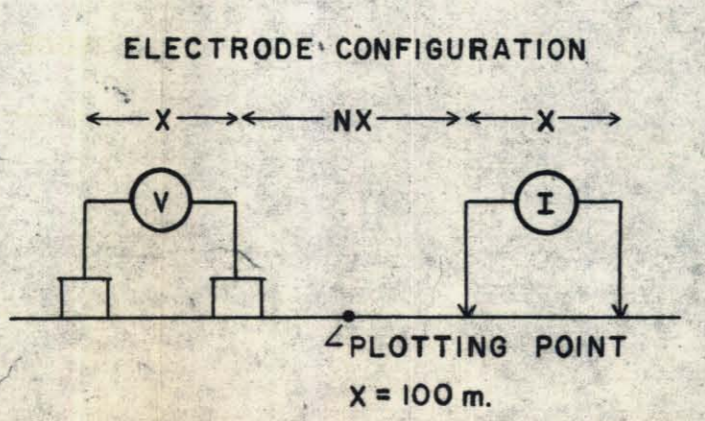
PHOENIX GEOPHYSICS LIMITED  
 INDUCED POLARIZATION AND RESISTIVITY SURVEY  
 PLAN MAP



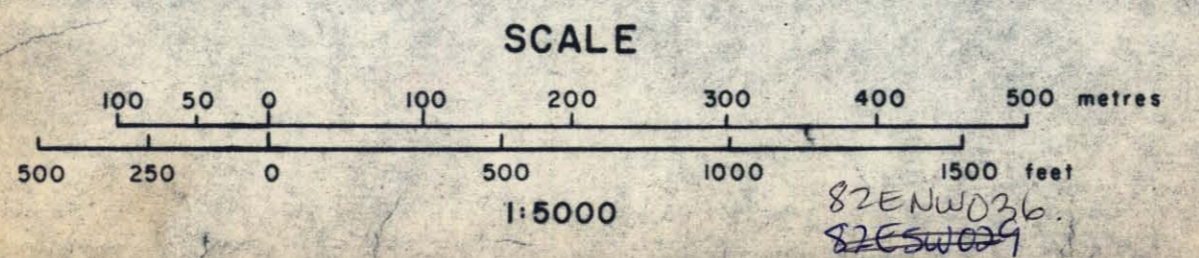
NOTE TO ACCOMPANY GEOPHYSICAL REPORT FOR CRAIGMONT MINES LTD. ON THE 82 E/11-CA GROUP IN THE CARMÍ AREA, GREENWOOD M.D., B.C., BY PHILIP G. HALLOP, P. ENG., GEOPHYSICIST, AND A.W. MULLAN, P. ENG., GEOLOGIST. DATED AUGUST 30, 1976.



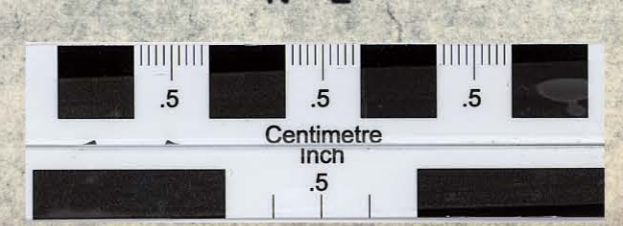
SURFACE PROJECTION OF ANOMALOUS ZONE  
 DEFINITE  
 PROBABLE  
 POSSIBLE  
 NUMBER AT END OF ANOMALIES INDICATE SPREAD USED.



CRAIGMONT MINES LIMITED  
 82 E/11-CA GROUP, CARMÍ AREA,  
 GREENWOOD, M.D., B.C.



PERCENT FREQUENCY EFFECT  
 (0.31 Hz - 5.0 Hz.)  
 N = 2



NOTE - CONTOURS AT LINEAR INTERVALS 1, 2, 3, 4, 5, ...  
 ANOMALOUS I.P. ZONE

DRAWN: R.N.  
 DATE: AUG. 1976  
 APPROVED: [Signature]  
 DATE: 8/30/76