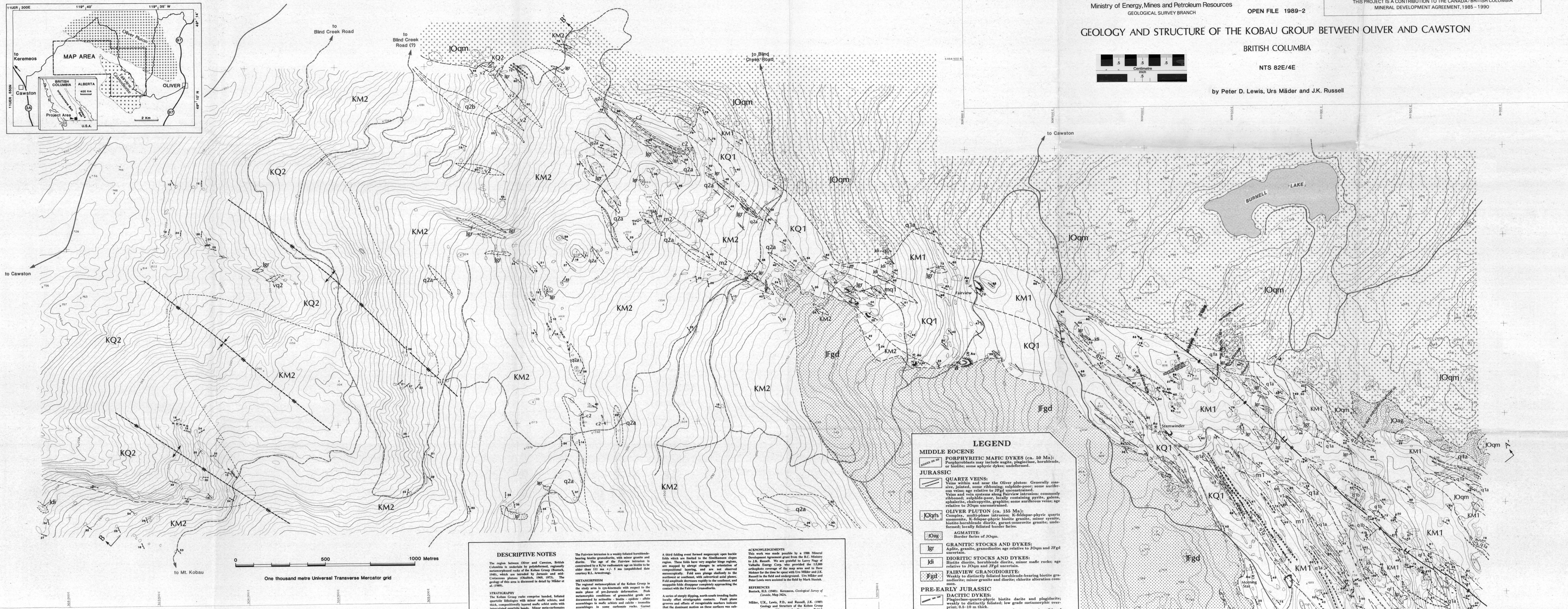
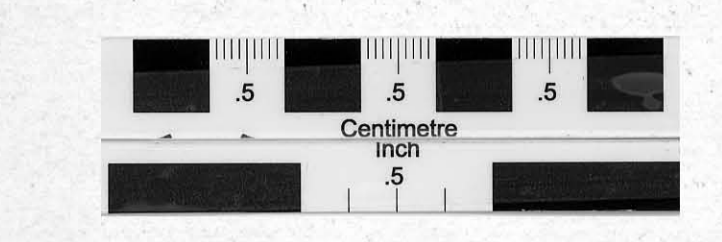
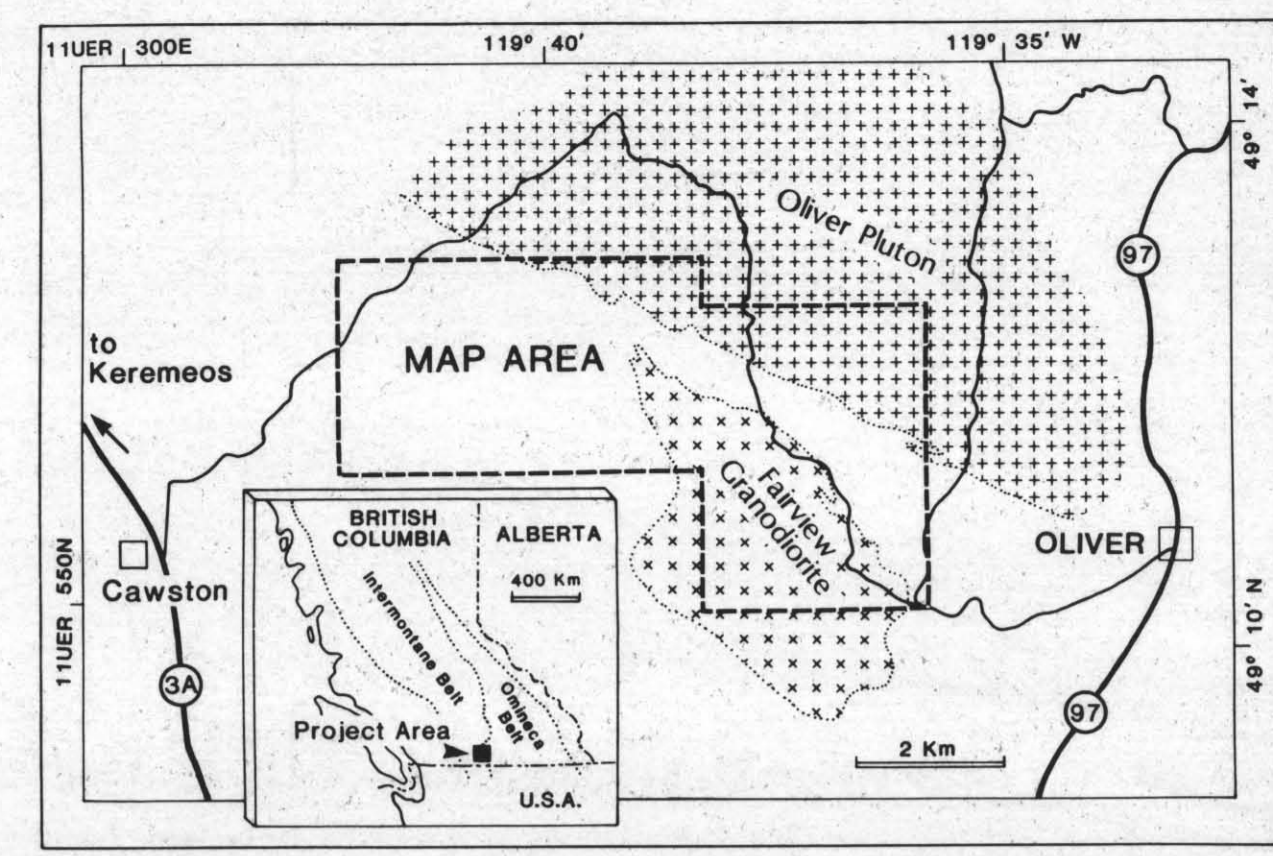


GEOLGY AND STRUCTURE OF THE KOBAY GROUP BETWEEN OLIVER AND CAWSTON

BRITISH COLUMBIA NTS 82E/4E

by Peter D. Lewis, Urs Mäder and J.K. Russell



LEGEND table with columns for geological units and symbols, including descriptions for Middle Eocene Porphyritic Mafic Dykes, Jurassic Quartz Veins, Olivine Pluton, and various schist units.

SYMBOLS table listing symbols for geological contacts, outcrops, axial planes, faults, and other structural features.

DESCRIPTIVE NOTES section containing detailed geological descriptions of the units and structures shown on the map.

