

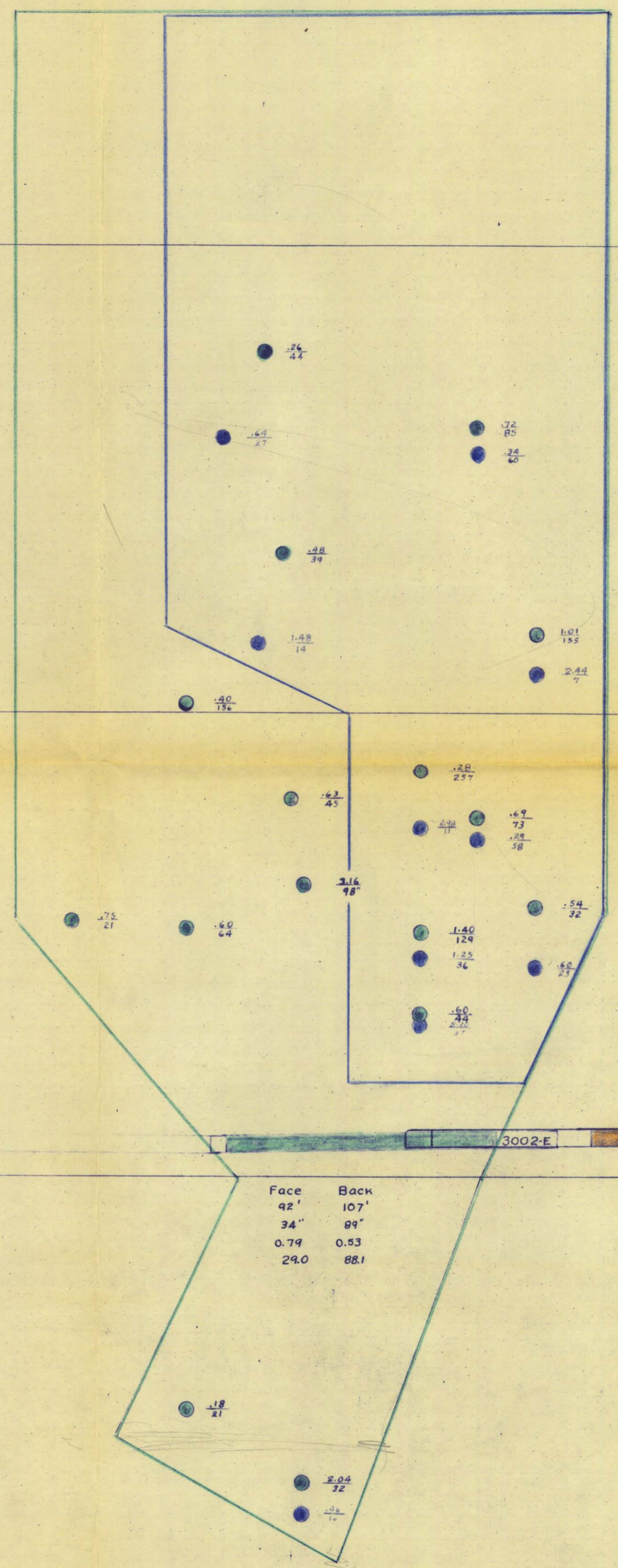
3400

3400

3200

3200

3000

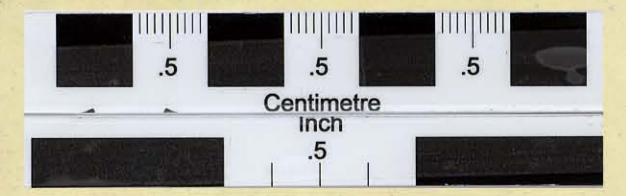


	Face	Back	Face	Back
Length	144'	171'	30'	30'
Width	40"	47"	15"	65"
Grade	0.59	0.59	1.30	0.38
T.P.V. Fr.	53.3	74.4	41	18.0

	Face	Back
	42'	107'
	34"	89"
	0.79	0.53
	24.0	88.1

	Face	Back
	40'	103'
	21"	27"
	1.27	1.45
	17.5	25.7

Vein	Colour	Tonnage	Width	Grade
A	Green	99,600	80"	0.86
B	Blue	19,200	29"	1.33
C	Orange			
Total		118,800		0.93



MORRIS SUMMIT GOLD MINES LTD.  
STEWART, B.C.

**LONGITUDINAL SECTION**

Scale 1" = 40'

Oct. 1948

ASSAYS - oz. per ton  
Inches