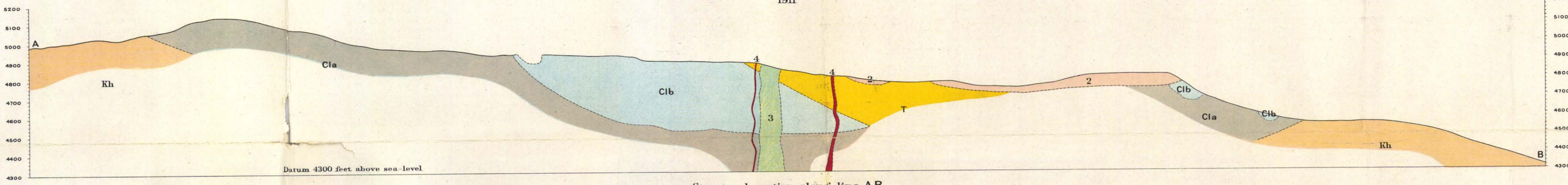


Canada
Department of Mines
GEOLOGICAL SURVEY

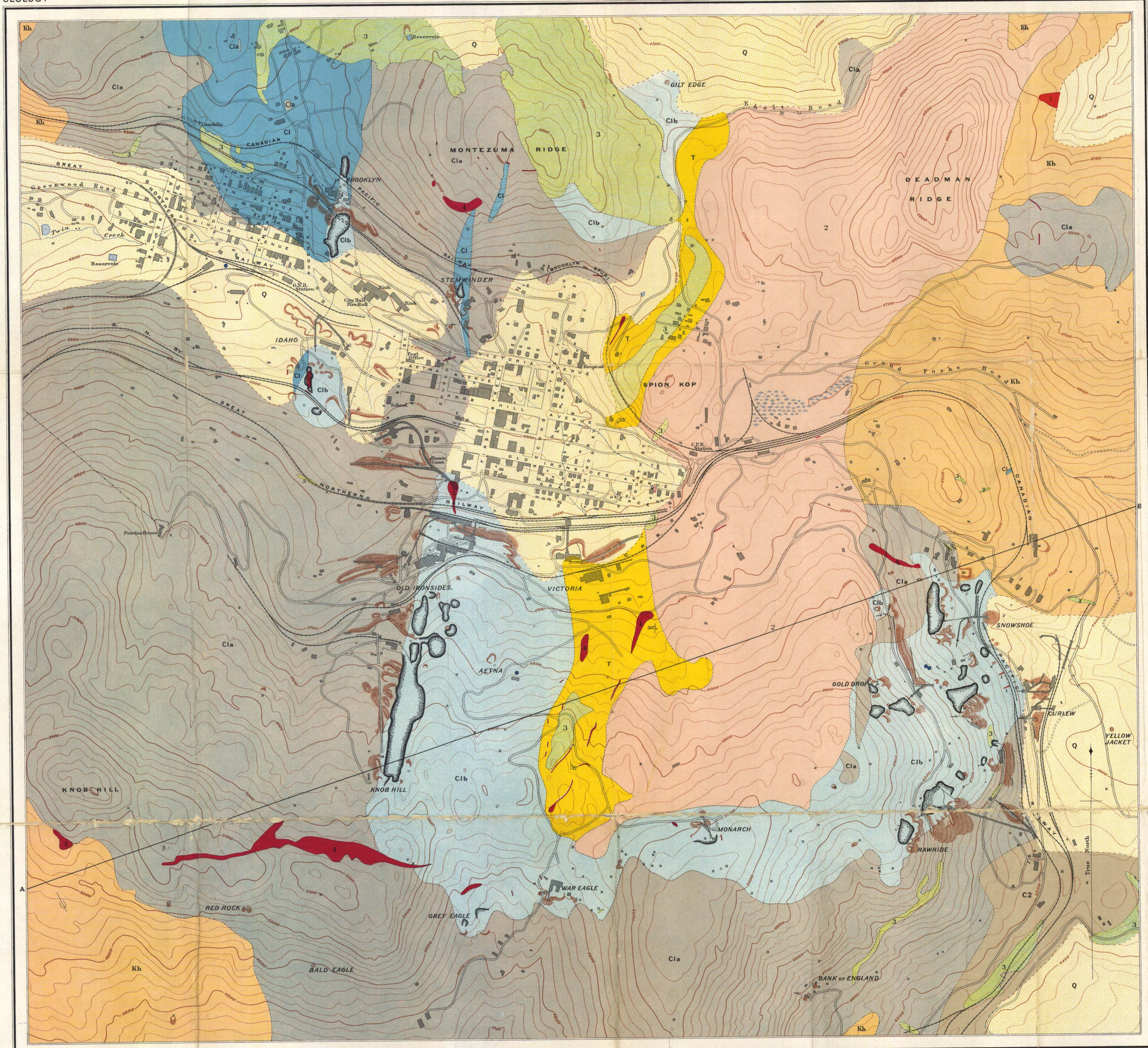
HON. W. TEMPLEMAN, MINISTER; A. P. LOW, DEPUTY MINISTER;
R. W. BROCK, DIRECTOR.

1911



GEOLOGY

BRITISH COLUMBIA



LEGEND

Culture

- Roads and buildings
- Roads not well defined
- Railways
- Mine tramways
- Elevated tramways
- Aerial tramways
- Bridges
- Elevated buildings
- Shaft houses
- Shafts
- Mine tunnels
- Prospects
- Dams
- Water tanks
- Cribwork
- Glory holes
- Water
- Streams
- Flumes
- Marshes
- Relief
- Contours (showing true form and elevation above sea level) Interval 20 feet
- Depression contours
- Mine dumps

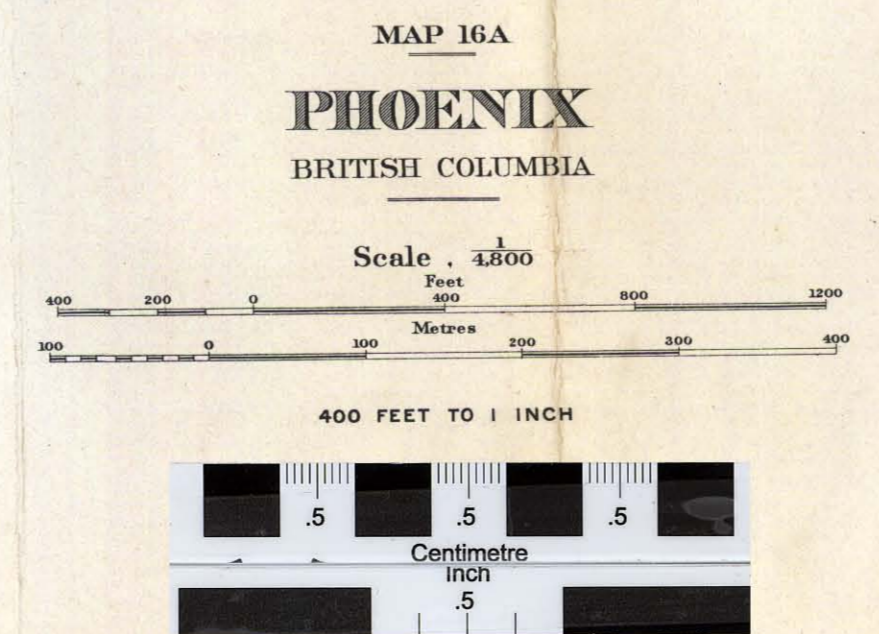
Contours showing heights above sea level based on an elevation supplied by the Grange Mining Co.

Magnetic declination about 24° East.

PROPERTY FILE

- LEGEND**
- QUATERNARY**
 - Q Clay, sand and gravel
 - TERTIARY**
 - 1 Palusite porphyry (alkaline syenite porphyry) (dikes and sills)
 - 3 Andite porphyry (dikes, sills and stocks)
 - 2 Miocene Volcanic group (Traskite flows)
 - T Kettle River formation (conglomerate, sandstone and shales)
 - MESOZOIC**
 - JURASSIC/CRETACEOUS
 - C2 Syenite and syenite porphyry (masses and dikes)
 - CARBONIFEROUS**
 - Attwood Series
 - Cib Rawhide formation (argillites)
 - Cla Brooklyn formation (Mineral zone, containing ore deposits)
 - Cl Brooklyn formation (zone of porphyries)
 - Kh Brooklyn formation (crystalline limestone)
 - Knob Hill group (Ash rock, buff shales and porphyries)
 - PALEOZOIC**
 - Symbols
 - Geological boundary (marked with 20 feet interval contour)
 - Geological boundary (unmarked)
 - Dip and strike
 - Glacial striae

C.O. Senecal, Geographer and Chief Draughtsman.



GEOLOGY 1908
G. E. LEROY.
TOPOGRAPHY 1908
W. H. BOYD, (IN CHARGE)
G. G. AITKEN, COMPILER

82 E/2
013-030
82ESE
Phoenix
082ESE020

To accompany Memoir No. 21