

93K/9W
93K-49

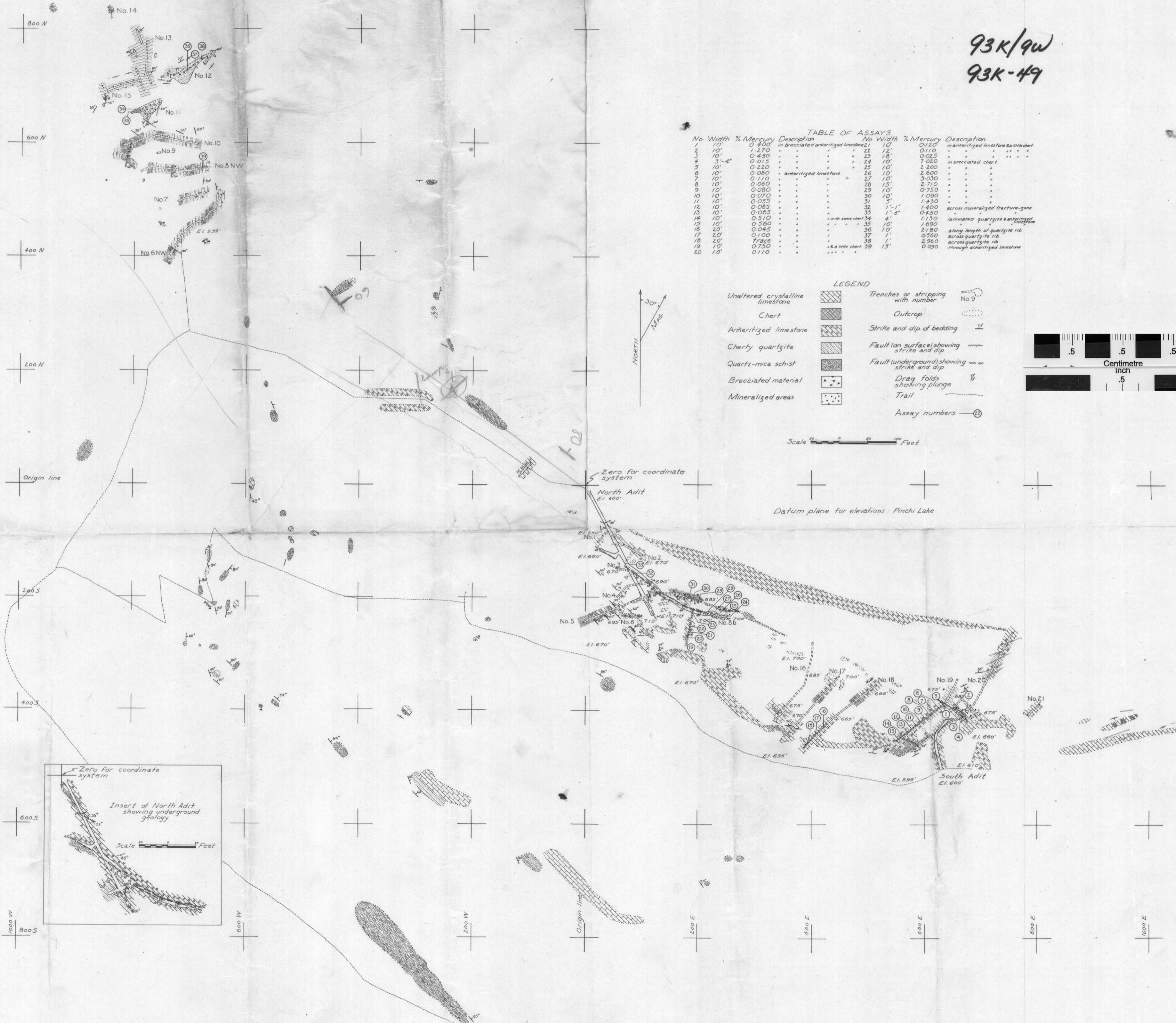
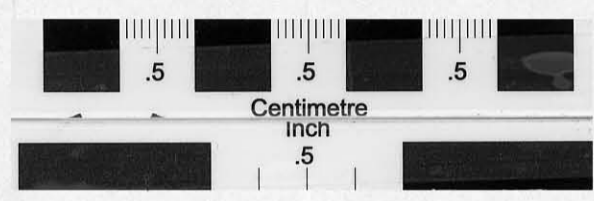


TABLE OF ASSAYS

No.	Width	% Mercury	Description	No.	Width	% Mercury	Description
1	10'	0.400	in brecciated ankeritized limestone	21	10'	0.120	in ankeritized limestone & little chert
2	10'	1.270	"	22	12'	0.110	"
3	10'	0.430	"	23	18'	0.025	"
4	3'-4"	0.015	"	24	10'	7.020	in brecciated chert
5	10'	0.220	"	25	10'	2.200	"
6	10'	0.080	ankeritized limestone	26	10'	2.600	"
7	10'	0.110	"	27	10'	3.030	"
8	10'	0.060	"	28	15'	2.710	"
9	10'	0.080	"	29	10'	0.750	"
10	10'	0.070	"	30	10'	1.090	"
11	10'	0.055	"	31	5'	1.430	"
12	10'	0.085	"	32	7'-1"	1.400	across mineralized fracture-zone
13	10'	0.065	"	33	1'-6"	0.450	"
14	10'	0.510	" with some chert	34	4'-6"	1.130	laminated quartzite & ankeritized limestone
15	10'	0.560	"	35	10'	1.690	"
16	20'	0.045	"	36	10'	2.180	along length of quartzite rib
17	20'	0.100	"	37	1'	0.960	across quartzite rib
18	20'	trace	"	38	1'	2.960	across quartzite rib
19	10'	0.750	" & a little chert	39	15'	0.090	through ankeritized limestone
20	10'	0.110	"				

- LEGEND
- Unaltered crystalline limestone
 - Chert
 - Ankeritized limestone
 - Cherty quartzite
 - Quartz-mica schist
 - Brecciated material
 - Mineralized areas
 - Trenches or stripping with number
 - Outcrop
 - Strike and dip of bedding
 - Fault (on surface) showing strike and dip
 - Fault (underground) showing strike and dip
 - Drag folds showing plunge
 - Trail
 - Assay numbers



Scale 0 100 Feet

Datum plane for elevations: Pinchi Lake

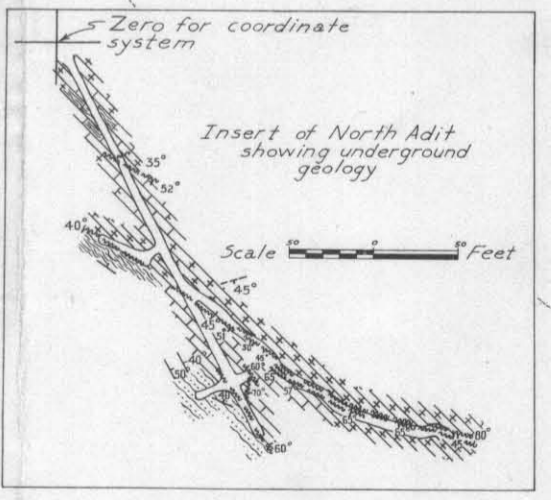


Fig. 1. Workings on the Pinchi Lake cinnabar property of the Consolidated Mining and Smelting Company of Canada, Ltd.