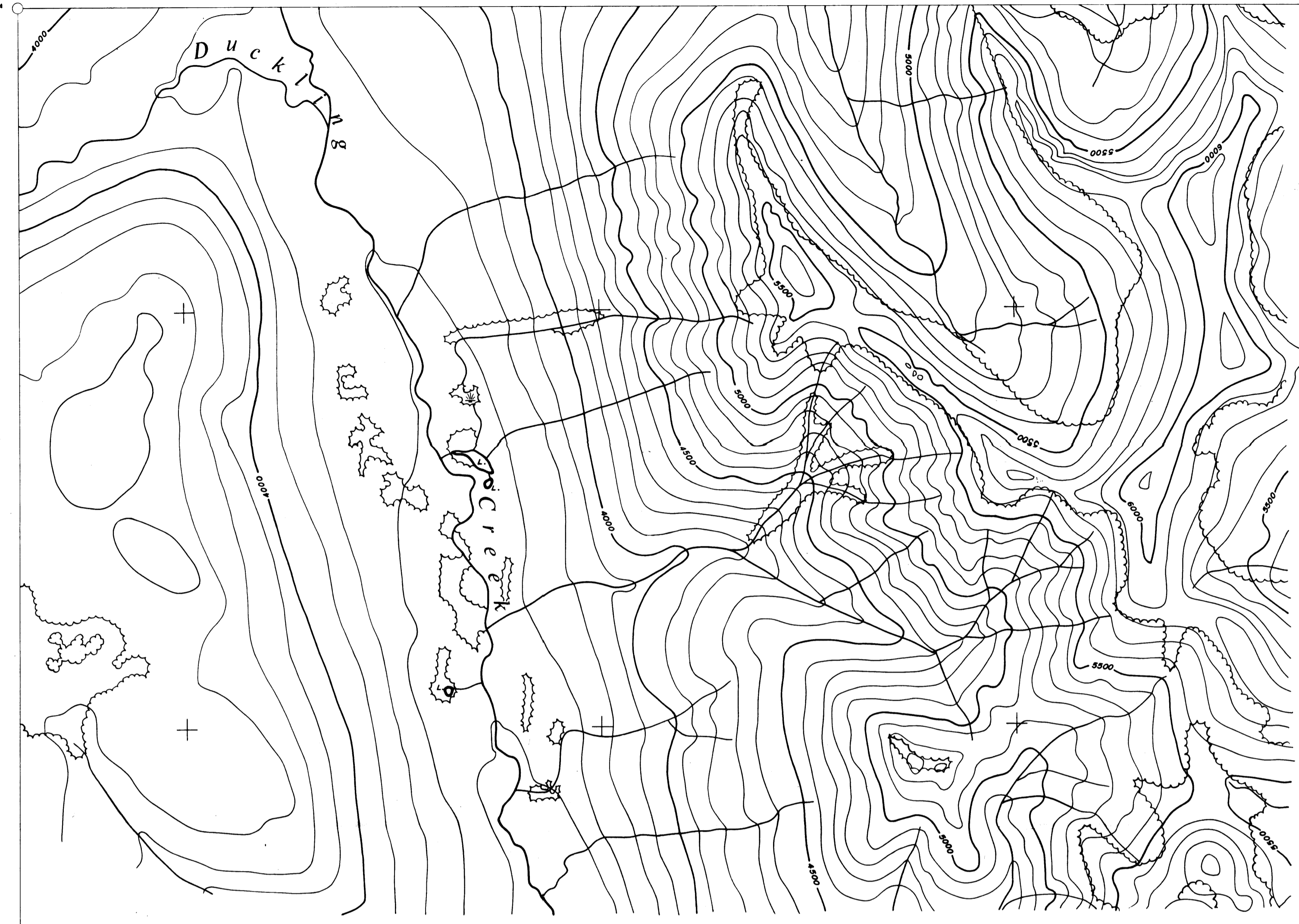


125°22'30"  
55°54'00"

125°15'00"  
55°54'00"



80 000  
40 000

80 000  
40 000

80 000  
50 000

80 000  
50 000

55°51'00"  
125°22'30"

55°51'00"  
125°15'00"

000246

Produced by the Map Production Division.  
Copies available from Map-Air Photo Sales,  
Surveys and Mapping Branch,  
Dept. of Lands, Forests, & Water Resources,  
Victoria, B.C.

Field Control: Existing  
Datum of Elevations: Geodetic  
Air Photography: B.C. Gov't 1970  
Grid Origin Referred to 56°-125°

NOTES

Compiled on: A-7  
Compilation Completed: Oct. 1972  
Draughting Completed: Oct. 1972  
Revised:

Triangulation Station with elevation  
Bench Mark with elevation  
Horizontal Control Point with elevation  
Vertical Control Point with elevation  
Air Photo Centre & Flight Number

LEGEND

- ▲ Building - Permanent, Temporary
- ∩ Contours - Elevation, Depression
- ▣ Cultivated Area, Orchard
- Wooded Area, Scrub
- Swamp
- ▬ Roads - Paved, Gravel
- Jeep Trail
- ▬ Railway
- Power Line - on Pole, on Tower
- Fence

KEY MAP  
See Separate Sheet

**LORRAINE PORPHYRY**  
SCALE: 1 Inch = 1000 Feet  
Contour Interval: 100 Feet  
Neg. 161038 Sheet 93 N/14 II 72-8 (T)

