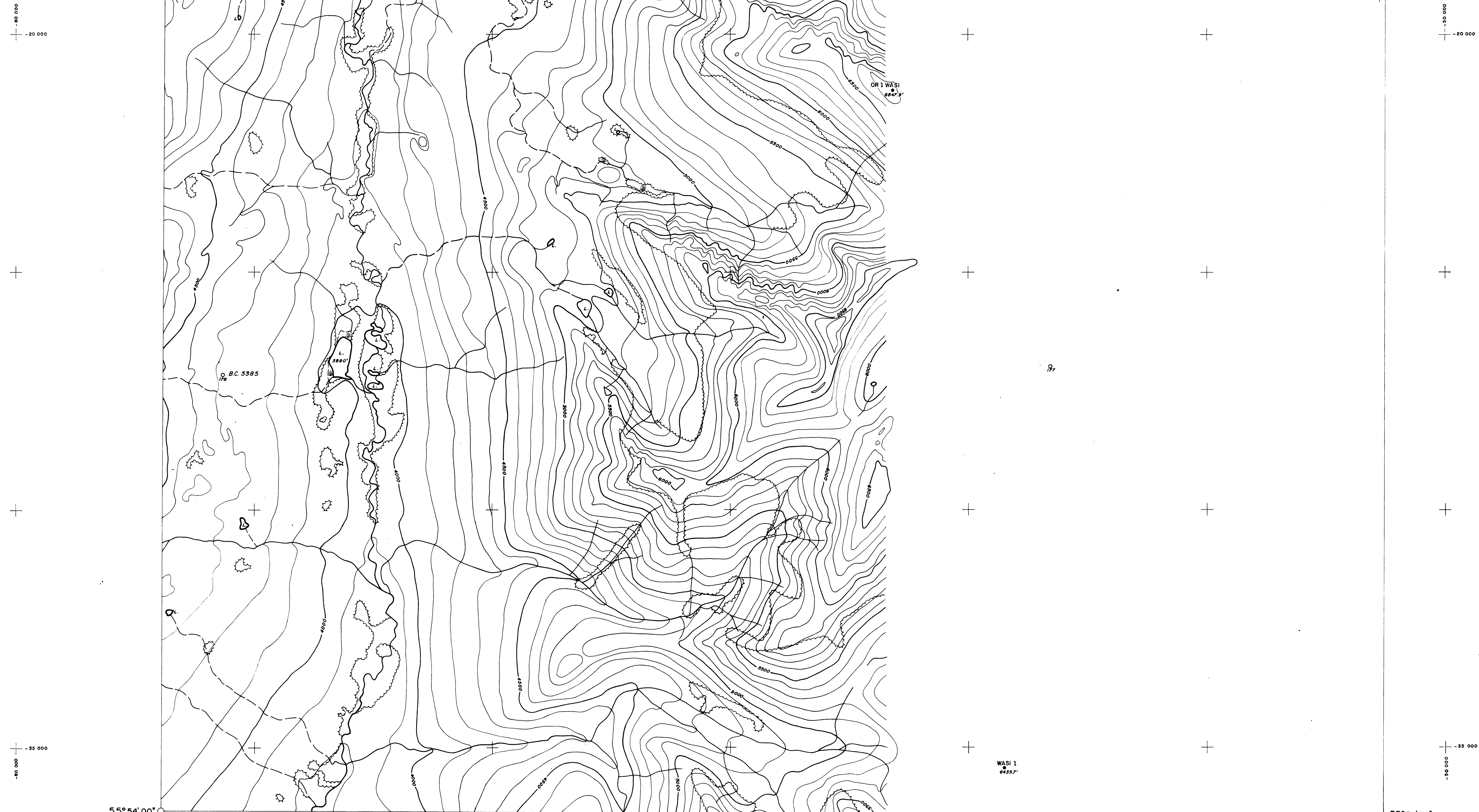


125°22'30"  
55°57'00"

125°15'00"  
55°57'00"



55°54'00"  
125°22'30"

55°54'00"  
125°15'00"

000243

Produced by the Map Production Division.  
Copies available from: Map-Air Photo Sales,  
Surveys and Mapping Branch,  
Dept. of Lands, Forests, & Water Resources,  
Victoria, B.C.

NOTES

Field Control: Existing  
Datum of Elevations: Geodetic  
Air Photography: B.C. Gov't 1970  
Grid Origin Referred to: 56°-125°

Compiled on: A-7  
Compilation Completed: Oct. 1972  
Drafting Completed: Oct. 1972  
Revised:

Triangulation Station with elevation  
Bench Mark with elevation  
Horizontal Control Point with elevation  
Vertical Control Point with elevation  
Air Photo Centre & Flight Number

LEGEND

- △ Building - Permanent, Temporary
- ▽ Contours - Elevation, Depression
- Cultivated Area, Orchard
- Wooded Area, Scrub
- Swamp
- ▣ Roads - Paved, Gravel
- Jeep, Trail
- Railway
- Power Line - on Pole, on Tower
- Fence

KEY MAP

See Separate Sheet

LORRAINE PORPHYRY

SCALE: 1 Inch = 1000 Feet

Contour Interval: 100 Feet

Sheet 93 1/4 14 72-8 (T)

Neg. 161041

