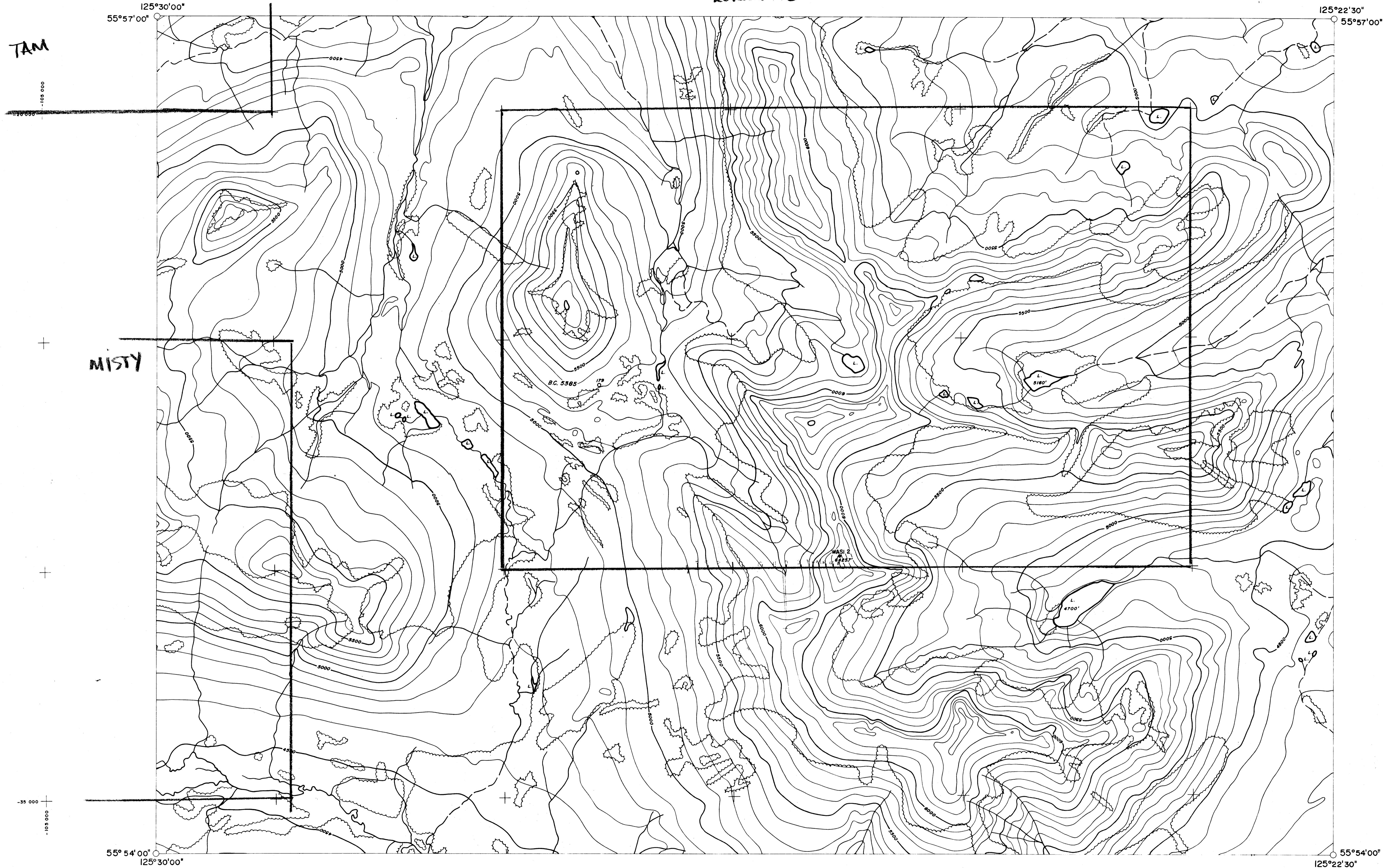


LORRAINE



TAM

MISTY

125.5

NOTES

Produced by the Map Production Division.
Copies available from Map-Air Photo Sales,
Surveys and Mapping Branch,
Dept. of Lands, Forests & Water Resources,
Victoria, B.C.

Field Control: Existing
Datum of Elevations: Geodetic
Air Photography: B.C. Gov't 1970
Grid Origin Referred to: 56°-125°

Compiled on: A-7
Compilation Completed: Oct. 1972
Drafting Completed: Oct. 1972
Revised:

Triangulation Station with elevation
Bench Mark with elevation
Horizontal Control Point with elevation
Vertical Control Point with elevation
Air Photo Centre & Flight Number

LEGEND

△ Building - Permanent, Temporary
Contours - Elevation, Depression
□ Cultivated Area, Orchard
• Wooded Area, Scrub
○ Swamp

▬▬▬▬ Roads - Paved, Gravel
- - - - - Jeep, Trail
⊢⊢⊢⊢ Railway
⊢⊢⊢⊢ Power Line - on Pole, on Tower
⊢⊢⊢⊢ Fence

KEY MAP

See Separate Sheet

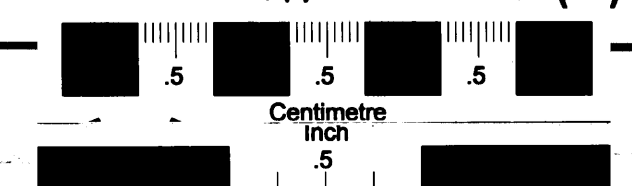
LORRAINE PORPHYRY

SCALE: 1 Inch = 1000 Feet

Contour Interval: 100 Feet

Neg. 161040

Sheet 93M/413 72-8(T)



000242