

N<sup>o</sup> 3 TUNNEL  
Elev. 0

N<sup>o</sup> 2 TUNNEL  
Elev. 130' (5383)

N<sup>o</sup> 1 TUNNEL  
Elev. 237'

P.D.H. No. 2 119'  
0°

D.D.H. No. 1 272'  
0°

D.D.H. No. 3 144'  
-32°

D.D.H. No. 6 106'  
-45°

D.D.H. No. 4 138'  
-20°

D.D.H. No. 5 124'  
-15°

D.D.H. No. 8 144'  
+38°

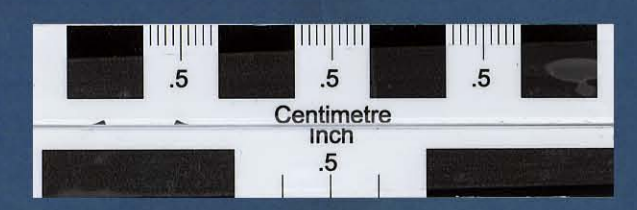
INTERMEDIATE  
Elev. 177'

STOP

# HOWARD MINE

YMIR, B.C.

SCALE: 1" = 30'



000226