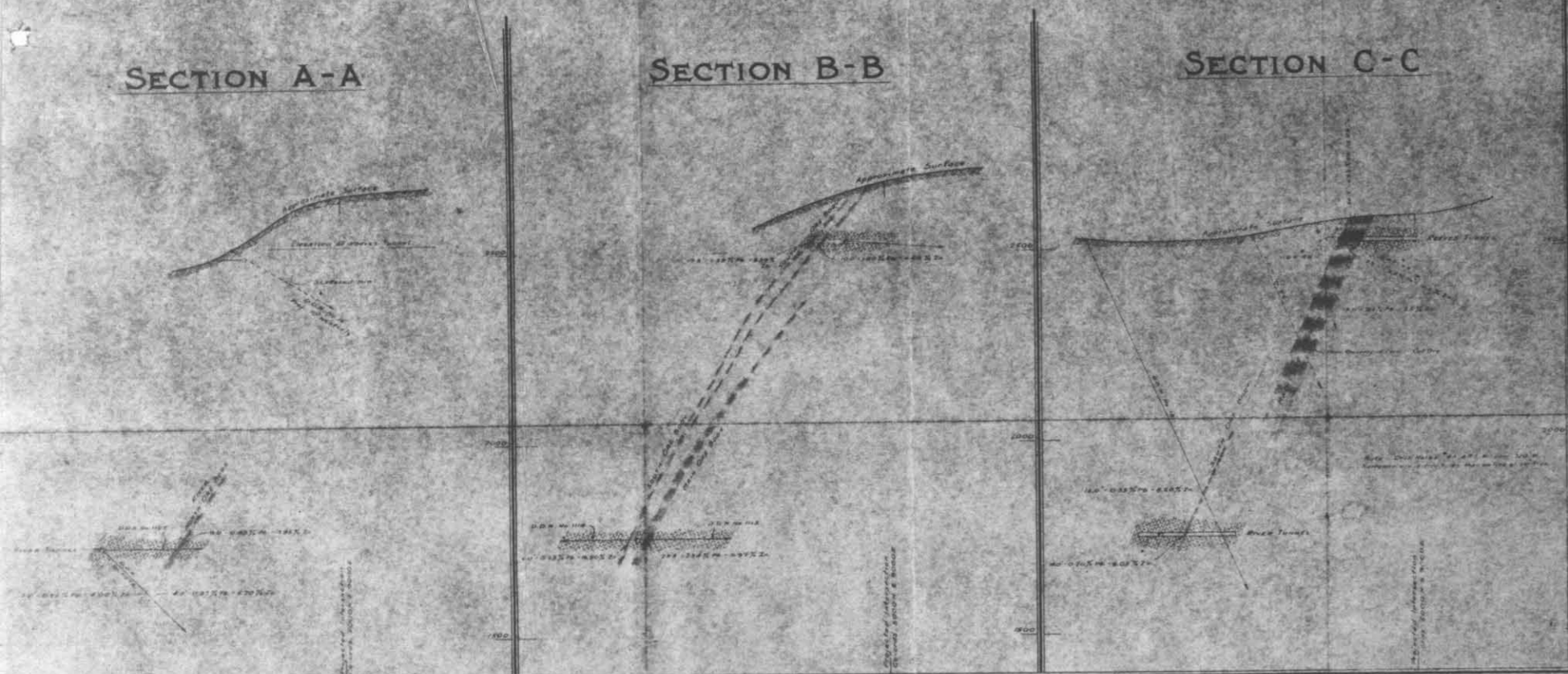


CROSS SECTIONS 82F/3W
 Looking S 80° W
 Scale 1 in. = 200 Ft
82F/sw-26

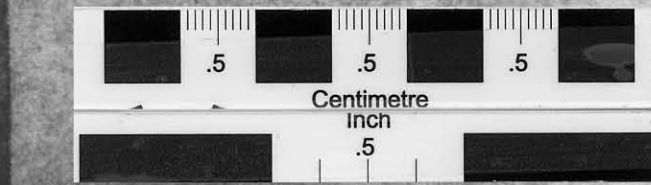
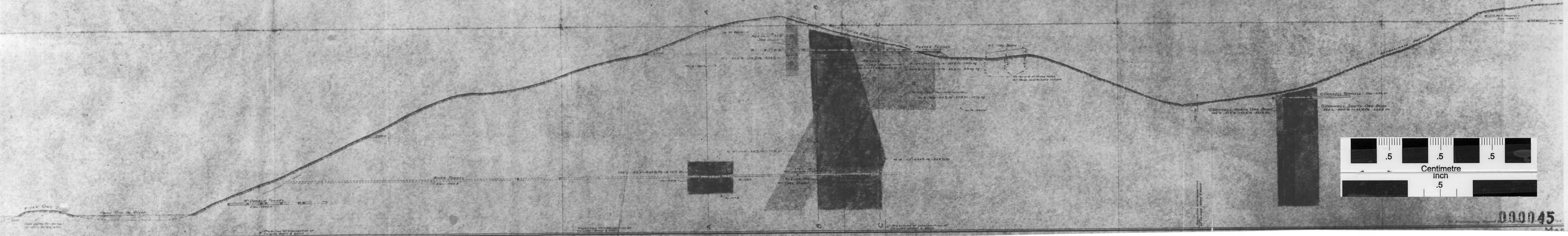
SECTION A-A

SECTION B-B

SECTION C-C



LONGITUDINAL SECTION
 PLANE N 80° E
 SHOWING ORE BODIES
 OF THE
REEVES-McDONALD GROUP
 PEND OREILLE MINES & METALS CO.
 Near Salmo, British Columbia
 Scale 1 in. = 200 Ft



ORE RESERVES

DEVELOPED & PROBABLE ORE

REEVES

DESCRIPTION	Block No.	TONS	% Pb	% Zn
Main Ore Body	1	64,171	1.37	6.08
"	2	1,131,438	1.47	6.75
"	3	268,771	1.67	7.65
"	4	129,010	1.86	8.28
TOTAL		1,593,390	1.67	6.78
South Ore Body	5	82,028	1.62	6.65
"	6	350,638	1.76	7.95
"	7	62,648	2.38	8.93
TOTAL		477,589	1.88	7.90
No. 124 Ore Body	10	43,485	1.06	4.32
"	11	89,802	1.00	4.22
TOTAL		133,287	1.00	4.22
TOTAL REEVES		2,183,998	1.59	6.60

POSSIBLE ORE

REEVES

DESCRIPTION	Block No.	TONS	% Pb	% Zn
North Ore Body	8	27,076	0.66	4.76
South Ore Body	9	27,076	0.66	4.76
TOTAL		54,152	0.66	4.76

O'DONNELL

DESCRIPTION	Block No.	TONS	% Pb	% Zn
North Ore Body	12	3,780	1.52	6.89
"	13	65,000	1.52	6.87
TOTAL		68,780	1.52	6.87
South Ore Body	14	40,500	1.35	5.28
"	15	180,000	1.35	5.28
TOTAL		220,500	1.35	5.28
TOTAL O'DONNELL		289,280	1.39	5.90
GROSS TOTAL DEVELOPED, PROBABLE AND POSSIBLE ORE		2,473,278	1.59	6.59

TOTAL

DESCRIPTION	Block No.	TONS	% Pb	% Zn
North Ore Body	16	182,730	1.52	6.87
South Ore Body	17	213,000	1.35	5.28
TOTAL		395,730	1.40	5.08
GROSS TOTAL DEVELOPED, PROBABLE AND POSSIBLE ORE		2,869,008	1.59	6.59